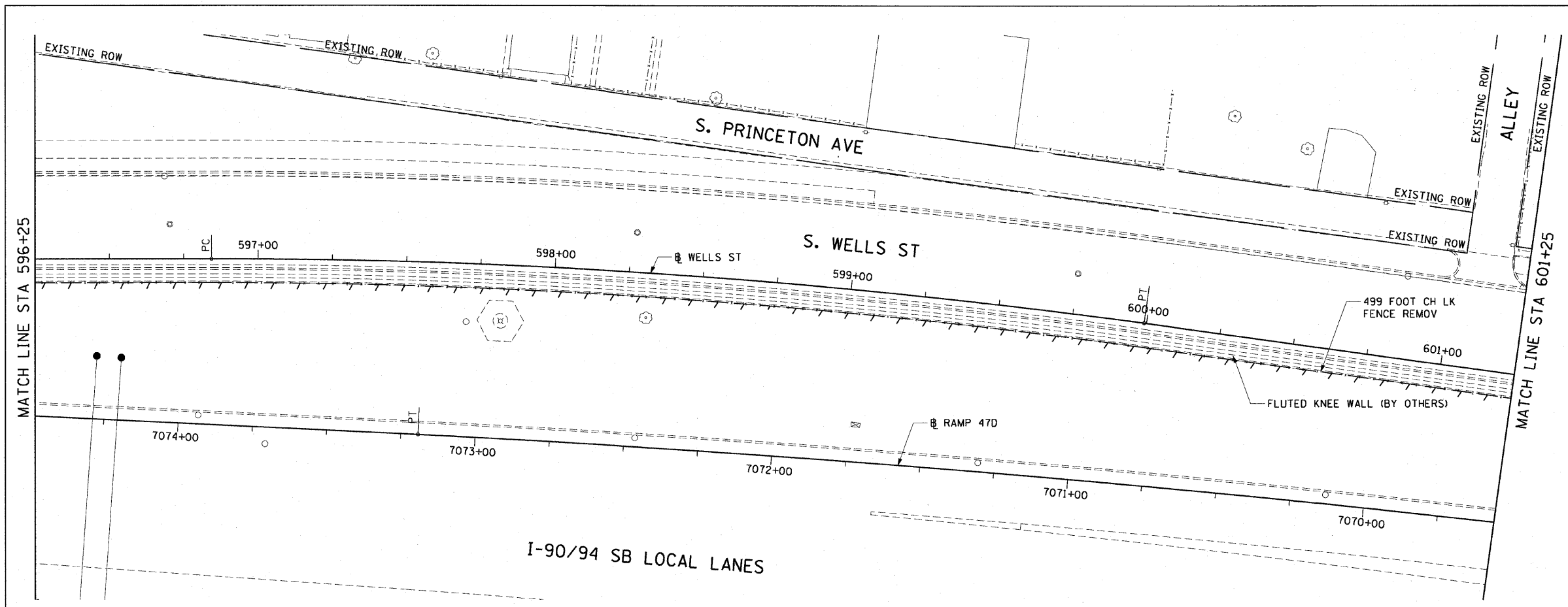


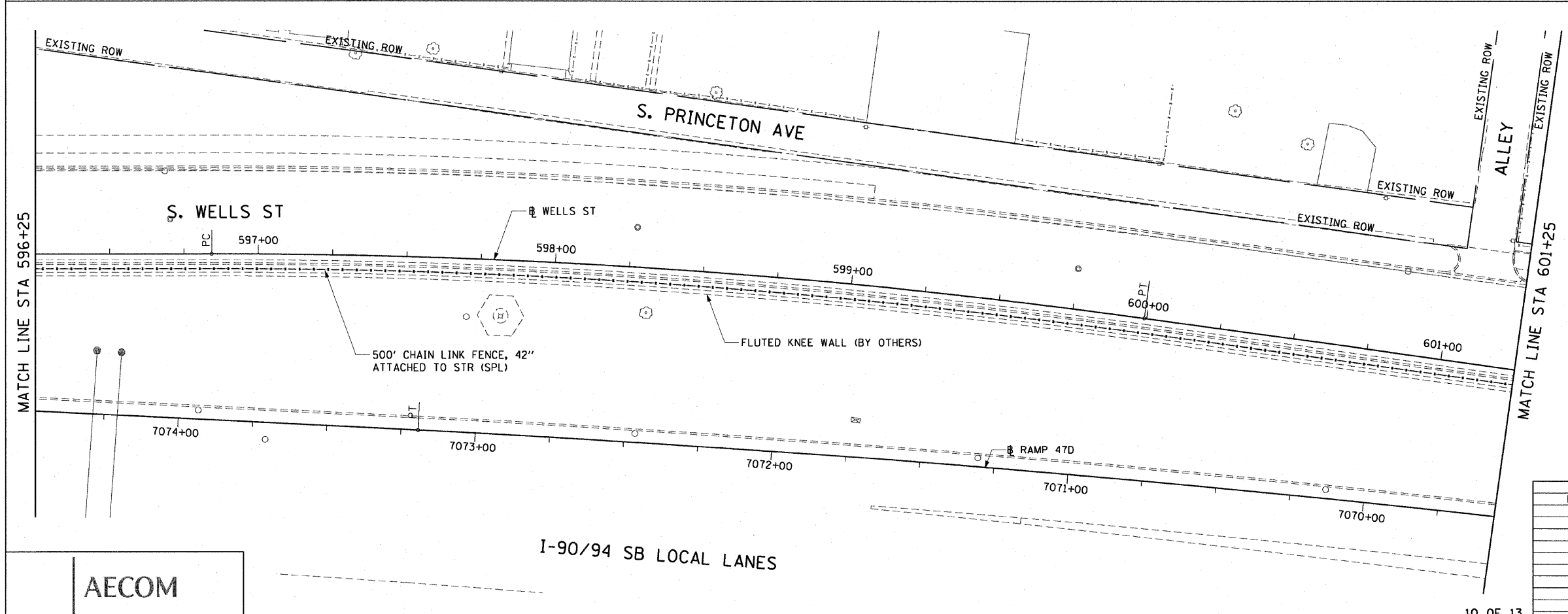
F.A.I. RTE.	SECTION	COUNTY	TOTAL SHEETS	SHEET NO.
90/94	2005-032 I	COOK	37	22
STA. 596+25		TO STA. 601+25		
FED. ROAD DIST. NO. 1		ILLINOIS FED. AID PROJECT		
60A03				



LEGEND:

 LINEAR REMOVALS

EXISTING CONDITIONS AND REMOVAL
 PROPOSED IMPROVEMENTS



- NOTES:
1. SEE STRUCTURAL DETAILS FOR CHAIN LINK FENCE DETAILS.
 2. ALL STATION CALLOUTS ARE TAKEN AT THE CENTERLINE OF THE CHAIN LINK FENCE.
 3. FLUTED KNEE WALL CONSTRUCTED IN CONTRACT 62987.

REVISIONS	
NAME	DATE

ILLINOIS DEPARTMENT OF TRANSPORTATION
 F.A.I. 90/94 (DAN RYAN EXPRESSWAY)
 71ST ST TO 47TH ST (NB & SB FENCE AND GATES)
 EXISTING AND PROPOSED ROADWAY PLANS
 WELLS STREET
 SCALE: 1"=20'
 DATE: JANUARY 14, 2009
 DRAWN BY: NJH
 CHECKED BY: RMG

AECOM

V:\schaff\p207\p40468\p40468.dwg 12/28/09 12:34:18 PM 1/13/2009