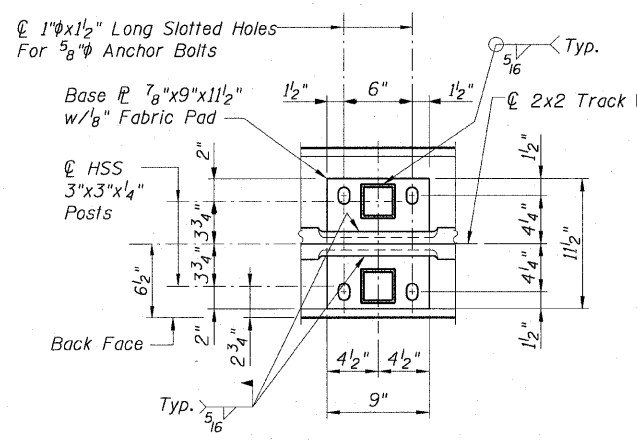
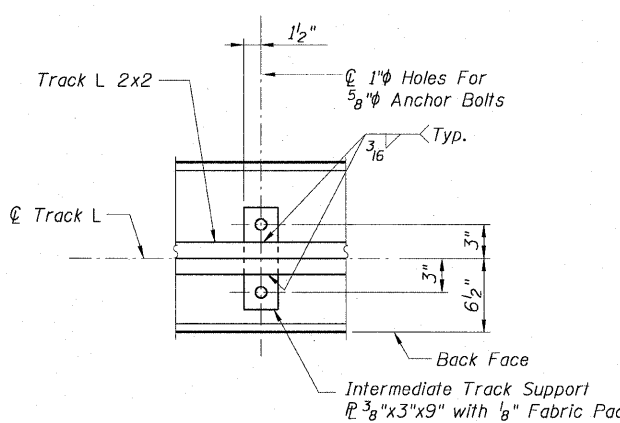


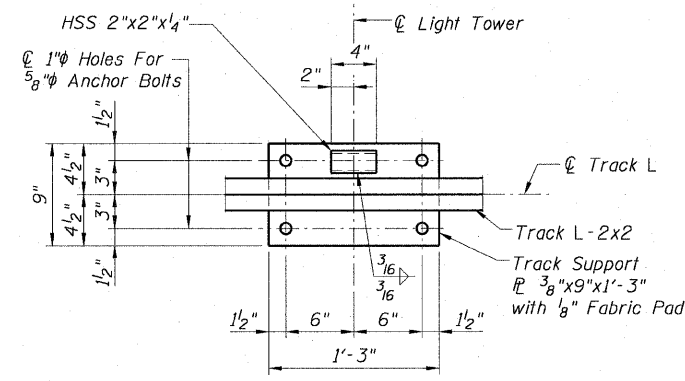
PLAN - GATE IN OPEN POSITION



DETAIL 1



DETAIL 2



DETAIL 3

- NOTES:**
- All Bolts Shall Be Stainless Steel Conforming to ASTM F593-98 and F594-98.
 - All Pipes and Bars Shall Be Hot Dipped Galvanized After Fabrication.
 - All Exposed Chain Link Fence, 42" Attached To Structure (Special) and Gate Materials Shall Be Finished With Either Black Vinyl or Powder Coating.
 - F.F. = Front Face
 - B.F. = Back Face
 - For Anchor Bolt Details See Sheet F6.

AECOM

REVISIONS		NAME	DATE
NO.	DESCRIPTION		

SHEET F5 of 7

ILLINOIS DEPARTMENT OF TRANSPORTATION
F.A.I. 90/94 (DAN RYAN EXPRESSWAY)
71ST ST TO 47TH ST (NB & SB FENCE AND GATES)

**TYPICAL PLAN AND DETAILS
CHAIN LINK FENCE, 42" GATE (SPECIAL)
COOK COUNTY**

SCALE: None DRAWN BY: FJD
DATE: JANUARY 14, 2009 CHECKED BY: RS

V:\scg\p207\p40468\p40468\struct\28-knee-wall_fence\sm\contract_35\1350032.dwg 1/13/2009 12:34:21 PM