

**STATE OF ILLINOIS  
DEPARTMENT OF TRANSPORTATION  
DIVISION OF HIGHWAYS**

**PLANS FOR PROPOSED  
FEDERAL AID HIGHWAY**

**F.A.I. ROUTE 94 (DAN RYAN EXPRESSWAY)  
SECTION 2006-034 I  
INSTALLATION OF FENCING AND GATING  
VARIOUS LOCATIONS  
71ST STREET TO 63RD STREET  
COOK COUNTY  
C-91-016-07**



**INDEX OF SHEETS**

SHEET	DESCRIPTION
1	COVER SHEET, INDEX OF SHEETS, LIST OF ILLINOIS DOT HIGHWAY STANDARDS
2	GENERAL NOTES AND PROJECT COMMITMENTS
3	SUMMARY OF QUANTITIES
4-14	ALIGNMENT PLANS, SURVEY TIES AND CONTROL POINTS
15-24	EXISTING AND PROPOSED ROADWAY PLANS
25-31	STRUCTURAL DETAILS
32	ELECTRICAL DETAILS
33	TC-10 DISTRICT 1, TRAFFIC CONTROL & PROTECTION FOR SIDE ROADS, INTERSECTIONS AND DRIVEWAYS
34	TC-17 DISTRICT 1, TRAFFIC CONTROL FOR SHOULDER CLOSURES AND PARTIAL RAMP CLOSURES
35	TC-18 DISTRICT 1, SIGNING FOR FLAGGING OPERATIONS AT WORK ZONE OPENINGS
36	TC-22 DISTRICT 1, ARTERIAL ROAD INFORMATION SIGN

**DESIGN NUMBER**

D-91-419-01

**IDOT HIGHWAY STANDARDS**

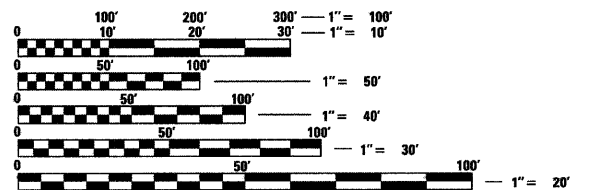
STANDARD	DESCRIPTION
000001-05	STANDARD SYMBOLS, ABBREVIATIONS, AND PATTERNS
001001-02	AREAS OF REINFORCEMENT BARS
001006-	DECIMAL OF AN INCH AND OF A FOOT
664001-02	CHAIN LINK FENCE
701601-03	URBAN LANE CLOSURE, MULTILANE, 1W OR 2W WITH NONTRAVERSABLE MEDIAN
701701-04	URBAN LANE CLOSURE, MULTILANE INTERSECTION
701801-04	LANE CLOSURE MULTILANE 1W OR 2W CROSSWALK OR SIDEWALK CLOSURE
701901-01	TRAFFIC CONTROL DEVICES

**PROJECT LOCATED IN CITY OF CHICAGO**

**DESIGN DESIGNATION**

STATE ST: 1170 (20) URBAN COLLECTOR  
LAFAYETTE AVE: 632 (20) URBAN COLLECTOR

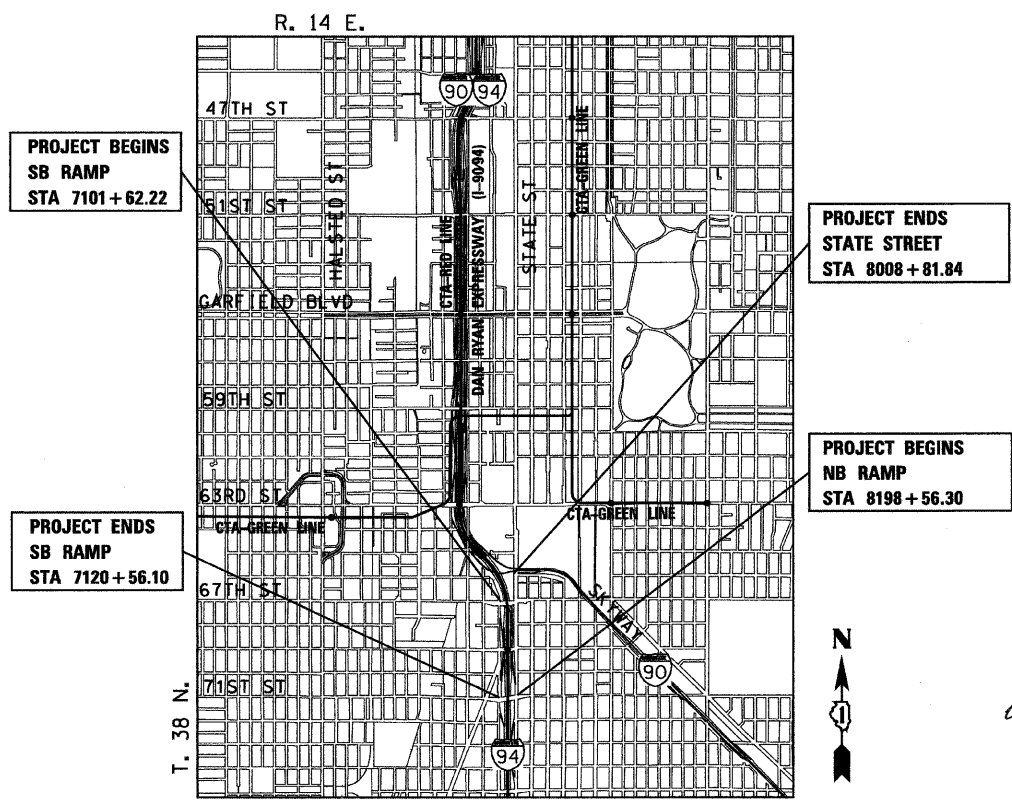
	DESIGN SPEED	POSTED SPEED
STATE STREET	30	25
LAFAYETTE AVENUE	30	25



FULL SIZE PLANS HAVE BEEN PREPARED USING STANDARD ENGINEERING SCALES. REDUCED SIZED PLANS WILL NOT CONFORM TO STANDARD SCALES. IN MAKING MEASUREMENTS ON REDUCED PLANS, THE ABOVE SCALES MAY BE USED.

DIGGER:  
CHICAGO UTILITY ALERT NETWORK  
(312) 744-7000

**CONTRACT NO. 60B88**



**LOCATION MAP**

GROSS LENGTH OF PROJECT = 21,349 FT (4.043 MILES)  
NET LENGTH OF PROJECT = 21,349 FT (4.043 MILES)



ROBERT M. GOVEIA  
11/30/2009 EXPIRES 01/08/2009 DATE

STATE OF ILLINOIS  
DEPARTMENT OF TRANSPORTATION  
DIVISION OF HIGHWAYS

SUBMITTED JANUARY 8, 2009

Diana M. O'Keefe  
DEPUTY DIRECTOR OF HIGHWAYS, REGION ENGINEER

June 26, 2009  
Charles G. Ingersoll  
ENGINEER OF DESIGN AND ENVIRONMENT

June 26, 2009  
Christine M. Reed  
DIRECTOR OF HIGHWAYS, CHIEF ENGINEER

**PRINTED BY THE AUTHORITY  
OF THE STATE OF ILLINOIS**



DISTRICT ONE DESIGNCONSULTANT SERVICES PROJECT MANAGER  
RAJENDRA SHAH (847) 705-4555