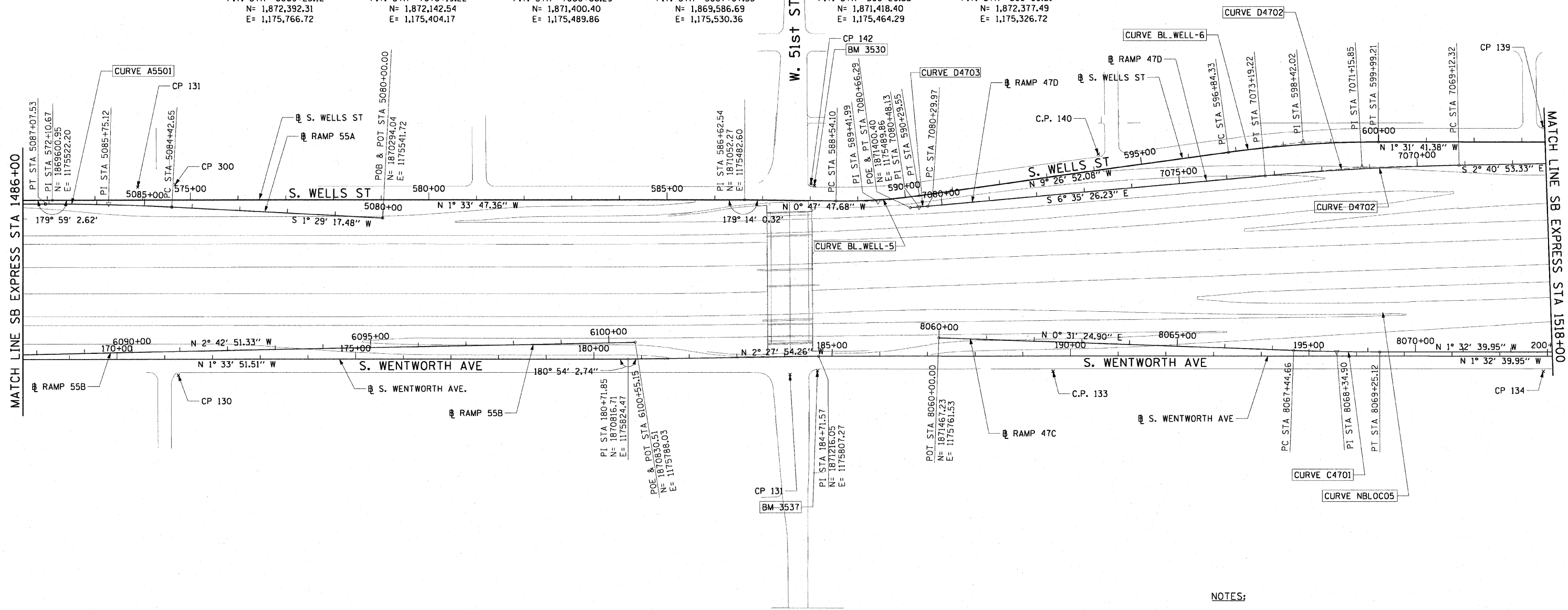


F.A.I. RTE.	SECTION	COUNTY	TOTAL SHEETS	SHEET NO.
90/94	2006-034 I	COOK	36	9
STA.		TO STA.		
FED. ROAD DIST. NO. 1		ILLINOIS FED. AID PROJECT		

60B88



CURVE C4701 P.I. STA= 8068+34.90 N= 1,872,302.10 E= 1,175,769.16 $\Delta = 2^{\circ} 04' 05''$ D= 1^{\circ} 08' 45'' R= 5000.00' T= 90.24' L= 180.47' E= 0.81' e= N/A T.R.= N/A S.E. RUN= N/A P.C. STA= 8067+44.66 N= 1,872,211.86 E= 1,175,768.33 P.T. STA= 8069+25.12 N= 1,872,392.31 E= 1,175,766.72	CURVE D4702 P.I. STA= 7071+15.85 N= 1,872,344.72 E= 1,175,380.81 $\Delta = 3^{\circ} 54' 33''$ D= 0^{\circ} 57' 38'' R= 5964.00' T= 203.53' L= 406.91' E= 3.47' e= N/A T.R.= N/A S.E. RUN= N/A P.C. STA= 7069+12.32 N= 1,872,548.03 E= 1,175,371.29 P.T. STA= 7073+19.22 N= 1,872,142.54 E= 1,175,404.17	CURVE D4703 P.I. STA= 7080+48.13 N= 1,871,418.45 E= 1,175,487.83 $\Delta = 0^{\circ} 11' 56''$ D= 0^{\circ} 32' 51'' R= 10464.00' T= 18.16' L= 36.32' E= 0.02' e= N/A T.R.= N/A S.E. RUN= N/A P.C. STA= 7080+29.97 N= 1,871,436.49 E= 1,175,485.75 P.T. STA= 7080+66.29 N= 1,871,400.40 E= 1,175,489.86	CURVE A5501 P.I. STA= 5085+75.12 N= 1,869,719.11 E= 1,175,526.79 $\Delta = 3^{\circ} 02' 07''$ D= 1^{\circ} 08' 45'' R= 5000.00' T= 132.48' L= 264.89' E= 1.75' e= N/A T.R.= N/A S.E. RUN= N/A P.C. STA= 5084+42.65 N= 1,869,851.55 E= 1,175,530.23 P.T. STA= 5087+07.53 N= 1,869,586.69 E= 1,175,530.36	CURVE BL_WELL-5 P.I. STA= 589+41.99 N= 1,871,331.70 E= 1,175,478.71 $\Delta = 8^{\circ} 39' 04''$ D= 4^{\circ} 55' 51'' R= 1162.00' T= 87.89' L= 175.45' E= 3.32' e= N/A T.R.= N/A S.E. RUN= N/A P.C. STA= 588+54.10 N= 1,871,243.82 E= 1,175,479.94 P.T. STA= 590+29.55 N= 1,871,418.40 E= 1,175,464.29	CURVE BL_WELL-6 P.I. STA= 598+42.02 N= 1,872,219.86 E= 1,175,330.92 $\Delta = 7^{\circ} 55' 11''$ D= 2^{\circ} 30' 55'' R= 2278.00' T= 157.69' L= 314.87' E= 5.45' e= N/A T.R.= N/A S.E. RUN= N/A P.C. STA= 596+84.33 N= 1,872,064.31 E= 1,175,356.80 P.T. STA= 599+99.21 N= 1,872,377.49 E= 1,175,326.72
--	---	--	---	---	--



- NOTES:**
1. AVERAGE GRID TO GROUND CONVERSION FACTOR = 1.000010988654360
 2. FOR BENCH MARK INFORMATION, SEE SHEET 1 OF ALIGNMENT PLAN SHEETS.

REVISIONS	
NAME	DATE

ILLINOIS DEPARTMENT OF TRANSPORTATION
 F.A.I. 90/94 (DAN RYAN EXPRESSWAY)
 FENCE AND GATES VARIOUS LOCATIONS
 (71ST STREET TO 63RD STREET)
 ALIGNMENT PLAN

SCALE: 1"=100'
 DATE: JANUARY 14, 2009
 DRAWN BY: NJH
 CHECKED BY: RMG



2/3/2009 2:36:24 PM