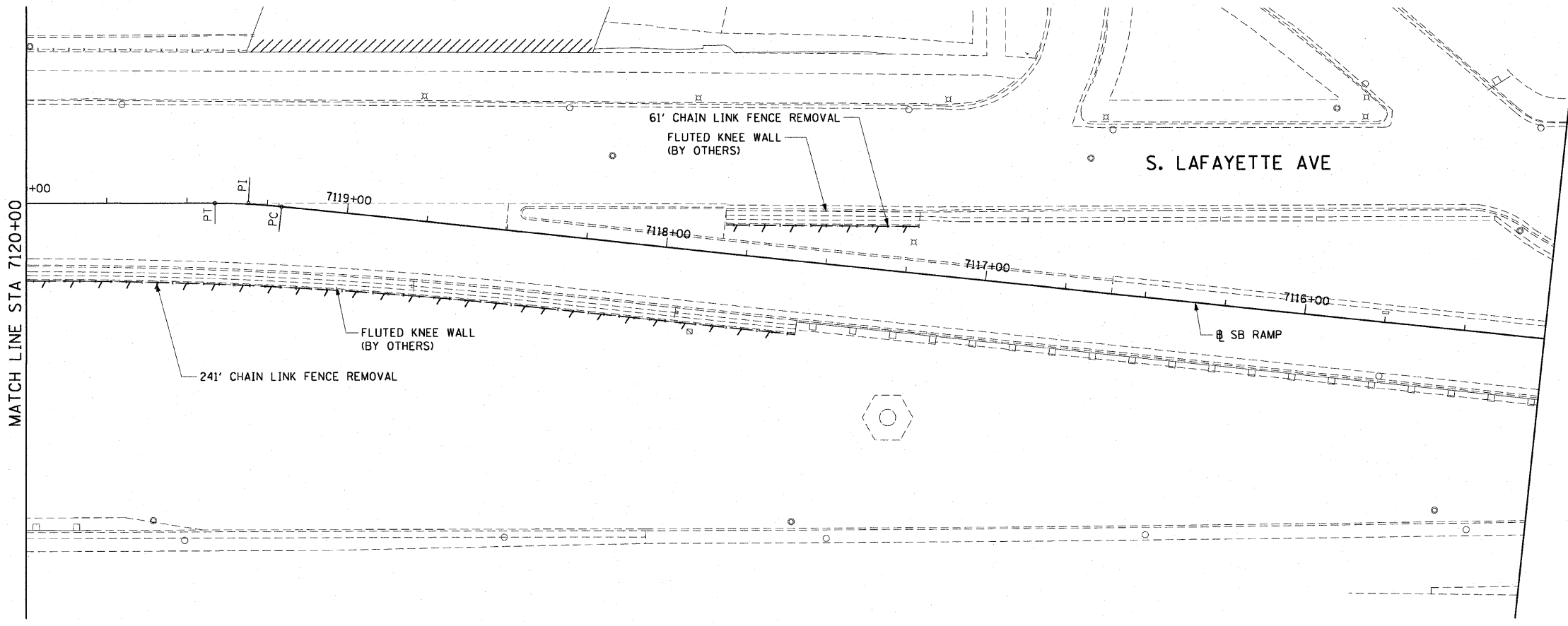
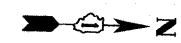


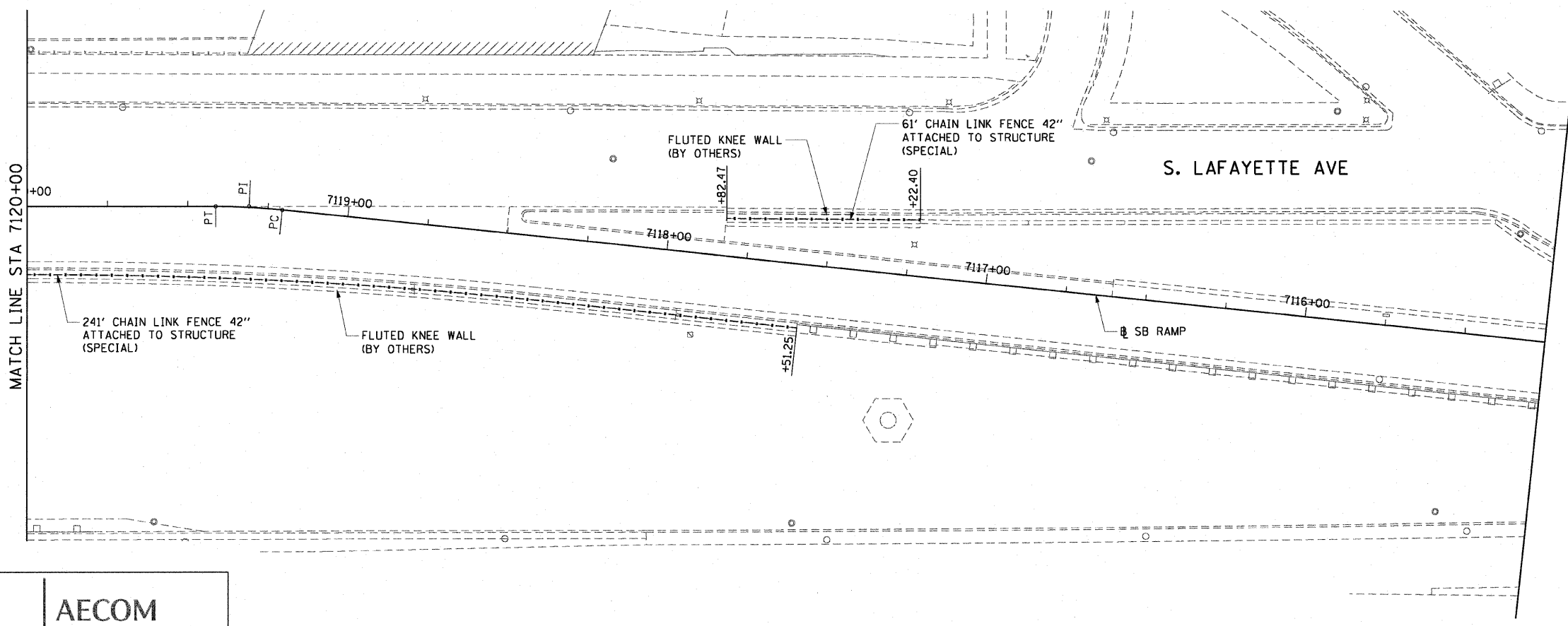
F.A.I. RTE.	SECTION	COUNTY	TOTAL SHEETS	SHEET NO.
90/94	2006-034 I	COOK	36	22
STA. 7115+25		TO STA. 7120+00		
FED. ROAD DIST. NO. 1	ILLINOIS	FED. AID PROJECT		

60B88



LEGEND:
 LINEAR REMOVALS

EXISTING CONDITIONS AND REMOVAL
 PROPOSED IMPROVEMENTS



- NOTES:
1. SEE STRUCTURAL DETAILS FOR CHAIN LINK FENCE DETAILS.
 2. ALL STATION CALLOUTS ARE TAKEN AT THE CENTERLINE OF THE CHAIN LINK FENCE.
 3. THE FLUTED KNEE WALL IS CONSTRUCTED IN CONTRACT 62984.

REVISIONS	
NAME	DATE

ILLINOIS DEPARTMENT OF TRANSPORTATION
 F.A.I. 90/94 (DAN RYAN EXPRESSWAY)
 FENCE AND GATES VARIOUS LOCATIONS
 (71ST STREET TO 63RD STREET)
 EXISTING AND PROPOSED ROADWAY

SCALE: 1"=20'
 DATE: JANUARY 14, 2009
 DRAWN BY: NJH
 CHECKED BY: RMG



\uscg\jif_p207\p40465\p40465.ctb\N28-Knee-wall\Fence.ctb\contract_4\p40465.ctb
 2/26/09 2:36:33 PM