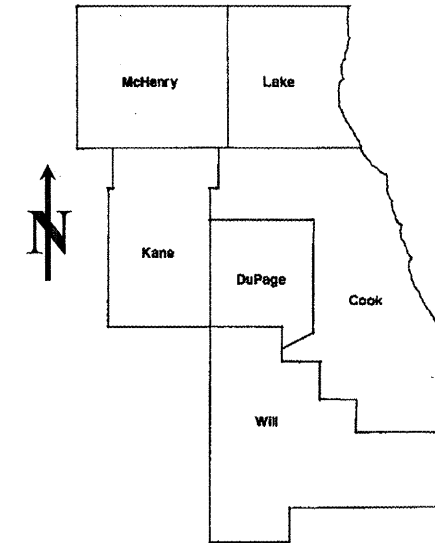


ROUTE	SECTION	COUNTY	TOTAL SHEETS	SHEET NUMBER
VARIOUS	2009-061PCC-PP	COOK	20	1

STATE OF ILLINOIS
DEPARTMENT OF TRANSPORTATION
DIVISION OF HIGHWAYS
DISTRICT ONE
PROPOSED HIGHWAY PLANS

CONTRACT NO. 60H52

D-91-735-09



LOCATION OF IMPROVEMENT INDICATED THUS: 

FOR INDEX OF SHEETS SEE SHEET 2

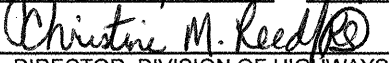
VARIOUS ROUTES
 SECTION: 2009-061PCC-PP
 VARIOUS LOCATIONS IN SOUTH COOK COUNTY
 P.C.C. PAVEMENT PATCHING
 COOK COUNTY
 C-91-735-09

STATE OF ILLINOIS
DEPARTMENT OF TRANSPORTATION
DIVISION OF HIGHWAYS

SUBMITTED: MAY 18, 2009

Diana M. O'Keefe DE
 DEPUTY DIRECTOR OF HIGHWAYS, REGION ENGINEER

June 26, 2009
Charles J. Ingersoll 
 ENGINEER OF DESIGN AND ENVIRONMENT

June 26, 2009
Christine M. Reed 
 DIRECTOR, DIVISION OF HIGHWAYS

PRINTED BY THE AUTHORITY
OF THE STATE OF ILLINOIS

J.U.L.I.E.: JOINT UTILITY LOCATION
INFORMATION FOR EXCAVATION
(312) 744-7000

CONTRACT NO. 60H52

DISTRICT ONE - DESIGN - PLAN PREPARATION ENGINEER:
 KEN ENG / (847) 705-4247

INDEX OF SHEETS

<u>SHEET NO.</u>	<u>DESCRIPTION</u>
1	TITLE SHEET
2	INDEX OF SHEETS, STATE STANDARDS AND GENERAL NOTES
3	SUMMARY OF QUANTITIES
4	GENERAL LOCATION MAP
5	SUMMARY OF PATCHING SCHEDULE
6-14	PATCHING SCHEDULE
15	TRAFFIC CONTROL AND PROTECTION FOR SIDE ROADS, INTERSECTIONS AND DRIVEWAYS
16	TYPICAL APPLICATIONS: RAISED REFLECTIVE PAVEMENT MARKERS (SNOW-PLOW RESISTANT)
17	DISTRICT ONE TYPICAL PAVEMENT MARKINGS
18	TRAFFIC CONTROL AND PROTECTION OF TURN BAYS (TO REMAIN OPEN TO TRAFFIC)
19	ARTERIAL ROAD INFORMATION SIGN
20	STANDARD TRAFFIC SIGNAL DESIGN DETAILS

STATE STANDARDS

<u>STANDARD NO.</u>	<u>DESCRIPTION</u>
000001	TYPICAL SYMBOLS, ABBREVIATIONS AND PATTERNS
442101	CLASS B PATCHES
701421	LANE CLOSURE, MULTILANE, DAY OPERATIONS ONLY
701422	LANE CLOSURE, MULTILANE
701426	LANE CLOSURE, MULTILANE, INTERMITTENT OR MOVING OPERATIONS
701601	URBAN LANE CLOSURE, MULTILANE, 1W OR 2W WITH NONTRAVERSABLE MEDIAN
701602	URBAN LANE CLOSURE, MULTILANE, 2W WITH BIDIRECTIONAL LEFT TURN LANE
701606	URBAN LANE CLOSURE, MULTILANE, 2W WITH MOUNTABLE MEDIAN
701701	URBAN LANE CLOSURE, MULTILANE INTERSECTION
701901	TRAFFIC CONTROL DEVICES

GENERAL NOTES

BEFORE STARTING ANY EXCAVATION, THE CONTRACTOR SHALL CALL "JULIE" AT (800) 892-0123 OR 811 FOR FIELD LOCATIONS OF BURIED ELECTRIC, TELEPHONE AND GAS FACILITIES. (48 HOUR NOTIFICATION REQUIRED)

THE CONTRACTOR WILL NOT BE ALLOWED TO SET UP A YARD OR FIELD OFFICE ON STATE (OR TOLLWAY) PROPERTY WITHOUT WRITTEN PERMISSION FROM THE DEPARTMENT (OR ISTHA)

WHEN ARTIFICIAL LIGHTING IS UTILIZED IN NIGHT OPERATIONS, THE CONTRACTOR SHALL EXERCISE THE UTMOST PRECAUTIONS IN PREVENTING ADVERSE VISIBILITY TO THE MOTORING PUBLIC AND ADJOINING RESIDENTIAL AREAS.

BEFORE BEGINNING ANY WORK, THE CONTRACTOR SHALL RETAIN AND RECORD FOR FUTURE REFERENCE, ALL EXISTING PAVEMENT MARKING LINES (AND RAISED REFLECTIVE PAVEMENT MARKERS) IN ORDER THAT THESE LOCATIONS CAN BE RE-ESTABLISHED FOR STRIPING. EXACT LOCATIONS OF ALL PAVEMENT MARKINGS SHALL BE AS DIRECTED BY THE ENGINEER.

ALL PAVEMENT PATCHING LOCATIONS WILL BE DETERMINED IN THE FIELD BY THE ENGINEER.

THE CONTRACTOR SHALL CONTACT THE DISTRICT ONE TRAFFIC CONTROL SUPERVISOR AT (847) 705-4470 A MINIMUM OF 72 HOURS IN ADVANCE OF BEGINNING WORK.

THE ENGINEER SHALL CONTACT MS. PATRICE HARRIS, AREA TRAFFIC FIELD ENGINEER AT (708) 597-9800 MINIMUM OF TWO (2) WEEKS PRIOR TO PLACEMENT OF PERMANENT PAVEMENT MARKINGS.

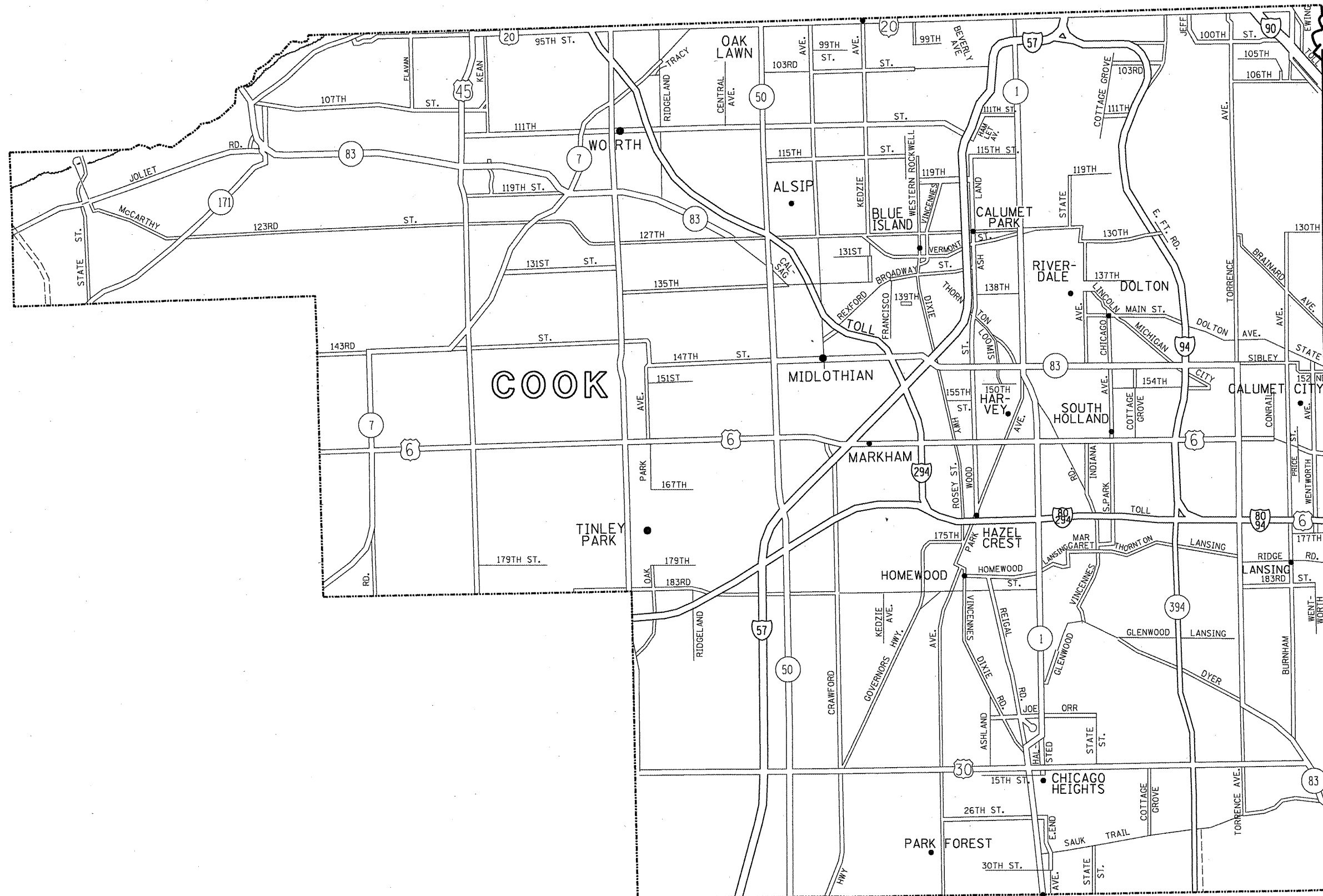
DOUBLE LANE MARKERS ARE TO BE USED AS SHOWN ON THE DISTRICT ONE DETAIL "TYPICAL APPLICATIONS - RAISED REFLECTIVE PAVEMENT MARKERS (SNOW-PLOW RESISTANT)" SHOWN IN THE PLANS.

THE EXISTING ROADWAY TYPICAL SECTION IS ASSUMED TO BE 10 INCHES OF PORTLAND CEMENT CONCRETE (PCC) PAVEMENT.

NO PATCHING IS TO BE DONE WITH IN 50 FEET OF ANY RAILROAD.

THE COST OF TRAFFIC CONTROL AND PROTECTION FOR THE PROJECT SHALL BE INCLUDED IN THE COST OF THE ASSOCIATED ROAD WORK.

SUMMARY OF QUANTITIES			URBAN 100% STATE TOTAL QUANTITIES	CONSTRUCTION TYPE CODE					SUMMARY OF QUANTITIES			TOTAL QUANTITIES	CONSTRUCTION TYPE CODE				
CODE NO	ITEM	UNIT		1000						CODE NO	ITEM		UNIT				
42101300	PROTECTIVE COAT	SO YD	5707	5707													
44001700	COMBINATION CONCRETE CURB AND GUTTER REMOVAL AND REPLACEMENT	FOOT	150	150													
44200970	CLASS B PATCHES, TYPE II, 10 INCH	SO YD	4807	4807													
44200974	CLASS B PATCHES, TYPE III, 10 INCH	SO YD	323	323													
44200976	CLASS B PATCHES, TYPE IV, 10 INCH	SO YD	698	698													
44213200	SAW CUTS	FOOT	26502	26502													
60300305	FRAMES AND LIDS TO BE ADJUSTED	EACH	10	10													
67000400	ENGINEER'S FIELD OFFICE, TYPE A	CAL MO	6	6													
67100100	MOBILIZATION	L SUM	1	1													
70103815	TRAFFIC CONTROL SURVEILLANCE	CAL DA	12	12													
*78008200	POLYUREA PAVEMENT MARKING TYPE I - LETTERS AND SYMBOLS	SO FT	150	150													
*78008210	POLYUREA PAVEMENT MARKING TYPE I - LINE 4"	FOOT	8742	8742													
*78008230	POLYUREA PAVEMENT MARKING TYPE I - LINE 6"	FOOT	200	200													
*78008270	POLYUREA PAVEMENT MARKING TYPE I - LINE 24"	FOOT	100	100													
*78100100	RAISED REFLECTIVE PAVEMENT MARKER	EACH	110	110													
*88600600	DETECTOR LOOP REPLACEMENT	FOOT	688	688													
X0322256	TEMPORARY INFORMATION SIGNING	SO FT	308.4	308.4													
Z0017202	DOWEL BARS 1 1/2"	EACH	15425	15425													
Z0075330	TIE BARS 1 1/4"	EACH	8140	8140													
* SPECIALTY ITEM																	



FILE NAME =	USER NAME = wilgreendp
ct:\pw\work\PWIDOT\WILGREENDP\d0125047\design.dgn	
PLOT SCALE = 100.0000' / IN.	
PLOT DATE = 5/18/2009	

DESIGNED -	REVISED -
DRAWN -	REVISED -
CHECKED -	REVISED -
DATE -	REVISED -

STATE OF ILLINOIS
DEPARTMENT OF TRANSPORTATION

GENERAL LOCATION MAP - SOUTH COOK COUNTY

SCALE: SHEET NO. OF SHEETS STA. TO STA.

F.A. RTE.	SECTION	COUNTY	TOTAL SHEETS	SHEET NO.
VAR.	2009-061PCC-PP	COOK	20	4
FED. ROAD DIST. NO.	ILLINOIS FED. AID PROJECT	CONTRACT NO. 60H52		

PCC PATCHING SUMMARY - SOUTH COOK COUNTY	CLASS B PATCHES, 10" TYPE II (SY)	CLASS B PATCHES, 10" TYPE III (SY)	CLASS B PATCHES, 10" TYPE IV (SY)
KEDZIE AVE. (131ST ST. TO 135TH ST.)	1276		196
PULASKI AVE. (98TH ST. TO 102ND ST.)	1273	189	142
135TH ST. (6200W TO 5500W)	470	114	360
STATE ST. (I-80 TO 167TH ST.)	72		
US 30 (WESTERN AVE. TO CICERO AVE.)	1561	20	
CHICAGO RD. (JOE ORR RD. TO 10TH ST.)	155		

SUMMARY TOTALS:

4807 323 698
(SY) (SY) (SY)

FILE NAME =	USER NAME = wilgreendp	DESIGNED -	REVISED -	STATE OF ILLINOIS DEPARTMENT OF TRANSPORTATION	SUMMARY OF PATCHING SCHEDULE SOUTH COOK COUNTY	F.A. RTE.	SECTION	COUNTY	TOTAL SHEETS	SHEET NO.
ct:\pvt\work\PWIDOT\WILGREENDP\0125047\design.dgn	DRAWN -	REVISED -	VAR.			2009-061PCC-PP	COOK	20	5	
PLOT SCALE = 100.0000' / IN.	CHECKED -	REVISED -	CONTRACT NO. 60H52							
PLOT DATE = 5/18/2009	DATE -	REVISED -	FED. ROAD DIST. NO. 1 ILLINOIS FED. AID PROJECT							
				SCALE:	SHEET NO. OF SHEETS	STA.	TO STA.			

ROUTE: Pulaski Ave. (98th St. to 102nd St.)

CROSS STREETS		DIRECTION (EB/WB) (NB/SB)	LANE NO. (1, 2, 3)	PAVEMENT PATCH WIDTH	PAVEMENT PATCH LENGTH	REPAIR AREA (SQ FT)	REPAIR AREA (SQ YD)
FROM	TO						
98th St.	102nd St.	SB	2	12	6	72	8
		SB	Turn	12	6	72	8
		SB	2	12	6	72	8
		SB	1	12	6	72	8
		SB	2	12	15	180	20
		SB	Turn	12	6	72	8
		SB	1	12	6	72	8
		SB	1	12	12	144	16
		SB	2	12	12	144	16
		SB	2	12	6	72	8
		SB	2	12	6	72	8
		SB	1	12	6	72	8
		SB	2	12	6	72	8
		SB	2	12	6	72	8
		SB	1	12	6	72	8
		SB	2	12	6	72	8
		SB	2	12	6	72	8
		SB	1	12	6	72	8
		SB	2	12	6	72	8
		SB	2	12	6	72	8
		SB	1	12	6	72	8
		SB	2	12	6	72	8
		SB	2	12	6	72	8
		SB	1	12	6	72	8
		SB	2	12	6	72	8
		SB	2	12	6	72	8
		SB	1	12	6	72	8
		SB	2	12	6	72	8
		SB	1	12	6	72	8
		SB	Turn	12	4	48	5
		SB	1	12	6	72	8
		SB	2	12	6	72	8
		SB	1	12	6	72	8
		SB	2	12	6	72	8
		SB	Turn	12	6	72	8
		SB	1	12	6	72	8
		SB	2	12	6	72	8
		SB	Turn	12	6	72	8
		SB	Turn	12	6	72	8
		SB	1	12	6	72	8
		SB	2	12	6	72	8
		SB	1	12	6	72	8
98th St.	102nd St.	SB	2	12	6	72	8
		SB	1	12	6	72	8
		SB	2	12	6	72	8
		SB	2	12	20	240	27
		SB	1	12	12	144	16
		SB	2	12	12	144	16
		SB	1	12	6	72	8
		SB	2	12	6	72	8
		SB	2	12	6	72	8
		SB	2	12	6	72	8
		SB	1	12	6	72	8
		SB	2	12	6	72	8
		SB	1	12	6	72	8
		SB	2	12	6	72	8
		SB	1	12	6	72	8
		SB	2	12	6	72	8
		SB	1	12	6	72	8
		SB	2	12	6	72	8
		SB	1	12	6	72	8
		SB	2	12	6	72	8
		SB	1	12	6	72	8

TOTALS: 1203 FT 1604 SY

FILE NAME =	USER NAME = wlgreendp	DESIGNED -	REVISED -	STATE OF ILLINOIS DEPARTMENT OF TRANSPORTATION	PATCHING SCHEDULE PULASKI AVE.			F.A. RTE.	SECTION	COUNTY	TOTAL SHEETS	SHEET NO.	
ca:\prk_work\PWIDOT\WILGREENDP\d0125047\design.dgn		DRAWN -	REVISED -		SCALE:	SHEET NO.	OF	SHEETS	STA.	TO STA.	COOK	20	9
PLOT SCALE = 100.0000' / IN.		CHECKED -	REVISED -		CONTRACT NO. 60H52								
PLOT DATE = 5/18/2009		DATE -	REVISED -		FED. ROAD DIST. NO. 1 ILLINOIS FED. AID PROJECT								

ROUTE: State St. from I-80 to 167th street.

CROSS STREETS		DIRECTION (EB/WB) (NB/SB)	LANE NO. (1, 2, 3)	PAVEMENT PATCH WIDTH	PAVEMENT PATCH LENGTH	REPAIR AREA (SQ FT)	REPAIR AREA (SQ YD)
FROM	TO						
I-80	167th street	NB	1	12	6	72	8
			1	12	6	72	8
			1	12	6	72	8
167th street	I-80	SB	2	12	6	72	8
			2	12	6	72	8
			2	12	6	72	8
			2	12	6	72	8
			2	12	6	72	8
			1	12	6	72	8

TOTALS:

54
FT

72
SY

FILE NAME =	USER NAME = wilgreendp	DESIGNED -	REVISED -	STATE OF ILLINOIS DEPARTMENT OF TRANSPORTATION	PATCHING SCHEDULE STATE ST.			F.A. RTE.	SECTION	COUNTY	TOTAL SHEETS	SHEET NO.			
ct:\p\work\WIDOT\WILGREENDP\0125047\design.dgn		DRAWN -	REVISED -		SCALE:	SHEET NO.	OF	SHEETS	STA.	TO STA.	VAR.	2009-061PCC-PP	COOK	20	11
		CHECKED -	REVISED -												
		DATE -	REVISED -												

ROUTE: US 30 from Western Ave. to Cicero Ave.

CROSS STREETS		DIRECTION (EB/WB) (NB/SB)	LANE NO. (1, 2, 3)	PAVEMENT PATCH WIDTH	PAVEMENT PATCH LENGTH	REPAIR AREA (SQ FT)	REPAIR AREA (SQ YD)
FROM	TO						
Hilltop	Western	WB	1	12	6	72	8
			LTL	12	6	72	8
			LTL	12	6	72	8
			LTL	12	6	72	8
Western	Brookwood	WB	1	12	10	120	13
			1	12	6	72	8
			1	12	6	72	8
			1	12	6	72	8
			1	12	6	72	8
			1	12	6	72	8
			1	12	6	72	8
			1	12	6	72	8
Brookwood	Orchard	WB	1	12	6	72	8
			1	12	6	72	8
			1	12	6	72	8
			1	12	6	72	8
			1	12	6	72	8
			1	12	6	72	8
			1	12	6	72	8
			1	12	6	72	8
Orchard	Olympian way	WB	1	12	6	72	8
			1	12	6	72	8
			1	12	6	72	8
			1	12	6	72	8
Olympian way	Main	WB	1	12	6	72	8
			LTL	12	6	72	8
			LTL	12	6	72	8
			LTL	12	6	72	8
Main	Crawford	WB	1	12	6	72	8
			1	12	6	72	8
Crawford	Kostner	WB	1	12	6	72	8
			LTL	12	6	72	8
Kostner	Cicero	WB	1	12	6	72	8
			LTL	12	6	72	8
Cicero	Kostner	WB	1	12	6	72	8
			1	12	6	72	8
			LTL	12	6	72	8
			LTL	12	6	72	8
Kostner	Crawford	WB	1	12	6	72	8
			1	12	6	72	8
			1	12	6	72	8
			1	12	6	72	8
Crawford	Main	WB	1	12	6	72	8
			1	12	6	72	8
			1	12	6	72	8
			1	12	6	72	8
Main	Olympian way	WB	1	12	6	72	8
			LTL	12	6	72	8
			LTL	12	6	72	8
			LTL	12	6	72	8

ROUTE: US 30 from Western Ave. to Cicero Ave.

CROSS STREETS		DIRECTION (EB/WB) (NB/SB)	LANE NO. (1, 2, 3)	PAVEMENT PATCH WIDTH	PAVEMENT PATCH LENGTH	REPAIR AREA (SQ FT)	REPAIR AREA (SQ YD)
FROM	TO						
Olympian way	Orchard	WB	1	12	6	72	8
			1	12	6	72	8
			1	12	6	72	8
			1	12	6	72	8
Orchard	Brookwood	WB	LTL	12	6	72	8
			1	12	10	120	13
			1	12	6	72	8
			1	12	6	72	8
Brookwood	Western	WB	1	12	6	72	8
			1	12	6	72	8
			1	12	6	72	8
			1	12	6	72	8
			1	12	6	72	8
			1	12	6	72	8
			1	12	6	72	8
			1	12	6	72	8
Western	Hilltop	WB	1	12	6	72	8
			1	12	8	96	11
			LTL	12	6	72	8
			LTL	12	6	72	8
Hilltop	Western	WB	2	12	6	72	8
			2	12	6	72	8
			2	12	6	72	8
			2	12	6	72	8
Western	Brookwood	WB	2	12	6	72	8
			2	12	10	120	13
			2	12	10	120	13
			2	12	10	120	13
Brookwood	Orchard	WB	2	12	10	120	13
			2	12	8	96	11
			2	12	6	72	8
			2	12	6	72	8
Orchard	Olympian	WB	2	12	6	72	8
			2	12	6	72	8
			2	12	6	72	8
			2	12	6	72	8
Olympian	Main	WB	2	12	6	72	8
			2	12	6	72	8
Main	Crawford	WB	2	12	6	72	8
			2	12	6	72	8
			2	12	8	96	11
			2	12	8	96	11
Crawford	Kostner	WB	2	12	6	72	8
			2	12	6	72	8
			2	12	8	96	11
			2	12	8	96	11
Kostner	Cicero	WB	2	12	6	72	8
			2	12	6	72	8

CONTINUED ON NEXT SHEET

FILE NAME =	USER NAME = wilgreendp	DESIGNED -	REVISED -	STATE OF ILLINOIS DEPARTMENT OF TRANSPORTATION	PATCHING SCHEDULE US 30			F.A. RTE.	SECTION	COUNTY	TOTAL SHEETS	SHEET NO.	
ct:\pw\work\VPWIDOT\WILGREENDP\d0125047\	design.dgn	DRAWN -	REVISED -		SCALE:	SHEET NO.	OF	SHEETS	STA.	TO STA.	COOK	20	12
		CHECKED -	REVISED -								CONTRACT NO. 60H52		
		DATE -	REVISED -								FED. ROAD DIST. NO. 1 (ILLINOIS) FED. AID PROJECT		

ROUTE: US 30 from Western Ave. to Cicero Ave.

CROSS STREETS		DIRECTION (EB/WB) (NB/SB)	LANE NO. (1, 2, 3)	PAVEMENT PATCH WIDTH	PAVEMENT PATCH LENGTH	REPAIR AREA (SQ FT)	REPAIR AREA (SQ YD)
FROM	TO						
Cicero	Kostner	EB	2	12	8	96	11
			2	12	6	72	8
			2	12	6	72	8
			2	12	6	72	8
			2	12	6	72	8
Kostner	Crawford	EB	2	12	8	96	11
			2	12	8	96	11
			2	12	6	72	8
			2	12	6	72	8
			2	12	6	72	8
			2	12	6	72	8
			2	12	10	120	13
			2	12	10	120	13
			2	12	7	84	9
Crawford	Main	EB	2	12	6	72	8
Main	Olympian		2	12	8	96	11
			2	12	8	96	11
			2	12	10	120	13
Olympian	Orchard	EB	2	12	6	72	8
			2	12	6	72	8
			2	12	6	72	8
			2	12	6	72	8
			2	12	6	72	8
Orchard	Brookwood	EB	2	12	6	72	8
Brookwood	Western	EB	2	12	6	72	8
			2	12	6	72	8
			2	12	6	72	8
			2	12	6	72	8
			2	12	10	120	13
Western	Hilltop	EB	2	12	6	72	8
			2	12	6	72	8
			2	12	6	72	8
			2	12	8	96	11
Hilltop	Western	WB	3	12	6	72	8
			3	12	6	72	8
			3	12	6	72	8
			3	12	6	72	8
Western	Brookwood	WB	3	12	6	72	8
			3	12	6	72	8
			3	12	8	96	11
			3	12	8	96	11
			3	12	10	120	13
Brookwood	Orchard	WB	3	12	8	96	11
			3	12	8	96	11
			3	12	8	96	11
			3	12	6	72	8
			3	12	6	72	8
			3	12	6	72	8

ROUTE: US 30 from Western Ave. to Cicero Ave.

CROSS STREETS		DIRECTION (EB/WB) (NB/SB)	LANE NO. (1, 2, 3)	PAVEMENT PATCH WIDTH	PAVEMENT PATCH LENGTH	REPAIR AREA (SQ FT)	REPAIR AREA (SQ YD)
FROM	TO						
Orchard	Olympian	WB	3	12	10	120	13
			3	12	10	120	13
			3	12	6	72	8
			3	12	6	72	8
			3	12	6	72	8
Olympian	Main	WB	3	12	6	72	8
Main	Crawford	WB	3	12	6	72	8
			3	12	6	72	8
Crawford	Kostner	WB	3	12	10	120	13
			3	12	10	120	13
			3	12	10	120	13
			3	12	15	180	20
			3	12	6	72	8
			3	12	8	96	11
Kostner	Cicero	WB	3	12	6	72	8
Cicero	Kostner	EB	3	12	6	72	8
			3	12	6	72	8
			3	12	6	72	8
Kostner	Crawford	EB	3	12	10	120	13
			3	12	6	72	8
			3	12	6	72	8
			3	12	6	72	8
			3	12	6	72	8
			3	12	8	96	11
Crawford	Main	EB	3	12	6	72	8
Main	Olympian	EB	3	12	6	72	8
			3	12	6	72	8
Olympian	Orchard	EB	3	12	10	120	13
			3	12	10	120	13
			3	12	6	72	8
			3	12	6	72	8
			3	12	6	72	8
			3	12	6	72	8
			3	12	6	72	8
			3	12	6	72	8
Orchard	Brookwood	EB	3	12	10	120	13
Brookwood	Western	EB	3	12	10	120	13
			3	12	10	120	13
			3	12	6	72	8
			3	12	6	72	8
			3	12	6	72	8
			3	12	6	72	8
Western	Hilltop	EB	3	12	6	72	8
			3	12	6	72	8
			3	12	6	72	8

TOTALS: 2112 FT 1581 SY

Design.dgn 5/18/2009 4:24:28 PM User=wilgreendp

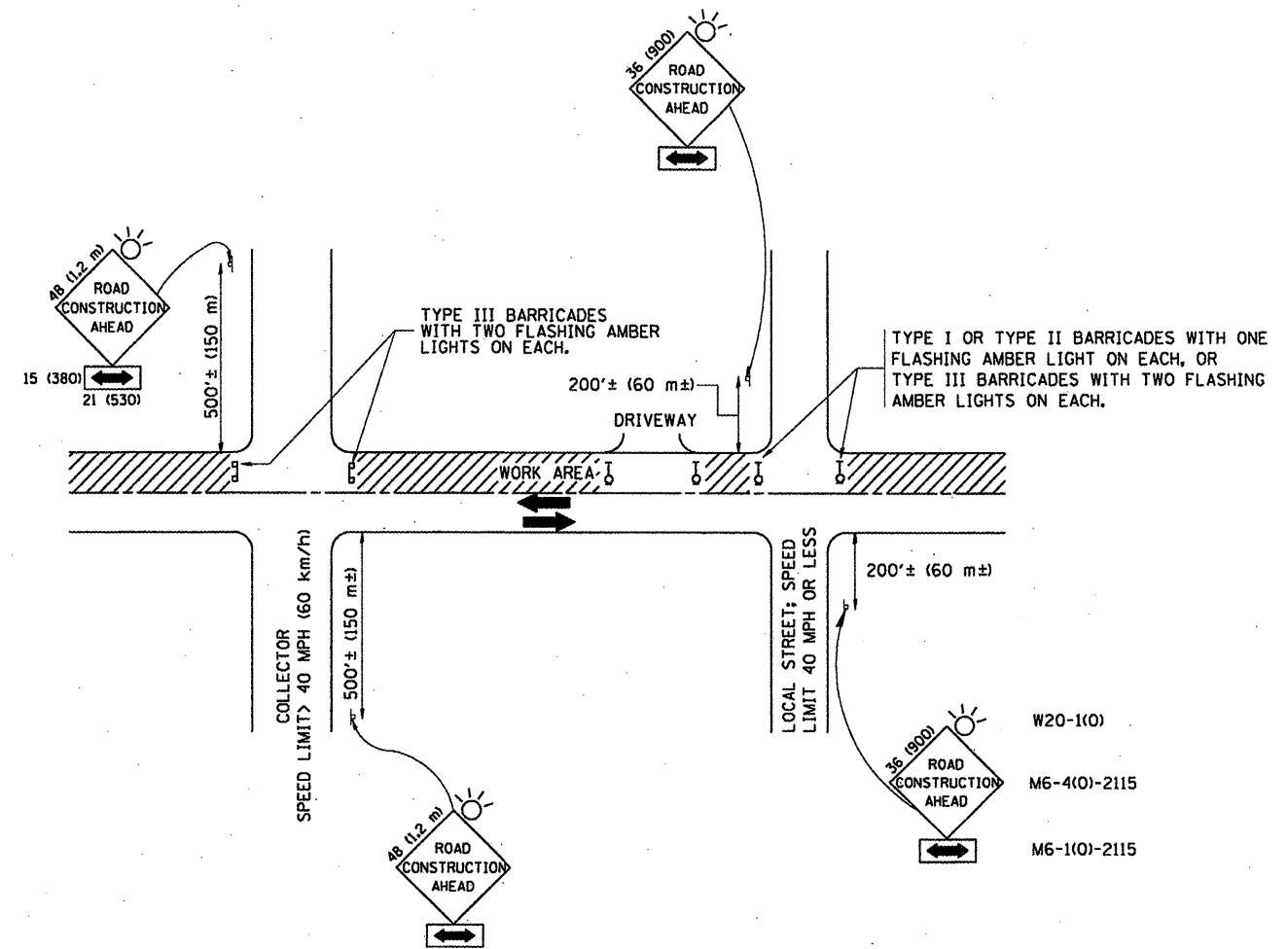
ROUTE: Chicago Road from Joe Orr Road to 10th St.

CROSS STREETS		DIRECTION (EB/WB) (NB/SB)	LANE NO. (1, 2, 3)	PAVEMENT PATCH WIDTH	PAVEMENT PATCH LENGTH	REPAIR AREA (SQ FT)	REPAIR AREA (SQ YD)
FROM	TO						
Joe Orr Rd	Parkside	SB	1	12	6	72	8
		SB	1	12	8	96	11
		SB	2	12	8	96	11
		SB	1	12	6	72	8
		SB	2	12	6	72	8
		SB	1	12	8	96	11
		SB	2	12	6	72	8
		SB	2	12	6	72	8
		SB	2	12	6	72	8
		SB	1	12	8	96	11
		SB	1	12	6	72	8
		SB	1	12	6	72	8
		SB	1	12	6	72	8
		SB	1	12	6	72	8
		SB	2	12	6	72	8
Parkside	Joe Orr Rd	NB	2	12	6	72	8
		NB	2	12	6	72	8
		NB	2	12	6	72	8
		NB	1	12	6	72	8
Parkside	10th St.						
Currently Overlaid							

TOTALS:

116
FT

155
SY



TRAFFIC CONTROL AND PROTECTION FOR SIDE ROADS, INTERSECTIONS, AND DRIVEWAYS

NOTES:

A. FOR NO LANE RESTRICTION ON THE SIDE ROAD OR DRIVEWAYS

1. SIDE ROAD WITH A SPEED LIMIT OF 40 MPH (60 km/h) OR LESS AS SHOWN ON THE DRAWING AND AS DIRECTED BY THE ENGINEER:

a) ONE **ROAD CONSTRUCTION AHEAD** SIGN 36 x 36 (900x900) WITH A FLASHER AND FLAG MOUNTED ON IT APPROXIMATELY 200' (60 m) IN ADVANCE OF THE MAIN ROUTE.

b) THE CLOSED PORTION OF THE MAIN ROUTE SHALL BE PROTECTED BY BLOCKING WITH TYPE I, TYPE II OR TYPE III BARRICADES, 1/3 OF THE CROSS SECTION OF THE CLOSED PORTION.

2. SIDE ROAD WITH A SPEED LIMIT GREATER THAN 40 MPH (60 km/h) AS SHOWN ON THE DRAWING AND AS DIRECTED BY THE ENGINEER:

a) ONE **ROAD CONSTRUCTION AHEAD** SIGN 48 x 48 (1.2 m x 1.2 m) WITH A FLASHER MOUNTED ON IT APPROXIMATELY 500' (150 m) IN ADVANCE OF THE MAIN ROUTE.

b) THE CLOSED PORTION OF THE MAIN ROUTE SHALL BE PROTECTED BY BLOCKING WITH TYPE III BARRICADES, 1/2 OF THE CROSS SECTION OF THE CLOSED PORTION.

3. WHEN THE SIDE ROAD LIES BETWEEN THE BEGINNING OF THE MAINLINE SIGNING AND THE WORK ZONE, A SINGLE HEADED ARROW (M6-1) SHALL BE USED IN LIEU OF THE DOUBLE HEADED ARROW (M6-4).

B. FOR A LANE CLOSURE ON A SIDE ROAD OR DRIVEWAY:

USE APPLICABLE PORTIONS OF THE TYPICAL APPLICATION OF TRAFFIC CONTROL DEVICES (STD. 701501, STD. 701606 OR THE APPROPRIATE STANDARD). THE SPACING OF SIGNS AND BARRICADES SHALL BE ADJUSTED FOR FIELD CONDITIONS AS DIRECTED BY THE ENGINEER. THE DIRECTIONAL ARROW SHALL BE COVERED OR REMOVED WHEN NO LONGER CONSISTENT WITH THE SIDE ROAD LANE CLOSURE.

C. ADVANCE WARNING SIGNS ARE TO BE OMITTED ON DRIVEWAY UNLESS OTHERWISE NOTED.

D. THE TRAFFIC CONTROL AND PROTECTION FOR SIDE ROADS, INTERSECTIONS, AND DRIVEWAYS SHALL BE INCIDENTAL TO THE COST OF SPECIFIED TRAFFIC CONTROL STANDARDS OR ITEMS.

All dimensions are in millimeters (inches) unless otherwise shown.

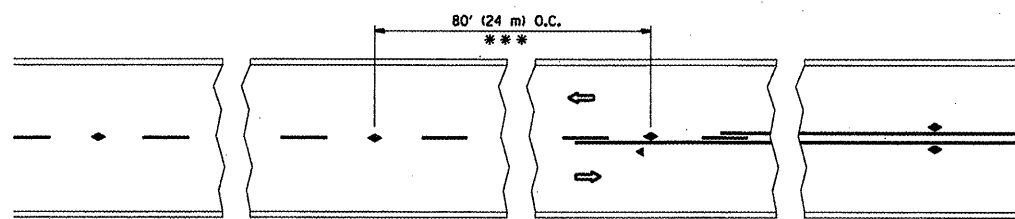
FILE NAME =	USER NAME = wilgreendp	DESIGNED - LHA	REVISED - J. OBERLE 10-18-95
ct:\p\work\PIWIDOT\WILGREENDP\0125047\10125047.dgn	DESIGNED - LHA	DRAWN -	REVISED - A. HOUSEH 03-06-96
PLOT SCALE = 1/8" = 1'-0"	CHECKED -	REVISOR - A. HOUSEH 10-15-96	
PLOT DATE = 5/18/2009	DATE - 06-89	REVISED - T. RAMMACHER 01-06-00	

**STATE OF ILLINOIS
DEPARTMENT OF TRANSPORTATION**

**TRAFFIC CONTROL AND PROTECTION FOR
SIDE ROADS, INTERSECTIONS, AND DRIVEWAYS**

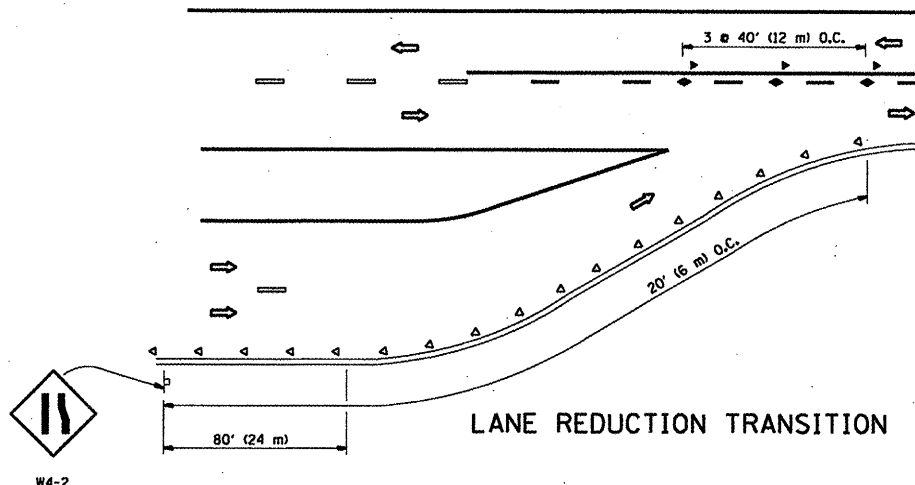
SCALE: NONE SHEET NO. 1 OF 1 SHEETS STA. TO STA.

F.A. RTEL.	SECTION	COUNTY	TOTAL SHEETS	SHEET NO.
VAR. 2009-061 PCC-PP	TC-10	COOK	20	15
FED. ROAD DIST. NO. 1 [ILLINOIS] FED. AID PROJECT			CONTRACT NO. 60452	

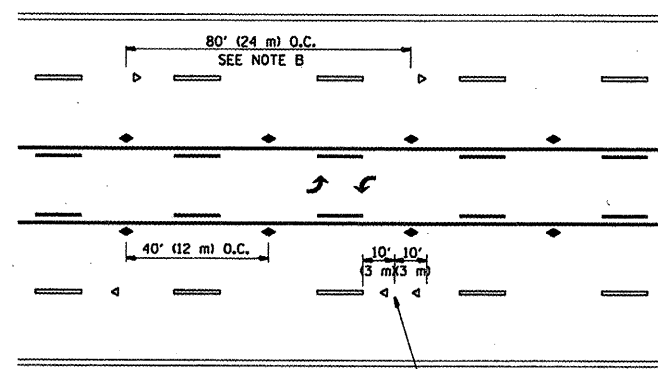


*** REDUCE TO 40' (12 m) O.C. ON CURVES WITH POSTED OR ADVISORY SPEED 45 M.P.H. (70 km/h) OR LESS.

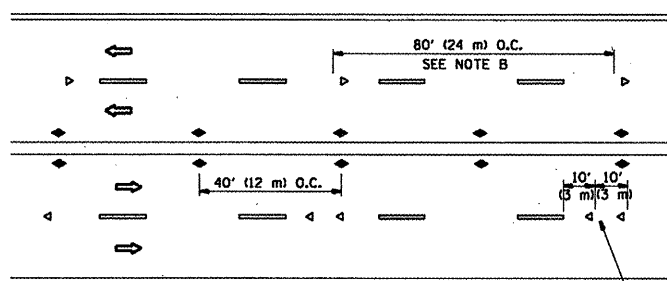
TWO-LANE/TWO-WAY



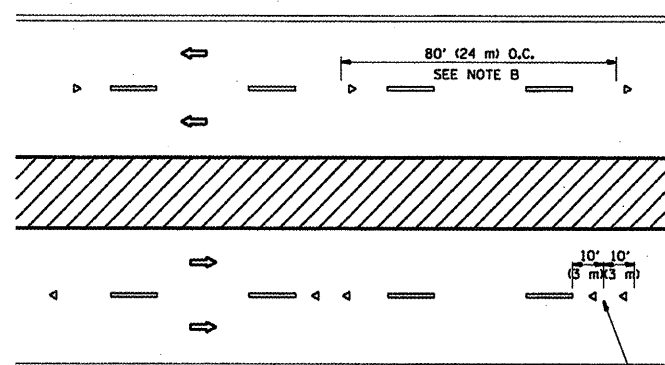
LANE REDUCTION TRANSITION



TWO-WAY LEFT TURN



MULTI-LANE/UNDIVIDED



MULTI-LANE/DIVIDED

GENERAL NOTES

1. MARKERS USED WITH DASHED LINES SHALL BE CENTERED IN THE GAP BETWEEN SEGMENTS.
2. MARKERS USED ADJACENT TO SOLID LINES SHALL BE OFFSET 2 TO 3 (50 TO 75) TOWARD TRAFFIC AS SHOWN.
3. MARKERS THROUGH TANGENTS LESS THAN 500' (150 m) IN LENGTH BETWEEN CURVES SHALL BE INSTALLED AT THE LESSER OF THE TWO CURVE SPACINGS.

SYMBOLS

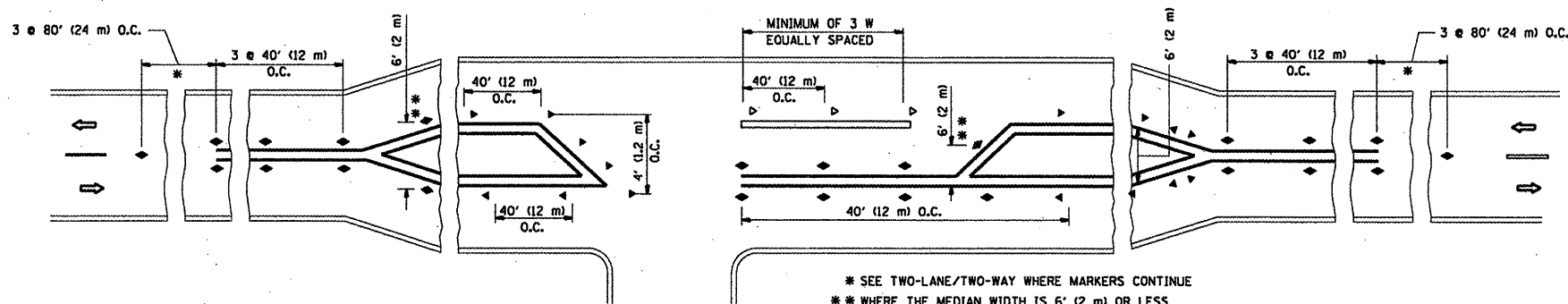
- YELLOW STRIPE
- WHITE STRIPE
- ◀ ONE-WAY AMBER MARKER
- ◀ ONE-WAY CRYSTAL MARKER (W/O)
- ◆ TWO-WAY AMBER MARKER

LANE MARKER NOTES

- B. REDUCE TO 40' (12 m) O.C. ON CURVES WHERE ADVISORY SPEEDS ARE 10 M.P.H (20 km/h) LOWER THAN POSTED SPEEDS.
- A. USE DOUBLE LANE LINE MARKERS SPACED AS SHOWN.

DESIGN NOTES

1. DOUBLE LANE LINE MARKERS SHALL BE USED UNLESS SPECIFIED OTHERWISE.
2. EXCEPT AS SHOWN ON THE LANE REDUCTION TRANSITION AND FREEWAY EXIT RAMP DETAIL, MARKERS ARE NOT TO BE SPECIFIED ON RIGHT EDGE LINES.
3. THE EXACT MARKER LIMITS, SPACING, AND COLOR SHOULD BE INCLUDED IN THE PLANS.
4. MARKERS SHOULD NOT BE USED ALONGSIDE CURBS EXCEPT FOR EXTREMELY SHORT SECTIONS OF CURBS WHERE NOT MORE THAN TWO MARKERS WOULD BE INVOLVED.



LEFT TURN

* SEE TWO-LANE/TWO-WAY WHERE MARKERS CONTINUE
 ** WHERE THE MEDIAN WIDTH IS 6' (2 m) OR LESS USE TWO-WAY MARKERS.

All dimensions are in inches (millimeters) unless otherwise shown.

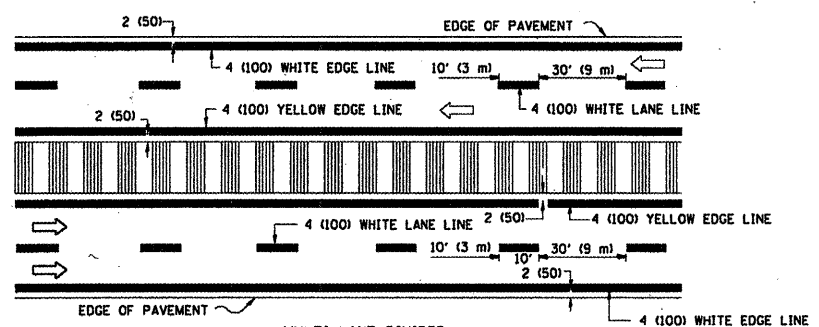
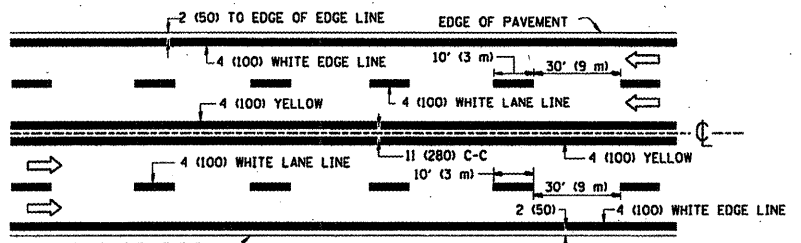
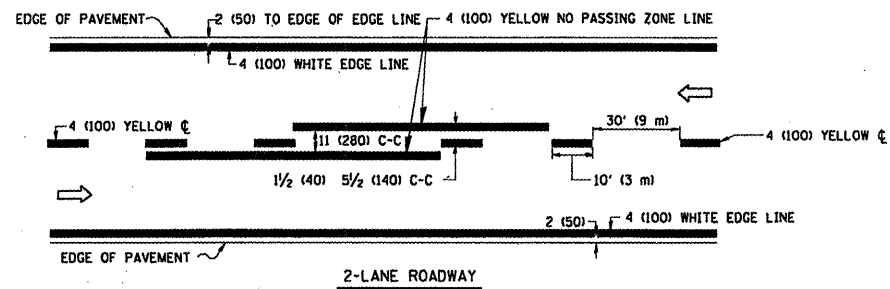
FILE NAME =	USER NAME = wilgreendp	DESIGNED -	REVISED - T. RAMMACHER 09-19-94
at\pwwork\pwidot\WILGREENDP\d0125047\stStd.dgn		DRAWN -	REVISED - T. RAMMACHER 03-12-99
	PLOT SCALE = 1/8" = 1'-0"	CHECKED -	REVISED - T. RAMMACHER 01-06-00
	PLOT DATE = 5/18/2009	DATE -	REVISED -

STATE OF ILLINOIS
 DEPARTMENT OF TRANSPORTATION

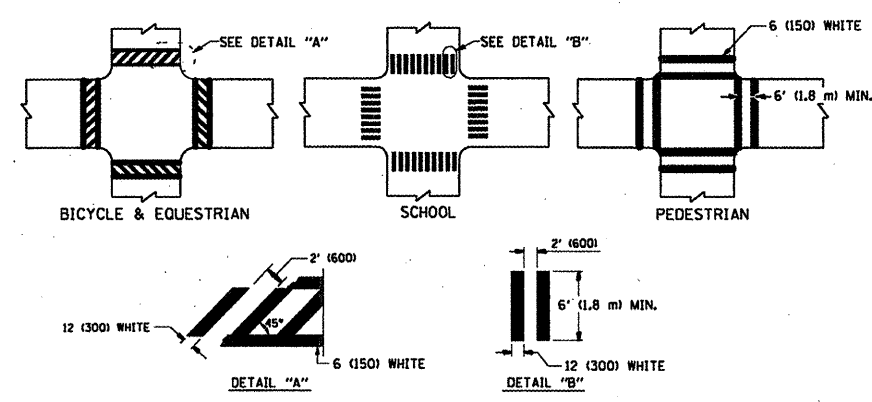
TYPICAL APPLICATIONS
 RAISED REFLECTIVE PAVEMENT MARKERS (SNOW-PLOW RESISTANT)

SCALE: NONE SHEET NO. 1 OF 1 SHEETS STA. TO STA.

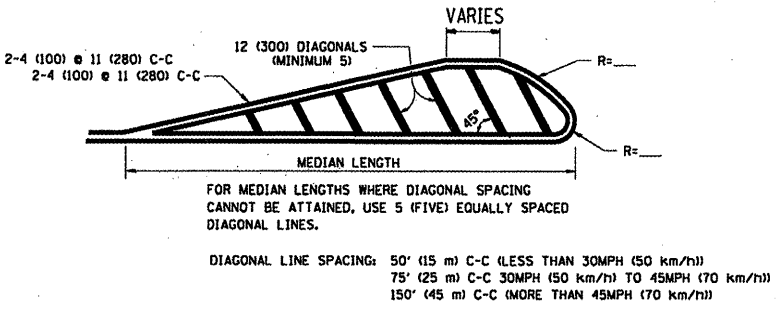
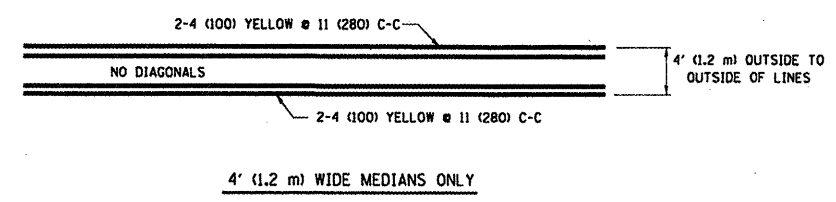
F.A. RTE.	SECTION	COUNTY	TOTAL SHEETS	SHEET NO.
VAR.	2009-061PCC-PP	COOK	20	16
	TC-11		CONTRACT NO. 60HS2	
FED. ROAD DIST. NO. 1 ILLINOIS FED. AID PROJECT				



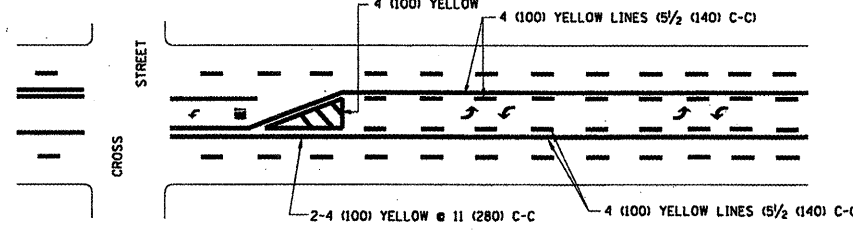
TYPICAL LANE AND EDGE LINE MARKING



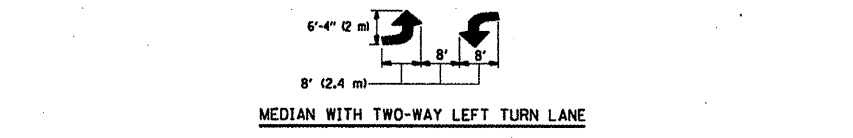
TYPICAL CROSSWALK MARKING



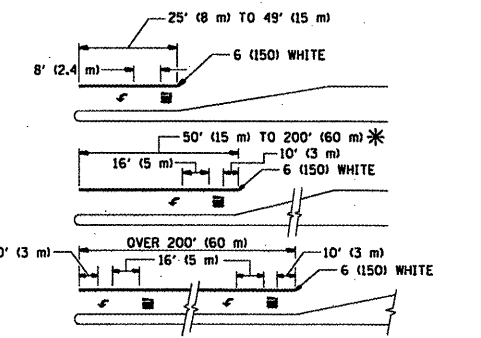
MEDIANS OVER 4' (1.2 m) WIDE



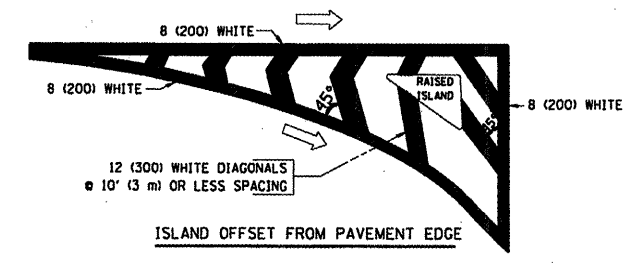
TYPICAL PAINTED MEDIAN MARKING



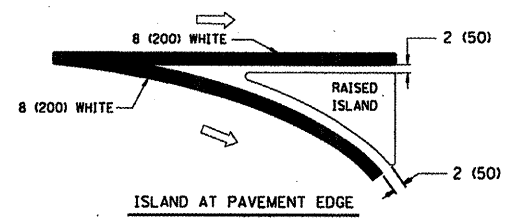
TYPICAL TURN LANE MARKING



TYPICAL LEFT (OR RIGHT) TURN LANE



ISLAND OFFSET FROM PAVEMENT EDGE



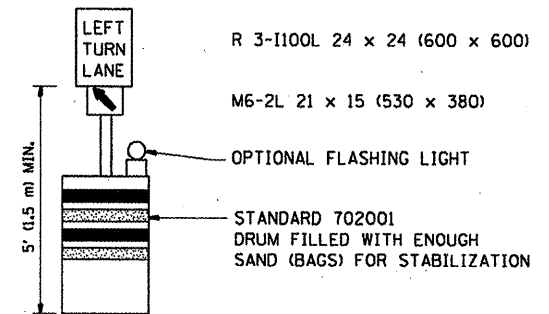
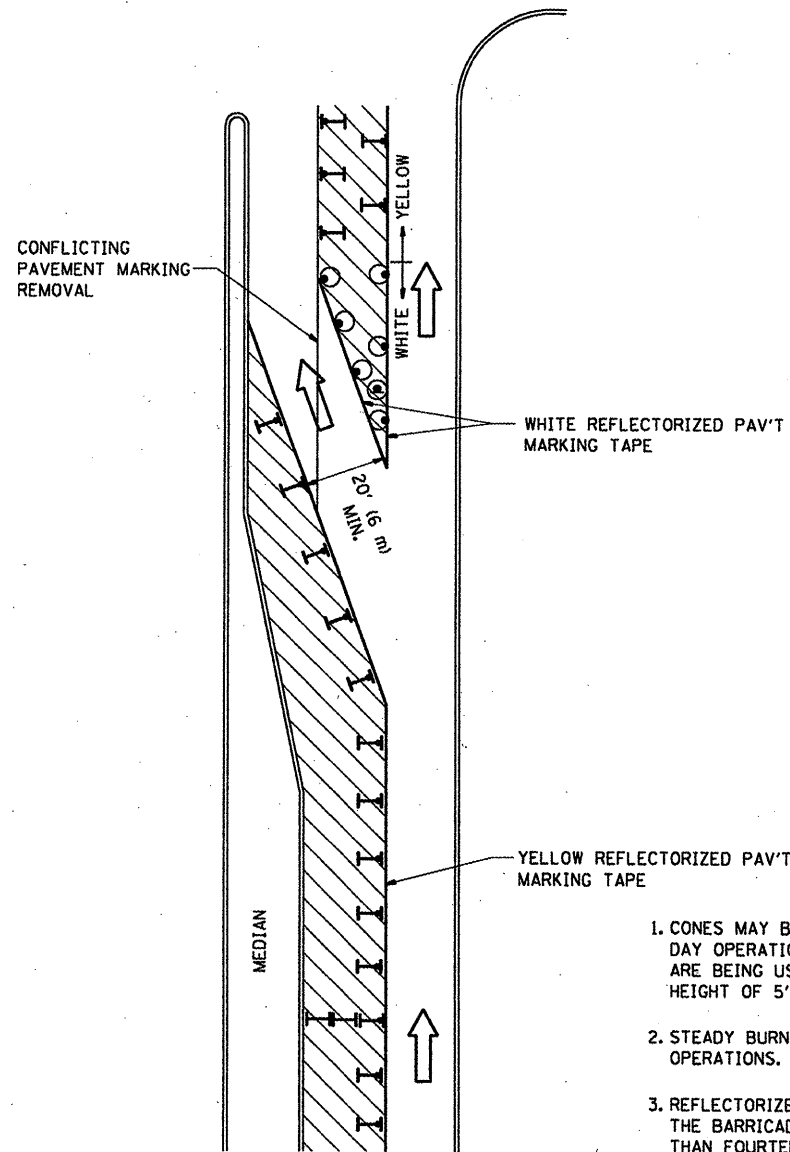
ISLAND AT PAVEMENT EDGE

TYPICAL ISLAND MARKING

TYPE OF MARKING	WIDTH OF LINE	PATTERN	COLOR	SPACING / REMARKS
CENTERLINE ON 2 LANE PAVEMENT	4 (100)	SKIP-DASH	YELLOW	10' (3 m) LINE WITH 30' (9 m) SPACE
CENTERLINE ON MULTI-LANE UNDIVIDED PAVEMENT	2 @ 4 (100)	SOLID	YELLOW	11 (280) C-C
NO PASSING ZONE LINES: FOR ONE DIRECTION FOR BOTH DIRECTIONS	4 (100) 2 @ 4 (100)	SOLID SOLID	YELLOW YELLOW	5/2 (140) C-C FROM SKIP-DASH CENTERLINE 11 (280) C-C OMIT SKIP-DASH CENTERLINE BETWEEN
LANE LINES	4 (100) 5 (125) ON FREEWAYS	SKIP-DASH SKIP-DASH	WHITE WHITE	10' (3 m) LINE WITH 30' (9 m) SPACE
DOTTED LINES (EXTENSIONS OF CENTER, LANE OR TURN LANE MARKINGS)	SAME AS LINE BEING EXTENDED	SKIP-DASH	SAME AS LINE BEING EXTENDED	2' (600) LINE WITH 6' (1.8 m) SPACE
EDGE LINES	4 (100)	SOLID	YELLOW-LEFT WHITE-RIGHT	OUTLINE MOUNTABLE MEDIANS IN YELLOW; EDGE LINES ARE NOT USED NEXT TO BARRIER CURB
TURN LANE MARKINGS	6 (150) LINE; FULL SIZE LETTERS & SYMBOLS (8' (2.4m))	SOLID	WHITE	SEE TYPICAL TURN LANE MARKING DETAIL
TWO WAY LEFT TURN MARKING	2 @ 4 (100) EACH DIRECTION 8' (2.4m) LEFT ARROW	SKIP-DASH AND SOLID IN PAIRS	YELLOW WHITE	10' (3 m) LINE WITH 30' (9 m) SPACE FOR SKIP-DASH; 5/2 (140) C-C BETWEEN SOLID LINE AND SKIP-DASH LINE SEE TYPICAL TWO-WAY LEFT TURN MARKING DETAIL
CROSSWALK LINES (PEDESTRIAN & BICYCLE & EQUESTRIAN) A. DIAGONALS (BIKE & EQUESTRIAN) B. LONGITUDINAL BARS (SCHOOL)	2 @ 6 (150) 12 (300) @ 45° 12 (300) @ 90°	SOLID SOLID SOLID	WHITE WHITE WHITE	NOT LESS THAN 6' (1.8 m) APART 2' (600) APART SEE TYPICAL CROSSWALK MARKING DETAILS.
STOP LINES	24 (600)	SOLID	WHITE	PLACE 4' (1.2 m) IN ADVANCE OF AND PARALLEL TO CROSSWALK, IF PRESENT, OTHERWISE, PLACE AT DESIRED STOPPING POINT, PARALLEL TO CROSSROAD CENTERLINE, WHERE POSSIBLE
PAINTED MEDIANS	2 @ 4 (100) WITH 12 (300) DIAGONALS @ 45° NO DIAGONALS USED FOR 4' (1.2 m) WIDE MEDIANS	SOLID	YELLOW; TWO WAY TRAFFIC WHITE; ONE WAY TRAFFIC	11 (280) C-C FOR THE DOUBLE LINE SEE TYPICAL PAINTED MEDIAN MARKING.
GORE MARKING AND CHANNELIZING LINES	8 (200) WITH 12 (300) DIAGONALS @ 45°	SOLID	WHITE	DIAGONALS: 15' (4.5 m) C-C (LESS THAN 30MPH (50 km/h)) 20' (6 m) C-C (30MPH (50 km/h) TO 45MPH (70 km/h)) 30' (9 m) C-C (OVER 45MPH (70 km/h))
RAILROAD CROSSING	24 (600) TRANSVERSE LINES; "RR" IS 6' (1.8 m) LETTERS; 16 (400) LINE FOR "X"	SOLID	WHITE	SEE STATE STANDARD 780001 AREA OF: "R"=3.6 SQ. FT. (0.33 m ²) EACH "X"=54.0 SQ. FT. (5.0 m ²)
SHOULDER DIAGONALS	12 (300) @ 45°	SOLID	WHITE - RIGHT YELLOW - LEFT	50' (15 m) C-C (LESS THAN 30MPH (50 km/h)) 75' (25 m) C-C (30 MPH (50 km/h) TO 45MPH (70 km/h)) 150' (45 m) C-C (OVER 45MPH (70 km/h))

FOR FURTHER DETAILS ON PAVEMENT MARKING REFER TO STANDARD SPECIFICATIONS FOR ROAD AND BRIDGE CONSTRUCTION AND STATE STANDARD 780001.

All dimensions are in inches (millimeters) unless otherwise shown.


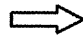



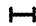


GENERAL NOTES

1. CONES MAY BE SUBSTITUTED FOR BARRICADES OR DRUMS AT HALF THE SPACING DURING DAY OPERATIONS. CONES SHALL BE A MINIMUM OF 28 (710) IN HEIGHT. WHEN CONES ARE BEING USED, THE "LEFT TURN LANE" SIGN MAY BE SKID MOUNTED AT A MINIMUM HEIGHT OF 5' (1.5 m).
2. STEADY BURNING LIGHTS WILL NOT BE REQUIRED ON BARRICADES OR DRUMS FOR DAY OPERATIONS. ALL LIGHTS SHALL BE MONODIRECTIONAL.
3. REFLECTORIZED TEMPORARY PAVEMENT MARKING TAPE SHALL BE PLACED THROUGHOUT THE BARRICADED AREA OF EACH TURN BAY WHERE THE CLOSURE TIME IS GREATER THAN FOURTEEN DAYS.
4. THIS APPLICATION ALSO APPLIES WHEN WORK IS BEING PERFORMED IN THE RIGHT LANE(S) AND THE RIGHT TURN BAY IS TO REMAIN OPEN. UNDER THIS CONDITION, "RIGHT TURN LANE" R3-100 24 x 24 (600 x 600) AND M6-2R 21 x 15 (530 x 380) SHALL BE USED.
5. THESE CONTROLS SHALL SUPPLEMENT MAINLINE TRAFFIC CONTROL FOR LANE CLOSURES.
6. LONGITUDINAL DIMENSIONS MAY BE ADJUSTED TO FIT FIELD CONDITIONS.
7. FORM BT 725 IS REQUIRED.
8. TRAFFIC CONTROL AND PROTECTION AT TURN BAYS (TO REMAIN OPEN TO TRAFFIC) SHALL BE INCLUDED IN THE COST SPECIFIED TRAFFIC CONTROL STANDARDS OR ITEMS.

All dimensions are in inches (millimeters) unless otherwise shown.

LEGEND

-  WORK AREA
-  LANE OPEN TO TRAFFIC
-  TYPE I OR II BARRICADE WITH STEADY BURN LIGHT
-  DRUM WITH STEADY BURN LIGHT
-  DRUM WITH SIGN (WITH OPTIONAL FLASHING LIGHT) SEE DETAIL
-  TYPE I OR II CHECK BARRICADE WITH FLASHING LIGHT

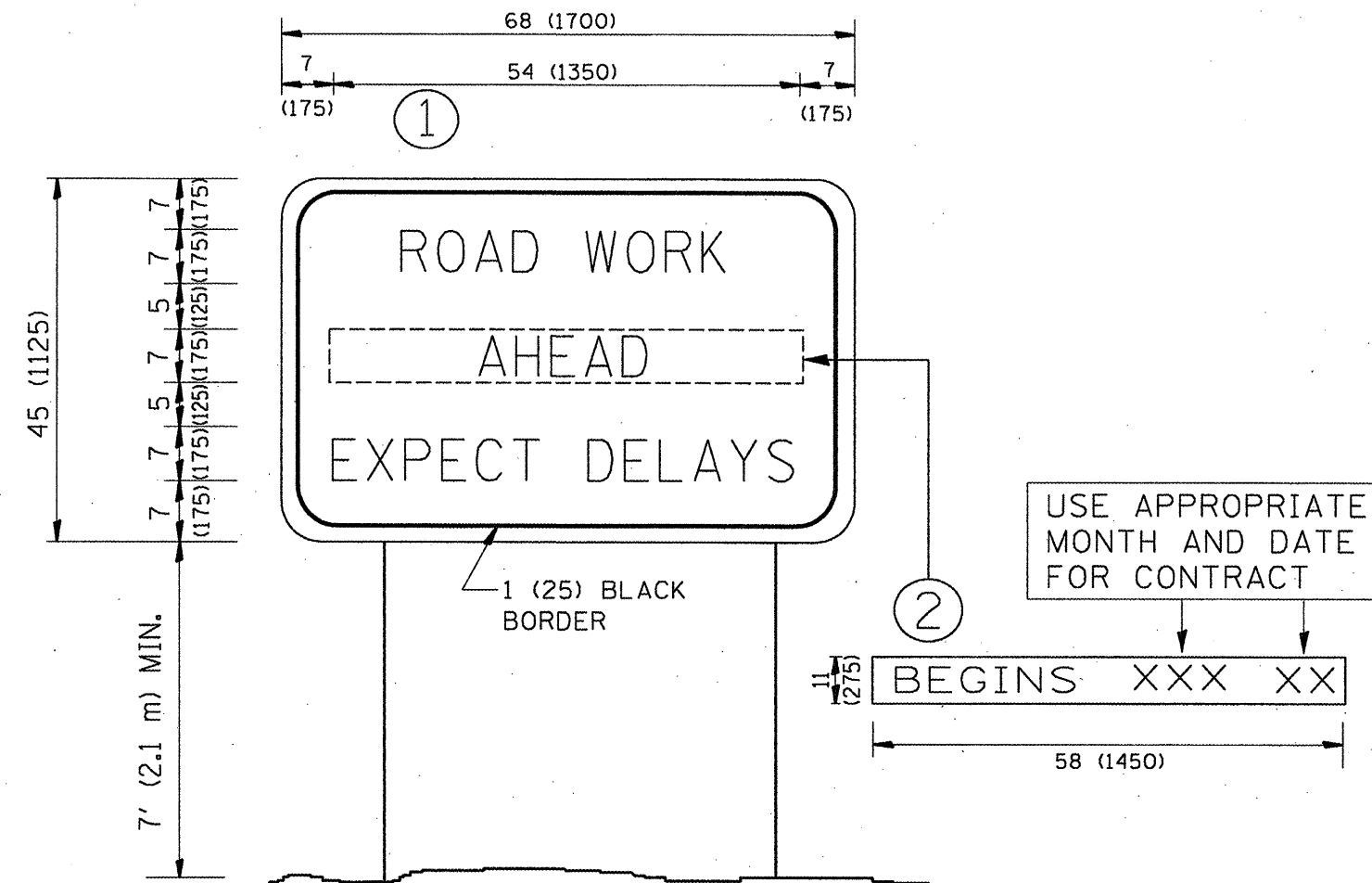
FILE NAME =	USER NAME = wilgreendp	DESIGNED -	REVISED - T. RAMMACHER 09-08-94
ct:\pwwork\pwwid\WILGREENDP\d0125047\d0125047.dgn	stStd.dgn	DRAWN -	REVISED - A. HOUSEH 11-07-95
PLOT SCALE = 100.0000 / IN.	CHECKED -	REVISED - A. HOUSEH 10-12-96	
PLOT DATE = 5/18/2009	DATE -	REVISED - T. RAMMACHER 01-06-00	

**STATE OF ILLINOIS
DEPARTMENT OF TRANSPORTATION**

**TRAFFIC CONTROL AND PROTECTION AT TURN BAYS
(TO REMAIN OPEN TO TRAFFIC)**

SCALE: NONE SHEET NO. 1 OF 1 SHEETS STA. TO STA.

F.A. RTE.	SECTION	COUNTY	TOTAL SHEETS	SHEET NO.
VAR. 2009-061 PCC-PP	COOK	20	18	
TC-14			CONTRACT NO. 60152	
FED. ROAD DIST. NO. 1 [ILLINOIS] FED. AID PROJECT				



NOTES:

1. USE BLACK LETTERING ON ORANGE BACKGROUND.
2. ERECT SIGNS IN ADVANCE OF THE LOCATION FOR THE "ROAD CONSTRUCTION AHEAD" SIGN AT LOCATIONS AS DIRECTED BY THE ENGINEER.
3. ERECT SIGN ① WITH INSTALLED PANEL ② ONE WEEK PRIOR TO THE START OF CONSTRUCTION.
4. REMOVE PANEL ② SOON AFTER THE START OF CONSTRUCTION.
5. SEE SPECIAL PROVISION FOR "TEMPORARY INFORMATION SIGNING" FOR ADDITIONAL INFORMATION.
6. ONE SIGN ASSEMBLY EQUALS 25.70 SQ. FT. (2.3 SQ. M.)
7. SHALL BE PAID FOR AS TEMPORARY INFORMATION SIGNING.

ALL DIMENSIONS ARE IN INCHES (MILLIMETERS) UNLESS OTHERWISE SHOWN.

FILE NAME =	USER NAME = wilgreendp	DESIGNED -	REVISED - R. MIRS 09-15-97
es:\pw_work\VPWIDOT\WILGREENDP\d0125047\d0125047.dgn		DRAWN -	REVISED - R. MIRS 12-11-97
		CHECKED -	REVISED - T. RAMMACHER 02-02-99
		DATE -	REVISED - C. JUCIUS 01-31-07

**STATE OF ILLINOIS
DEPARTMENT OF TRANSPORTATION**

**ARTERIAL ROAD
INFORMATION SIGN**

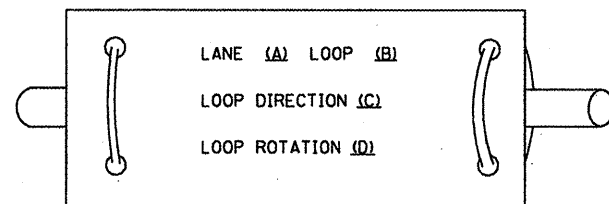
SCALE: NONE SHEET NO. 1 OF 1 SHEETS STA. TO STA.

F.A. RTE.	SECTION	COUNTY	TOTAL SHEETS	SHEET NO.
VAR. 2009-061 PCC-PP		COOK	20	19
	TC-22	CONTRACT NO. 60H52		
FED. ROAD DIST. NO. 1 ILLINOIS FED. AID PROJECT				

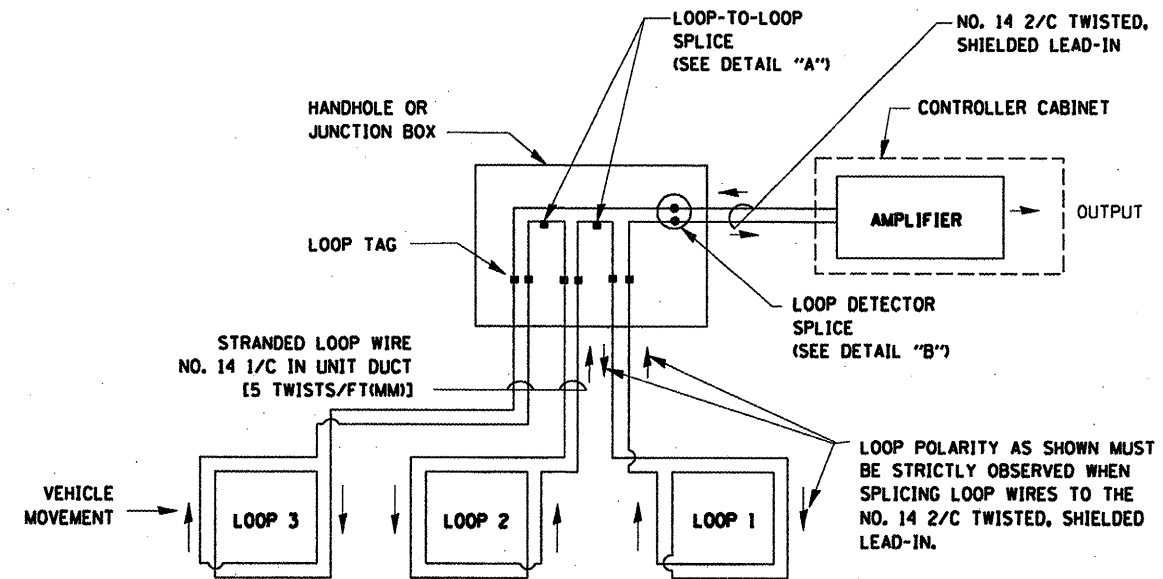
LOOP DETECTOR NOTES

- EACH PAIR OF LOOP WIRES SHALL BE PLACED IN A SEPARATE UNIT DUCT FROM THE EDGE OF PAVEMENT TO THE HANDHOLE. SPACING BETWEEN THE HOLES DRILLED IN THE PAVEMENT SHALL NOT BE LESS THAN 6" (150 mm). UNIT DUCT SHALL BE INCLUDED IN THE COST OF THE LOOP WIRE.
- THE NUMBER OF LOOP TURNS SHALL BE AS RECOMMENDED BY THE AMPLIFIER MANUFACTURER. ALL ADJACENT SIDES OF THE LOOPS SHALL BE INSTALLED IN SUCH A WAY THAT THE CURRENT FLOW IS IN THE SAME DIRECTION TO REINFORCE ITS MAGNETIC FIELDS FOR SMALL VEHICLE DETECTION.
- EACH LOOP LEAD-IN SHALL BE IDENTIFIED AND PERMANENTLY TAGGED IN THE HANDHOLE. EACH LEAD-IN CABLE TAG SHALL INDICATE THE LOCATION OF THE LOOP, LOOP ROTATION (CLOCKWISE/COUNTERCLOCKWISE), LOOP LEAD-IN DIRECTION (IN OR OUT), LOOP CABLE NUMBER AND LOCATION IN CABINET, AND NUMBER OF TURNS IN THE DETECTOR LOOPS IN WATER PROOF INK AS INDICATED ON THE DISTRICT 1 STANDARD TRAFFIC SIGNAL DESIGN DETAIL. THE CONTRACTOR SHALL MARK LOOP LOCATIONS ON RECORD DRAWINGS AND PRESENT TO THE ENGINEER AFTER FINAL INSPECTION. LOOPS SHALL BE MARKED BY LANE AND LOOP NUMBER. SEE DETAIL BELOW.
- ALL LOOP CABLE SHALL BE FASTENED WITH PLASTIC TIE WRAP TO THE HANDHOLE HOOKS.
- IN ASPHALT PAVEMENT, LOOPS SHOULD BE PLACED IN THE BINDER AND DIVESHOLES MARKED AT THE CURB WITH A SAW-CUT. THE SAW-CUT SHALL BE CUT IN ACCORDANCE WITH LOCAL AND E.P.A. DUST CONTROL REQUIREMENTS. DETECTOR LOOP(S) SHALL NOT BE INSTALLED IN WET CONDITIONS AND THE SAW-CUTS MUST BE FREE OF DEBRIS AND RESIDUE SUCH AS DUST AND WATER WHICH IS TO BE ACHIEVED BY THE USE OF COMPRESSED AIR, WIRE BRUSHING AND HEAT DRYING ACCORDING TO SEALANT MANUFACTURER REQUIREMENTS. THE DETECTOR WIRE SHALL BE HELD IN PLACE BY THE USE OF FORM WEDGES. WEDGES SHALL BE SPACED NO MORE THAN 18" (450 mm) APART.
- LOOP SPLICES SHALL BE SOLDERED USING A SOLDERING IRON. BLOW TORCHES OR OTHER DEVICES WHICH OXIDIZE COPPER CABLE SHALL NOT BE ALLOWED FOR SOLDERING OPERATIONS. SEE DETAIL BELOW RIGHT.
- PREFORMED DETECTOR LOOPS SHALL BE USED, AS SHOWN ON THE PLANS, WHERE NEW CONCRETE PAVEMENT IS PROPOSED. THE INSTALLATION OF PREFORMED LOOPS SHALL BE IN ACCORDANCE WITH THE DISTRICT 1 SPECIFICATIONS OR AS DIRECTED BY THE ENGINEER.

LOOP LEAD-IN CABLE TAG

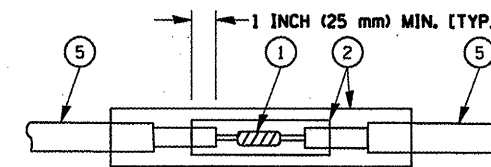


- LANE 1 IS THE LANE CLOSEST TO THE CENTERLINE OF THE ROADWAY
- LOOP #1 IS THE LOOP IN THE LANE CLOSEST TO THE INTERSECTION.
- LABEL LOOP CABLE "IN" OR LOOP CABLE "OUT".
- LABEL LOOP CABLE CLOCKWISE OR LOOP CABLE COUNTERCLOCKWISE.

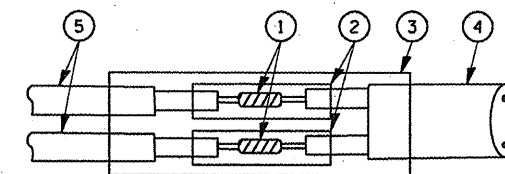


DETECTOR LOOP WIRING SCHEMATIC

- LOOPS SHALL BE SPLICED IN SERIES.
- SAW-CUTS SHALL BE A MINIMUM WIDTH OF 5/16" (8 mm).
- SAW-CUT DEPTHS SHALL BE 3" (75 mm), IF IN CONCRETE, THE SAW-CUT DEPTH SHALL BE TO THE TOP OF THE REINFORCEMENT.
- LOOP CORNERS SHALL BE DRILLED WITH A 2" (50 mm) DIAMETER CORE.



DETAIL "A"
LOOP-TO-LOOP SPLICE



DETAIL "B"
LOOP-TO-CONTROLLER SPLICE

LOOP DETECTOR SPLICE

- WESTERN UNION SPLICE SOLDERED WITH ROSIN CORE FLUX. ALL EXPOSED SURFACES OF THE SOLDER SHALL BE SMOOTH.
- WCSMW 30/100 HEAT SHRINK TUBE, MINIMUM LENGTH 3" (75 mm), UNDERWATER GRADE.
- WCS 200/750 HEAT SHRINK TUBE, MINIMUM LENGTH 6" (150 mm), UNDERWATER GRADE.
- NO. 14 2/C TWISTED, SHIELDED CABLE.
- LOOP CONDUCTOR WITH FLEXIBLE PLASTIC TUBE.

FILE NAME =	USER NAME = wilgreendp	DESIGNED - D.A.D.	REVISED - 11-12-01
ca:\pwwork\PMIDOT\WILGREENDP\d0125947\d0125947.dgn		DRAWN - R.W.P.	REVISED - BUR. TRAFFIC 01-01-02
PLOT SCALE = 100.0000' / IN.		CHECKED - D.A.Z.	REVISED -
PLOT DATE = 5/18/2009		DATE - 05-30-00	REVISED -

STATE OF ILLINOIS
DEPARTMENT OF TRANSPORTATION

DISTRICT ONE
STANDARD TRAFFIC SIGNAL DESIGN DETAILS

SCALE: NONE SHEET NO. 1 OF 4 SHEETS STA. TO STA.

F.A. RTE.	SECTION	COUNTY	TOTAL SHEETS	SHEET NO.
VAR. 2009-061PC-PP		COOK	20	20
	TS-05		CONTRACT NO. 60H52	
FED. ROAD DIST. NO. 1 (ILLINOIS) FED. AID PROJECT				