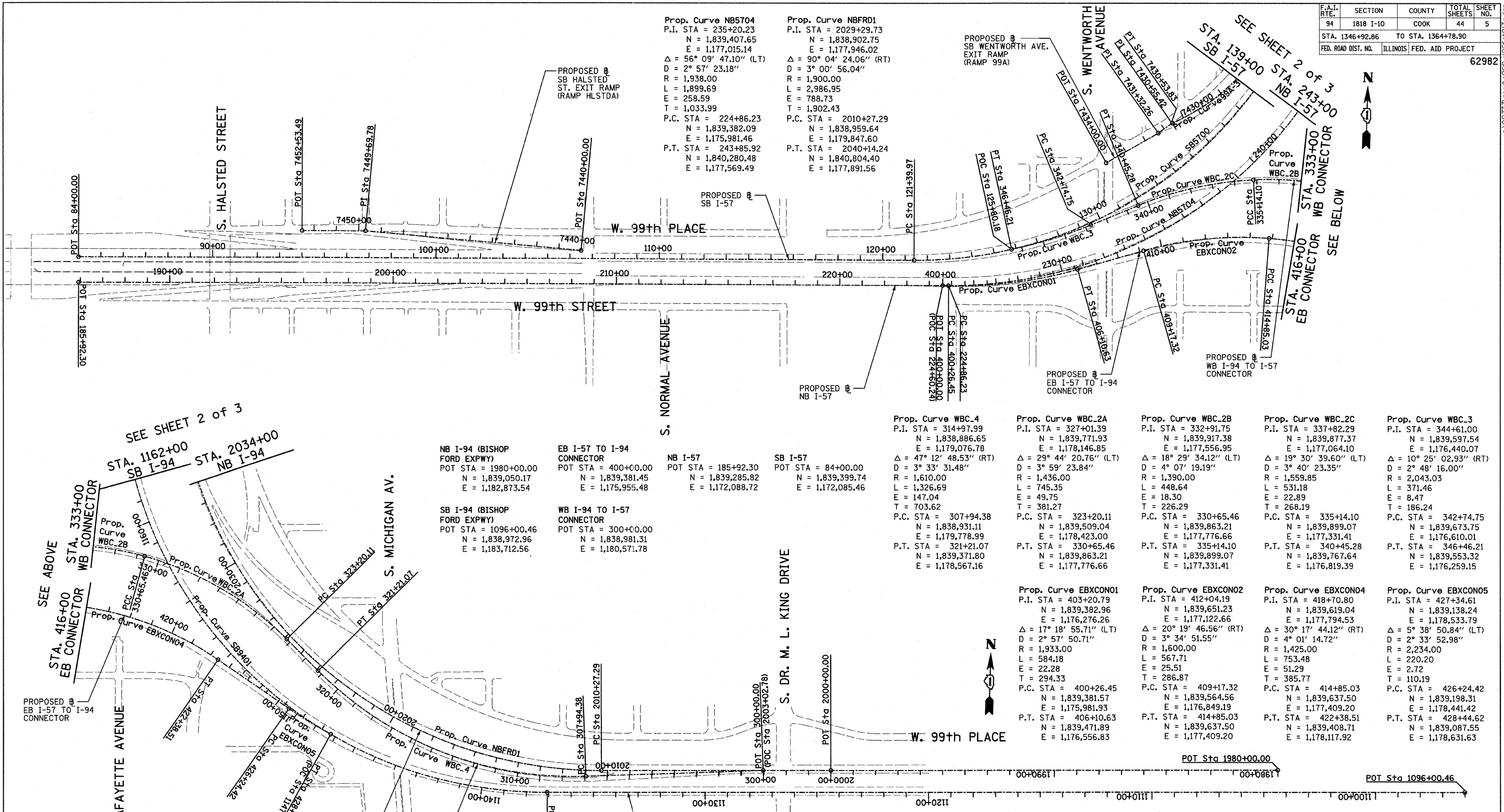


F.A.I. RYE	SECTION	COUNTY	TOTAL SHEETS	SHEET NO.
94	1818 I-10	COOK	44	5
STA. 1346+92.86		TO STA. 1364+78.90		
FED. ROAD DIST. NO.		ILLINOIS		FED. AID PROJECT
				62982



Prop. Curve NB5704  
P.I. STA = 235+20.23  
N = 1,839,407.65  
E = 1,177,015.14  
 $\Delta = 56^\circ 09' 47.10''$  (LT)  
D = 2° 57' 23.18"  
R = 1,938.00  
L = 1,899.69  
E = 258.59  
T = 1,033.99  
P.C. STA = 224+86.23  
N = 1,839,382.09  
E = 1,175,981.46  
P.T. STA = 243+85.92  
N = 1,840,280.48  
E = 1,177,569.49

Prop. Curve NBFRD1  
P.I. STA = 2029+29.73  
N = 1,838,902.75  
E = 1,177,946.02  
 $\Delta = 90^\circ 04' 24.06''$  (RT)  
D = 3° 00' 56.04"  
R = 1,900.00  
L = 2,986.95  
E = 788.73  
T = 1,902.43  
P.C. STA = 2010+27.29  
N = 1,838,959.64  
E = 1,179,847.60  
P.T. STA = 2040+14.24  
N = 1,840,804.40  
E = 1,177,891.56

NB I-94 (BISHOP FORD EXPWY)  
POT STA = 1980+00.00  
N = 1,839,050.17  
E = 1,182,873.54

EB I-57 TO I-94 CONNECTOR  
POT STA = 400+00.00  
N = 1,839,381.45  
E = 1,175,955.48

NB I-57  
POT STA = 185+92.30  
N = 1,839,285.82  
E = 1,172,088.72

SB I-57  
POT STA = 84+00.00  
N = 1,839,399.74  
E = 1,172,085.46

SB I-94 (BISHOP FORD EXPWY)  
POT STA = 1096+00.46  
N = 1,838,972.96  
E = 1,183,712.56

WB I-94 TO I-57 CONNECTOR  
POT STA = 300+00.00  
N = 1,838,981.31  
E = 1,180,571.78

Prop. Curve WBC.4  
P.I. STA = 314+97.99  
N = 1,838,886.65  
E = 1,179,076.78  
 $\Delta = 47^\circ 12' 48.53''$  (RT)  
D = 3° 33' 31.48"  
R = 1,610.00  
L = 1,326.69  
E = 147.04  
T = 703.62  
P.C. STA = 307+94.38  
N = 1,838,931.11  
E = 1,179,778.99  
P.T. STA = 321+21.07  
N = 1,839,371.80  
E = 1,178,567.16

Prop. Curve WBC.2A  
P.I. STA = 327+01.39  
N = 1,839,771.93  
E = 1,178,146.85  
 $\Delta = 29^\circ 44' 20.76''$  (LT)  
D = 3° 59' 23.84"  
R = 1,436.00  
L = 745.35  
E = 49.75  
T = 226.29  
P.C. STA = 323+20.11  
N = 1,839,509.04  
E = 1,178,423.00  
P.T. STA = 330+65.46  
N = 1,839,863.21  
E = 1,177,776.66

Prop. Curve WBC.2B  
P.I. STA = 332+91.75  
N = 1,839,917.38  
E = 1,177,556.95  
 $\Delta = 18^\circ 29' 34.12''$  (LT)  
D = 4° 07' 19.19"  
R = 1,390.00  
L = 448.64  
E = 18.30  
T = 226.29  
P.C. STA = 330+65.46  
N = 1,839,863.21  
E = 1,177,776.66  
P.T. STA = 335+14.10  
N = 1,839,899.07  
E = 1,177,331.41

Prop. Curve WBC.2C  
P.I. STA = 337+82.29  
N = 1,839,877.37  
E = 1,177,064.10  
 $\Delta = 19^\circ 30' 39.60''$  (LT)  
D = 3° 40' 23.35"  
R = 1,559.85  
L = 531.18  
E = 22.89  
T = 268.19  
P.C. STA = 335+14.10  
N = 1,839,899.07  
E = 1,177,331.41  
P.T. STA = 340+45.28  
N = 1,839,767.64  
E = 1,176,819.39

Prop. Curve WBC.3  
P.I. STA = 344+61.00  
N = 1,839,597.54  
E = 1,176,440.07  
 $\Delta = 10^\circ 25' 02.93''$  (RT)  
D = 2° 48' 16.00"  
R = 2,043.03  
L = 371.46  
E = 8.47  
T = 186.24  
P.C. STA = 342+74.75  
N = 1,839,673.75  
E = 1,176,610.01  
P.T. STA = 346+46.21  
N = 1,839,553.32  
E = 1,176,259.15

Prop. Curve EBXC001  
P.I. STA = 403+20.79  
N = 1,839,382.96  
E = 1,177,122.66  
 $\Delta = 17^\circ 18' 55.71''$  (LT)  
D = 2° 57' 50.71"  
R = 1,933.00  
L = 584.18  
E = 22.28  
T = 294.33  
P.C. STA = 400+26.45  
N = 1,839,381.57  
E = 1,175,981.93  
P.T. STA = 406+10.63  
N = 1,839,471.89  
E = 1,176,556.83

Prop. Curve EBXC002  
P.I. STA = 412+04.19  
N = 1,839,651.23  
E = 1,177,122.66  
 $\Delta = 20^\circ 19' 46.56''$  (RT)  
D = 3° 34' 51.55"  
R = 1,600.00  
L = 567.71  
E = 25.51  
T = 286.87  
P.C. STA = 409+17.32  
N = 1,839,564.56  
E = 1,176,849.19  
P.T. STA = 414+85.03  
N = 1,839,637.50  
E = 1,177,409.20

Prop. Curve EBXC004  
P.I. STA = 418+70.80  
N = 1,839,619.04  
E = 1,177,945.53  
 $\Delta = 30^\circ 17' 44.12''$  (RT)  
D = 4° 01' 14.72"  
R = 1,425.00  
L = 753.48  
E = 51.29  
T = 385.77  
P.C. STA = 414+85.03  
N = 1,839,637.50  
E = 1,177,409.20  
P.T. STA = 422+38.51  
N = 1,839,408.71  
E = 1,178,117.92

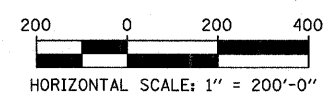
Prop. Curve EBXC005  
P.I. STA = 427+34.61  
N = 1,839,138.24  
E = 1,178,533.79  
 $\Delta = 5^\circ 38' 50.84''$  (LT)  
D = 2° 33' 52.98"  
R = 2,234.00  
L = 220.20  
E = 2.72  
T = 110.19  
P.C. STA = 426+24.42  
N = 1,839,198.31  
E = 1,178,441.42  
P.T. STA = 428+44.62  
N = 1,839,087.55  
E = 1,178,631.63

SEE SHEET 2 of 3  
STA. 1162+00  
SB I-94

STA. 2034+00  
NB I-94

SEE ALIGNMENT SHEET 4 OF 4 FOR ADDITIONAL POINT AND CURVE DATA

REVISIONS		ILLINOIS DEPARTMENT OF TRANSPORTATION	
NAME	DATE	F.A.I. 94 (DAN RYAN EXPRESSWAY)	
		ALIGNMENT PLAN	
		SHEET 1 OF 4	
		SCALE: 1"=200'-0"	DRAWN BY: JPM
		DATE: FEBRUARY 13, 2009	CHECKED BY: DAK



TYLIN INTERNATIONAL

3/19/2009 3:52:03 PM