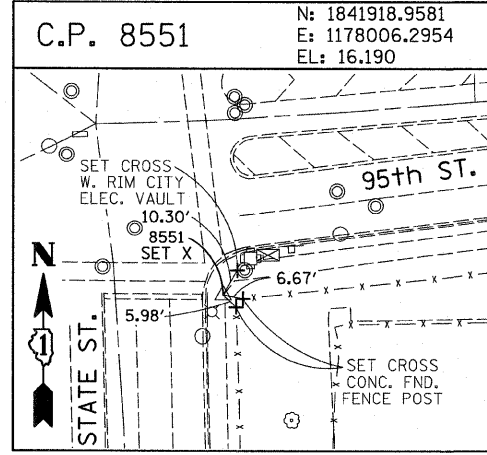
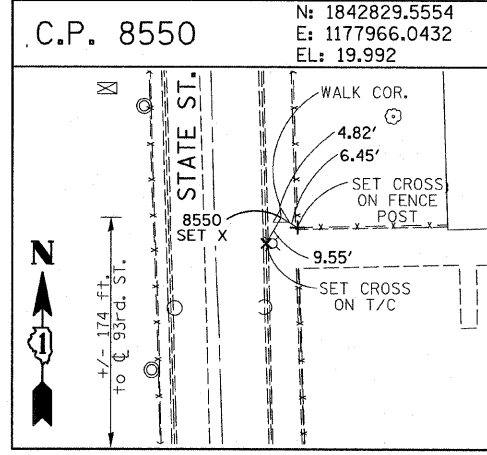
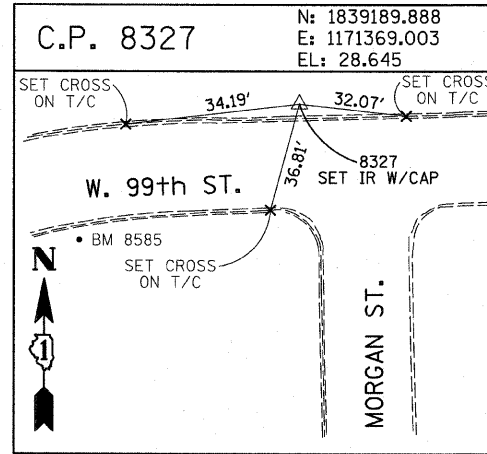
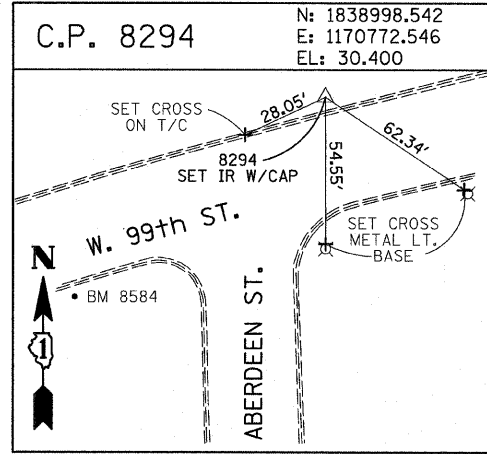
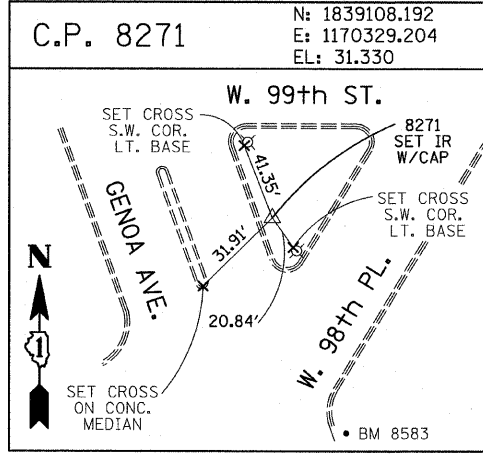
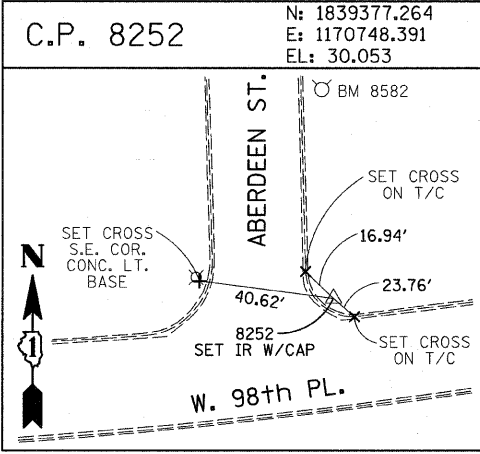
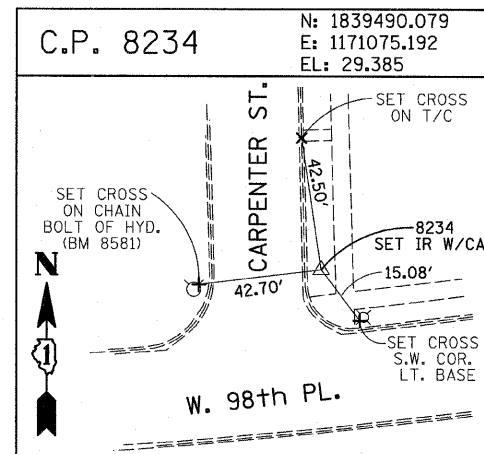
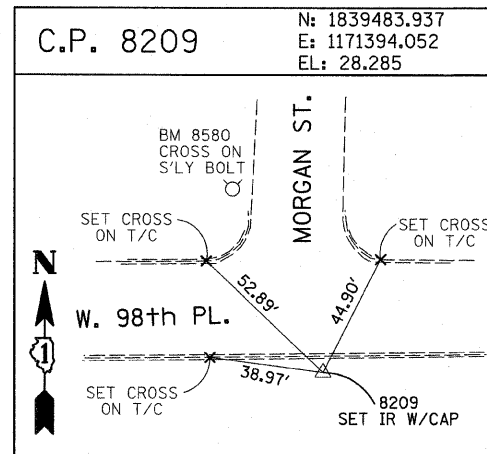
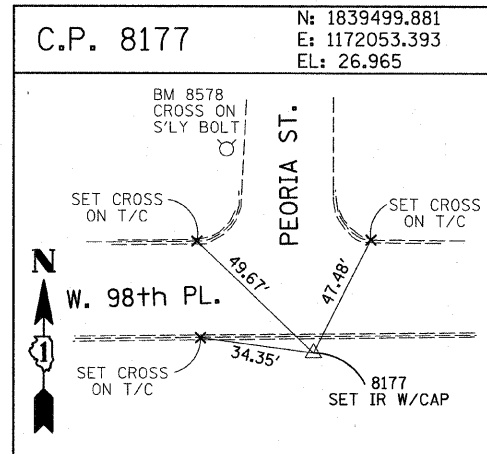
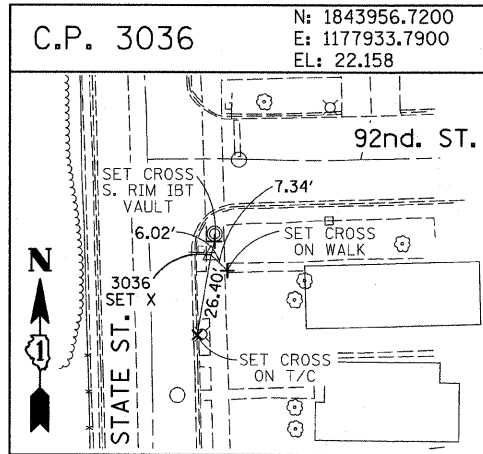
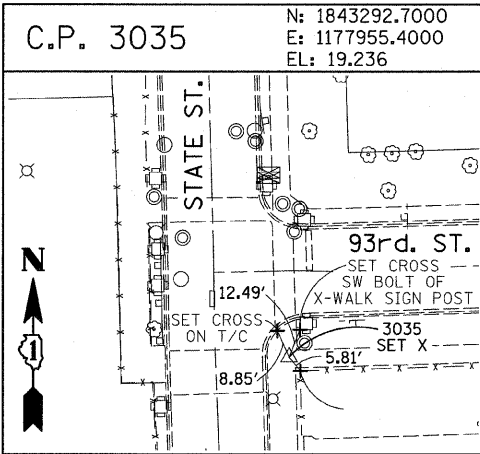
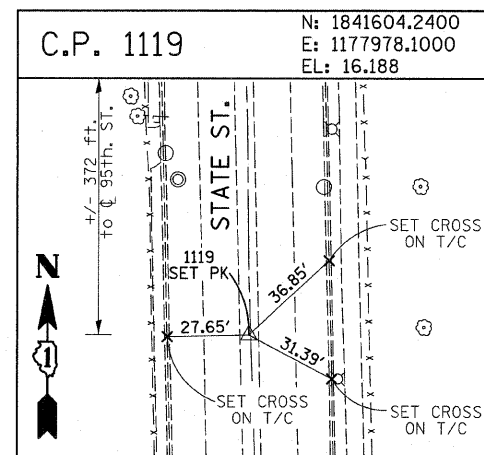
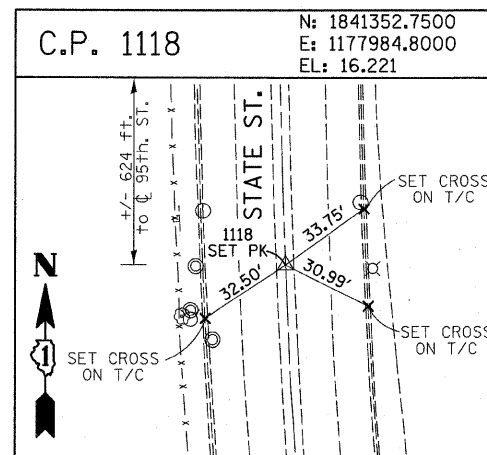
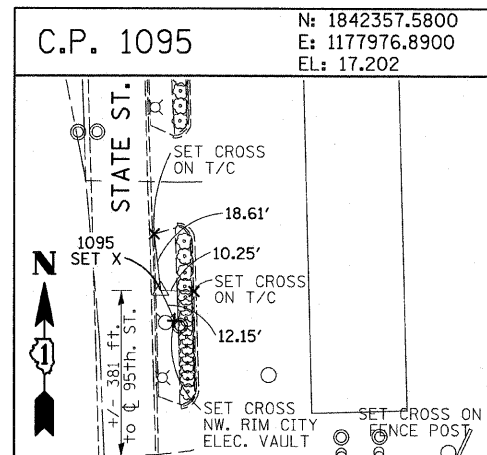
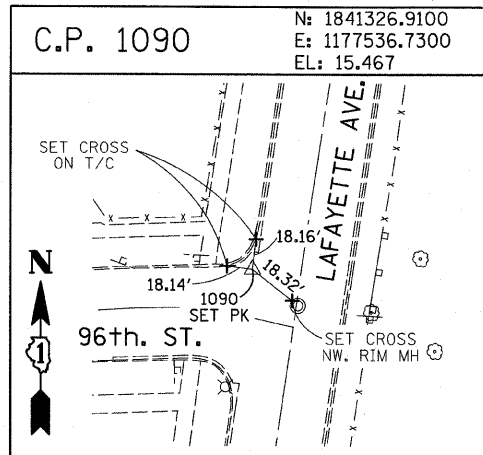
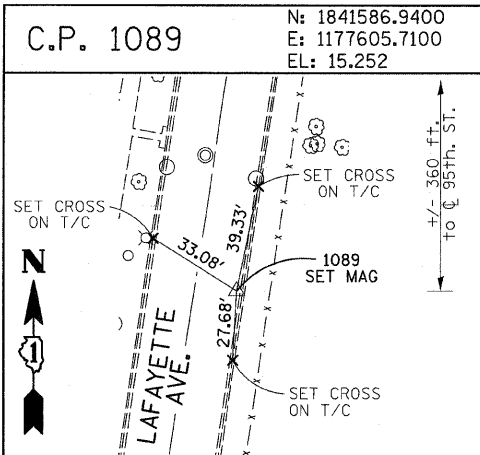


F.A.I. RTE.	SECTION	COUNTY	TOTAL SHEETS	SHEET NO.
94	1818 I-10	COOK	44	14
STA. 1346+92.86		TO STA. 1364+78.90		
FED. ROAD DIST. NO.		ILLINOIS FED. AID PROJECT		
62982				



American Surveying Consultants, P.C.
 1177 Pine St., Suite 200, Chicago, IL 60607
 312-467-2221

REVISIONS	
NAME	DATE

ILLINOIS DEPARTMENT OF TRANSPORTATION
 F.A.I. 94 (DAN RYAN EXPRESSWAY)
 SURVEY TIES FOR CONTROL POINTS
 SHEET 6 OF 7

SCALE: 1"=30'
 DATE: FEBRUARY 13, 2009
 DRAWN BY: GSP
 CHECKED BY: MMW

1/19/2009 3:52:43 PM