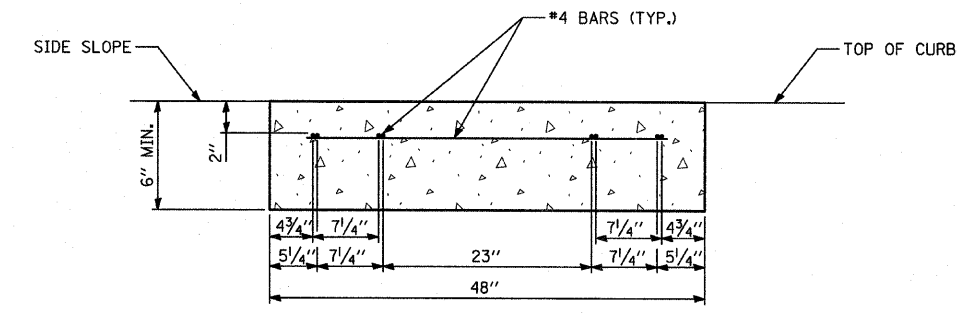
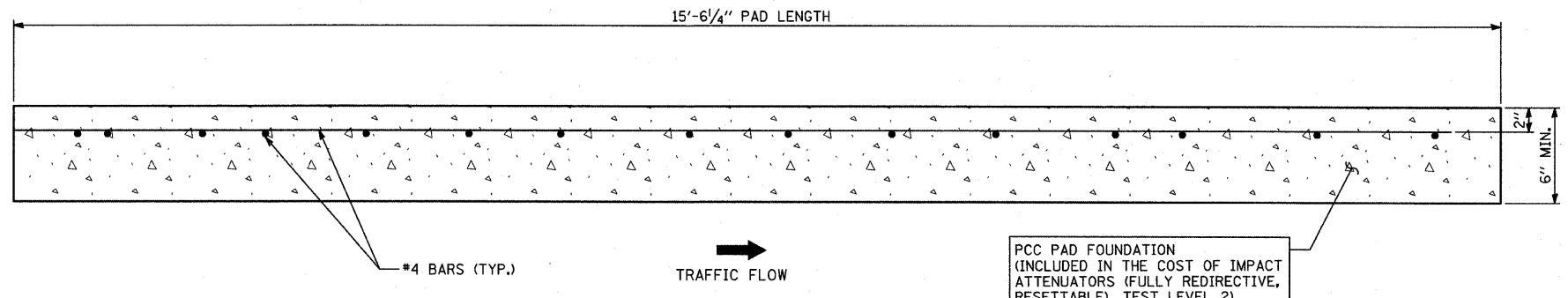


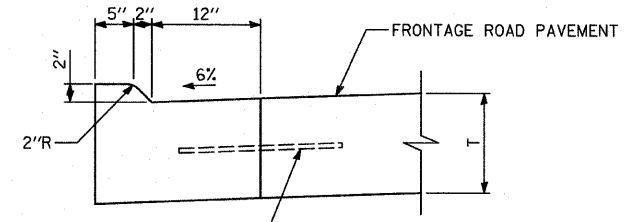
TYPICAL CONCRETE PAD PLAN VIEW



SECTION A-A



TYPICAL CONCRETE PAD ELEVATION VIEW



NO. 6 DEFORMED EPOXY COATED TIE BAR, 18" LONG @ 24" C-C DRILL & GROUT IN PLACE (INCLUDED IN THE COST OF CURB & GUTTER)

DEPRESSED COMBINATION CONCRETE CURB & GUTTER, TYPE B-V.12
ADJACENT TO IMPACT ATTENUATOR CONCRETE PAD

NOTE: CONCRETE PAD DRAWING INCLUDED FOR INFORMATIONAL PURPOSES ONLY. THE PAD FOR A SMART CUSHION INNOVATIONS 70GM SYSTEM IS DEPICTED. EXACT DIMENSIONS SHALL COMPLY WITH THE MANUFACTURER'S REQUIREMENTS FOR SPECIFIED PAY ITEM: IMPACT ATTENUATORS (FULLY REDIRECTIVE, RESETTABLE), TEST LEVEL 2

TYLIN INTERNATIONAL

REVISIONS	
NAME	DATE

ILLINOIS DEPARTMENT OF TRANSPORTATION
F.A.I. 94 (DAN RYAN EXPRESSWAY)
DETAIL OF CONCRETE PAD
FOR IMPACT ATTENUATOR (FULLY REDIRECTIVE, RESETTABLE), TEST LEVEL 2

SCALE: NONE
DATE: FEBRUARY 13, 2009

DRAWN BY: JDF
CHECKED BY: JPM

3/19/2009 3:56:33 PM