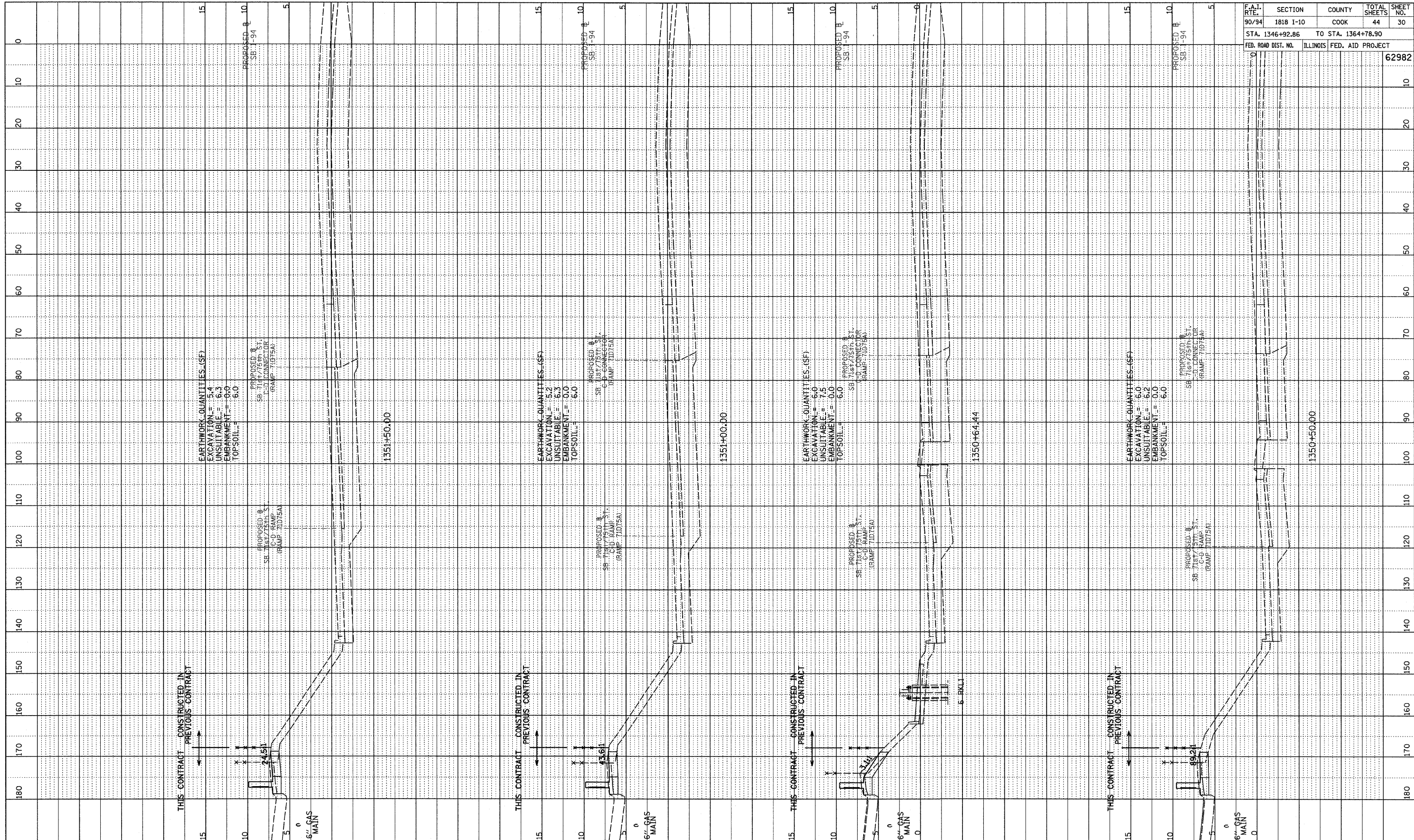
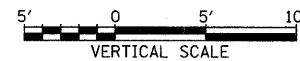
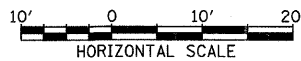


PROFILE SURVEYED BY DATE
 GRADES CHECKED
 E.M. NOTED
 NO. STRUCTURE NOTATIONS C/P/D



| F.A.I. RTE. | SECTION | COUNTY | TOTAL SHEETS | SHEET NO. |
|---------------------|-----------|---------------------------|--------------|-----------|
| 90/94 | 1818 I-10 | COOK | 44 | 30 |
| STA. 1346+92.86 | | TO STA. 1364+78.90 | | |
| FED. ROAD DIST. NO. | | ILLINOIS FED. AID PROJECT | | |
| | | | | 62982 |

TYLIN INTERNATIONAL



SB I-94 (DAN RYAN EXPRESSWAY)
 STA. 1350+50 TO STA. 1351+50

PA02373/Road/AC26/Fp426f/assn/175.dgn