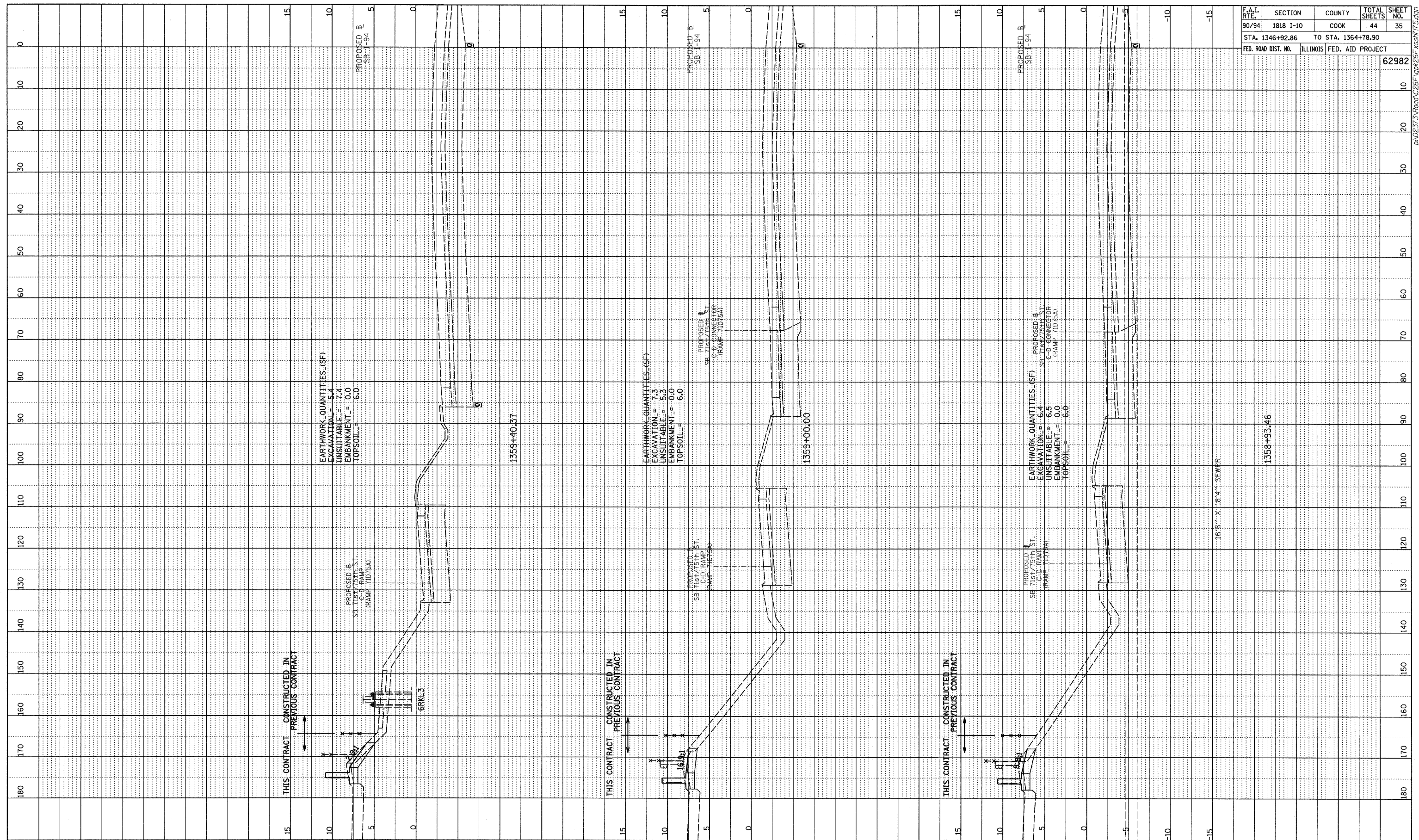
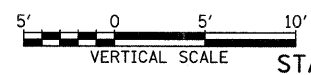
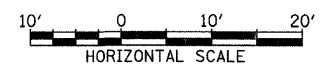


PROFILE SURVEYED BY DATE
 GRADES CHECKED
 E.M. NOTED
 NO. STRUCTURE NOTATIONS C/R/D

F.A.I. RTE.	SECTION	COUNTY	TOTAL SHEETS	SHEET NO.
90/94	1818 I-10	COOK	44	35
STA. 1346+92.86		TO STA. 1364+78.90		
FED. ROAD DIST. NO.	ILLINOIS	FED. AID PROJECT		
				62982



TYLIN INTERNATIONAL



SB I-94 (DAN RYAN EXPRESSWAY)
 STA. 1358+93.46 TO STA. 1359+40.37

P:\02313\Road\226\Fig\26\Fassh\175.dgn