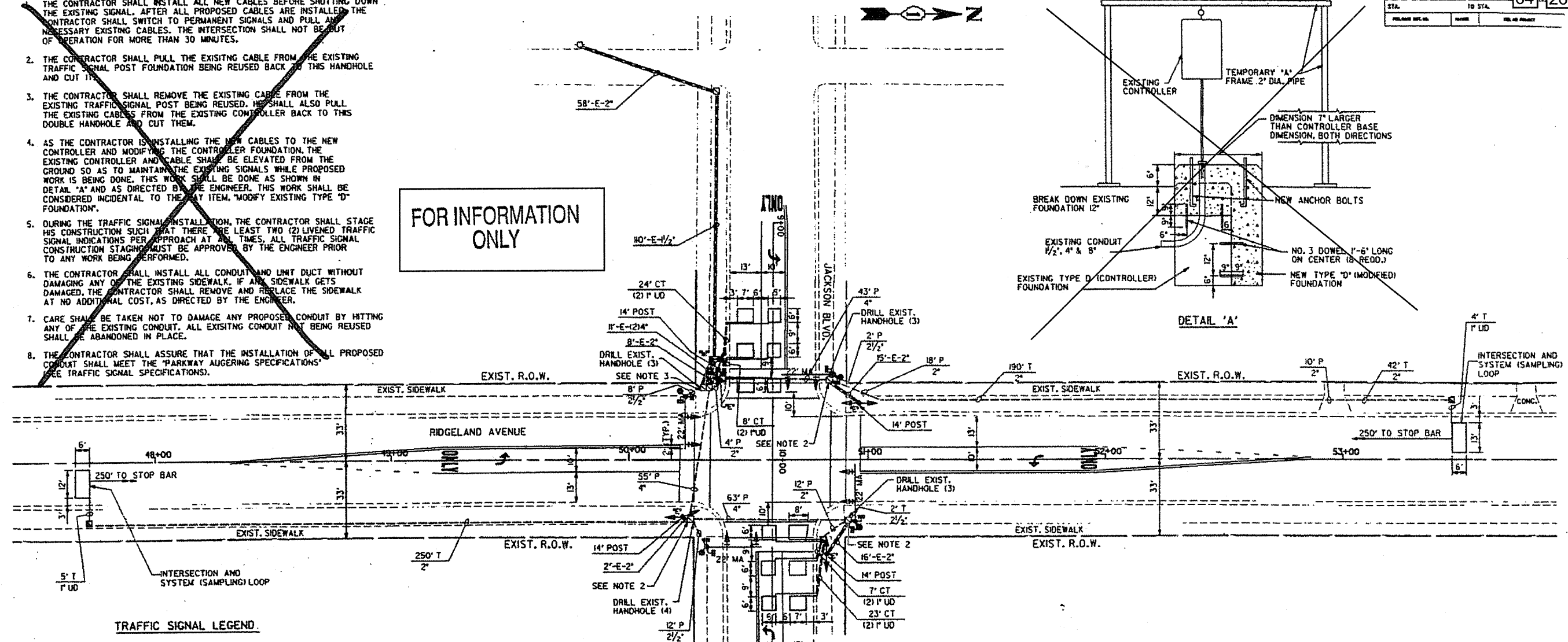
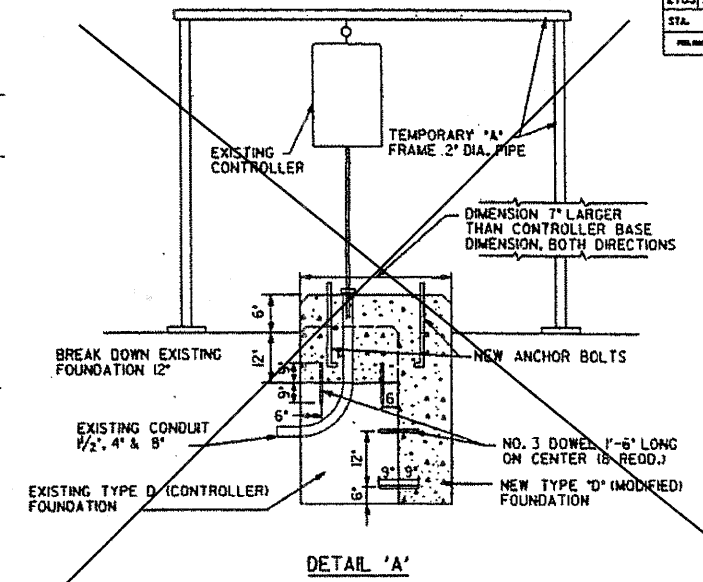


NOTES:

- THE CONTRACTOR SHALL INSTALL ALL NEW CABLES BEFORE SHUTTING DOWN THE EXISTING SIGNAL. AFTER ALL PROPOSED CABLES ARE INSTALLED, THE CONTRACTOR SHALL SWITCH TO PERMANENT SIGNALS AND PULL ANY NECESSARY EXISTING CABLES. THE INTERSECTION SHALL NOT BE OUT OF OPERATION FOR MORE THAN 30 MINUTES.
- THE CONTRACTOR SHALL PULL THE EXISTING CABLE FROM THE EXISTING TRAFFIC SIGNAL POST FOUNDATION BEING REUSED BACK TO THIS HANDHOLE AND CUT IT.
- THE CONTRACTOR SHALL REMOVE THE EXISTING CABLE FROM THE EXISTING TRAFFIC SIGNAL POST BEING REUSED. HE SHALL ALSO PULL THE EXISTING CABLES FROM THE EXISTING CONTROLLER BACK TO THIS DOUBLE HANDHOLE AND CUT THEM.
- AS THE CONTRACTOR IS INSTALLING THE NEW CABLES TO THE NEW CONTROLLER AND MODIFYING THE CONTROLLER FOUNDATION, THE EXISTING CONTROLLER AND CABLE SHALL BE ELEVATED FROM THE GROUND SO AS TO MAINTAIN THE EXISTING SIGNALS WHILE PROPOSED WORK IS BEING DONE. THIS WORK SHALL BE DONE AS SHOWN IN DETAIL 'A' AND AS DIRECTED BY THE ENGINEER. THIS WORK SHALL BE CONSIDERED INCIDENTAL TO THE PAY ITEM, 'MODIFY EXISTING TYPE 'D' FOUNDATION'.
- DURING THE TRAFFIC SIGNAL INSTALLATION, THE CONTRACTOR SHALL STAGE HIS CONSTRUCTION SUCH THAT THERE ARE AT LEAST TWO (2) LINED TRAFFIC SIGNAL INDICATIONS PER APPROACH AT ALL TIMES. ALL TRAFFIC SIGNAL CONSTRUCTION STAGING MUST BE APPROVED BY THE ENGINEER PRIOR TO ANY WORK BEING PERFORMED.
- THE CONTRACTOR SHALL INSTALL ALL CONDUIT AND UNIT DUCT WITHOUT DAMAGING ANY OF THE EXISTING SIDEWALK. IF ANY SIDEWALK GETS DAMAGED, THE CONTRACTOR SHALL REMOVE AND REPLACE THE SIDEWALK AT NO ADDITIONAL COST, AS DIRECTED BY THE ENGINEER.
- CARE SHALL BE TAKEN NOT TO DAMAGE ANY PROPOSED CONDUIT BY HITTING ANY OF THE EXISTING CONDUIT. ALL EXISTING CONDUIT NOT BEING REUSED SHALL BE ABANDONED IN PLACE.
- THE CONTRACTOR SHALL ASSURE THAT THE INSTALLATION OF ALL PROPOSED CONDUIT SHALL MEET THE 'PARKWAY AUGERING SPECIFICATIONS' (SEE TRAFFIC SIGNAL SPECIFICATIONS).

FOR INFORMATION ONLY



TRAFFIC SIGNAL LEGEND

| EXIST. | PROP. | DESCRIPTION |
|----------|----------|--|
| [Symbol] | [Symbol] | CONTROLLER ('M' INDICATES ON MODIFIED FOUNDATION) SERVICE INSTALLATION |
| [Symbol] | [Symbol] | SIGNAL HEAD |
| [Symbol] | [Symbol] | SIGNAL HEAD WITH BACKPLATE |
| [Symbol] | [Symbol] | SIGNAL HEAD, PEDESTRIAN |
| [Symbol] | [Symbol] | SIGNAL POST ('E' INDICATES ON EXISTING FOUNDATION) |
| [Symbol] | [Symbol] | MAST ARM ASSEMBLY AND POLE, STEEL |
| [Symbol] | [Symbol] | MAST ARM ASSEMBLY AND POLE, ALUMINUM |
| [Symbol] | [Symbol] | COMMON TRENCH |
| [Symbol] | [Symbol] | UNIT DUCT |
| [Symbol] | [Symbol] | HANDHOLE |
| [Symbol] | [Symbol] | DOUBLE HANDHOLE |
| [Symbol] | [Symbol] | HEAVY DUTY HANDHOLE |
| [Symbol] | [Symbol] | G.S. CONDUIT IN TRENCH OR PUSHED |
| [Symbol] | [Symbol] | PEDESTRIAN PUSH-BUTTON DETECTOR |
| [Symbol] | [Symbol] | DETECTOR LOOP |
| [Symbol] | [Symbol] | EMERGENCY VEHICLE SYSTEM DETECTOR |
| [Symbol] | [Symbol] | CONFIRMATION BEACON |
| [Symbol] | [Symbol] | SIGNAL HEAD OPTICALLY PROGRAMMED |

RESTORATION OF WORK AREA

RESTORATION OF THE TRAFFIC SIGNAL WORK AREAS SHALL BE INCIDENTAL TO THE RELATED PAY ITEM SUCH AS FOUNDATION, CONDUIT, HANDHOLE, TRENCH AND BACKFILL, ETC., AND NO EXTRA COMPENSATION SHALL BE ALLOWED. ALL ROADWAY SURFACES SUCH AS SHOULDERS, MEDIANS, SIDEWALKS, PAVEMENT, ETC. SHALL BE REPLACED IN KIND. ALL DAMAGE TO MOWED LAWNS SHALL BE REPLACED WITH AN APPROVED SOD, AND ALL DAMAGE TO UNMOWED FIELDS SHALL BE SEEDING IN ACCORDANCE WITH STANDARD SPECIFICATIONS 252 AND 250 RESPECTIVELY.

FOR INFORMATION ONLY

| REVISIONS | |
|-----------|------|
| NAME | DATE |
| | |
| | |
| | |
| | |

K&E KAM ENGINEERING, INC.
CONSULTING ENGINEERS
707A Davis Road, Suite 205
Evanston, Illinois 60123-1369

ILLINOIS DEPARTMENT OF TRANSPORTATION
RIDGELAND AVE. @ JACKSON BLVD.
TRAFFIC SIGNAL MODIFICATION
SCALE: 1"=20'
DATE: 09-04-98
DRAWN BY: CSL
CHECKED BY: WSA

F:\ADGN\JOB97-2\JACKSIG.DGN

63112