

FOR INDEX OF SHEETS, SEE SHEET NO.2

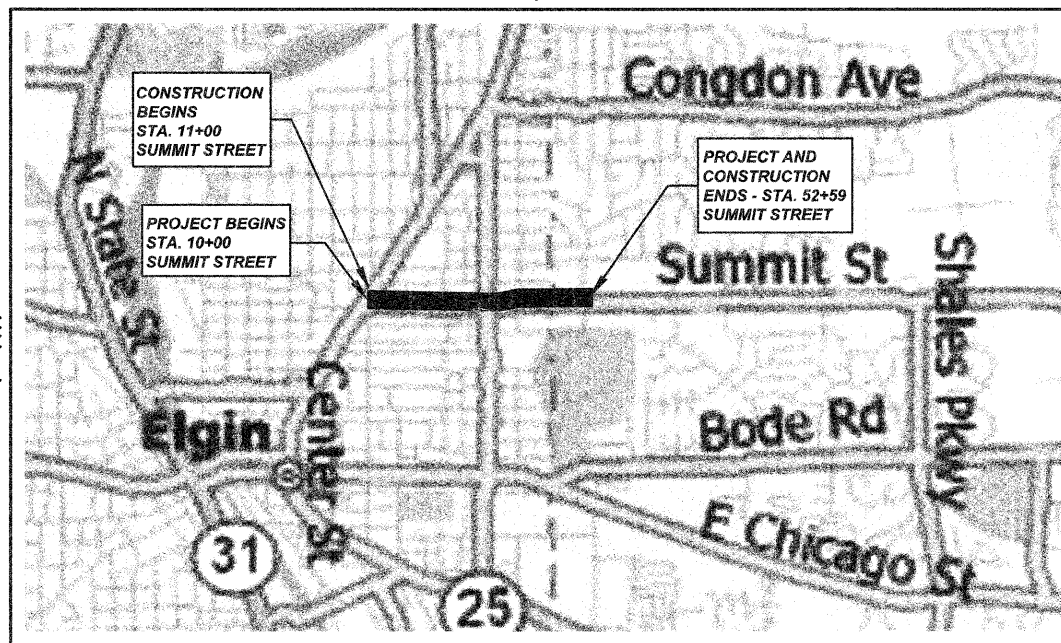
STATE OF ILLINOIS
DEPARTMENT OF TRANSPORTATION
DIVISION OF HIGHWAYS
PLANS FOR PROPOSED
FEDERAL AID PROJECT
RESURFACING
SUMMIT STREET - FAU ROUTE 1320
PROJECT NO. ARA-9003(225)
SECTION NO. 08-00174-00-RS
FROM DUNDEE AVENUE (FAU 2527)
TO 200' EAST OF HIAWATHA DRIVE
CITY OF ELGIN
KANE/COOK COUNTY
JOB NO. C-91-283-09

F.A.U. RTE.	SECTION	COUNTY	TOTAL SHEETS	SHEET NO.
1320	08-00174-00-RS	KANE/COOK	19	1
FED. ROAD DIST. NO.	ILLINOIS	FED. AID PROJECT - LAPP		
CONTRACT NO. 63150				



DESIGN DESIGNATION	
Summit Street:	MAJOR ARTERIAL DESIGN SPEED = 35 M.P.H. POSTED SPEED = 35 M.P.H. ADT(2006) = 18,300 (AT LIBERTY ST.)

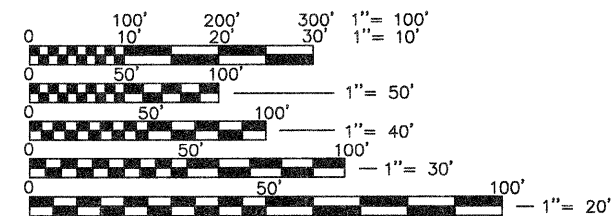
R-8E, R-9E



SW 1/4 AND SE 1/4 SEC. 12, T-41N, R-8E, AND W 1/2 SW 1/4 SEC. 7, T-41N, R-9E

LOCATION MAP
 N.T.S.

NET LENGTH OF PROJECT = 4,159 FEET (0.79 MILES)
 GROSS LENGTH OF PROJECT = 4,259 FEET (0.81 MILES)



FULL SIZE PLANS HAVE BEEN PREPARED USING STANDARD ENGINEERING SCALES, REDUCED SIZED PLANS WILL NOT CONFORM TO STANDARD SCALES, IN MAKING MEASUREMENTS ON REDUCED PLANS, THE ABOVE SCALES MAY BE USED.

J.U.L.I.E.
JOINT UTILITY LOCATION INFORMATION FOR EXCAVATION
DIAL 811 OR 1-800-892-0123

CONTRACT 63150

TOPOGRAPHICAL INFORMATION FROM SURVEY BY ENGINEERING ENTERPRISES, INC.

PRINTED BY THE AUTHORITY OF THE STATE OF ILLINOIS

CONSULTING ENGINEER: ENGINEERING ENTERPRISES, INC.
 CONTACT: SEAN W. MIKOS (847)-683-3100

STATE OF ILLINOIS DEPARTMENT OF TRANSPORTATION DIVISION OF HIGHWAYS	
APPROVED	March 31, 2009 <i>Joseph P. ...</i> LOCAL AGENCY, POSITION
PASSED	APRIL 06, 2009 <i>C. Helt</i> DISTRICT 1 ENGINEER OF LOCAL ROADS & STREETS
RELEASING FOR BID BASED ON LIMITED REVIEW	APRIL 06, 2009 <i>Diana M. O'Keefe</i> DEPUTY DIRECTOR OF HIGHWAYS, REGION 1 ENGINEER

DATE: 3/31/09

BY: *Jason M. Bauer*
JASON M. BAUER

LICENSE EXPIRES: NOVEMBER 30, 2009

SEAL

Engineering Enterprises, Inc.
CONSULTING ENGINEERS
52 Wheeler Road
Sugar Grove, Illinois 60554
P: 630.466.6700 - W: www.eiweb.com

FIELD ENGINEER: MARLIN SOLOMON (847) 705-4407

Plotted: March 20, 2009 @ 11:00 AM By: Jim Gales - Tab: 01 Cover - 22x34
 CONSULTING ENGINEER: ENGINEERING ENTERPRISES, INC.
 CONTACT: SEAN W. MIKOS (847)-683-3100
 COPYRIGHT © 2009 ENGINEERING ENTERPRISES, INC.

P:\11\1103\PROJ\EGAR\10\DWG\DWG_FINAL_ENG\EG0810-CVR