

Contract 83908

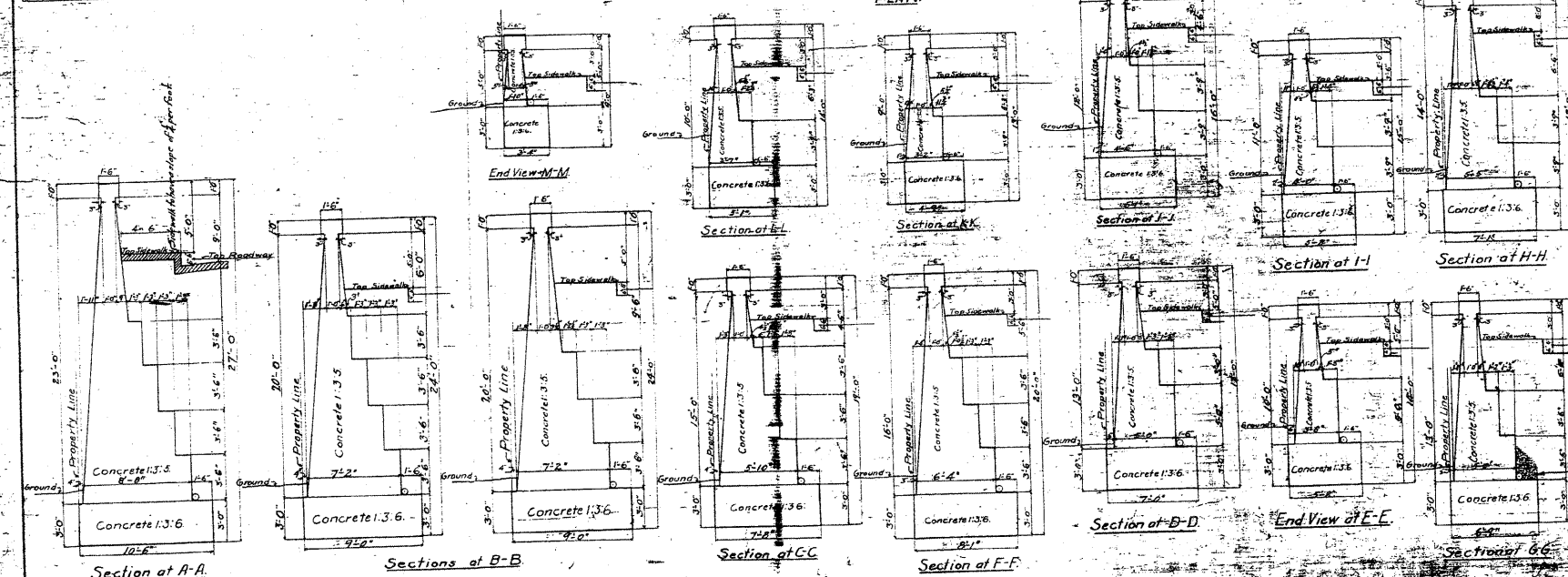
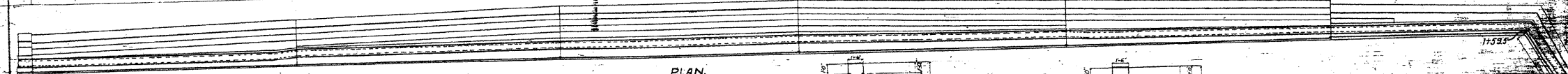
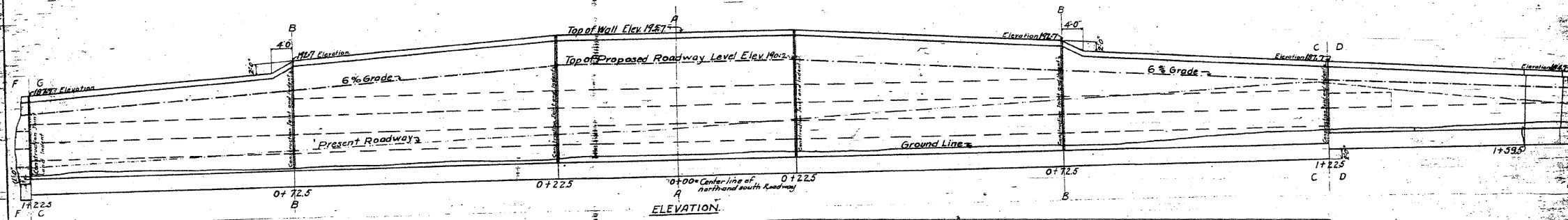
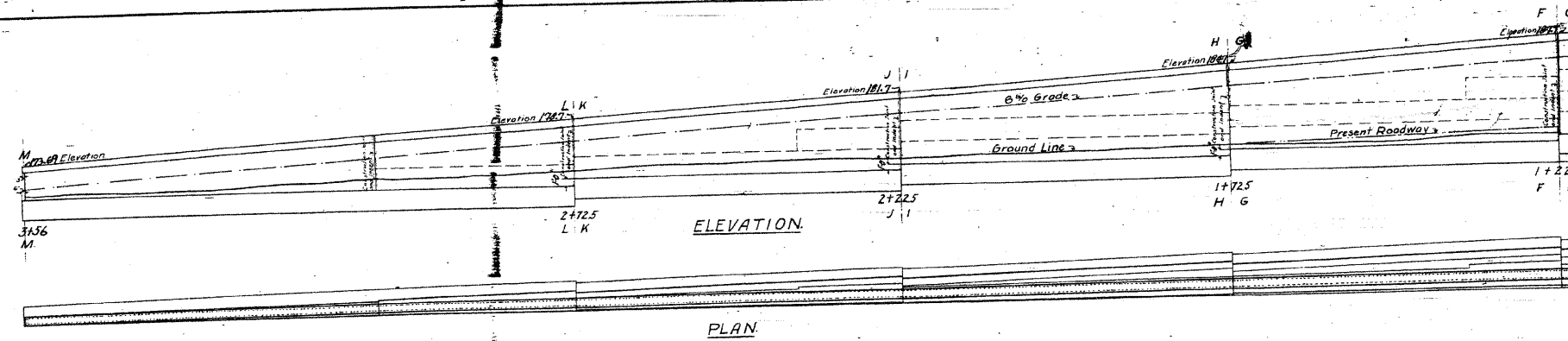
Sheet 241a.

Existing Retaining Wall

Section 97-00084-60-BR

City of Wheaton

△ Added
7-15-09



For plan of wall as actually built see File No. 442-72.

Quantities of Concrete
 10.65 Cubic Yards 1:3:5 Composition
 4.35 " 1:3:6
 1500 Total

Note:
 For General Plan, see File No. 442-72.
 Maximum Soil Pressure 5300 per sq ft
 Average 2200
 Bottom of footing to be not less than 3 feet below surface of ground at all points.

C&N-W. RY.
 Galena Division
 Bridge No. 4
 Wesley St. Crossing Wheaton, Ill.
 RETAINING WALL
 Along south side of Manchester Road.
 Office of Engineer of Bridges
 Chicago, Ill. Oct. 25, 1916.
 H.L.D.