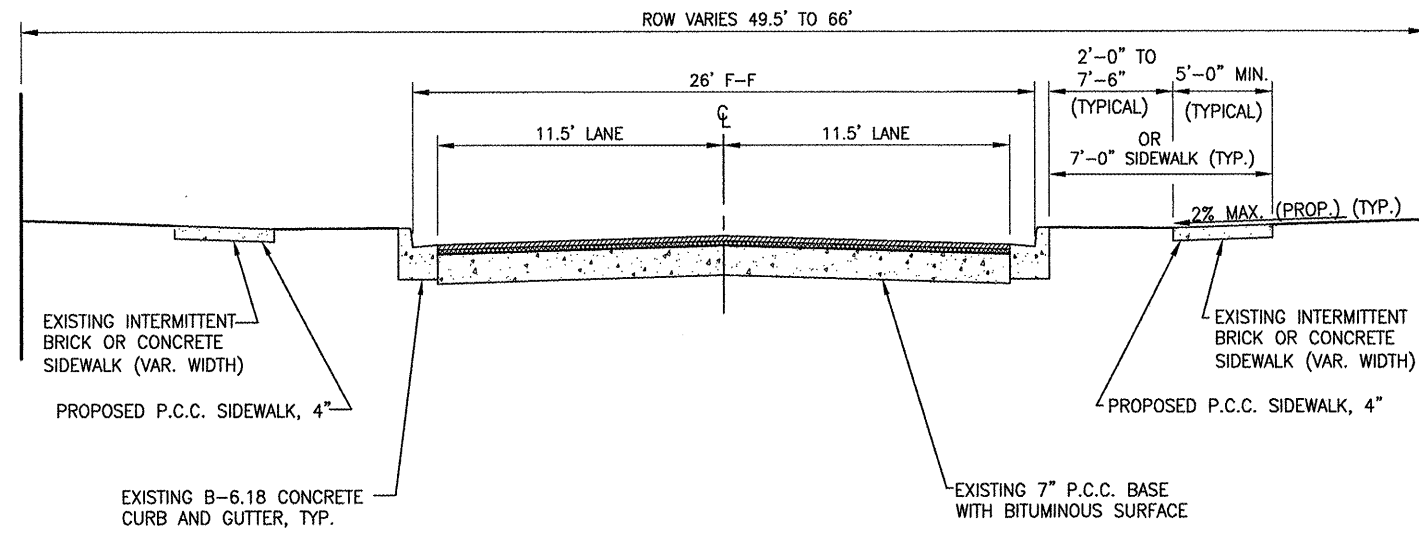
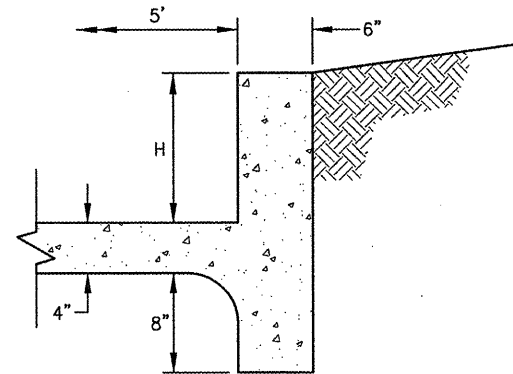


F.A.U. RTE.	SECTION	COUNTY	TOTAL SHEETS	SHEET NO.
*	09-00093-00-SW	FULTON	6	2
* FAU 6883			CONTRACT NO. 89530	



TYPICAL SECTION
ASH STREET
STA. 21+76 TO STA. 44+54



SIDEWALK WALL
MEASUREMENT FORMULA: IN SIDEWALK WALL AREA P.C.C. SIDEWALK 4\"/>

COMMITMENTS

THE CITY OF CANTON HAS COMMITTED TO BUILD THE PROPOSED SIDEWALKS IN ACCORDANCE WITH ADA REQUIREMENTS.

PROJECT SPECIFIC NOTES

THE CONTRACTOR SHALL NOTIFY THE RESIDENT ENGINEER FORTY-EIGHT (48) HOURS PRIOR TO PERFORMING WORK.

NO MATERIAL OR EQUIPMENT SHOULD BE LEFT ON OR NEAR THE ROADWAY DURING NON-WORKING HOURS.

ANY NECESSARY TRAFFIC CONTROL WILL BE PROVIDED BY THE CONTRACTOR. APPROPRIATE STANDARDS ARE HEREWITH ATTACHED.

A FLAGGER WILL BE REQUIRED AT ALL TIMES WHEN WORKERS OR EQUIPMENT ARE ENCRDACHING WITHIN 24\"/>

WHEN NO WORK IS BEING PERFORMED, THE FLAGGERS WILL NOT BE REQUIRED. IF THE FLAGGERS ARE NOT PRESENT, THE FLAGGER SIGNS SHALL BE REMOVED OR COVERED.

FLAGGERS SHALL BE PRESENT DURING ALL CLOSURE HOURS INCLUDING LUNCH HOUR AND NO ADDITIONAL COMPENSATION WILL BE ALLOWED.

MAURER & STUTZ, INC. ENGINEERS SURVEYORS
1670 EAST ASH STREET
CANTON, ILLINOIS 61520
PH. (309) 647-7831
FAX (309) 647-6165

TYPICAL SECTION, GENERAL NOTES, COMMITMENTS & DETAILS

FOR: CITY OF CANTON, ILLINOIS		
REVISIONS	DATE <i>04/30/09</i>	PROJECT NO. <i>247-09001</i>
	DESIGNED <i>GBM</i>	DRAWING NO.
	CHECKED <i>-</i>	
	DRAWN <i>NDP</i>	
FIELD BK.	CHECKED <i>GBM</i>	SHEET <i>2</i> OF <i>6</i>