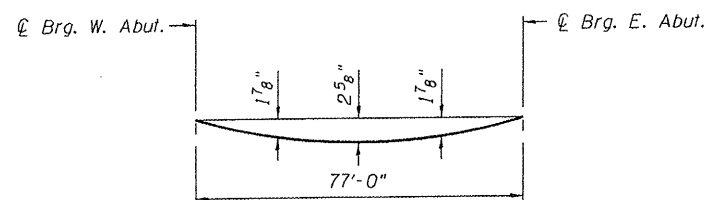


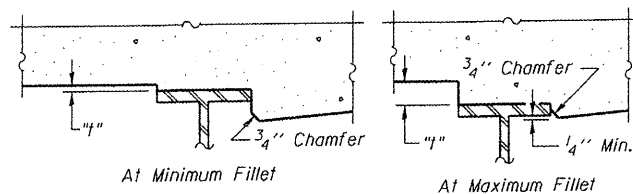
STATE OF ILLINOIS
DEPARTMENT OF TRANSPORTATION



DEAD LOAD DEFLECTION DIAGRAM

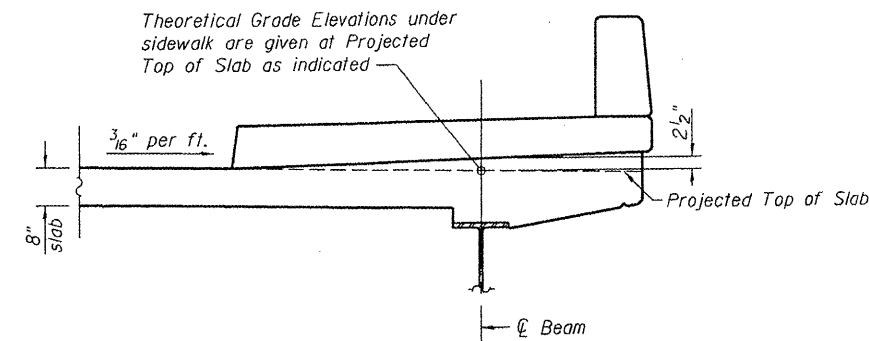
(Includes weight of concrete only.)

Note:
The above deflections are not to be used in the field if the engineer is working from the "Theoretical Grade Elevations Adjusted for Dead Load Deflection" as shown on sheet 4 of 31.

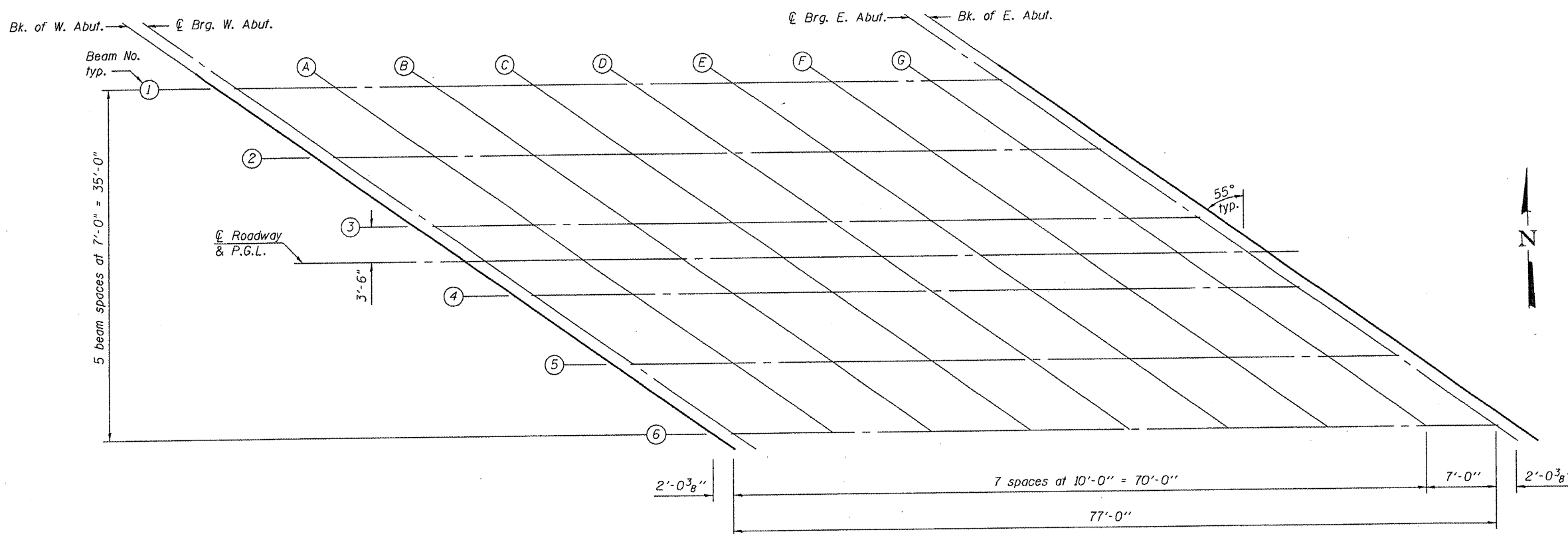


To determine "f": After all structural steel has been erected, elevations of the top flanges of the beams shall be taken at intervals shown below. These elevations subtracted from the "Theoretical Grade Elevations Adjusted for Dead Load Deflection" shown on sheet 4 of 31, minus slab thickness, equals the fillet heights "f" above top flange of beams.

FILLET HEIGHTS




**TOP OF SLAB ELEVATIONS
UNDER SIDEWALK**



PLAN

**TOP OF SLAB ELEVATIONS
STRUCTURE NO. 082-6113**

SHEET NO. 3 31 SHEETS	F.A.U. RTE.	SECTION	COUNTY	TOTAL SHEETS	SHEET NO.
	9274	04-00202-00-BR	ST. CLAIR	55	20
CONTRACT NO. 97369					
FED. ROAD DIST. NO. 7 ILLINOIS FED. AID PROJECT					
 DATES ASSOCIATES Consulting Engineers	Eastport Business Center 1 100 Lanter Court, Suite 1 Collinsville, Illinois 62234 618-345-2200 Design Firm License No. 184.001115			DESIGNED NEL	
				CHECKED JAD	
				DRAWN NEL	
				CHECKED JAD	