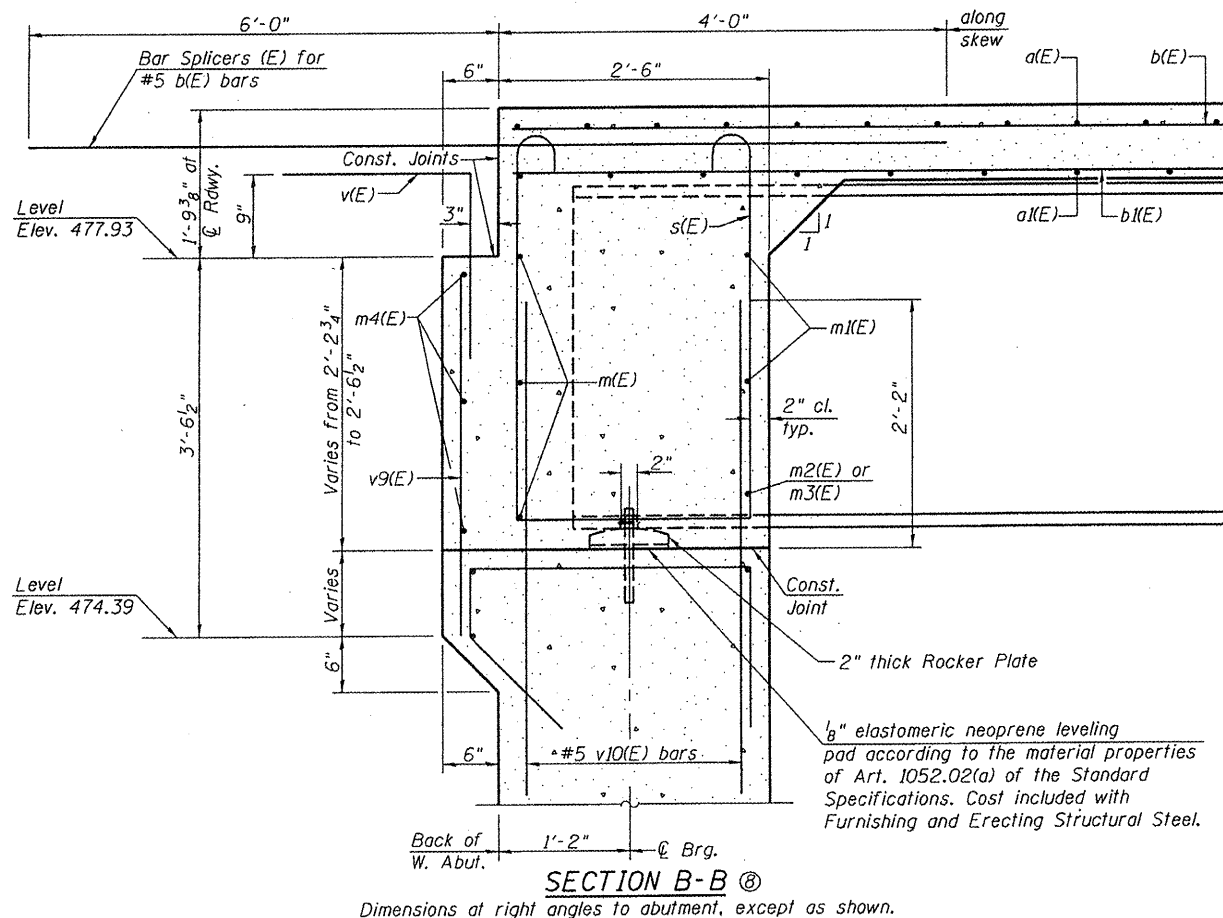
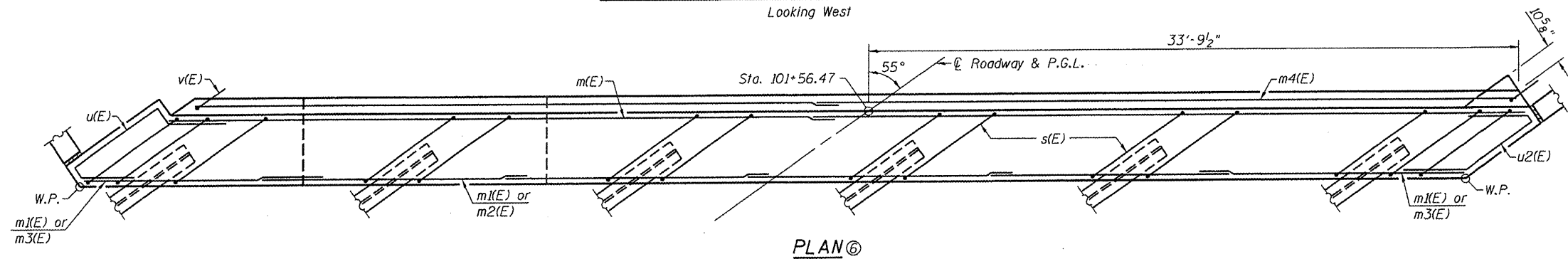
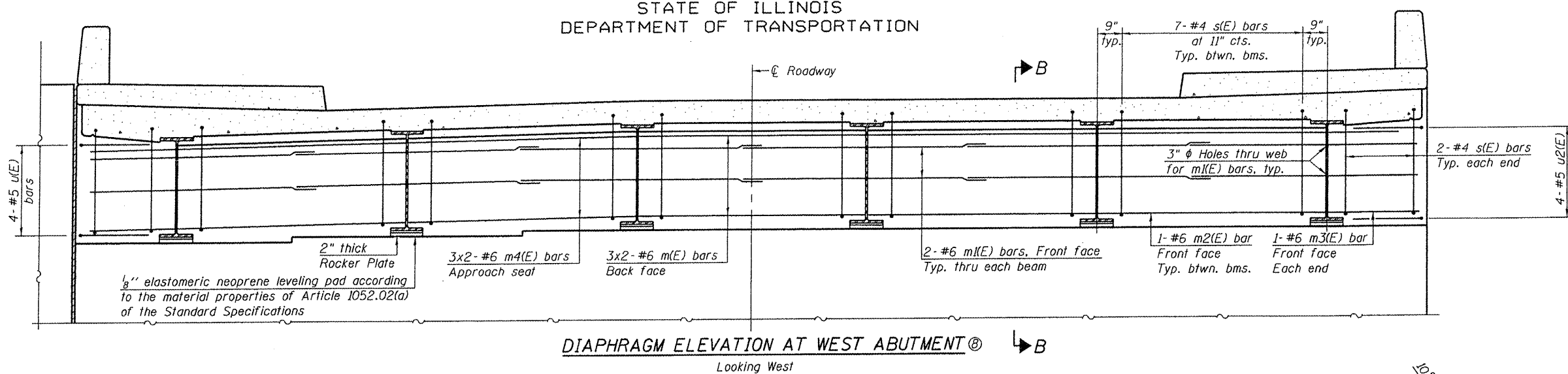



STATE OF ILLINOIS
DEPARTMENT OF TRANSPORTATION



MIN. BAR LAP
#6 bar = 2'-9"

- Notes:
- ① Reinforcement bars in diaphragm are billed with superstructure on sheet 9 of 31.
 - ② Concrete in diaphragm is included with Concrete Superstructure on sheet 9 of 31.
 - ③ For details of bars s(E) & v(E), see sheet 9 of 31.
 - ④ For bar v(E) callouts, see sheet 7 of 31.
 - ⑤ The s(E) bars shall be placed parallel to the beams. Spacing for these bars shall be at right angles to the beams.
 - ⑥ For dimensions not shown see Seat Plan on sheet 19 of 31.
 - ⑦ Bars indicated thus 3 x 2 - #6 etc. indicates 3 lines of bars with 2 lengths per line.
 - ⑧ Steel End Diaphragm D1 not shown. See sheet 16 of 31 for additional details.

DIAPHRAGM DETAILS
STRUCTURE NO. 082-6113

| | | | | | |
|--|---|----------------|-----------|--------------|--------------|
| SHEET NO. 10 | F.A.U. RTE. | SECTION | COUNTY | TOTAL SHEETS | SHEET NO. |
| | 9274 | 04-00202-00-BR | ST. CLAIR | 55 | 27 |
| 31 SHEETS | CONTRACT NO. 97369 | | | | |
| FED. ROAD DIST. NO. 7 ILLINOIS FED. AID PROJECT | | | | | |
|  OATES ASSOCIATES Consulting Engineers | Eastport Business Center 1 100 Lanter Court, Suite 1 Collinsville, Illinois 62234 618-345-2200 Design Firm License No. 184.001115 | | | | DESIGNED NEL |
| | | | | | CHECKED JAD |
| | | | | | DRAWN NEL |
| | | | | | CHECKED JAD |