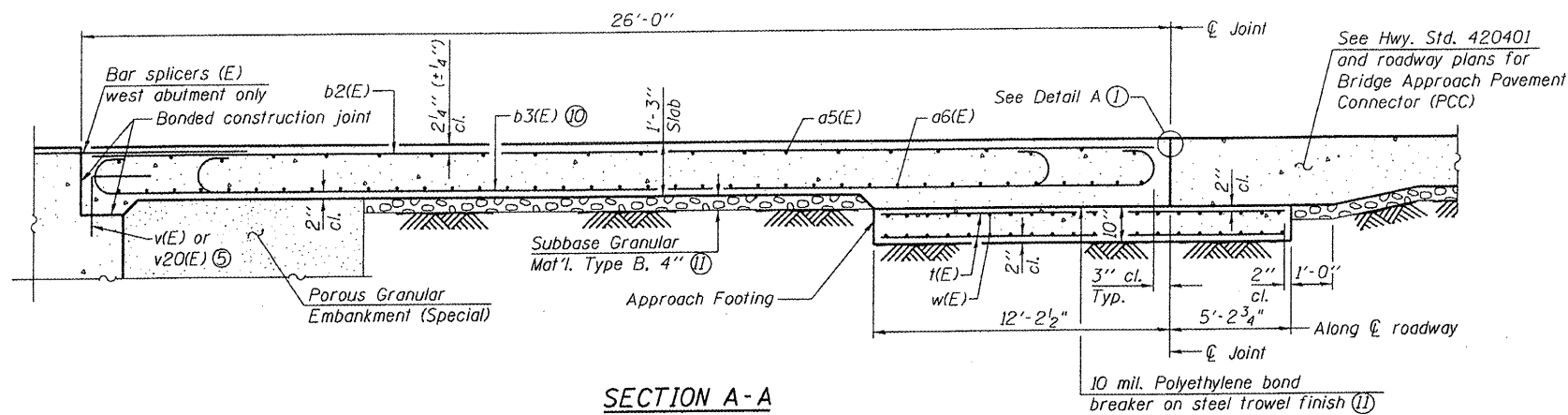


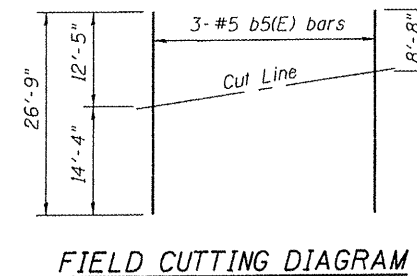
STATE OF ILLINOIS  
DEPARTMENT OF TRANSPORTATION

TWO APPROACHES  
BILL OF MATERIAL

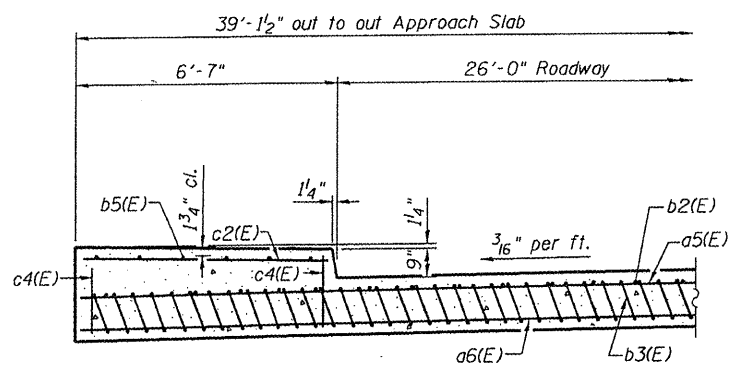
Bar	No.	Size	Length	Shape
a5(E)	88	#4	34'-8"	
a6(E)	160	#5	34'-11"	
b2(E)	80	#4	25'-6"	
b3(E)	186	#9	25'-9"	
b4(E)	7	#5	25'-6"	
b5(E)	3	#5	26'-9"	
b6(E)	14	#5	27'-2"	
c(E)	85	#5	2'-5"	
c2(E)	98	#5	6'-1"	
c3(E)	85	#5	3'-0"	
c4(E)	23	#4	1'-4"	
1(E)	160	#4	16'-10"	
w(E)	160	#5	34'-11"	
Concrete Structures			Cu. Yd.	42.2
Concrete Superstructure			Cu. Yd.	137.3
Reinforcement Bars, Epoxy Coated			Pound	34,930



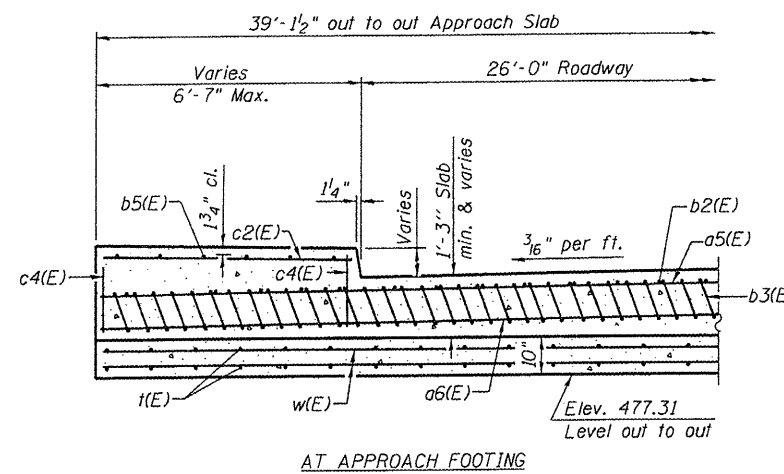
SECTION A-A



FIELD CUTTING DIAGRAM (12)

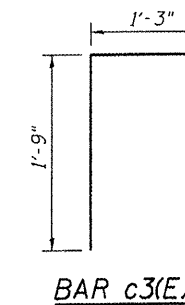


NEAR ABUTMENT

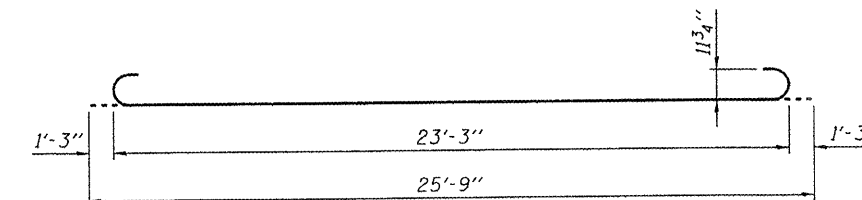


AT APPROACH FOOTING

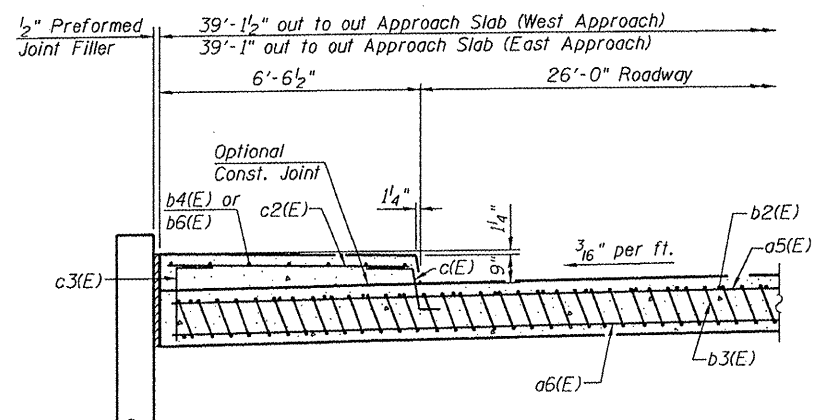
SECTION B-B



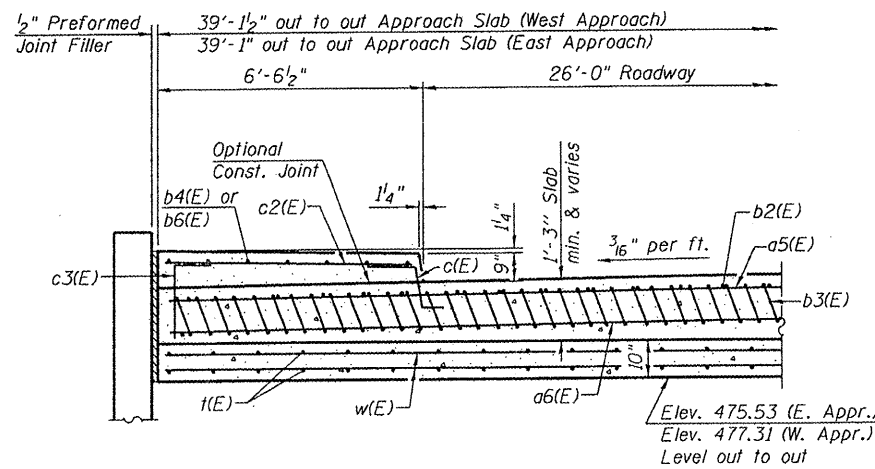
BAR c3(E)



BAR b3(E)



NEAR ABUTMENT



AT APPROACH FOOTING

SECTION C-C

- Notes:
- For Detail A, see sheet 11 of 31.
  - Approach slab and sidewalk concrete shall be paid for as Concrete Superstructure.
  - Approach footing concrete shall be paid for as Concrete Structures.
  - Reinforcement shall be paid for as Reinforcement Bars, Epoxy Coated.
  - For bar v(E) and c(E) details, see sheet 9 of 31. For bar v20(E) details, see sheet 21 of 31.
  - The approach footing maximum applied service bearing pressure (Omax) = 2.0 ksf.
  - For bar splicer details, see sheet 29 of 31.
  - Cost of excavation for approach footing included with Concrete Structures.
  - For Porous Granular Embankment (Special) and drainage treatment details, see sheets 19 of 31 and 21 of 31.
  - Tilt #9 b3(E) bars as required to maintain clearance.
  - Cost included with Concrete Superstructure.
  - Order b5(E) full length. Cut as shown and use remainder of bars in opposite side of sidewalk.

BRIDGE APPROACH SLAB DETAILS  
STRUCTURE NO. 082-6113

SHEET NO. 12 31 SHEETS	F.A.U. RTE. 9274	SECTION 04-00202-00-BR	COUNTY ST. CLAIR	TOTAL SHEETS 55	SHEET NO. 29
	CONTRACT NO. 97369				
FED. ROAD DIST. NO. 7 ILLINOIS FED. AID PROJECT					
 GATES ASSOCIATES Consulting Engineers	Eastport Business Center 1 100 Lanter Court, Suite 1 Collinsville, Illinois 62234 618-345-2200 Design Firm License No. 184.001115			DESIGNED NEL CHECKED JAD DRAWN NEL CHECKED JAD	