

STATE OF ILLINOIS
DEPARTMENT OF TRANSPORTATION

F.A.P. RTE.	SECTION	COUNTY	TOTAL SHEETS	SHEET NO.
324	(27R&28R)CJS	DEKALB	8	1
		ILLINOIS	CONTRACT NO. 66L06	

INDEX OF SHEETS

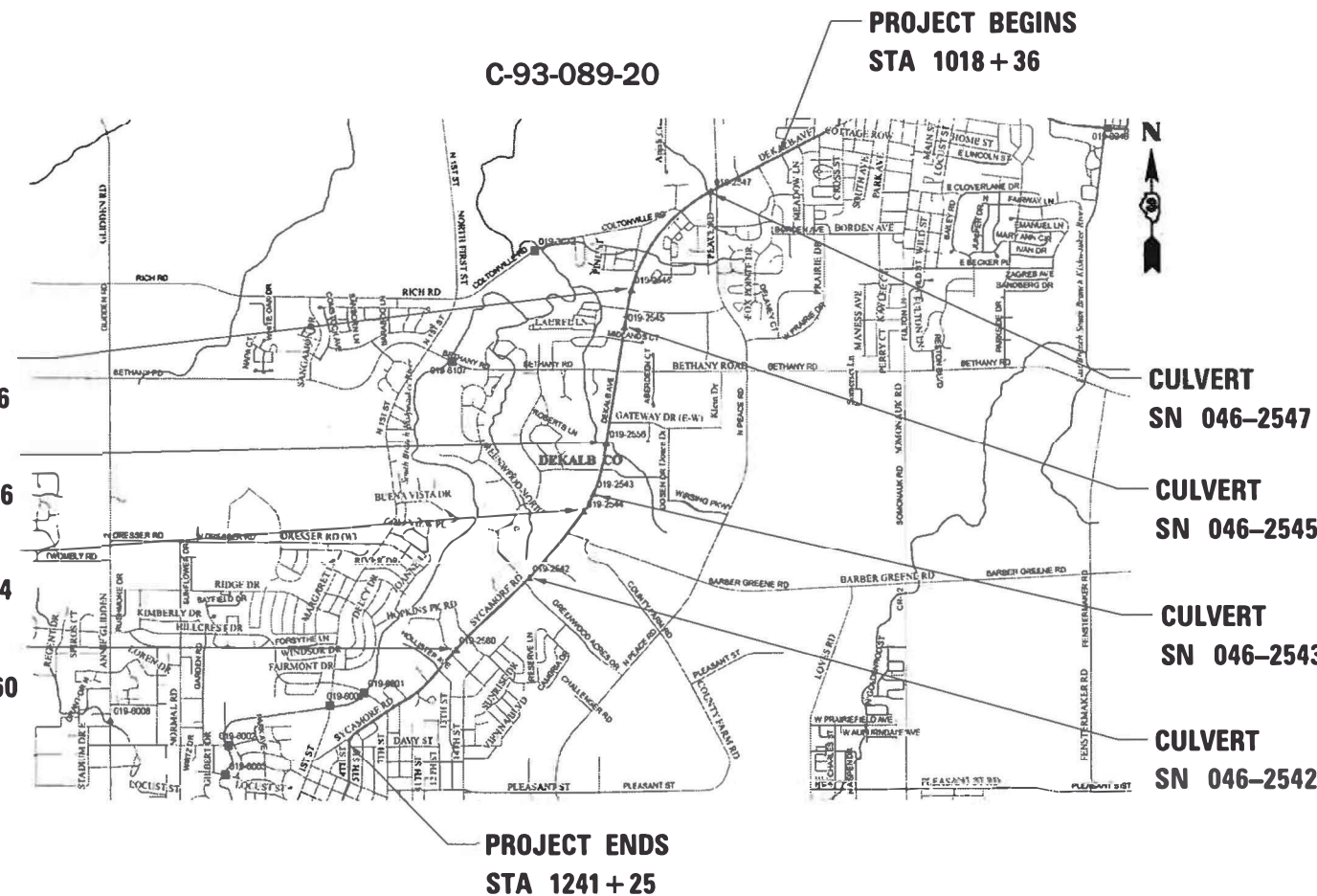
- 1 COVER SHEET
- 2 GENERAL NOTES
- 3 SUMMARY OF QUANTITIES
- 4-5 TYPICAL SECTIONS
- 6 LINE DIAGRAM
- 7 SCHEDULES
- 8 DETAILS

LIST OF ILLINOIS DOT HIGHWAY STANDARDS

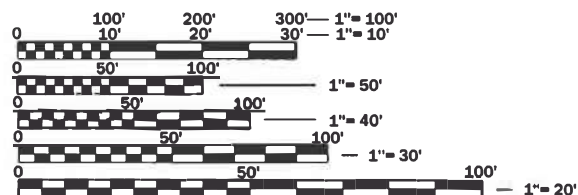
000001-07	STANDARD SYMBOLS, ABBREVIATIONS AND PATTERNS
001006	DECIMAL OF AN INCH AND OF A FOOT
701101-05	OFF-ROAD OPERATIONS, MULTILANE, 15' (4.5 m) TO 24' (600 mm) FROM PAVEMENT EDGE
701426-09	LANE CLOSURE, MULTILANE INTERMITTENT OR MOVING OPERATION, FOR SPEEDS ≥ 45 MPH
701427-05	LANE CLOSURE, MULTILANE INTERMITTENT OR MOVING OPERATION, FOR SPEEDS ≤ 40 MPH
701601-09	URBAN LANE CLOSURE, MULTILANE, 1W OR 2W WITH NONTRAVERSABLE MEDIAN
701602-10	URBAN LANE CLOSURE, MULTILANE, 2W WITH BIDIRECTIONAL LEFT TURN LANE
701701-10	URBAN LANE CLOSURE, MULTILANE INTERSECTION
701901-08	TRAFFIC CONTROL DEVICES

PROPOSED HIGHWAY PLANS

FAP ROUTE 324 (IL 23)
SECTION (27R&28R)CJS
PROJECT NHPP-JZMH(809)
CRACK & JOINT SEALING
DEKALB COUNTY



FUNCTIONAL CLASSIFICATION
OTHER ARTERIAL
2019 ADT=20,000
PV=95.5% SU=2.4% MU=2.1%



FULL SIZE PLANS HAVE BEEN PREPARED USING STANDARD ENGINEERING SCALES. REDUCED SIZED PLANS WILL NOT CONFORM TO STANDARD SCALES. IN MAKING MEASUREMENTS ON REDUCED PLANS, THE ABOVE SCALES MAY BE USED.

J.U.L.I.E.
JOINT UTILITY LOCATION INFORMATION FOR EXCAVATION
1-800-892-0123
OR 811

PROJECT ENGINEER: JACOB OYIER, PE
UNIT CHIEF: ARLENE OTERO-FEBUS
DISTRICT 3 NO. (815) 434-6131
CONTRACT NO. 66L06

GROSS LENGTH = 22123 FT. = 4.19 MILE
NET LENGTH = 22123 FT. = 4.19 MILE

STATE OF ILLINOIS
DEPARTMENT OF TRANSPORTATION

SUBMITTED May 5th 2020
[Signature]
REGIONAL ENGINEER

June 26, 2020
[Signature]
ENGINEER OF DESIGN AND ENVIRONMENT

June 26, 2020
[Signature]
DIRECTOR OF HIGHWAYS PROJECT IMPLEMENTATION

PRINTED BY THE AUTHORITY
OF THE STATE OF ILLINOIS

GENERAL NOTES

THE INTENT OF THIS PROJECT IS TO ROUT AND SEAL WORKING TRANSVERSE CRACKS AND PRIMARY LONGITUDINAL CRACKS GREATER THAN 1/4" IN WIDTH. SECONDARY CRACKS GREATER THAN 1/4" IN WIDTH SHALL BE CLEANED AND SEALED.

THE CONTRACTOR SHALL NOT DISTURB THE EXISTING PAVEMENT MARKING OR RAISED REFLECTIVE PAVEMENT MARKERS. THE CONTRACTOR SHALL REPLACE, AT NO ADDITIONAL COST TO THE DEPARTMENT, ANY PAVEMENT MARKING OR RAISED REFLECTIVE PAVEMENT MARKERS DAMAGED BY HIS OPERATION.

THE ENGINEER SHALL DETERMINE WHETHER SECTIONS OF CRACKS SEALING SHOULD BE OMITTED IN ORDER TO AVOID DAMAGING THE PAVEMENT MARKING IN THOSE AREAS.

PLAN DIMENSIONS AND DETAIL RELATIVE TO THE EXISTING PLANS ARE SUBJECT TO ROUTINE VARIATIONS. THE CONTRACTOR SHALL FIELD VERIFY EXISTING DIMENSIONS AND DETAILS AFFECTING NEW CONSTRUCTION OF ORDERING OF MATERIALS, SUCH VARIATIONS SHALL NOT BE CAUSE FOR ADDITIONAL COMPENSATION FOR A CHANGE IN THE SCOPE OF THE WORK. HOWEVER, THE CONTRACTOR WILL BE PAID FOR THE QUANTITY FURNISHED BASED UPON THE UNIT BID PRICE.

ALL PCC BRIDGE DECKS AND PAVEMENT SHALL BE OMITTED. BRIDGE DECKS WITH HMA OVERLAYS ARE TO BE SEALED ONLY (NO ROUTING).

THE FOLLOWING RATES OF APPLICATION HAVE BEEN USED IN CALCULATING PLAN QUANTITIES:

CRACK FILLING	0.35	POUND/FOOT
---------------	------	------------

COMMITMENTS

STATE OF ILLINOIS
DEPARTMENT OF TRANSPORTATION
DISTRICT THREE
AS BUILT INFORMATION

SUPERVISING CONSTRUCTION FIELD ENGINEER

RESIDENT ENGINEER / TECHNICIAN

START & END DATES
OF CONSTRUCTION:

INSPECTORS:

STATE OF ILLINOIS
DEPARTMENT OF TRANSPORTATION
DISTRICT THREE

PREPARED BY: _____
DISTRICT STUDIES & PLANS ENGINEER

DATE: _____

EXAMINED BY: _____
DISTRICT CONSTRUCTION ENGINEER

DISTRICT MATERIALS ENGINEER

DISTRICT OPERATIONS ENGINEER

**STATE OF ILLINOIS
DEPARTMENT OF TRANSPORTATION**

GENERAL NOTES

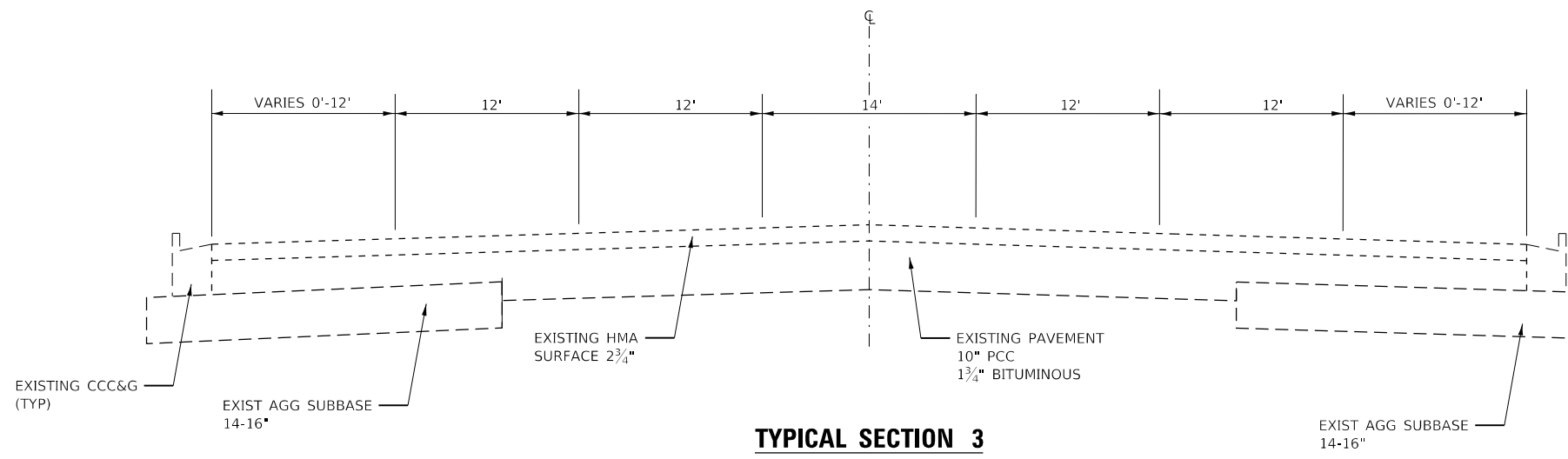
SCALE: SHEET 1 OF 1 SHEETS STA. TO STA.

F.A.P. RTE.	SECTION	COUNTY	TOTAL SHEETS	SHEET NO.
324	(27R&28R)CJS	DEKALB	8	2
ILLINOIS FED. AID PROJECT			CONTRACT NO. 66L06	

MODEL Default
 FILE Name: P:\pub\lancom.dat Illinois\pwr\WIDOT\Documents\DOT Office\Battlet 3\Projects\366L06\CADD\366L06-sht-quant.txd

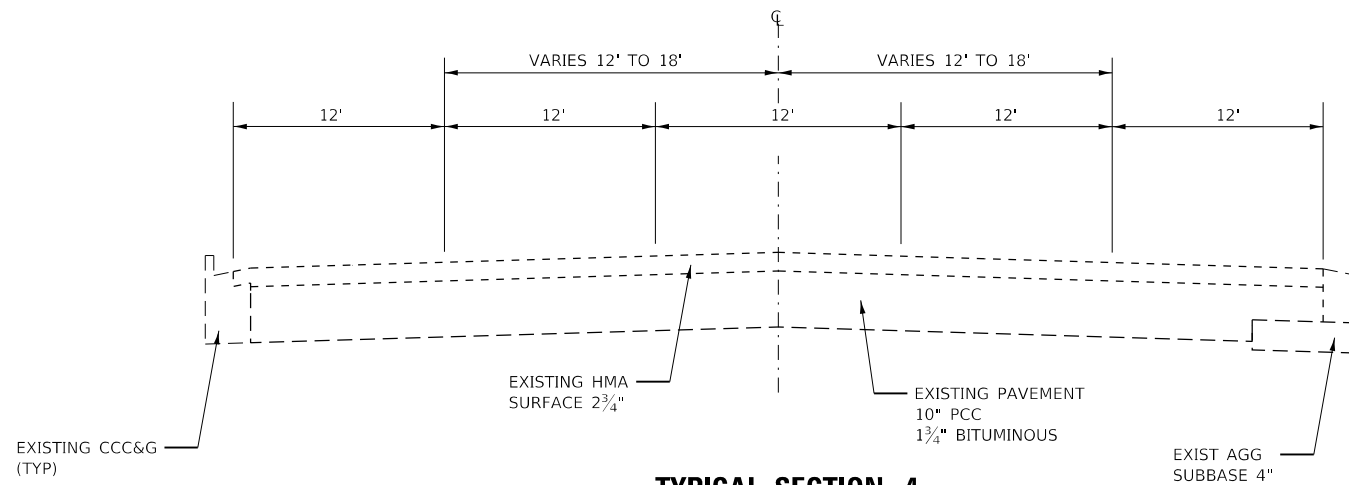
CODE NO.	ITEM	UNIT	TOTAL QUANTITY	80% FED 20% STATE	CONSTR. CODE
					NHPP FUNDING
					ROADWAY
					0005
					URBAN
45100100	CRACK ROUTING (PAVEMENT)	FOOT	138324		138324
45100200	CRACK FILLING	POUND	48414		48414
67100100	MOBILIZATION	L SUM	1		1
70102630	TRAFFIC CONTROL AND PROTECTION, STANDARD 701601	L SUM	1		1
70102632	TRAFFIC CONTROL AND PROTECTION, STANDARD 701602	L SUM	1		1
70102635	TRAFFIC CONTROL AND PROTECTION, STANDARD 701701	L SUM	1		1
70107025	CHANGEABLE MESSAGE SIGN	CAL DA	28		28

USER NAME = NOLASCOCJ	DESIGNED -	REVISED -	STATE OF ILLINOIS DEPARTMENT OF TRANSPORTATION	SUMMARY OF QUANTITIES		F.A.P. RTE.:	SECTION	COUNTY	TOTAL SHEETS	SHEET NO.	
PLOT SCALE = 100.0291' / in.	DRAWN -	REVISED -				324	(27R&28R)CJS	DEKALB	8	3	
PLOT DATE = 4/24/2020	CHECKED -	REVISED -		SCALE:		SHEET 1 OF 1 SHEETS		STA. TO STA.		CONTRACT NO. 66L06	
	DATE -	REVISED -						ILLINOIS FED. AID PROJECT			



TYPICAL SECTION 3

STA 1045+02 TO STA 1097+00
 STA 1108+00 TO STA 1124+77
 STA 1134+44 TO STA 1227+00
 STA 1198+67 TO STA 1199+40
 PROPOSED CRACK SEALING - SEE DETAIL



TYPICAL SECTION 4

STA 1227+00 TO STA 1241+25
 PROPOSED CRACK SEALING - SEE DETAIL

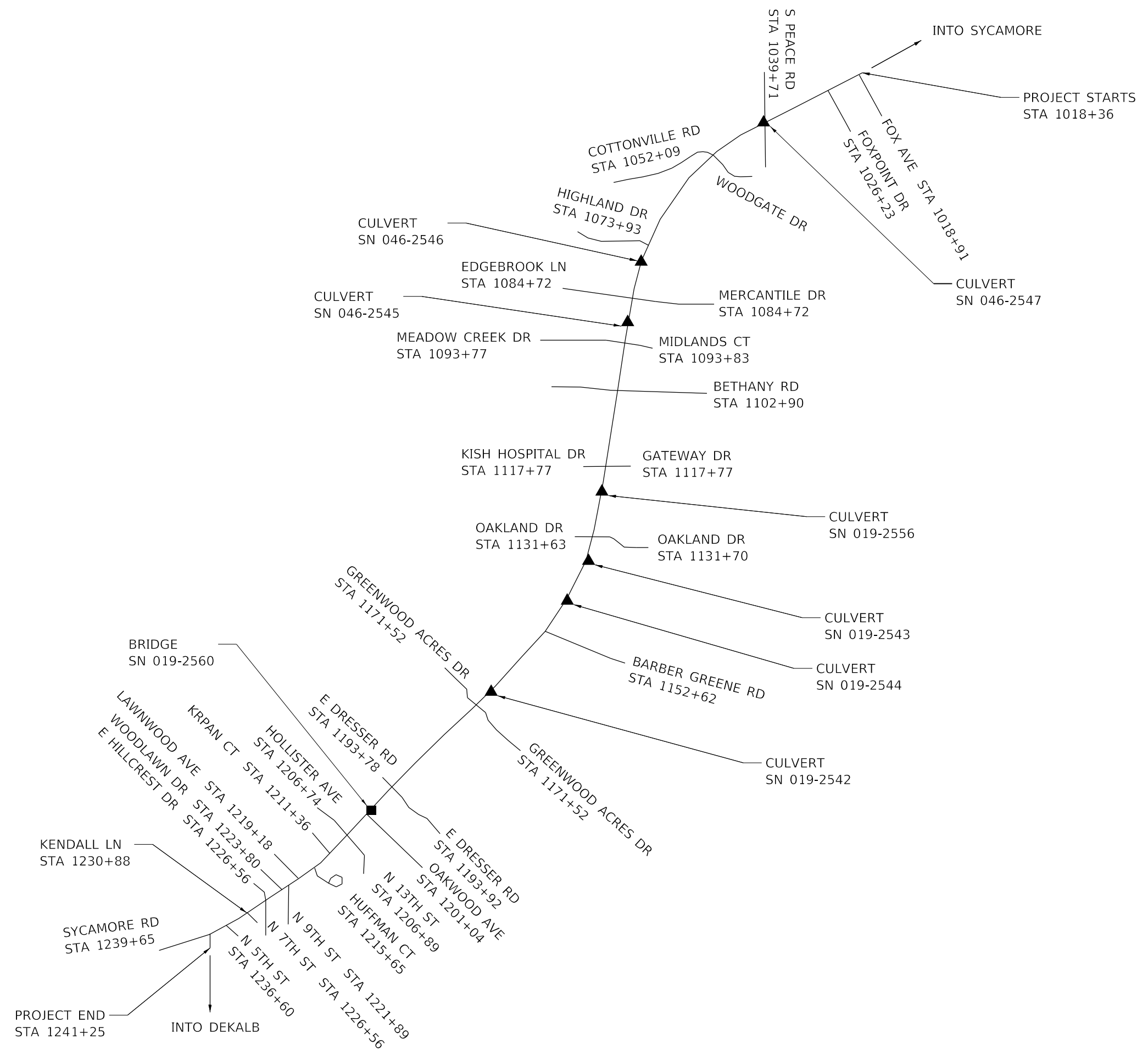
MODEL: Default
 FILE: \\nrcs\p\proj\66606\66606.dwg
 PROJECT: 66606
 DATE: 4/24/2020

USER NAME = NOLASCOCJ	DESIGNED -	REVISED -
	DRAWN -	REVISED -
PLOT SCALE = 100.0291' / in.	CHECKED -	REVISED -
PLOT DATE = 4/24/2020	DATE -	REVISED -

**STATE OF ILLINOIS
 DEPARTMENT OF TRANSPORTATION**

TYPICAL SECTIONS			
SCALE:	SHEET 2	OF 2 SHEETS	STA. TO STA.

F.A.P. RTE.	SECTION	COUNTY	TOTAL SHEETS	SHEET NO.
324	(27R&28R)CJS	DEKALB	8	5
CONTRACT NO. 66L06				
ILLINOIS FED. AID PROJECT				



MODEL: Default
 FILE: Model: P:\projects\2020\20200424\20200424.dwg
 PROJECT: 20200424\20200424.dwg
 OFFICE: 20200424\20200424.dwg
 USER: nolasocj

USER NAME = NOLASOCJ	DESIGNED -	REVISED -
	DRAWN -	REVISED -
PLOT SCALE = 100.0291' / in.	CHECKED -	REVISED -
PLOT DATE = 4/24/2020	DATE -	REVISED -

STATE OF ILLINOIS
DEPARTMENT OF TRANSPORTATION

GENERAL NOTES			
SCALE:	SHEET 1	OF 1	SHEETS
	STA.	TO STA.	

F.A.P. RTE.	SECTION	COUNTY	TOTAL SHEETS	SHEET NO.
324	(27R&28R)CJS	DEKALB	8	6
CONTRACT NO. 66L06				
ILLINOIS FED. AID PROJECT				

CRACK AND SEALING SCHEDULE				
LOCATION	LONGITUDINAL CRACK ROUTING (PAVEMENT)	TRANSVERSE CRACK ROUTING (PAVEMENT)	LONGITUDINAL CRACK FILLING	TRANSVERSE CRACK FILLING
	FOOT	FOOT	POUND	POUND
PEACE RD	51,598	1,908	18,059	668
BETHANY RD	29,170	1,404	10,210	491
BARBER GREEN RD	48,436	5,808	16,953	2,033
SUB-TOTAL	129,204	9,120	45,222	3,192
TOTAL	138,324		48,414	

MODEL: Default
FILE: \\nrcs\p\proj\lancom\dat\illinois\pwr\DOT\Documents\DOT_Offices\Bartlett_3\Projects\0366\06\CADD\0366_06-sht-crack.dgn

USER NAME = NOLASCOCJ	DESIGNED -	REVISED -	STATE OF ILLINOIS DEPARTMENT OF TRANSPORTATION	SCHEDULES		F.A.P. RTE.:	SECTION	COUNTY	TOTAL SHEETS	SHEET NO.
PLOT SCALE = 100.0291' / in.	DRAWN -	REVISED -				324	(27R&28R)CJS	DEKALB	8	7
PLOT DATE = 4/24/2020	CHECKED -	REVISED -		SCALE:		SHEET 1 OF 1 SHEETS		STA. TO STA.		CONTRACT NO. 66L06
	DATE -	REVISED -						ILLINOIS FED. AID PROJECT		

