

STATE OF ILLINOIS
DEPARTMENT OF TRANSPORTATION
PLANS FOR PROPOSED
STP BRIDGE PROGRAM
SECTION 17-01133-00-BR
PROJECT 6NPR(310)
VERMILION COUNTY
BLOUNT ROAD DISTRICT
TR 186 (INDIAN SPRINGS ROAD)
C-95-001-21

T.R. RTE.	SECTION	COUNTY	TOTAL SHEETS	SHEET NO.
186	17-01133-00-BR	VERMILION	22	1
FEDERAL AID PROJECT		ILLINOIS	CONTRACT NO. 91593	

SEE SHEET 2 FOR
INDEX OF SHEETS AND
LIST OF ILLINOIS DOT HIGHWAY STANDARDS

UTILITY CONTACTS:

UTILITY TYPE:

CABLE
COMCAST
 (224)229-5862
 ATTN: MARTH GIERAS

UTILITY TYPE:

ELECTRIC
AMEREN IP - (NORTH)
 (618)301-5327
 ATTN: NATHAN HILL

UTILITY TYPE:

TELEPHONE
FRONTIER COMMUNICATIONS (NORTH)
 (815)895-1515
 ATTN: KALIN HINSHAW

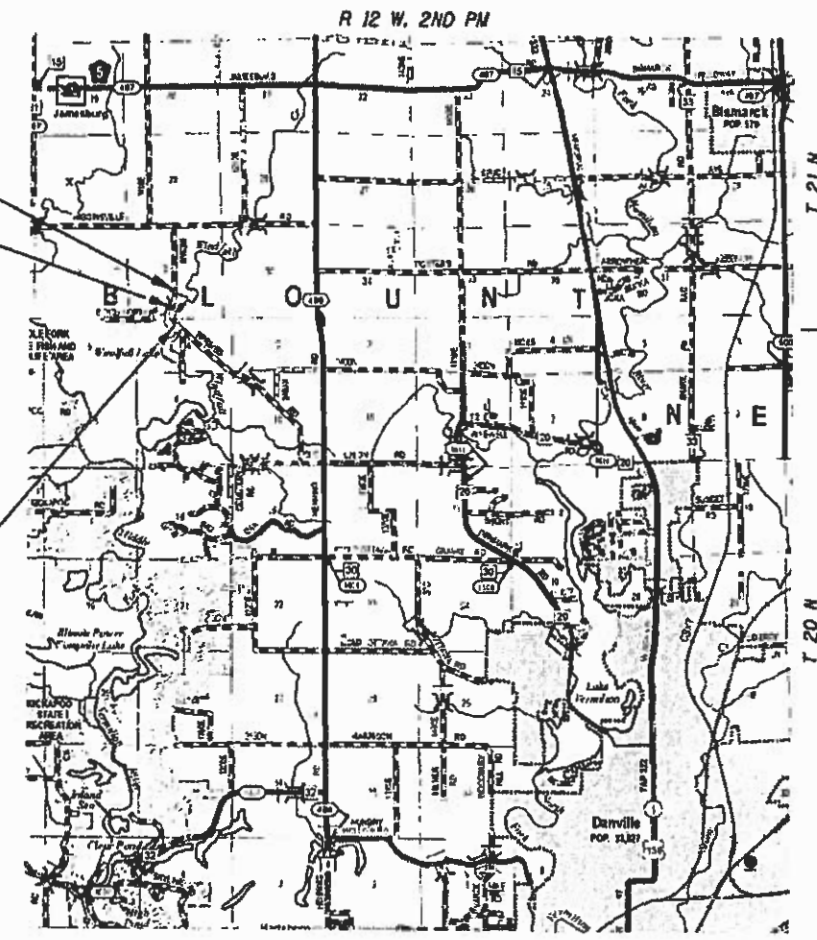


END IMPROVEMENT
 STA 108+15.00

PROPOSED STRUCTURE NO. 092-3537
 STA 104+16.00 @ LOCAL TANGENT
 PRECAST PRESTRESSED CONCRETE DECK
 BEAM BRIDGE, ONE SPAN AT 58'-0"
 59'-7" BK-BK ABUTMENTS
 27'-0" ROADWAY FC-FC RAILS
 NO SKEW

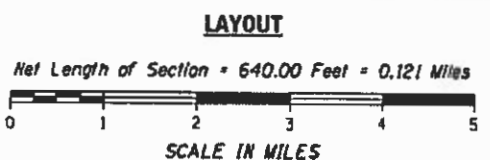
PROPOSED SN 092-3537
 REPLACES
 EXISTING SN 092-3143

BEGIN IMPROVEMENT
 STA 101+75.00



FULL SIZE PLANS HAVE BEEN PREPARED USING STANDARD ENGINEERING SCALES. REDUCED SIZED PLANS WILL NOT CONFORM TO STANDARD SCALES. IN MAKING MEASUREMENTS ON REDUCED PLANS, THE ABOVE SCALES MAY BE USED.

J.U.L.I.E.
JOINT UTILITY LOCATION INFORMATION FOR EXCAVATION
 1-800-892-0123
 OR 811



FUNCTIONAL CLASSIFICATION : LOCAL ROAD OR STREET
 DESIGN SPEED 30 MPH
 CURRENT ADT = 100 (2003)



Michael D. Cummins 4/09/20
 ILLINOIS PROFESSIONAL NO. 43244
 (Expires 11/30/21)

APPROVED 4/17 2020
Adrian L. Arewell
 VERMILION COUNTY ENGINEER

PASSED 4-17 2020
Randall E. Sebeck
 ROAD DISTRICT COMMISSIONER

PASSED MAY 6 2020
[Signature]
 DISTRICT FIVE ENGINEER OF LOCAL ROADS AND STREETS

RELEASED FOR BID BASED ON LIMITED REVIEW May 6 2020
[Signature]
 REGION THREE ENGINEER

STATE OF ILLINOIS
 DEPARTMENT OF TRANSPORTATION

PRINTED BY THE AUTHORITY
OF THE STATE OF ILLINOIS

INDEX OF SHEETS

- 1 COVER SHEET
- 2 INDEX OF SHEETS, HIGHWAY STANDARDS, AND GENERAL NOTES
- 3 SUMMARY OF QUANTITIES
- 4 TYPICAL CROSS SECTIONS
- 5 SCHEDULE OF QUANTITIES
- 6 ALIGNMENT & CROSS TIES
- 7-8 PLAN & PROFILE
- 9 CONCRETE COLLAR DETAIL
- 10-18 BRIDGE PLANS
- 19-22 CROSS SECTIONS

GENERAL NOTES

1. WHERE SECTION OR SUBSECTION MONUMENTS ARE ENCOUNTERED, THE ENGINEER SHALL BE NOTIFIED BEFORE ANY SUCH MONUMENTS ARE REMOVED. THE CONTRACTOR SHALL PROTECT AND CAREFULLY PRESERVE ALL PROPERTY MARKS AND MONUMENTS UNTIL THE OWNER, AN AUTHORIZED SURVEYOR OR AGENT HAS WITNESSED OR OTHERWISE REFERENCED THEIR LOCATION.
2. THE AREA TO BE SEEDED SHALL CONSIST OF ALL DISTURBED EARTH SURFACES WITHIN THE RIGHT OF WAY AS DIRECTED BY THE ENGINEER.

SEEDING CLASS 2 = 0.50 ACRE
3. ALL ELEVATIONS SHOWN ON THE PLANS ARE BASED ON NORTH AMERICAN VERTICAL DATUM OF 1988 (NAVD88).
4. THE LOCATIONS OF EXISTING WATER MAINS, GAS MAINS, ELECTRIC POWER LINES, TELEPHONE LINES, AND OTHER UTILITIES AS SHOWN ON THE PLANS ARE BASED ON CAREFUL FIELD INVESTIGATION AND THE BEST INFORMATION AVAILABLE, BUT ARE NOT GUARANTEED. IT SHALL BE THE CONTRACTOR'S RESPONSIBILITY TO ASCERTAIN THEIR EXACT LOCATION FROM THE UTILITY COMPANIES, MUNICIPALITIES AND FIELD INSPECTION. SEE STANDARD SPECIFICATIONS.
5. BEFORE ORDERING PIPE CULVERTS, THE CONTRACTOR SHALL CONSULT THE ENGINEER FOR THE EXACT PIPE LENGTHS.
6. LAYOUT OF EROSION CONTROL ITEMS MAY BE VARIED IN THE FIELD TO SUIT GROUND CONDITIONS AS DIRECTED BY THE ENGINEER.

HIGHWAY STANDARDS

- 000001-07 STANDARD SYMBOLS, ABBREVIATIONS AND PATTERNS
- 001001-02 AREAS OF REINFORCEMENT BARS
- 001006 DECIMAL OF AN INCH AND OF A FOOT
- 280001-07 TEMPORARY EROSION CONTROL SYSTEMS
- 515001-04 NAME PLATE FOR BRIDGES
- 701901-08 TRAFFIC CONTROL DEVICES
- BLR 21-9 TYPICAL APPLICATION OF TRAFFIC CONTROL DEVICES FOR CONSTRUCTION ON RURAL LOCAL HIGHWAYS

APPLICATION RATES USED IN QUANTITY CALCULATIONS

- GRANULAR MATERIALS.....1.8 TONS / CU YD
- RIPRAP.....1.75 TONS / CY YD
- TEMPORARY EROSION CONTROL SEEDING....100 POUNDS/ACRE

 Cummins Engineering Corporation <small>Civil and Structural Engineering</small>	JOB # 2601	DESIGNED - CGF	REVISED -	VERMILION COUNTY BLOUNT ROAD DISTRICT TR 186 IMPROVEMENTS	INDEX OF SHEETS, HIGHWAY STANDARDS, AND GENERAL NOTES		T.R. RTE.	SECTION	COUNTY	TOTAL SHEETS	SHEET NO.
	FILE NAME = 2601-shs-gen notes.dgn	DRAWN - TEC	REVISED -		186	17-01133-00-BR	VERMILION	22	2		
	PLOT SCALE = 5.0000' / 1" =	CHECKED - CGF	REVISED -		CONTRACT NO. 91593						
	PLOT DATE = 4/14/2020	DATE - 3/28/2020	REVISED -		SCALE:	SHEET NO.	OF SHEETS	STA.	TO STA.	FED. ROAD DIST. NO.	ILLINOIS FED. AID PROJECT

SUMMARY OF QUANTITIES

CODE NO.	ITEM	UNIT	TOTAL QUANTITY
20101000	TEMPORARY FENCE	FOOT	100
20200100	EARTH EXCAVATION	CU YD	270
20300100	CHANNEL EXCAVATION	CU YD	80
20400800	FURNISHED EXCAVATION	CU YD	1,260
25000200	SEEDING, CLASS 2	ACRE	0.50
25000400	NITROGEN FERTILIZER NUTRIENT	POUND	45
25000500	PHOSPHORUS FERTILIZER NUTRIENT	POUND	45
25000600	POTASSIUM FERTILIZER NUTRIENT	POUND	45
25100115	MULCH, METHOD 2	ACRE	0.50
28000250	TEMPORARY EROSION CONTROL SEEDING	POUND	50
28000400	PERIMETER EROSION BARRIER	FOOT	100
28000500	INLET AND PIPE PROTECTION	EACH	1
40200800	AGGEGATE SURFACE COURSE, TYPE B	TON	817
50100100	REMOVAL OF EXISTING STRUCTURES	EACH	1
50200100	STRUCTURE EXCAVATION	CU YD	49
50300225	CONCRETE STRUCTURES	CU YD	26.2
50400505	PRECAST PRESTRESSED CONCRETE DECK BEAMS (27" DEPTH)	SQ FT	1,566

* SEE SPECIAL PROVISIONS

SUMMARY OF QUANTITIES

CODE NO.	ITEM	UNIT	TOTAL QUANTITY
50800205	REINFORCEMENT BARS, EPOXY COATED	POUND	3,330
Δ 50900205	STEEL RAILING, TYPE S1	FOOT	116
51201400	FURNISHING STEEL PILES, HP 10X42	FOOT	360
51202305	DRIVING PILES	FOOT	360
51203400	TEST PILE STEEL HP 10X42	EACH	2
51500100	NAME PLATES	EACH	1
54248510	CONCRETE COLLAR	CU YD	0.5
* 54205059	PIPE CULVERTS, SPECIAL 24"	FOOT	18
59300100	CONTROLLED LOW-STRENGTH MATERIAL	CU YD	40.4
66600105	FURNISHING AND ERECTING RIGHT OF WAY MARKERS	EACH	10
67100100	MOBILIZATION	L SUM	1
Δ 72501000	TERMINAL MARKER - DIRECT APPLIED	EACH	4
* X2010400	STUMP REMOVAL ONLY	UNIT	408
* X2810208	STONE RIPRAP, CLASS A4 (SPECIAL)	TON	240
* X7011800	TRAFFIC CONTROL AND PROTECTION, STANDARD BLR 21	L SUM	1
* Z0013798	CONSTRUCTION LAYOUT	L SUM	1
* XX004566	CONCRETE CUT-OFF WALL	CU YD	6.3

* SEE SPECIAL PROVISIONS

Δ SPECIALTY ITEMS

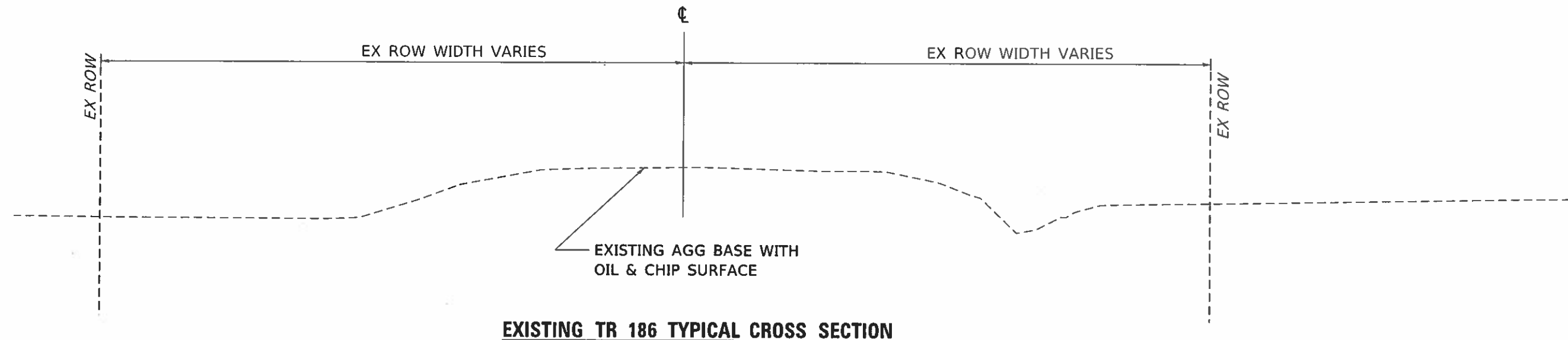


JOB # 2601	DESIGNED -	REVISED -
FILE NAME # #FILES#	DRAWN -	REVISED -
PLOT SCALE # #SCALE#	CHECKED -	REVISED -
PLOT DATE # #DATE#	DATE -	REVISED -

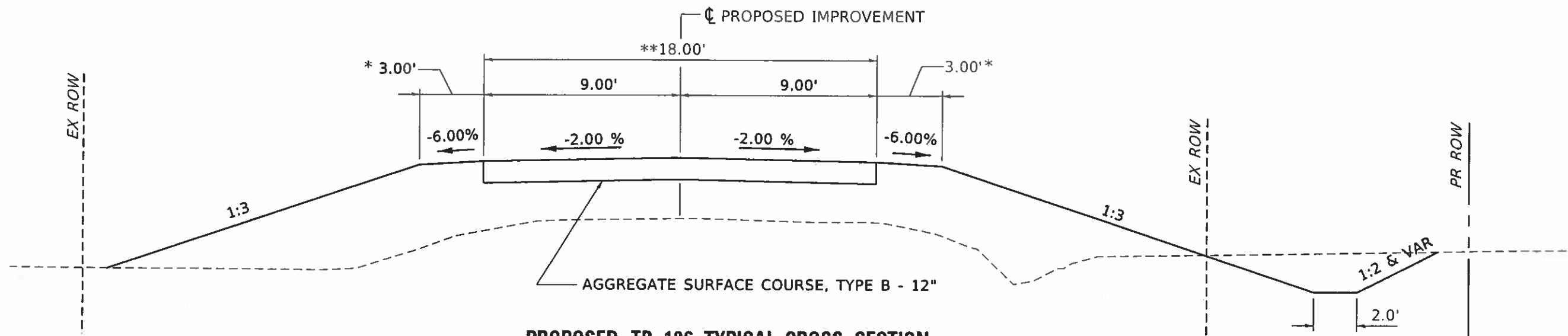
**VERMILION COUNTY
BLOUNT ROAD DISTRICT
TR 186 IMPROVEMENTS**

SUMMARY OF QUANTITIES

SCALE:	SHEET NO. OF SHEETS	STA. TO STA.	T.R. RTE. 186	SECTION 17-01133-00-BR	COUNTY VERMILION	TOTAL SHEETS 22	SHEET NO. 3
						CONTRACT NO. 91593	
FED. ROAD DIST. NO. ILLINOIS FED. AID PROJECT							



EXISTING TR 186 TYPICAL CROSS SECTION



PROPOSED TR 186 TYPICAL CROSS SECTION

FILL SECTION - CONSTRUCT AS SHOWN ON STATION CROSS SECTIONS

STA 101+75.00 TO STA 103+86.21
STA 104+45.79 TO STA 108+15.00

CUT SECTION - CONSTRUCT AS SHOWN ON STATION CROSS SECTIONS

** PAVEMENT TRANSITIONS TO MATCH EXISTING PAVEMENT FROM 15.30' TO 18.00' STA 101+75.00 TO 102+00.00

* EARTH SHOULDER TRANSITIONS FROM 3.00' TO 4.50' STA 103+36.00 TO 103+86.21 STA 104+96.00 TO 104+45.79



JOB - 2601	DESIGNED - TEC	REVISED -
FILE NAME - 2601-ah-typical.dgn	DRAWN - CGF	REVISED -
PLOT SCALE - 5.0000' / 1"	CHECKED - TEC	REVISED -
PLOT DATE - 4/14/2020	DATE - 3/28/2020	REVISED -

VERMILION COUNTY
BLOUNT ROAD DISTRICT
TR 186 IMPROVEMENTS

TYPICAL SECTION

SCALE: SHEET NO. OF SHEETS STA. TO STA.

T.R. RTE.	SECTION	COUNTY	TOTAL SHEETS	SHEET NO.
186	1T-01133-00-BR	VERMILION	22	4
FED. ROAD DIST. NO. ILLINOIS FED. AID PROJECT			CONTRACT NO. 91593	

EARTHWORK

LOCATION	EARTH EXCAVATION	EXCAVATION ADJUSTED FOR SHRINKAGE	EMBANKMENT	EARTHWORK BALANCE WASTE (+) OR SHORTAGE (-)
STA 101+75.00	180	135	420	-285
STA 103+96.21 TO STA 104+35.79	90	70	1045	-975
TOTAL	270	205	1,465	-1,260

SHRINKAGE = 25%

28000250 TEMPORARY EROSION CONTROL SEEDING

LOCATION	POUND
LT STA 7+40 TO STA 9+70	23
RT STA 8+10 TO STA 11+55	26
TOTAL	49
USE	50

28000500 INLET AND PIPE PROTECTION

LOCATION	EACH
LT STA 106+85	1
TOTAL	1

LANDSCAPING	SEEDING CLASS 2	MULCH METHOD 2	NITROGEN FERTILIZER NUTRIENT	NITROGEN FERTILIZER NUTRIENT	NITROGEN FERTILIZER NUTRIENT
	ACRE	ACRE	POUND	POUND	POUND
LT STA 7+40 TO STA 9+70	0.23	0.23	21	21	21
RT STA 8+10 TO STA 11+55	0.26	0.26	23	23	23
TOTAL	0.49	0.49	44	44	44
USE	0.50	0.50	45	45	45

28000400 PERIMETER EROSION BARRIER

LOCATION	FOOT
LT STA 103+47 TO STA 103+94	50
LT STA 104+37 TO STA 104+47	10
RT STA 103+65 TO STA 103+88	20
RT STA 104+33 TO STA 104+53	20
TOTAL	100

40200800 AGGREGATE SURFACE COURSE, TYPE B

LOCATION	TON
STA 101+75.00 TO STA 102+00.00 (Width 15.3' to 18.0')	25.5
STA 102+00.00 TO STA 103+86.21 (Width 18.0')	223.45
STA 104+45.79 TO STA 108+15.00 (Width 18.0')	443.05
LT SIDEROAD E 2520 N RD	125.31
TOTAL	817.31
USE	817

20101000 TEMPORARY FENCE

LOCATION	FOOT
LT STA 103+91.4 TO STA 104+04.0	15
LT STA 104+33.7 TO STA 104+49.5	15
RT STA 103+86.6 TO STA 103+99.5	15
RT STA 104+26.9 TO STA 104+80.3	55
TOTAL	100

54205059 PIPE CULVERTS, SPECIAL 24"

LOCATION	FOOT
LT STA 106+38.50 TO STA 106+55.90	18
TOTAL	18

54248510 CONCRETE COLLAR

LOCATION	CU YD
LT STA 106+55.90	0.45
TOTAL	0.45
USE	0.5

66600105 FURNISHING AND ERECTING RIGHT OF WAY MARKERS

LOCATION	EACH
35.00' LT STA 102+99.99	1
35.00' LT STA 105+49.99	1
32.96' LT STA 105+49.99	1
33.48' RT STA 103+10.00	1
37.50' RT STA 103+10.00	1
37.50' RT STA 103+84.93	1
42.50' RT STA 105+00.00	1
42.50' RT STA 105+35.00	1
25.83' RT STA 107+00.00	1
30.00' RT STA 107+00.00	1
TOTAL	10

X2010400 STUMP REMOVAL

LOCATION	UNIT
14.6' LT STA 102+20.20	8
16.4' LT STA 102+21.00	6
14.4' LT STA 102+24.30	8
17.7' LT STA 102+26.80	8
15.1' LT STA 102+43.40	6
18.5' LT STA 102+80.20	14
13.0' LT STA 102+84.00	5
24.4' LT STA 103+10.70	8
24.1' LT STA 103+13.00	7
20.4' LT STA 103+21.90	6
17.4' LT STA 103+45.30	6
14.3' LT STA 103+46.30	6
14.3' LT STA 103+46.30	6
28.7' LT STA 103+46.40	7
18.9' LT STA 103+64.80	12
16.3' LT STA 103+70.20	8
32.4' LT STA 103+67.90	8
14.4' LT STA 103+77.30	8
32.7' LT STA 104+47.70	8
34.4' LT STA 104+63.90	9
34.4' LT STA 104+63.90	9
28.8' LT STA 104+87.10	48
32.9' LT STA 105+46.70	5
29.5' RT STA 102+60.40	8
32.4' RT STA 102+73.90	10
25.8' RT STA 102+80.80	8
23.9' RT STA 102+93.00	7
23.9' RT STA 102+93.00	7
32.8' RT STA 102+98.40	6
31.1' RT STA 103+03.20	12
31.2' RT STA 103+27.70	22
30.5' RT STA 103+31.90	6
27.2' RT STA 103+36.40	11
27.9' RT STA 103+37.30	8
26.6' RT STA 103+42.00	10
26.6' RT STA 103+42.00	10
26.4' RT STA 103+42.30	7
23.0' RT STA 103+50.00	8
18.5' RT STA 103+72.90	18
18.5' RT STA 103+72.90	18
25.5' RT STA 104+64.00	7
25.3' RT STA 104+73.10	9
TOTAL	408

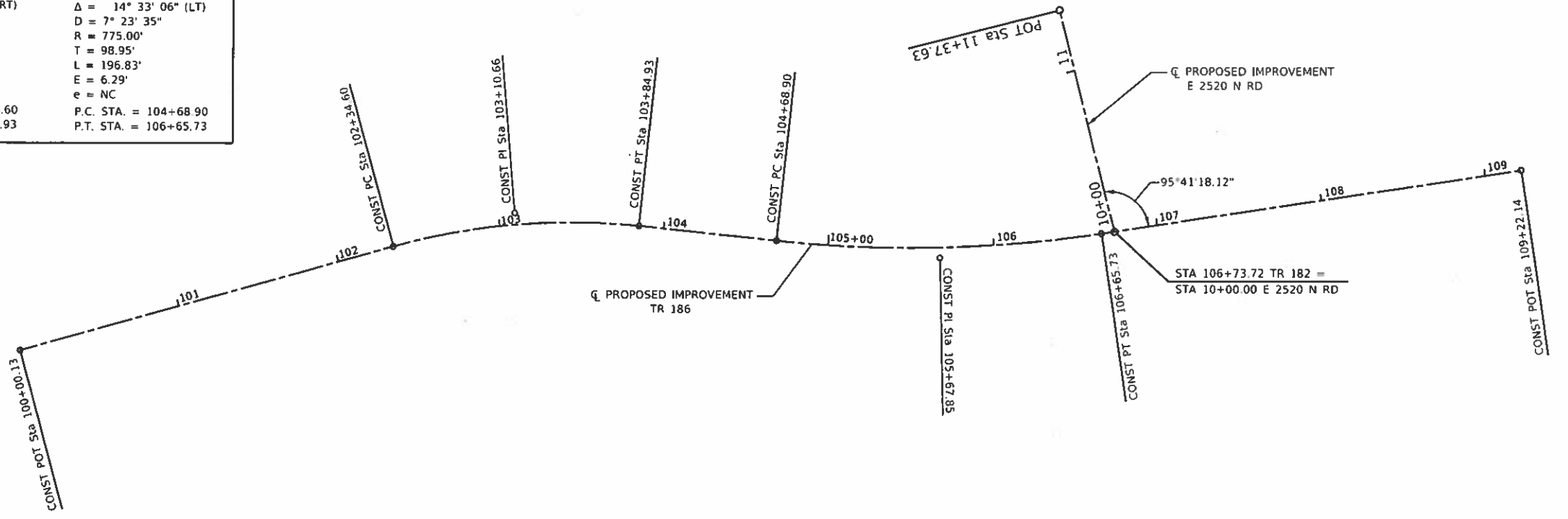


JOB : 2601	DESIGNED - TEC	REVISED -
FILE NAME : 2601-sht-sched.dgn	DRAWN - CGF	REVISED -
PLOT SCALE = 20,000 1" = 200'	CHECKED - TEC	REVISED -
PLOT DATE : 4/28/2020	DATE - 3/28/2020	REVISED -

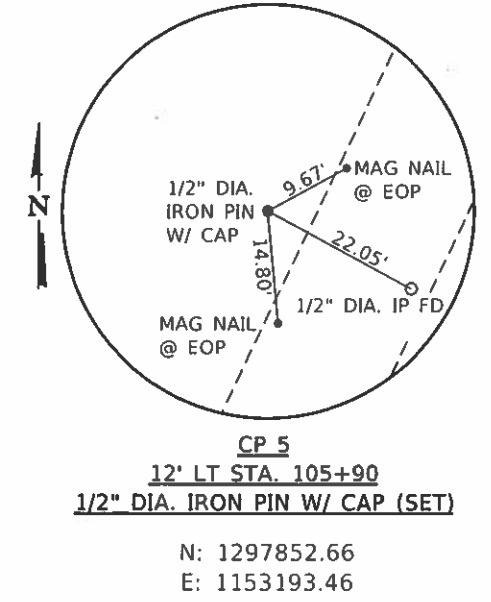
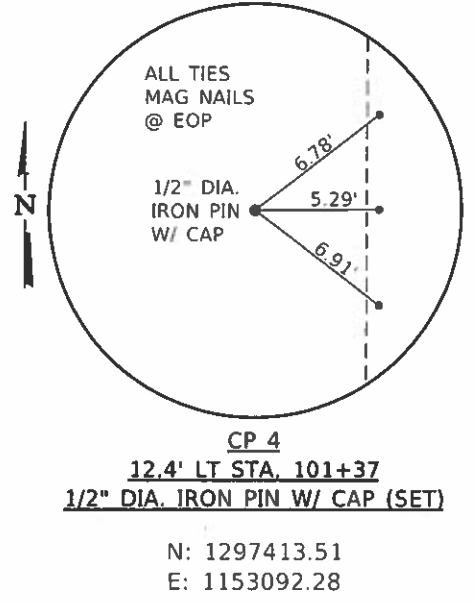
VERMILION COUNTY BLOUNT ROAD DISTRICT TR 186 IMPROVEMENTS

SCALE:		SHEET NO. OF SHEETS		STA.	TO STA.	T.R. RTE.	SECTION	COUNTY	TOTAL SHEETS	SHEET NO.
						186	17-01133-00-BR	VERMILION	22	5
						CONTRACT NO. 91593				
						FED. ROAD DIST. NO. [ILLINOIS] FED. AID PROJECT				

PROPOSED IMPROVEMENT CENTERLINE	
PROP. CURVE PRCURV1 PI STA. = 103+10.66 Δ = 21° 31' 58" (RT) D = 14° 19' 26" R = 400.00' T = 76.06' L = 150.33' E = 7.17' e = NC P.C. STA. = 102+34.60 P.T. STA. = 103+84.93	PROP. CURVE PRCURV2 PI STA. = 105+67.85 Δ = 14° 33' 06" (LT) D = 7° 23' 35" R = 775.00' T = 98.95' L = 196.83' E = 6.29' e = NC P.C. STA. = 104+68.90 P.T. STA. = 106+65.73



PROPOSED IMPROVEMENT CENTERLINE								
Element	Point Type	Station	Northing	Easting	Radius	Length	Delta / Theta	Rotation Direction
Tangent	POT	100+00.13 R1	1,297,276.13	1,153,102.74				
Tangent	PC	102+34.60 R1	1,297,510.58	1,153,106.03				
Arc	PC	102+34.60 R1	1,297,510.58	1,153,106.03				
Arc	PI	103+10.66 R1	1,297,586.63	1,153,107.10	400	150.33	21° 31' 58"	Right
Arc	CC		1,297,504.97	1,153,505.99				
Arc	PT	103+84.93 R1	1,297,656.99	1,153,136.00				
Tangent	PT	103+84.93 R1	1,297,656.99	1,153,136.00				
Tangent	PC	104+68.90 R1	1,297,734.66	1,153,167.92				
Arc	PC	104+68.90 R1	1,297,734.66	1,153,167.92				
Arc	PI	105+67.85 R1	1,297,826.18	1,153,205.52	775	196.83	14° 33' 06"	Left
Arc	CC		1,298,029.20	1,152,451.07				
Arc	PT	106+65.73 R1	1,297,924.22	1,153,218.92				
Tangent	PT	106+65.73 R1	1,297,924.22	1,153,218.92				
Tangent	POT	109+22.14 R1	1,298,178.27	1,153,253.66				



MODDT: D:\work\2601\17-01-17-00-00.dwg
 FILE NAME: 2601-17-01-17-00-00.dwg



DESIGNED - TEC	REVISED -
DRAWN - CCF	REVISED -
CHECKED - TEC	REVISED -
DATE - 3/28/2020	REVISED -

**VERMILION COUNTY
 BLOUNT ROAD DISTRICT
 TR 186 IMPROVEMENTS**

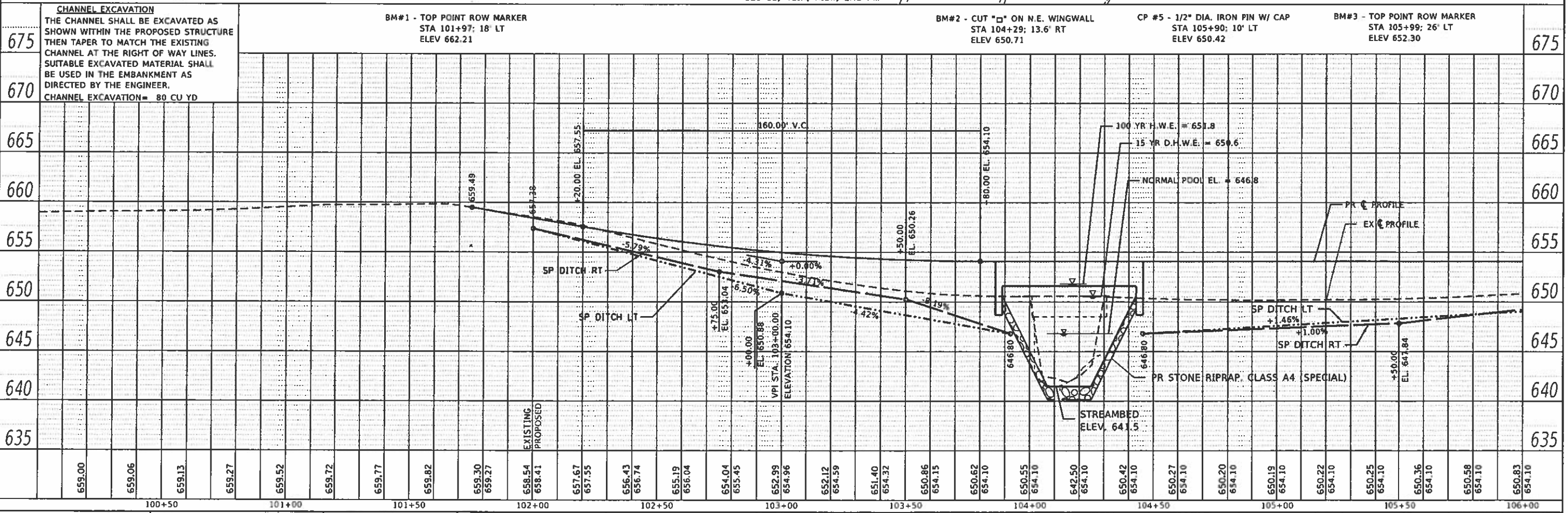
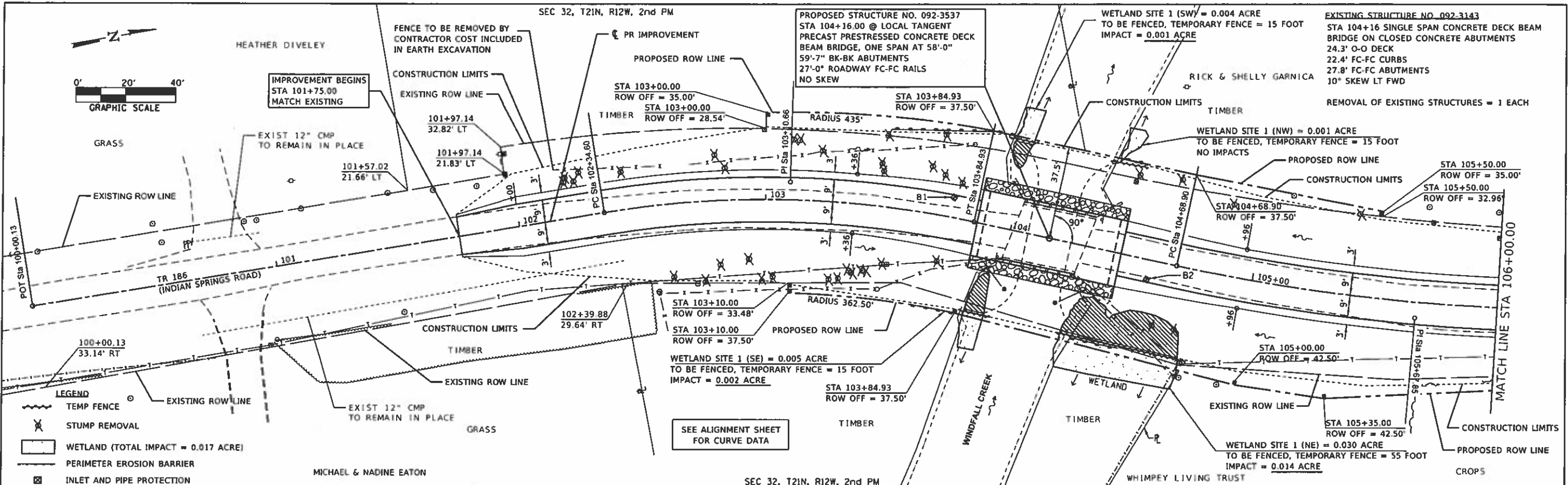
**SURVEY ALIGN, CONSTRUCTION ALIGN
 AND CROSS TIES**

SCALE: SHEET OF SHEETS 3'A TO STA

TR RTE	SECTION	COUNTY	TOTAL SHEETS	SHEET NO.
186	17-01133-00-BR	VERMILION	22	6
CONTRACT NO. 91593				

DATE	
BY	
PROJECT	
PROFIT	
NO. 1	
NO. 2	
NO. 3	
NO. 4	
NO. 5	
NO. 6	
NO. 7	
NO. 8	
NO. 9	
NO. 10	

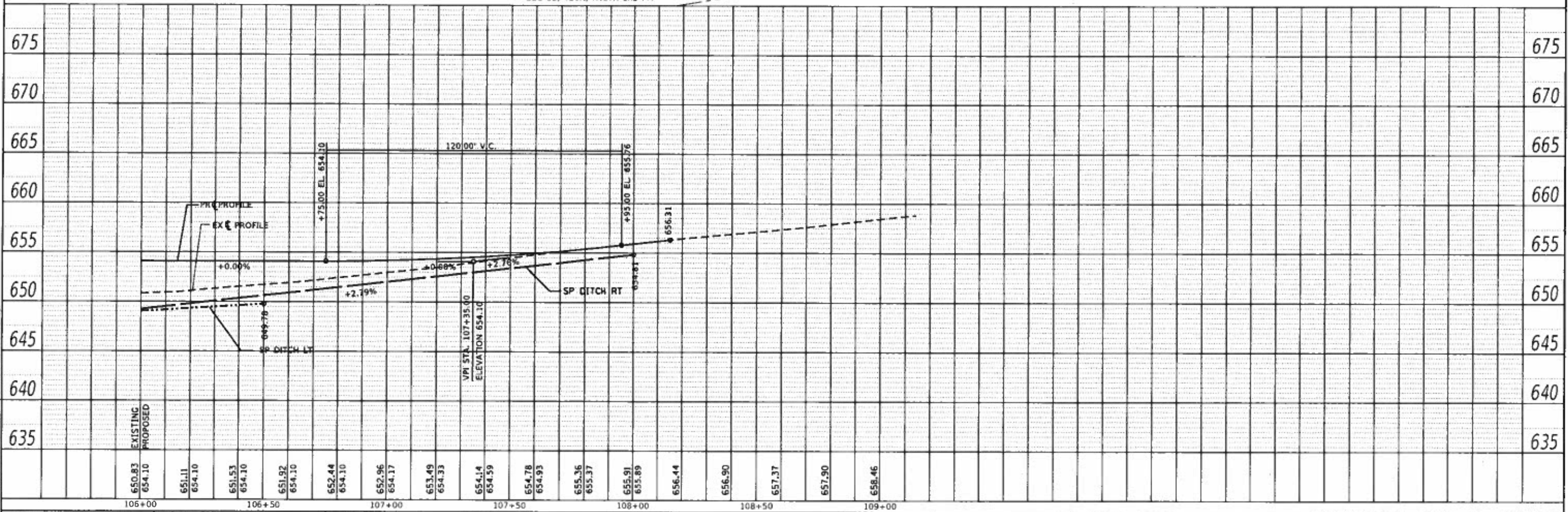
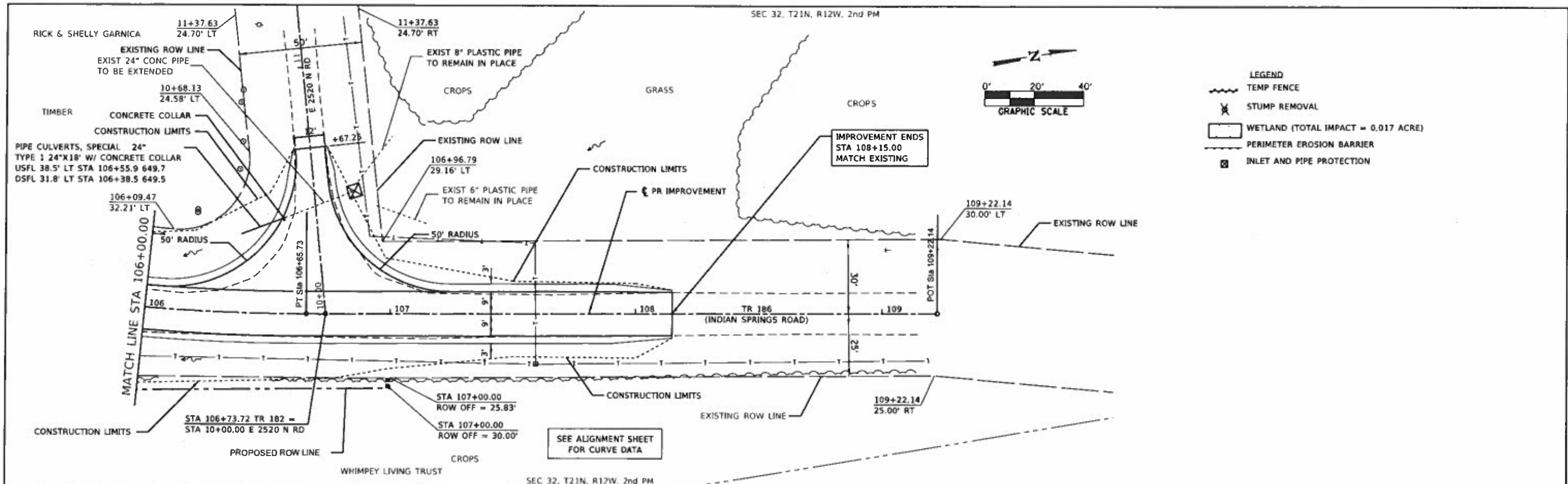
DATE	
BY	
PROJECT	
PROFIT	
NO. 1	
NO. 2	
NO. 3	
NO. 4	
NO. 5	
NO. 6	
NO. 7	
NO. 8	
NO. 9	
NO. 10	



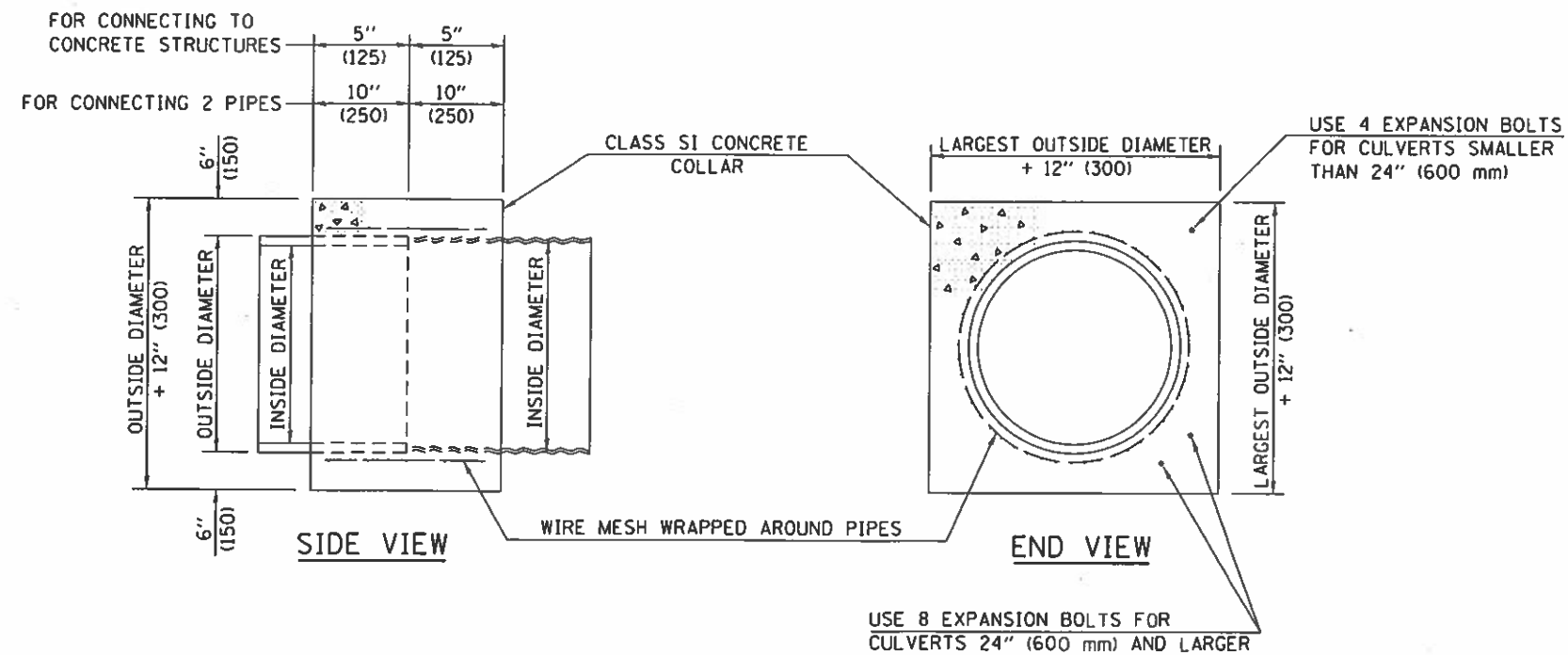
CEC Cummins Engineering Corporation Civil and Structural Engineering	JOB # 2601	DESIGNED - TEC	REVISED -	VERMILION COUNTY BLOUNT ROAD DISTRICT TR 186 IMPROVEMENTS	PLAN AND PROFILE SCALE: 1" = 20' SHEET OF SHEETS STA. TO STA.	TR. RTE 186 SECTION 17-01133-00-BR COUNTY VERMILION TOTAL SHEETS 22 SHEET NO. 7 CONTRACT NO. 91593
	FILE NAME = 2601-StrP&P.dwg	DRAWN - CCF	REVISED -			
	PLOT SCALE = 1/8" = 1'-0"	CHECKED - TEC	REVISED -			
	PLOT DATE = 4/1/2020	DATE = 3/28/2020	REVISED -			

DATE	
BY	
CHECKED	
DESIGNED	
PROJECT	
NO.	
PLAN	
DATE	
BY	
CHECKED	
DESIGNED	
PROJECT	
NO.	

DATE	
BY	
CHECKED	
DESIGNED	
PROJECT	
NO.	
PROFILE	
DATE	
BY	
CHECKED	
DESIGNED	
PROJECT	
NO.	



CEC Cummins Engineering Corporation Civil and Structural Engineering	JOB # 2604 FILE NAME = 2601-SR-FRP.dgn PLOT SCALE = 1/4" = 10.0000' @ 1" = 10' PLOT DATE = 4/17/2020	DESIGNED - TC DRAWN - CGF CHECKED - TC DATE - 8/28/2020	REVISED - REVISED - REVISED - REVISED -	VERMILION COUNTY BLOUNT ROAD DISTRICT TR 186 IMPROVEMENTS	PLAN AND PROFILE SCALE: 1" = 20' SHEET OF SHEETS STA. TO STA.	T.R. 186 SECTION 17-01133-00-BR COUNTY VERMILION TOTAL SHEETS 22 SHEET NO. 8 CONTRACT NO. 91593
	PROJECT NO. 17-01133-00-BR					



GENERAL NOTES

1. CLASS SI CONCRETE SHALL BE USED THROUGHOUT.
2. WHEN CONCRETE COLLARS ARE USED TO CONNECT PIPES OF DIFFERENT OUTSIDE DIAMETERS, THE CONCRETE COLLAR SHALL BE FORMED USING THE LARGEST OUTSIDE DIAMETER (SEE END VIEW).
3. THE WIRE MESH SHALL WEIGH NOT LESS THAN 54#/100 SQ. FT. (2.63 kg/m²). WIRE MESH WILL NOT BE PAID FOR SEPARATELY SHALL BE INCLUDED IN THE COST FOR CONCRETE COLLARS.
4. WHEN CONCRETE COLLARS ARE CONSTRUCTED ADJACENT TO AN EXISTING CONCRETE STRUCTURE (HEADWALLS, ETC.) EXPANSION BOLTS, SHALL BE USED AND WILL BE PAID FOR AT THE CONTRACT UNIT PRICE, EACH, FOR EXPANSION BOLTS OF THE SIZE SPECIFIED IN THE PLANS.
5. CONCRETE COLLARS WILL BE PAID FOR AT THE CONTRACT UNIT PRICE, PER CUBIC YARD (CUBIC METER), FOR CONCRETE COLLARS INCLUDING ALL MATERIAL AND LABOR SPECIFIED TO COMPLETE THE WORK IN PLACE.

Note: All dimensions are in INCHES (millimeters) unless otherwise shown.

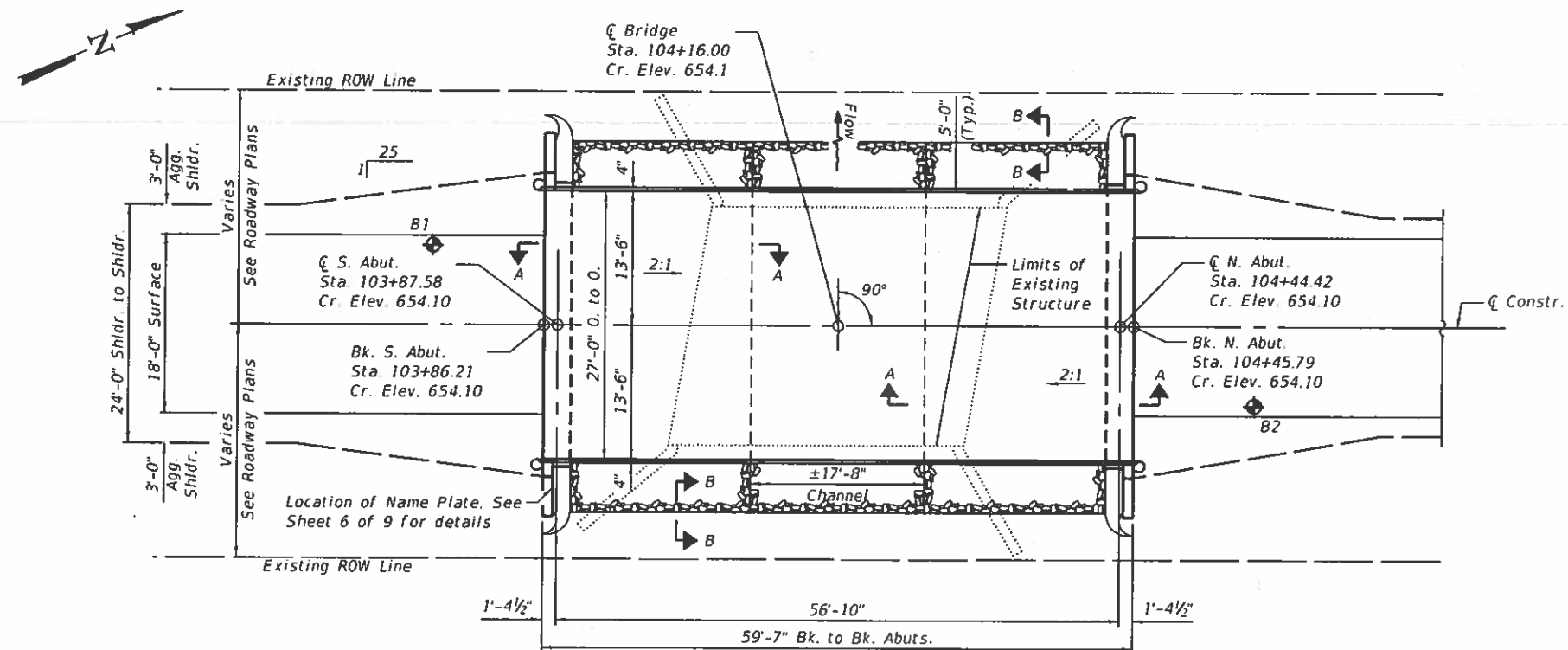
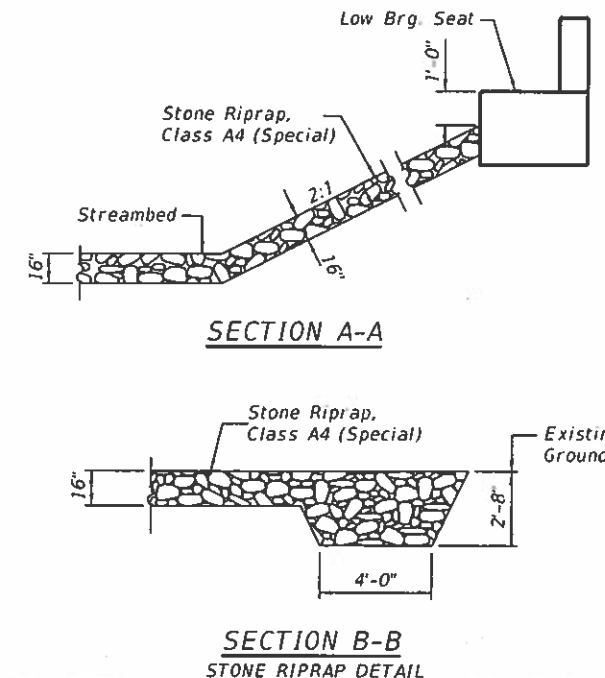
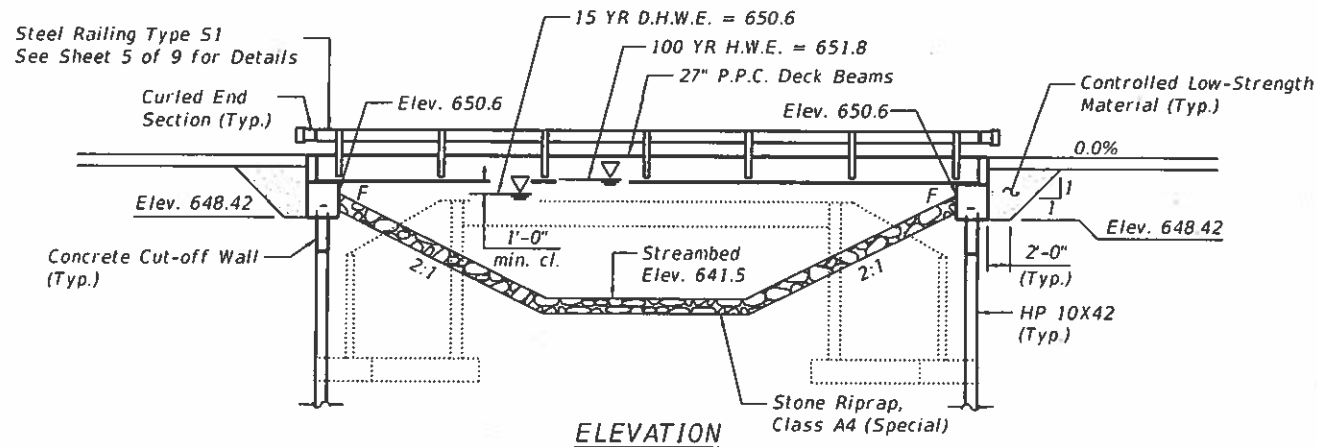
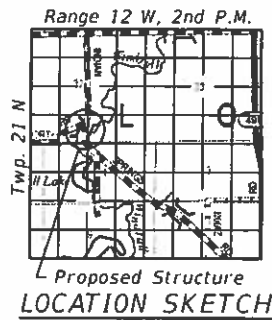
QUANTITIES FOR CONCRETE PIPES	
INSIDE DIAMETER OF PIPE	ESTIMATED CLASS SI CONCRETE REQUIRED
INCH (mm)	20" (500 mm) WIDTH CU. YD. (m ³)
4" (100)	0.14 (0.11)
6" (150)	0.16 (0.12)
8" (200)	0.19 (0.14)
10" (250)	0.22 (0.17)
12" (300)	0.25 (0.19)
15" (375)	0.30 (0.23)
18" (450)	0.35 (0.27)
24" (600)	0.45 (0.35)
30" (750)	0.57 (0.43)
36" (900)	0.69 (0.53)
42" (1050)	0.83 (0.63)
48" (1200)	0.97 (0.74)
54" (1350)	1.12 (0.86)
60" (1500)	1.28 (0.98)

QUANTITIES FOR METAL PIPES	
INSIDE DIAMETER OF PIPE	ESTIMATED CLASS SI CONCRETE REQUIRED
INCH (mm)	20" (500 mm) WIDTH CU. YD. (m ³)
4" (100)	0.12 (0.09)
6" (150)	0.14 (0.11)
8" (200)	0.16 (0.12)
10" (250)	0.19 (0.14)
12" (300)	0.21 (0.16)
15" (375)	0.25 (0.19)
18" (450)	0.29 (0.22)
24" (600)	0.38 (0.29)
30" (750)	0.47 (0.36)
36" (900)	0.59 (0.45)
42" (1050)	0.69 (0.53)
48" (1200)	0.81 (0.62)
54" (1350)	0.93 (0.71)
60" (1500)	1.05 (0.81)

Benchmark: #2 Chisled square on NE wingwall, 13.6' RT, Sta. 104+29, Elev. 650.71

Existing Structure: S.N. 092-3143 is a single span PPC Deck Beam bridge on closed concrete abutments with spread footings. The existing structure is 24.3' O.-O. deck and 27.8' Fc.-Fc. abutments. The structure is skewed 10 degrees left forward.

No Salvage



GENERAL NOTES

Reinforcement bars designated (E) shall be epoxy coated.
 Layout of slope protection system may be varied in the field to suit ground conditions as directed by the Engineer.
 Controlled Low Strength Material shall be placed behind the abutments as shown from the bottom of the abutment cap to the top of the subgrade. This material shall be placed throughout the width of the abutment and shall be capped with earth at the ends of the excavation near the wingwalls.

TOTAL BILL OF MATERIAL

ITEM	UNIT	SUPER	SUB	TOTAL
Stone Riprap, Class A4 (Special)	Ton		240	240
Structure Excavation	Cu. Yd.		49	49
Concrete Structures	Cu. Yd.		26.2	26.2
Precast Prestressed Concrete Deck Beams (27" Depth)	Sq. Ft.	1566		1566
Reinforcement Bars, Epoxy Coated	Pound		3330	3330
Steel Railing, Type S1	Foot	116		116
Furnishing Steel Piles, HP 10x42	Foot		360	360
Driving Piles	Foot		360	360
Test Pile Steel HP 10x42	Each		2	2
Name Plates	Each		1	1
Concrete Cut-off Wall	Cu. Yd.		6.3	6.3
Controlled Low-Strength Material	Cu. Yd.		40.4	40.4
Removal Of Existing Structures	Each		1	1

DESIGN SCOUR ELEVATION TABLE

Design Scour Elevation (ft.)	S. Abut.	N. Abut.
	648.42	648.42

WATERWAY INFORMATION

Drainage Area	12.6 Sq. Mi.
Required Opening (15 Yr.)	321 Sq. Ft.
Existing Opening (15 Yr.)	162 Sq. Ft.
Approach Opening (15 Yr.)	55 Sq. Ft.
Proposed Opening (15 Yr.)	321 Sq. Ft.
Required Opening (100 Yr.)	321 Sq. Ft.
Existing Opening (100 Yr.)	162 Sq. Ft.
Approach Opening (100 Yr.)	330 Sq. Ft.
Proposed Opening (100 Yr.)	321 Sq. Ft.
Design Discharge (15 Yr.)	1180 C.F.S.
Created Head (15 Yr.)	0.1 Ft.
100 Year Discharge	1870 C.F.S.
100 Yr. Created Head	0.6 Ft.

DESIGN SPECIFICATIONS

2017 AASHTO LRFD Bridge Design Specification, 8th Edition

LOADING HL-93

Allow 50#/Sq. Ft. for Future Wearing Surface

DESIGN STRESSES

FIELD UNITS (New Construction)

$f_c = 3,500$ psi (Substructure)

$f_y = 60,000$ psi (Reinforcement)

PRECAST PRESTRESSES UNITS

$f_c = 6,000$ psi

$f_{ci} = 5,000$ psi

$f_{pu} = 270,000$ psi ($1/2$ " \emptyset low lax. strands)

$f_{pbt} = 201,960$ psi ($1/2$ " \emptyset low lax. strands)

$f_y = 60,000$ psi (Reinforcement)

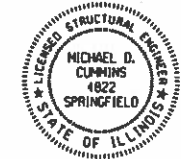
WINDFALL CREEK
 BUILT 20__ BY
 BLOUNT ROAD DISTRICT
 VERMILION COUNTY
 SEC. 17-01133-00-BR
 STATION 104+16.00
 STR. NO. 092-3537 LOADING HL-93

NAME PLATE

See Std. 515001

"I certify that to the best of my knowledge, information and belief, this bridge design is structurally adequate for the design loading shown on the plans. The design is an economical one for the style of structure and complies with requirements of the current 'AASHTO Bridge Design Specifications'."

4-15-2020
 ILLINOIS STRUCTURAL NO. 4822 (Expires 11/30/20)



GENERAL PLAN AND ELEVATION
 TR 186 OVER WINDFALL CREEK
 SECTION 17-01133-00-BR
 VERMILION COUNTY
 STA 104+16.00
 STRUCTURE NO. 092-3537



JOB #	2601
FILE NAME	2601_0923537_01_GPE.dgn
PLOT DATE	4/15/2020

DESIGNED	JGY	REVISED	-
CHECKED	AAN	REVISED	-
DRAWN	SJS	REVISED	-
CHECKED	MDC	REVISED	-

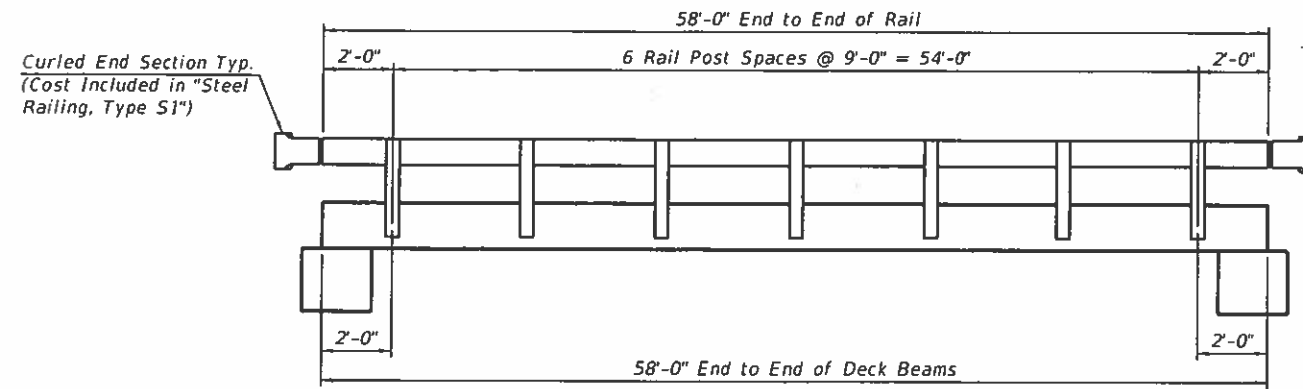
VERMILION COUNTY
 BLOUNT ROAD DISTRICT
 TR 186 IMPROVEMENTS

GENERAL PLAN AND ELEVATION
 STRUCTURE NO. 092-3537

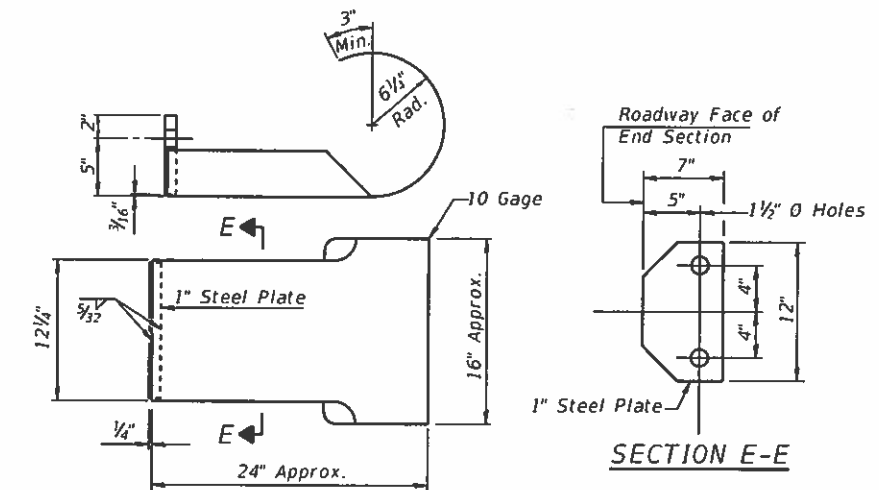
TR	SECTION	COUNTY	TOTAL SHEETS	SHEET NO.
186	17-01133-00-BR	VERMILION	22	10

CONTRACT NO. 91593

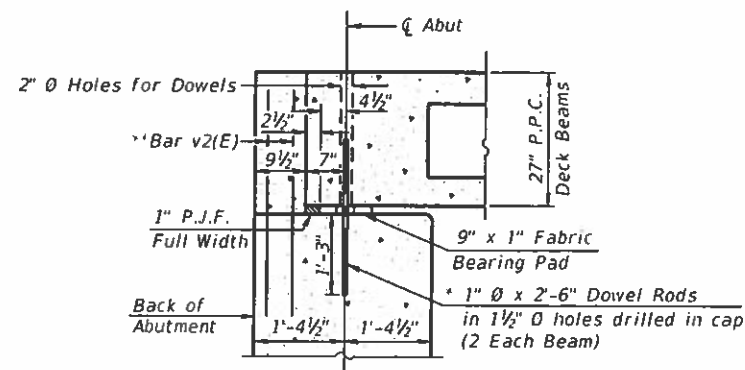
MODEL: Definit FILE NAME: \\rvc01\job\2601_Vermilion Co. Blount_Twp\CADD\Sheet\Bridges\2601_0923537_01_GPE.dgn



RAIL ELEVATION - STEEL RAILING, TYPE S1



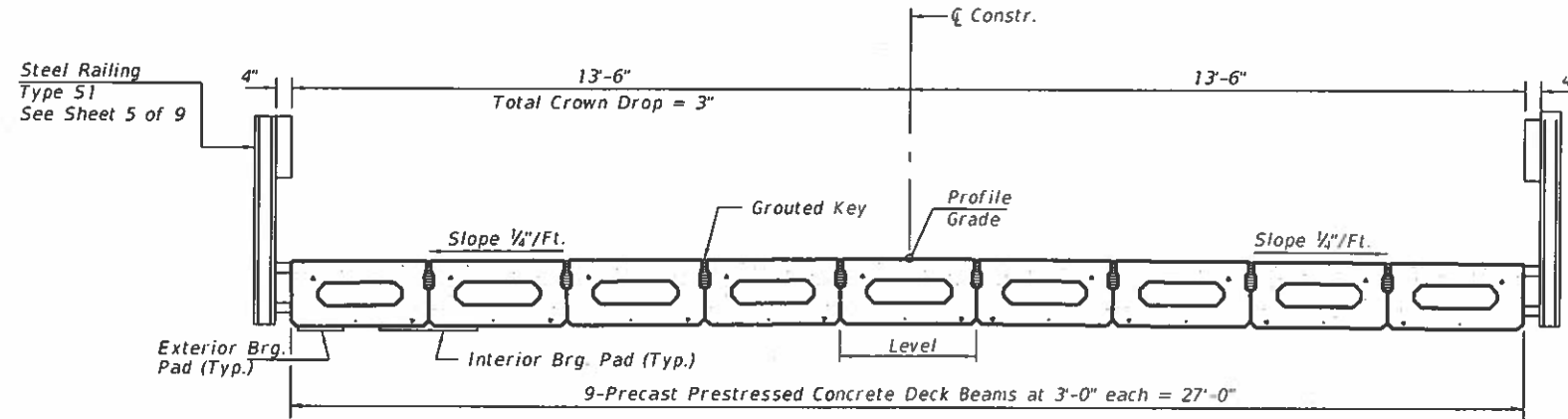
CURLED END SECTION DETAILS
(4 Required)



SECTION THRU ABUT.
(@ Rt. Δ's to Abut)

* After beams have been erected, holes shall be drilled into substructure and anchor dowels placed. Dowel holes shall be filled with non-shrink grout to top of beam and allowed to cure min. 24 hrs. prior to grouting the shear keys.

** See Sheet 6 of 9 for v2(E) bar



CROSS SECTION

Notes:
See Sheet 3 & 4 of 9 for Superstructure.
See Sheet 5 of 9 for Steel Railing, Type S1.

MODEL: Detail
FILE NAME: 2601_0923537_02_SuperDetails.dgn

CEC Cummins
Engineering
Corporation
Civil and Structural Engineering

JOB # 2601
FILE NAME 2601_0923537_02_SuperDetails.dgn
PLOT DATE 4/14/2020

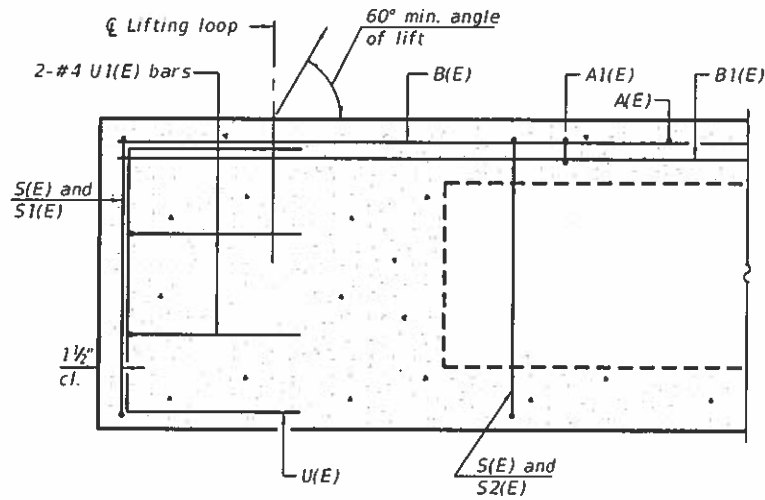
DESIGNED - JGY	REVISED -
CHECKED - AAN	REVISED -
DRAWN - SJS	REVISED -
CHECKED - MOC	REVISED -

**VERMILION COUNTY
BLOUNT ROAD DISTRICT
TR 186 IMPROVEMENTS**

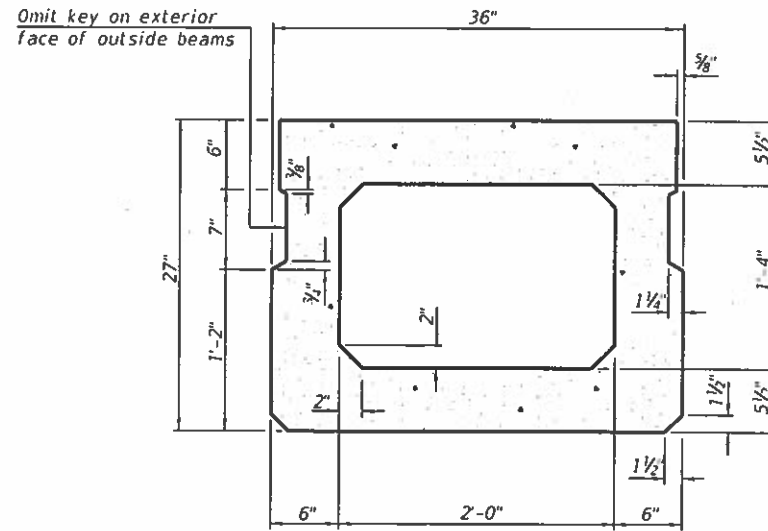
**SUPERSTRUCTURE DETAILS
STRUCTURE NO. 092-3537**

SHEET 2 OF 9 SHEETS

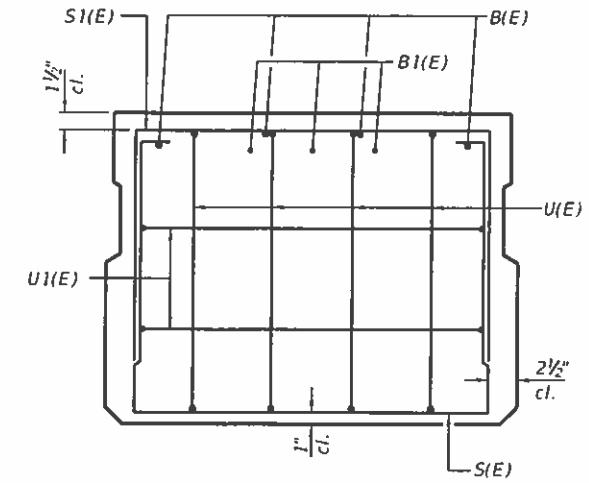
TR	SECTION	COUNTY	TOTAL SHEETS	SHEET NO.
186	17-01133-00-BR	VERMILION	22	11
CONTRACT NO. 91593				
ILLINOIS FED. AID PROJECT				



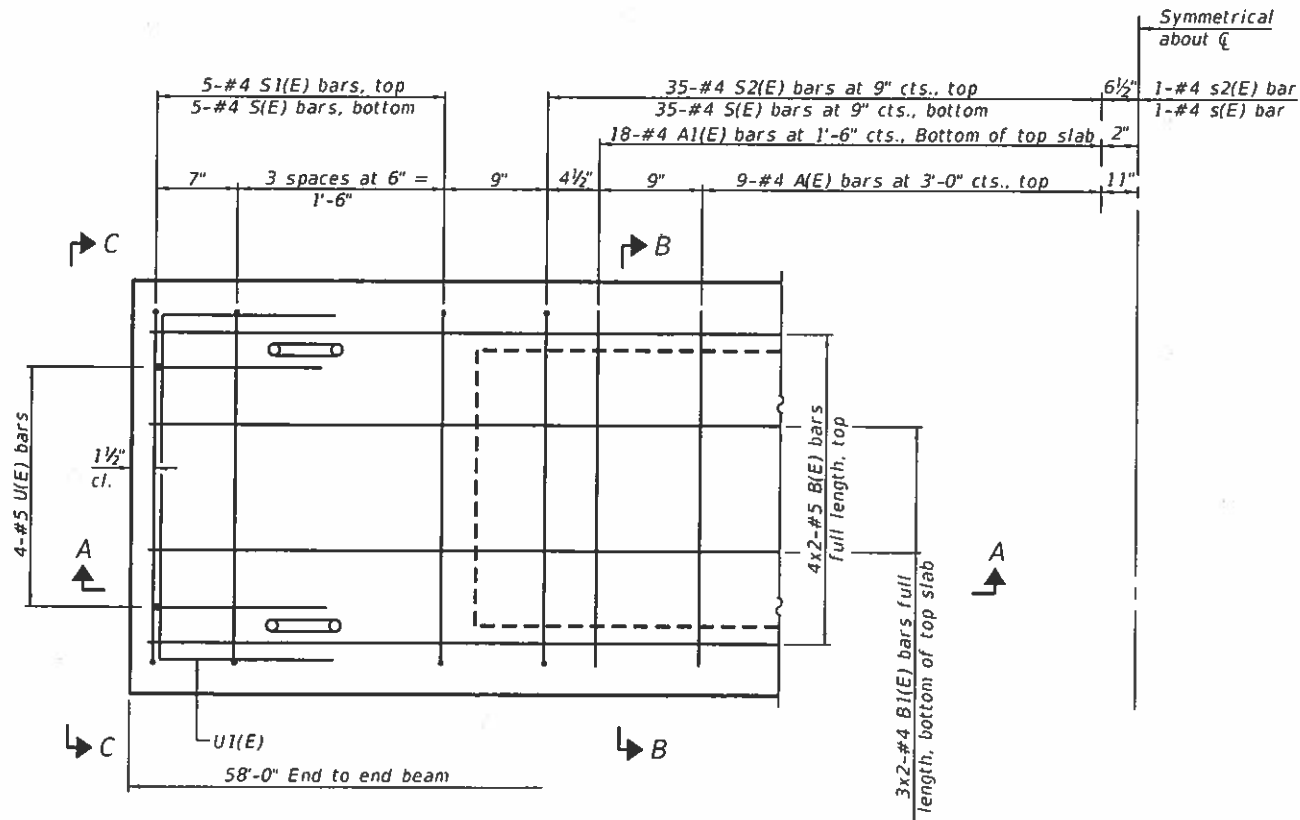
SECTION A-A



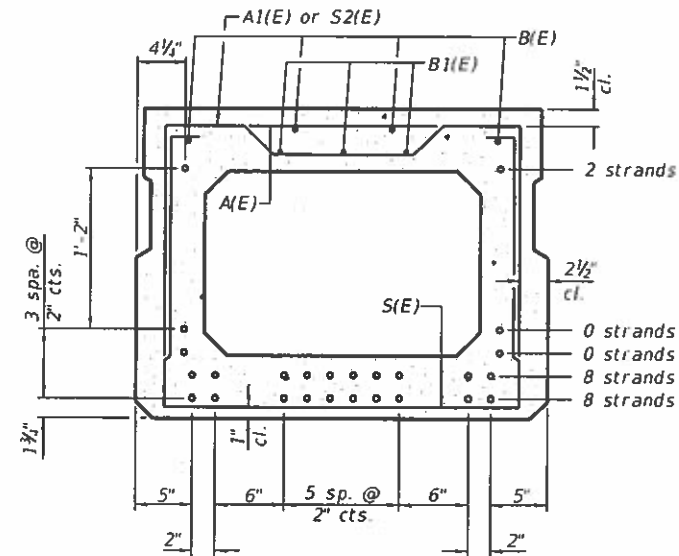
SECTION B-B
(Showing dimensions)



VIEW C-C



PLAN VIEW



SECTION B-B
(Showing reinforcement and permissible strand locations)
Note: Place the number of strands specified in each row symmetrically about the centerline of beam in the permissible strand locations shown.

BAR LIST
ONE BEAM ONLY
(For information only)

Bar	No.	Size	Length	Shape
A(E)	18	#4	2'-7"	—
A1(E)	36	#4	2'-10"	~
B(E)	8	#5	30'-2"	—
B1(E)	6	#4	30'-2"	—
S(E)	81	#4	7'-5"	⌋
S1(E)	10	#4	5'-11"	⌋
S2(E)	71	#4	6'-2"	⌋
U(E)	8	#5	4'-6"	⌋
U1(E)	4	#4	5'-0"	⌋

Note:
See sheet 4 of 9 for additional details and Bill of Material.

Note: Spacing of S(E) and S2(E) bars may be adjusted up to 4" in the immediate area of the transverse tie diaphragms to miss the block outs for the transverse ties.

MINIMUM BAR LAP

#4 bar = 1'-11"
#5 bar = 2'-6"

MODEL: Detail
FILE NAME: 2601_0923537_3-4_Super.dgn

PD-2736-0 2-17-2017

CEC Cummins
Engineering
Corporation
Civil and Structural Engineering

NO.	DATE	DESIGNED	CHECKED	DRAWN	CHECKED	REVISION
2601		JGY	AAN	SJS	MDC	
2601_0923537_3-4_Super.dgn						
4/14/2020						

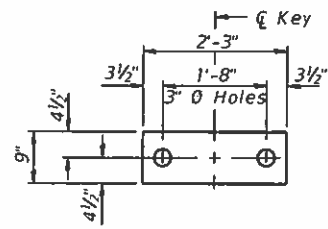
VERMILION COUNTY
BLOUNT ROAD DISTRICT
TR 186 IMPROVEMENTS

27" x 36" PPC DECK BEAM
STRUCTURE NO. 092-3537

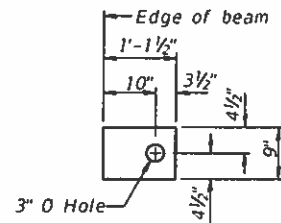
SHEET 3 OF 9 SHEETS

TR	SECTION	COUNTY	TOTAL SHEETS	SHEET NO.
186	17-01133-00-BR	VERMILION	22	12

CONTRACT NO.

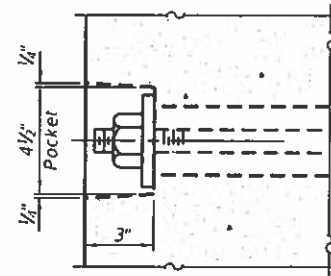


FABRIC BEARING PAD
(Interior)
(16 required)

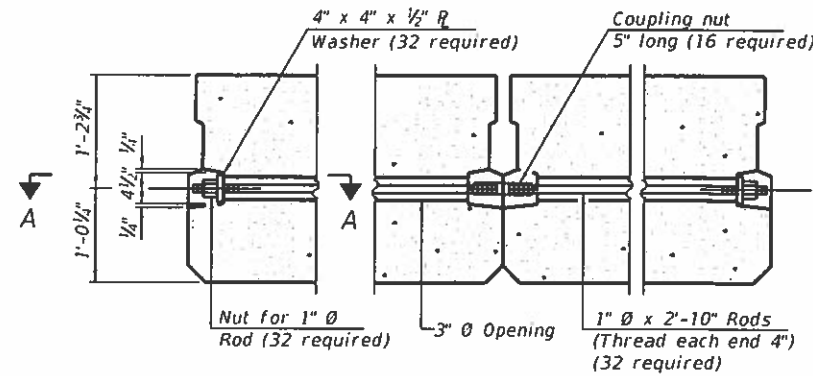


FABRIC BEARING PAD
(Exterior)
(4 required)

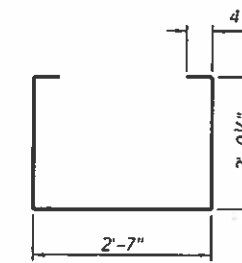
Notes:
All bearing pads shall be 1" thick.
Omit holes when using expansion bearings.
Expansion bearing pad shall be bonded to the substructure.



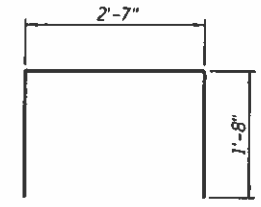
SECTION A-A



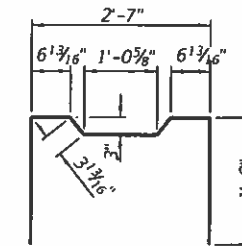
TYPICAL TRANSVERSE TIE ASSEMBLY



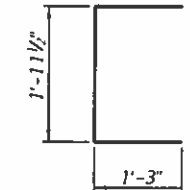
BAR S(E)



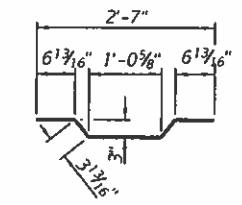
BAR S1(E)



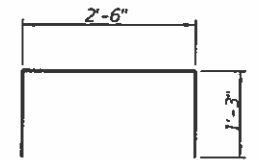
BAR S2(E)



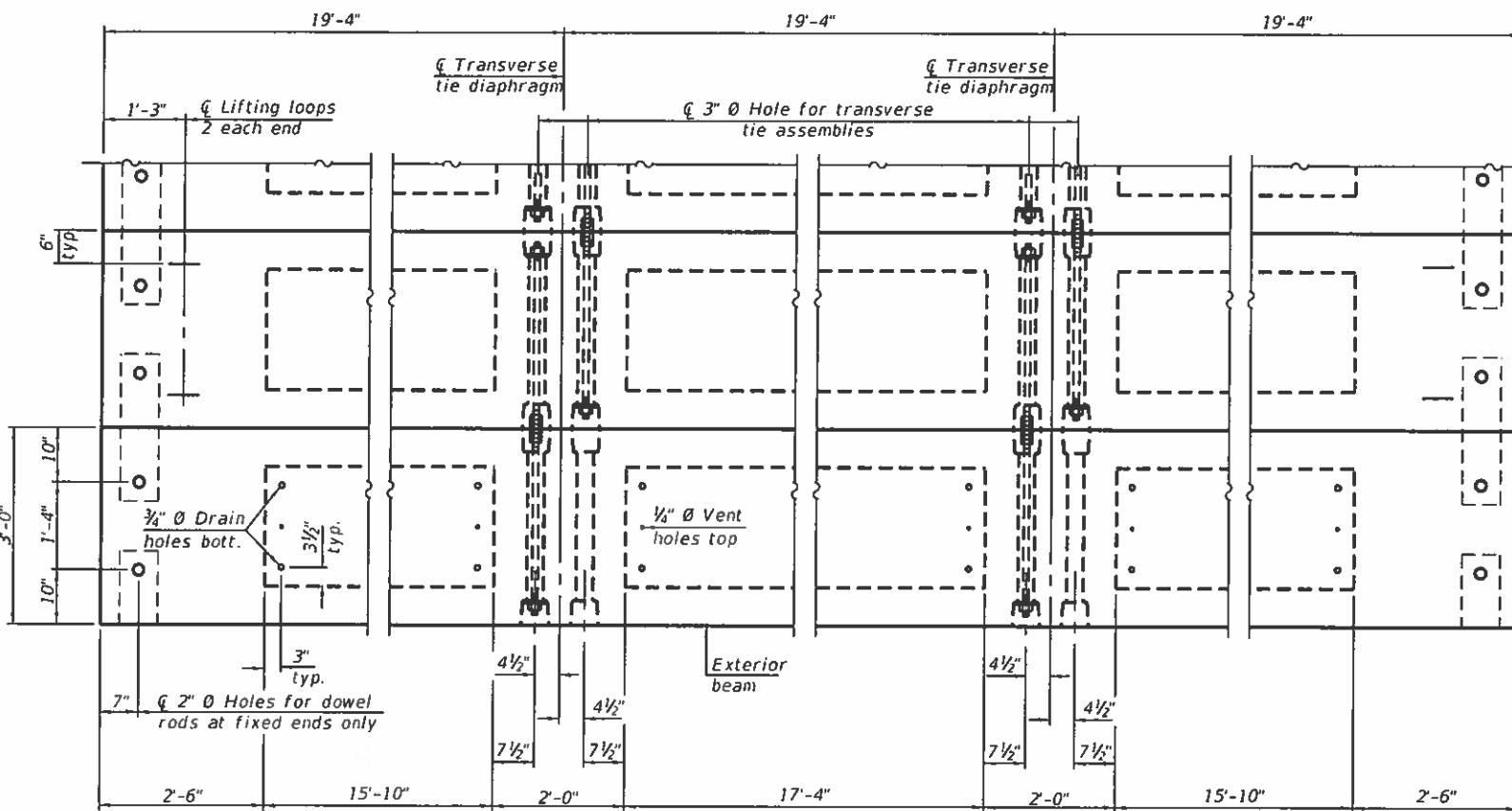
BAR U(E)



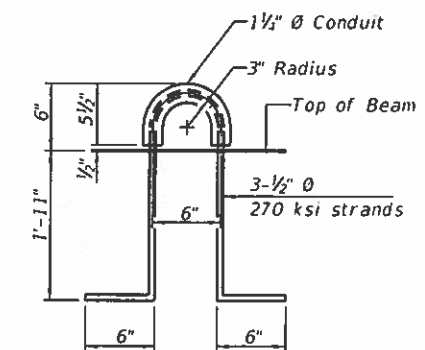
BAR A1(E)



BAR U1(E)



PLAN VIEW



LIFTING LOOP DETAIL

NOTES

Note: Connect beams in pairs with the transverse tie configuration shown.

Prestressing steel shall be uncoated high strength, low relaxation 7-wire strand, Grade 270. The nominal diameter shall be 1/2" and the nominal cross-sectional area shall be 0.153 sq. in.
The 1" diameter rods in the transverse tie assembly shall be tightened to a snug fit and the threads set. Pockets on exterior faces of bridge shall be filled with grout after transverse tie assembly is in place.
Two 1/8" fabric adjusting shims of the dimensions of the exterior bearing pad shall be provided for each bearing pad location.
A minimum 2 1/2" diameter lifting pin shall be used to engage the lifting loops during handling.
Corrosion Inhibitor, per Article 1020.05(b)(10) and 1021.07 of the Standard Specifications, shall be used in the concrete for precast prestressed concrete deck beams.
Compressive strength of prestressed concrete, f'c, shall be 6000 psi.
Compressive strength of prestressed concrete at release, f'ci, shall be 5000 psi.

BILL OF MATERIAL

Precast Prestressed Conc. Deck Bms. (27" depth)	Sq. Ft.	1566
---	---------	------

MODEL: Default
FILE NAME: 2601_0923537_3-4_Super.dgn

PD-2736-0D 2-17-2017

CEC Cummins Engineering Corporation
Civil and Structural Engineering

JOB #	2601
FILE NAME	2601_0923537_3-4_Super.dgn
PLT DATE	4/14/2020

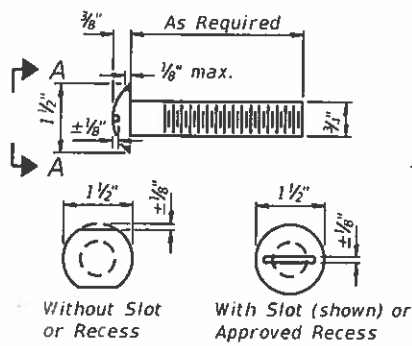
DESIGNED	JOY	REVISED	-
CHECKED	AAN	REVISED	-
DRAWN	SJS	REVISED	-
CHECKED	MDC	REVISED	-

**VERMILION COUNTY
BLOUNT ROAD DISTRICT
TR 186 IMPROVEMENTS**

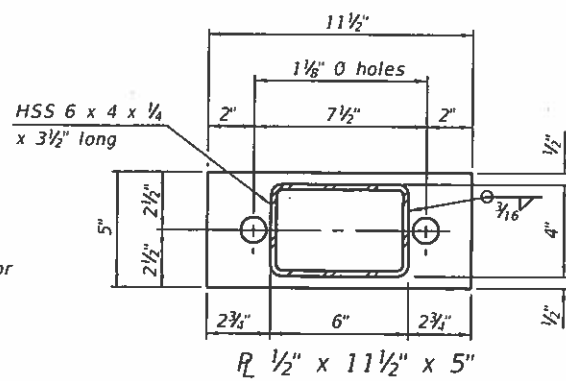
**27" x 36" PPC DECK BEAM DETAILS
STRUCTURE NO. 092-3537**

SHEET 4 OF 9 SHEETS

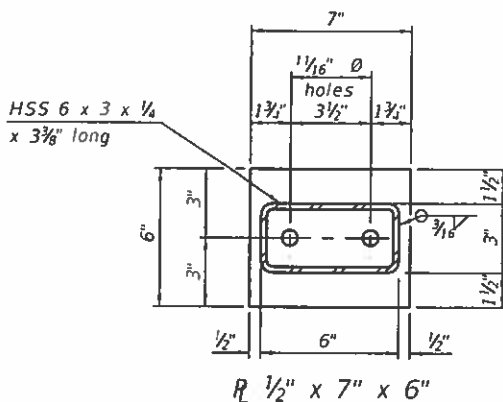
TR	SECTION	COUNTY	TOTAL SHEETS	SHEET NO.
186	17-01133-00-BR	VERMILION	22	13
CONTRACT NO. 91593				



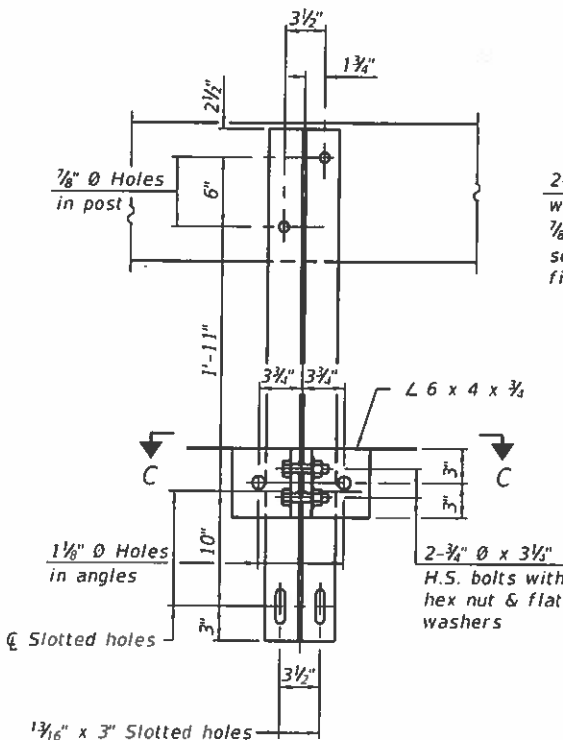
VIEW A-A
ROUND HEAD BOLT



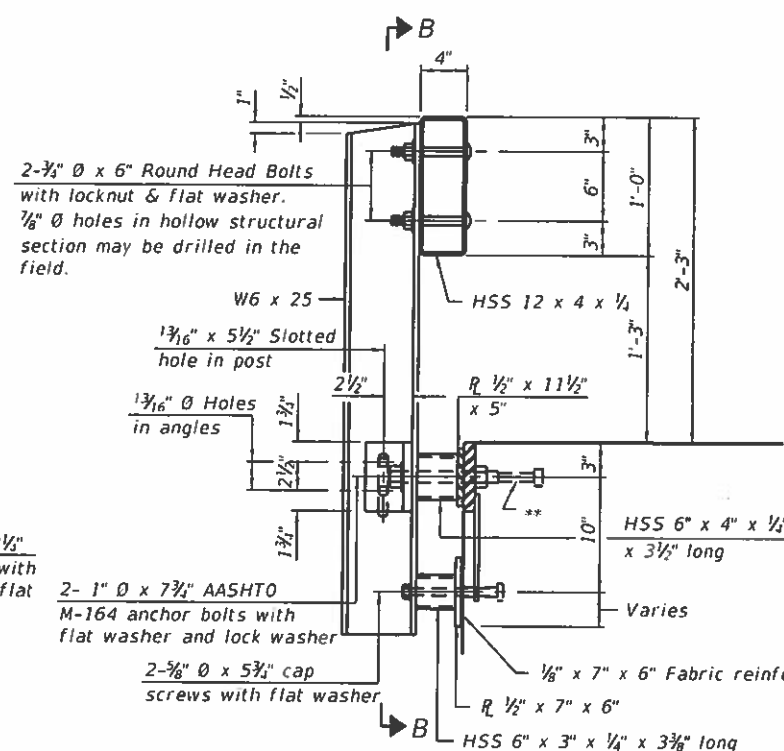
R 1/2" x 11 1/2" x 5"



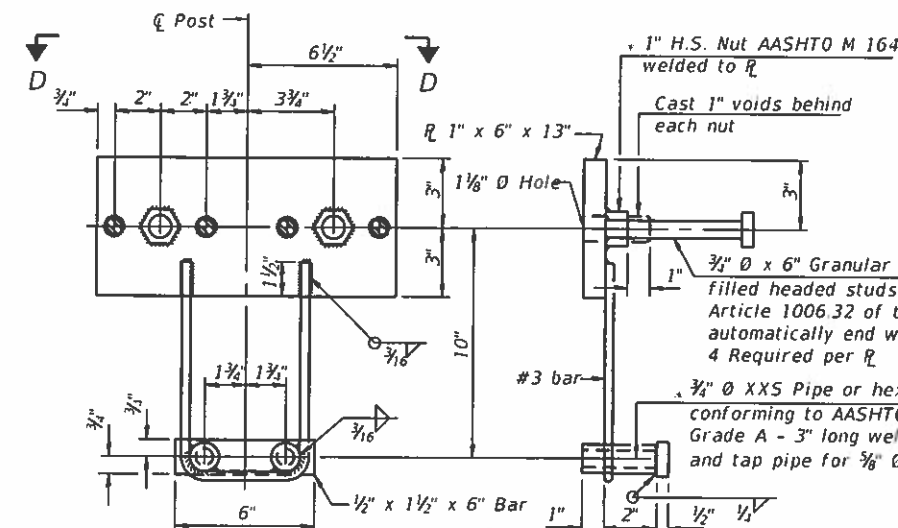
R 1/2" x 7" x 6"



SECTION C-C



SECTION AT RAILING POST



ANCHOR DEVICE

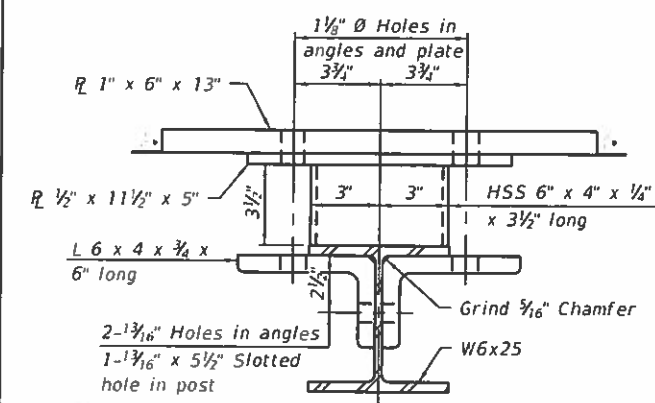
* Threaded areas shall be plugged or blocked off during casting of beam.

SPLICE DIMENSIONS

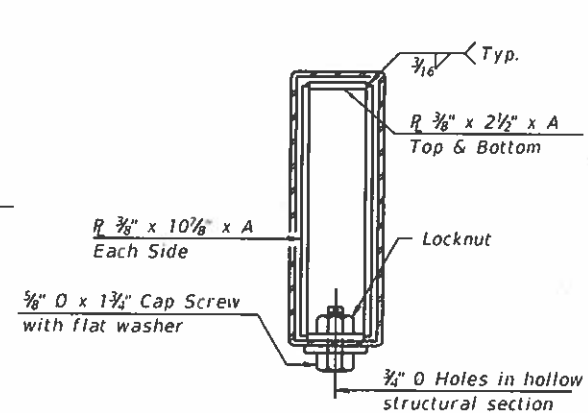
T	D	A	B	C	E
≤ 4"	2 1/2"	1'-8"	2"	4"	2 1/2"
> 4" ≤ 6 1/2"	3 3/4"	2'-0"	2 1/2"	5 1/2"	3 1/2"
> 6 1/2" ≤ 9"	5"	2'-4"	3 1/2"	6 1/2"	9"
> 9" ≤ 13"	7"	2'-10"	4 1/2"	8 1/2"	11"
Rail Splice	1/4"	1'-8"	2"	4"	

T = Total movement at expansion joint as shown on the design plans.

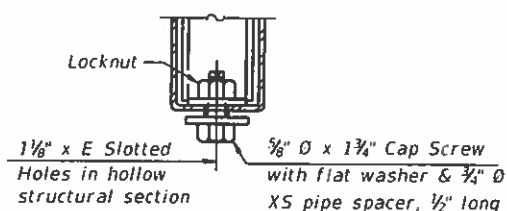
Notes:
For multi-span bridges, sufficient 1/2" x 6" x 1'-2" galvanized steel shims shall be provided to align rail between adjacent spans. Cost included with Steel Railing, Type S-1.
All steel rail elements shall be galvanized according to Article 509.05 of the Standard Specifications.



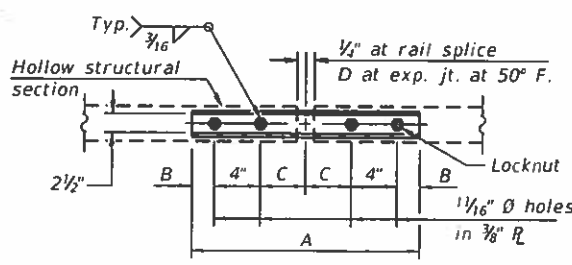
SECTION C-C



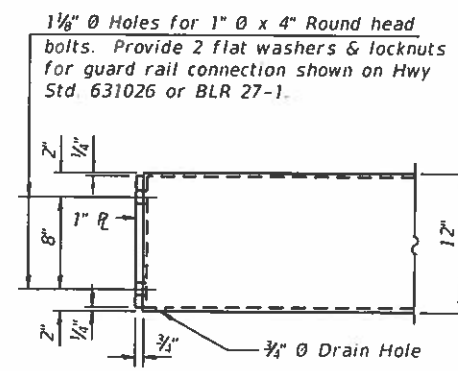
SECTIONS AT RAIL SPLICE



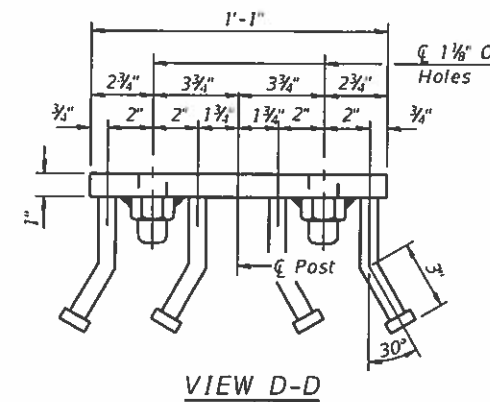
RAIL SPLICE CONNECTION AT EXPANSION JT.



PLAN-BOTT. SPLICE R TYPICAL



END OF RAIL DETAILS



VIEW D-D

BILL OF MATERIAL

Item	Unit	Quantity
Steel Railing, Type S-1	Foot	116

R-23A 2-17-2017 (10'-9" Maximum Post Spacing)

CEC Cummins Engineering Corporation
Civil and Structural Engineering

DESIGNED - JGY	CHECKED - AAM	DRAWN - SJS	CHECKED - MDC
REVISED -	REVISED -	REVISED -	REVISED -

VERMILION COUNTY
BLOUNT ROAD DISTRICT
TR 186 IMPROVEMENTS

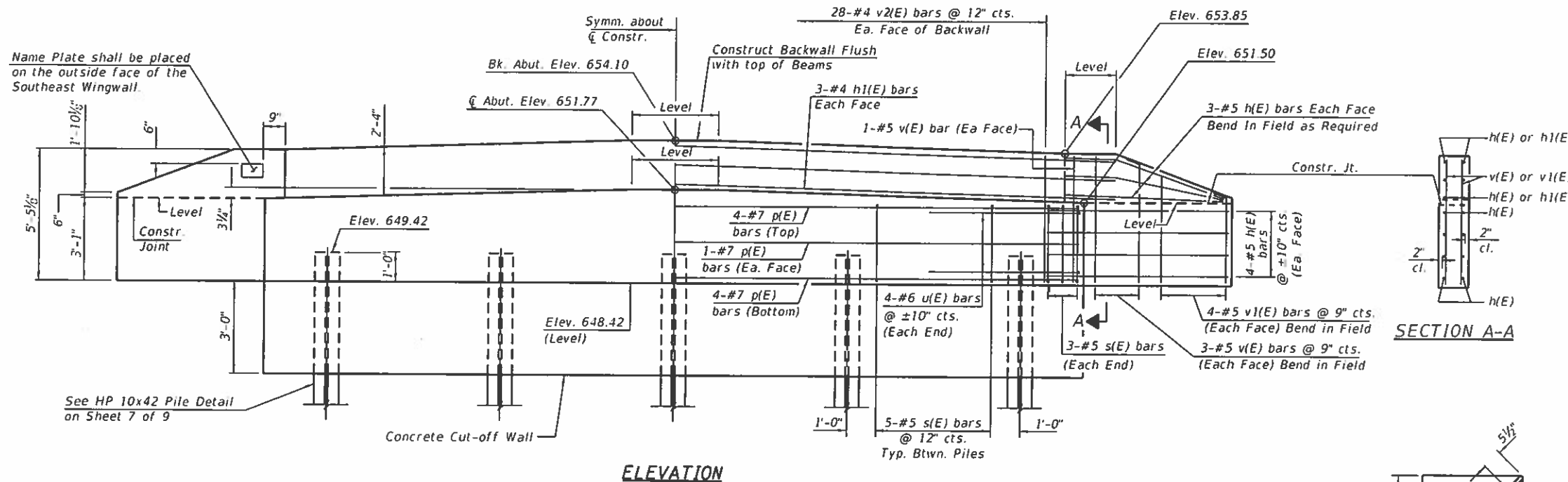
STEEL RAILING, TYPE S-1
STRUCTURE NO. 092-3537

TR	SECTION	COUNTY	TOTAL SHEETS	SHEET NO.
106	17-01133-00-BR	VERMILION	22	14
CONTRACT NO. 91593				

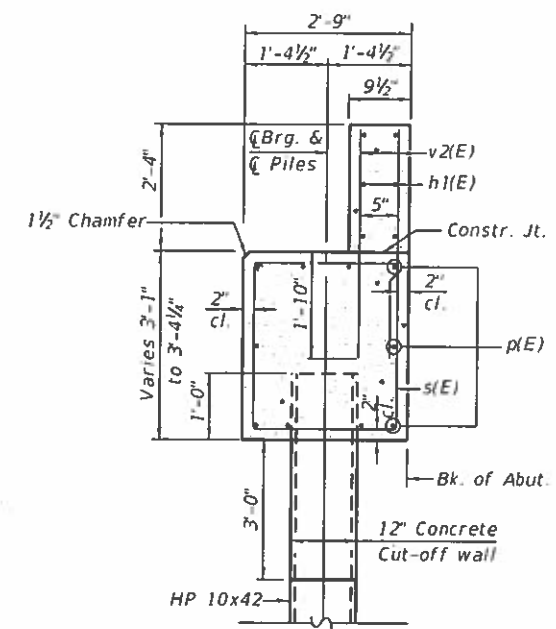
SHEET 5 OF 9 SHEETS

SCALE: AS SHOWN

Name Plate shall be placed on the outside face of the Southeast Wingwall.

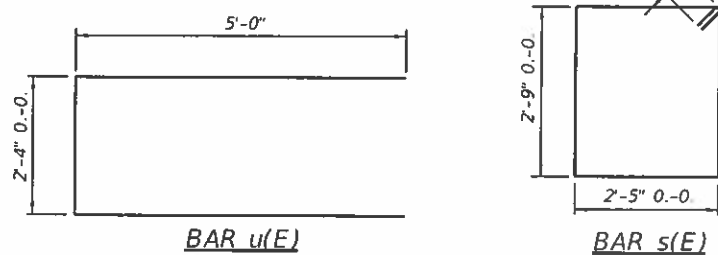
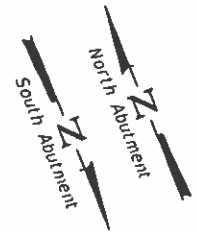


ELEVATION



SECTION THRU ABUTMENT

See HP 10x42 Pile Detail on Sheet 7 of 9

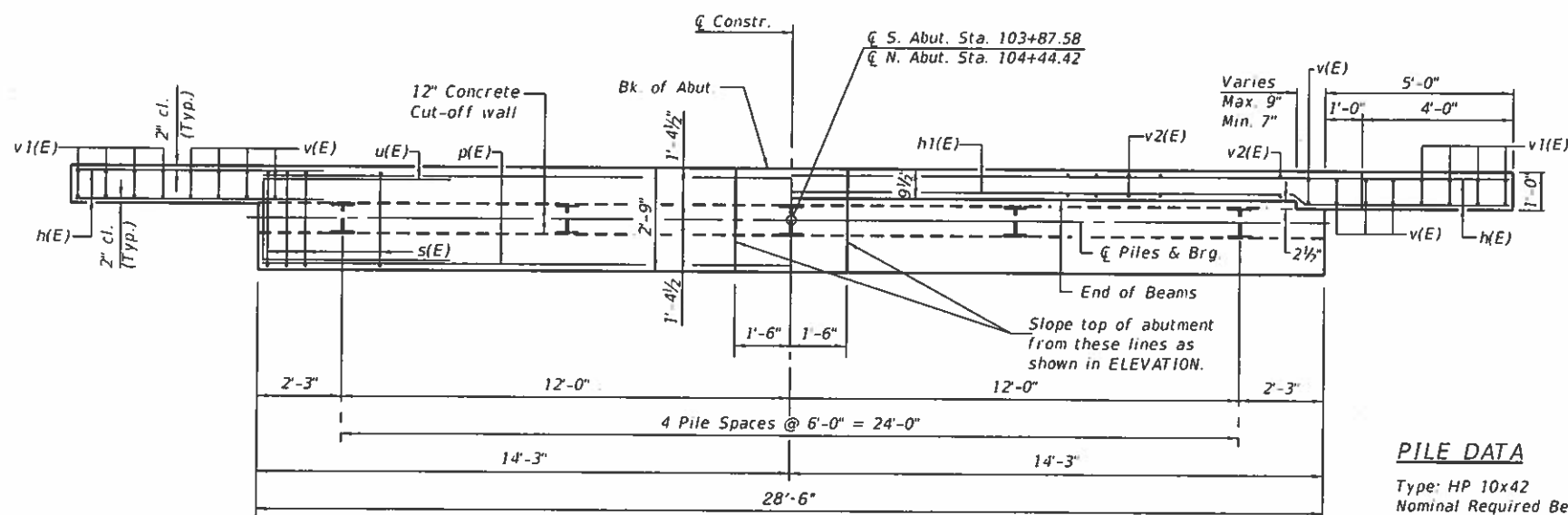


BAR u(E)

BAR s(E)

BILL OF MATERIAL
TWO ABUTMENTS

BAR	NO.	SIZE	LENGTH	SHAPE
h(E)	56	#5	7'-4"	—
h1(E)	12	#4	30'-6"	—
p(E)	20	#7	28'-2"	—
s(E)	52	#5	11'-3"	□
u(E)	16	#6	12'-4"	—
v(E)	32	#5	5'-0"	—
v1(E)	32	#5	3'-10"	—
v2(E)	112	#4	4'-0"	—
Concrete Structures			Cu. Yd.	26.2
Reinforcement Bars, Epoxy Coated			Pound	3330
Name Plates			Each	1
Furnishing Steel Piles HP 10x42			Foot	360
Driving Piles			Foot	360
Structure Excavation			Cu. Yd.	49
Test Pile Steel HP 10x42			Each	2
Concrete Cut-off wall			Cu. Yd.	6.3



PLAN

PILE DATA

Type: HP 10x42
 Nominal Required Bearing: 273 kips
 Factored Resistance Available: 150 kips
 No. Required: 10 piles*
 Estimated Length: 45 ft. @ S. Abut.
 45 ft. @ N. Abut.

Note:
 The Steel H-Piles shall be according to AASHTO M270 Grade 50.

* Includes one test pile to be driven in a permanent location at each Abutment, as directed by the Engineer, before ordering the remainder of the piles. The test pile shall be driven to 110 percent of the Nominal Required Bearing indicated in the pile data information.

Note:
 After beams are in place and dowel rods grouted, the backwall and the portions of the wingwalls above the construction joint shall be poured.

MODEL: Default
 FILE NAME: 2601_0923537_06_Abuts.dgn



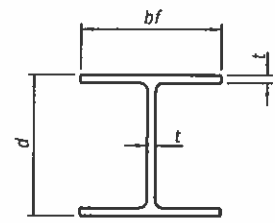
NO.	2601	DESIGNED	JGY	REVISED	-
FILE NAME	2601_0923537_06_Abuts.dgn	CHECKED	AAN	REVISED	-
DATE	4/14/2020	DRAWN	SJS	REVISED	-
		CHECKED	MDC	REVISED	-

VERMILION COUNTY
 BLOUNT ROAD DISTRICT
 TR 186 IMPROVEMENTS

ABUTMENTS
 STRUCTURE NO. 092-3537

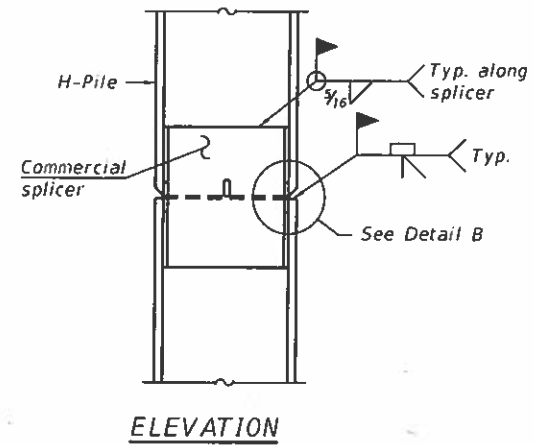
TR	SECTION	COUNTY	TOTAL SHEETS	SHEET NO.
186	17-01133-00-BR	VERMILION	22	15
CONTRACT NO. 91593				

SHEET 6 OF 9 SHEETS

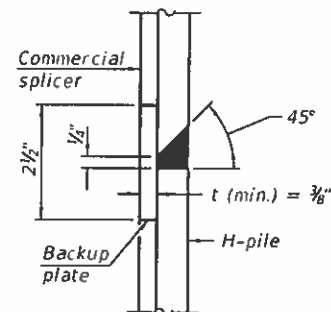


STEEL PILE TABLE

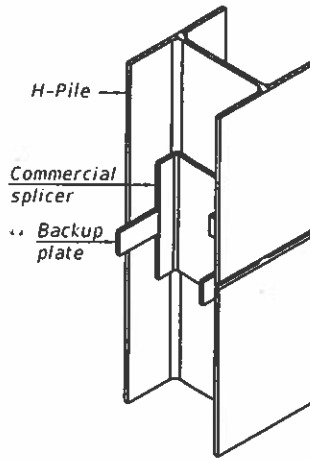
Designation	Depth d	Flange width bf	Web and Flange thickness t	Encasement diameter A
HP 14x117	14 1/4"	14 7/8"	1 3/16"	30"
x102	14"	14 3/4"	1 1/16"	30"
x89	13 7/8"	14 3/4"	5/8"	30"
x73	13 5/8"	14 3/8"	1/2"	30"
HP 12x84	12 1/4"	12 1/4"	1 1/16"	24"
x74	12 1/8"	12 1/4"	5/8"	24"
x63	12"	12 1/8"	1/2"	24"
x53	11 3/4"	12"	7/16"	24"
HP 10x57	10"	10 1/2"	9/16"	24"
x42	9 3/4"	10 1/8"	7/16"	24"
HP 8x36	8"	8 1/8"	7/16"	18"



ELEVATION

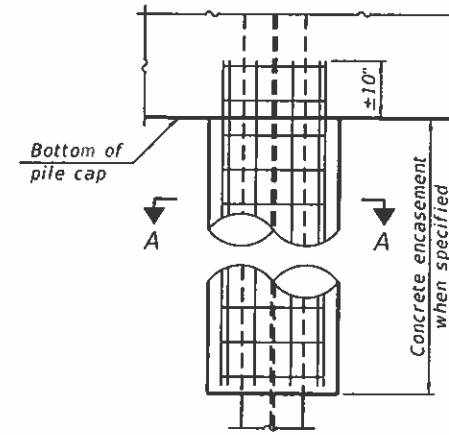


DETAIL "B"

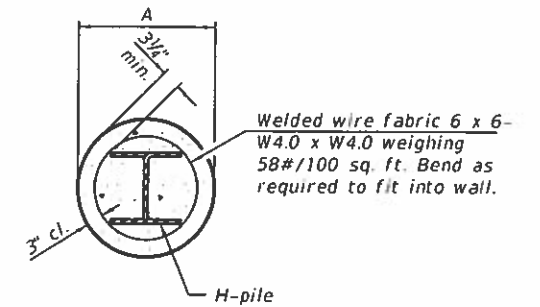


ISOMETRIC VIEW

WELDED COMMERCIAL SPLICE

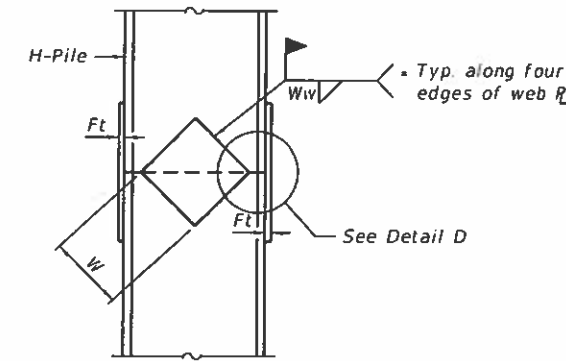


ELEVATION

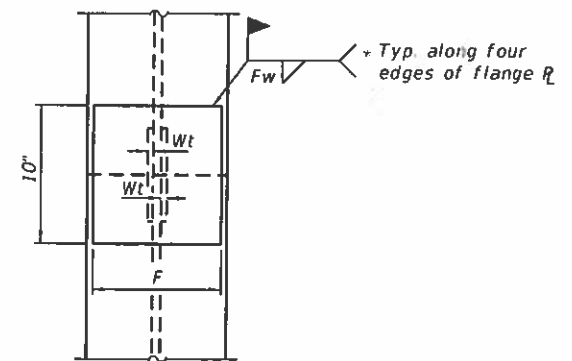


SECTION A-A

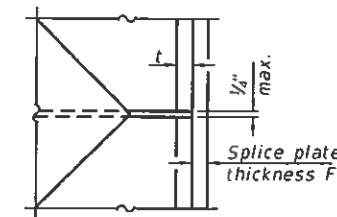
INDIVIDUAL PILE CONCRETE ENCASUREMENT
(Forms for encasement may be omitted when soil conditions permit).



ELEVATION



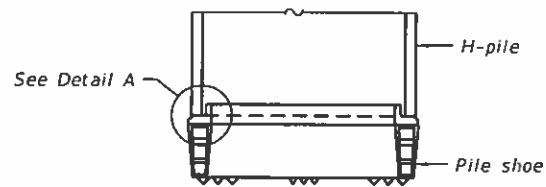
END VIEW



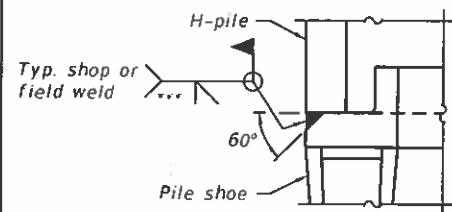
DETAIL D

Designation	F	Ft	Fw	W	Wt	Ww
HP 14x117	12 1/2"	1"	1/8"	7 3/4"	5/8"	1/2"
x102	12 1/2"	7/8"	3/4"	7 3/4"	5/8"	1/2"
x89	12 1/2"	3/4"	1 1/16"	7 3/4"	5/8"	1/2"
x73	12 1/2"	5/8"	9/16"	7 3/4"	5/8"	1/2"
HP 12x84	10"	7/8"	1 1/16"	6 1/2"	5/8"	1/2"
x74	10"	7/8"	1 1/16"	6 1/2"	5/8"	1/2"
x63	10"	5/8"	1/2"	6 1/2"	1/2"	3/8"
x53	10"	5/8"	1/2"	6 1/2"	1/2"	3/8"
HP 10x57	8"	3/4"	9/16"	5 1/4"	1/2"	3/8"
x42	8"	3/8"	9/16"	5 1/4"	1/2"	3/8"
HP 8x36	7"	5/8"	7/16"	4 1/4"	1/2"	3/8"

WELDED PLATE FIELD SPLICE

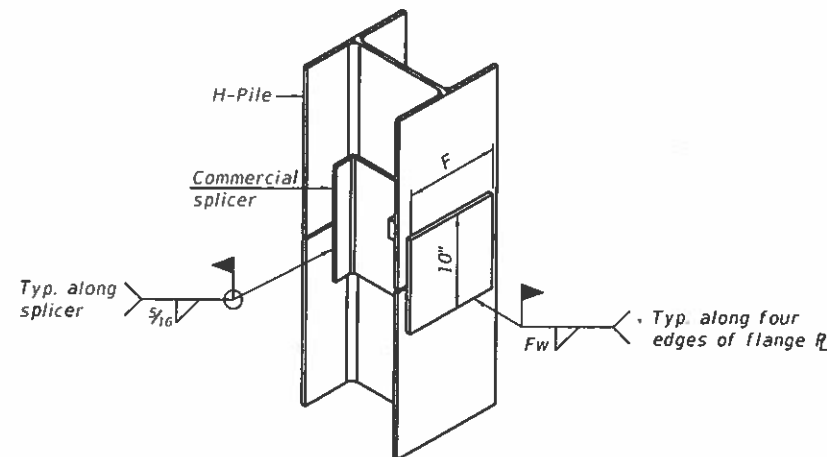


ELEVATION



DETAIL A

SHOE ATTACHMENT



ISOMETRIC VIEW

WELDED COMMERCIAL SPLICE ALTERNATE

- * Interrupt welds 1/4" from end of web and/or each flange.
- ** Remove portions of backup plates that extend outside the flanges.
- *** Weld size per pile shoe manufacturer (7/16" min.).

Note:
The steel H-piles shall be according to AASHTO M270 Grade 50.

MODEL: Default
FILE NAME: 2601_0923537_07_Piles.dgn

F-HP 8-11-2017

CEC Cummins Engineering Corporation
Civil and Structural Engineering

DESIGNED	JGY	REVISION	
CHECKED	AAN	REVISION	
DRAWN	SJS	REVISION	
CHECKED	MDC	REVISION	

VERMILION COUNTY
BLOUNT ROAD DISTRICT
TR 186 IMPROVEMENTS

HP PILE DETAILS
STRUCTURE NO. 092-3537

SHEET 7 OF 9 SHEETS

TR	SECTION	COUNTY	TOTAL SHEETS	SHEET NO.
186	17-01133-00-BR	VERMILION	22	16
CONTRACT NO. 91593				

Bridge Foundation Boring Log

Project: H-19198 Bridge TR 186 over Windfall Creek Date: 9/30/2019
 Section: 17-01133-00-BR Station 104+16
 Structure: 092-3143 Bored by: J. Carter
 County: Vermilion Checked By: T. Holcomb

Boring No. 2 Station: 104+58 Offset: 8' RT	Elevation	N	Qu tsf	w %	Surface Water Elev.	Ground Water Elev. During Drilling 621.8 Upon Completion 633.3	Elevation	N	Qu tsf	w %	
Ground Surface 650.3 0											
1" A-3 Surface											
Brown Silty CLAY (A-6) with gravel											
Dark Gray Sandy CLAY (A-6)											
		9	3.8B	13			-25	22	5.8B	8	
646.3											
Gray Mottled Brown Silty CLAY (A-6) with gravel											
		3	1.5B	17			19	4.5S	8		
		9	2.5B	12			18	5.5B	10		
641.8											
Gray Silty CLAY (A-6) with gravel											
		9	2.9B	12			25	6.0B	10		
		5	1.7B	14			23	4.4B	10		
636.8											
Brown SILT (A-4) with gravel											
		9	2.8B	16			21	2.7B	11		
		9	1.5B	17							
		9	3.4B	11							
		9	3.3B	11							

N = Standard Penetration Test Blows per foot to drive 2" O.D. Split Spoon Sampler 12" with a 140 lbs. hammer falling 30"
 Qu - Unconfined Compressive Strength in tons/sq.ft.
 w - Water Content - percentage of oven dry weight-%
 B = Bulge Failure
 S = Shear Failure
 E = Estimated Value
 P = Penetrometer

Bridge Foundation Boring Log

Project: H-19198 Bridge TR 186 over Windfall Creek Date: 9/30/2019
 Section: 17-01133-00-BR Station 104+16
 Structure: 092-3143 Bored by: J. Carter
 County: Vermilion Checked By: T. Holcomb

Boring No. 2 Station: 104+58 Offset: 8' RT	Elevation	N	Qu tsf	w %	Surface Water Elev.	Ground Water Elev. During Drilling 621.8 Upon Completion 633.3	Elevation	N	Qu tsf	w %	
silt with gravel (continued)											
							-45				
							-70				
							-50	23	4.1B	10	
							-75				
							-55	20	3.6B	11	
							-80				
							-60	22	--	11	
End of Boring @ -60.0'											
							-65				
							-85				

N = Standard Penetration Test Blows per foot to drive 2" O.D. Split Spoon Sampler 12" with a 140 lbs. hammer falling 30"
 Qu - Unconfined Compressive Strength in tons/sq.ft.
 w - Water Content - percentage of oven dry weight-%
 B = Bulge Failure
 S = Shear Failure
 E = Estimated Value
 P = Penetrometer

MODEL: Default
FILE NAME: 2601_0923537_8-9_Borings.dgn



NO. 2601	DESIGNED - JGY	REVISED -
REVISIONS - 2601_0923537_8-9_Borings.dgn	CHECKED - AAN	REVISED -
DATE 4/14/2020	DRAWN - SJS	REVISED -
	CHECKED - MDC	REVISED -

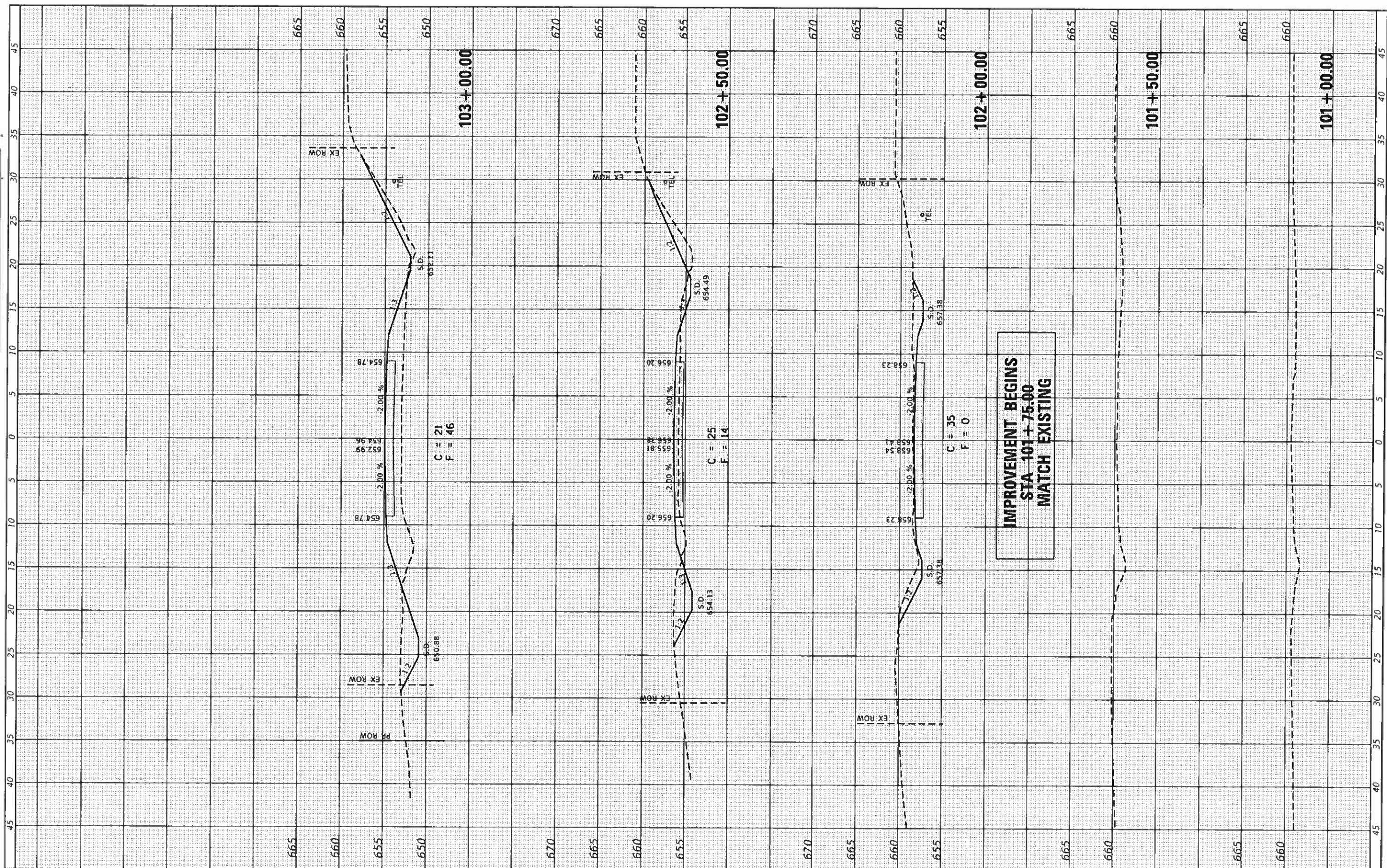
VERMILION COUNTY
 BLOUNT ROAD DISTRICT
 TR 186 IMPROVEMENTS

BORINGS
 STRUCTURE NO. 092-3537

TR	SECTION	COUNTY	TOTAL SHEETS	SHEET NO.
186	17-01133-00-BR	VERMILION	22	1E
CONTRACT NO. 91593				

DATE	
BY	
REVISIONS	
NO.	
DATE	
BY	
REVISIONS	
NO.	
DATE	
BY	
REVISIONS	
NO.	

DATE	
BY	
REVISIONS	
NO.	
DATE	
BY	
REVISIONS	
NO.	
DATE	
BY	
REVISIONS	
NO.	



CEC Cummins Engineering Corporation
Civil and Structural Engineering

JOB #	DESIGNED - TEC	REVISED -
FILE NAME = 2601-ahc-ssoc.dgn	DRAWN - CGP	REVISED -
PLOT SCALE = 1/8"=1'-0"	CHECKED - TEC	REVISED -
PLOT DATE = 4/14/2020	DATE = 3/28/2020	REVISED -

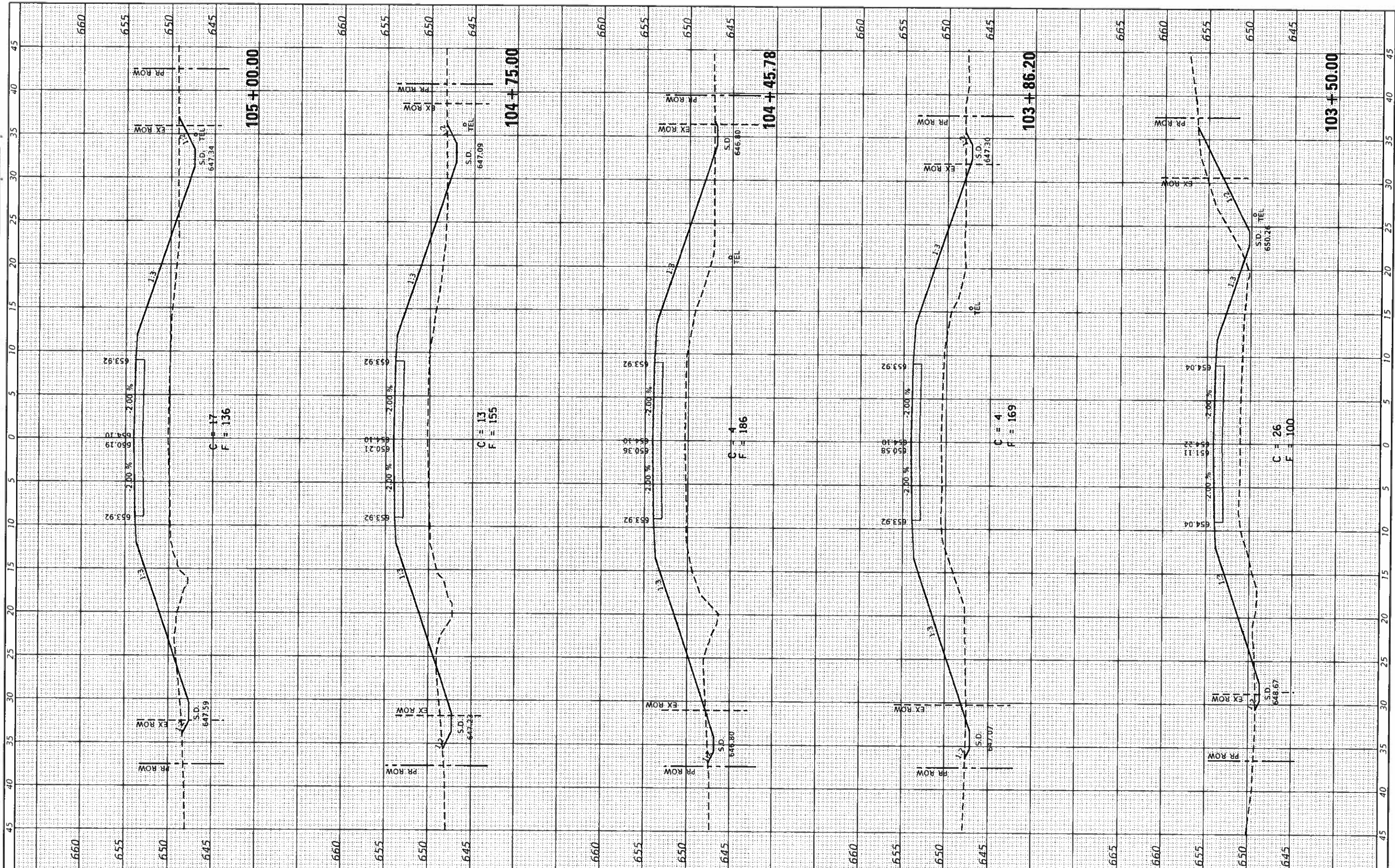
**VERMILION COUNTY
BLOUNT ROAD DISTRICT
TR 186 IMPROVEMENTS**

CROSS SECTIONS			
SCALE: 1"=5'	SHEET NO.	OF SHEETS	STA. 101+00.00 TO STA. 103+00.00

T.R. RTE.	SECTION	COUNTY	TOTAL SHEETS	SHEET NO.
186	17-01133-00-BR	VERMILION	22	19
CONTRACT NO. 91593				
FED. ROAD DIST. NO. ILLINOIS FED. AID PROJECT				

FINAL	DATE
CONTRACT	
SURVEY	
TEMPLATE	
NOTE BOOK	
AREAS	
AREAS DECIDED	

ORIGINAL	DATE
CONTRACT	
SURVEY	
TEMPLATE	
NOTE BOOK	
AREAS	
AREAS DECIDED	



CEC Cummins Engineering Corporation
Civil and Structural Engineering

JOB #
FILE NAME = 2501-shr-1860.dgn
PLOT SCALE = 10,00000' / in.
PLOT DATE = 4/14/2020

DESIGNED	- TEC
DRAWN	- CG
CHECKED	- TEC
DATE	- 3/28/2020
REVISED	-
REVISED	-
REVISED	-
REVISED	-

**VERMILION COUNTY
BLOUNT ROAD DISTRICT
TR 186 IMPROVEMENTS**

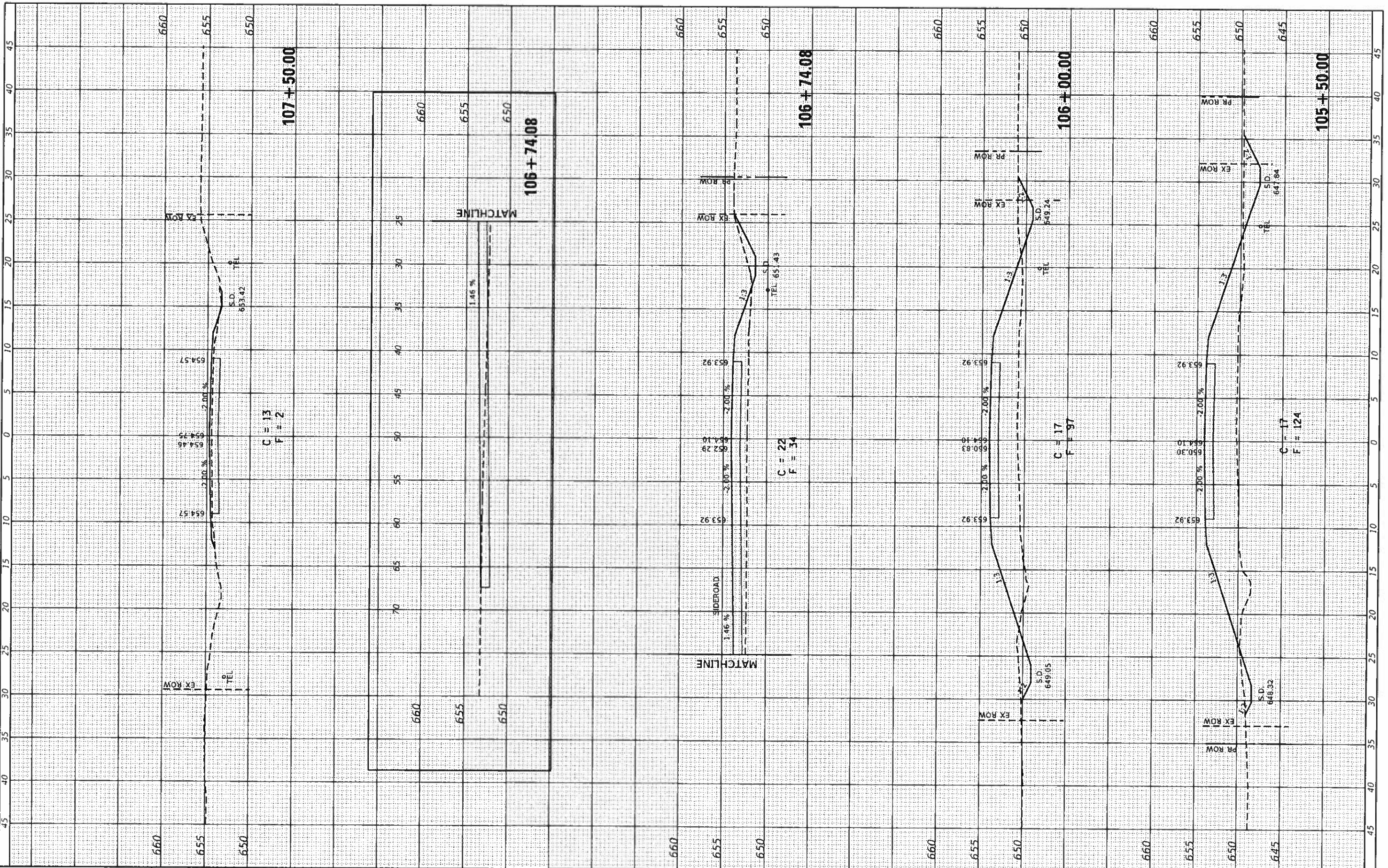
CROSS SECTIONS

SCALE: 1"=5' SHEET NO. OF SHEETS STA. 103+50.00 TO STA. 105+00.00

T.R. RTE.	SECTION	COUNTY	TOTAL SHEETS	SHEET NO.
186	17-01133-00-BR	VERMILION	22	20
FED. ROAD DIST. NO.		ILLINOIS FED. AID PROJECT		
CONTRACT NO. 91593				

DATE	
BY	
FINAL SURVEY	
PLOTTED	
NOTE BOOK	
AREA CHECKED	
NO.	

DATE	
BY	
ORIGINAL SURVEY	
PLOTTED	
NOTE BOOK	
AREA CHECKED	
NO.	



CEC Cummins Engineering Corporation
Civil and Structural Engineering

JOB #
FILE NAME = 2681-wht-ssc.dgn
PLOT SCALE = 1/8" = 10' / in.
PLOT DATE = 4/14/2020

DESIGNED	- TEC	REVISED	-
DRAWN	- CG	REVISED	-
CHECKED	- TEC	REVISED	-
DATE	- 3/28/2020	REVISED	-

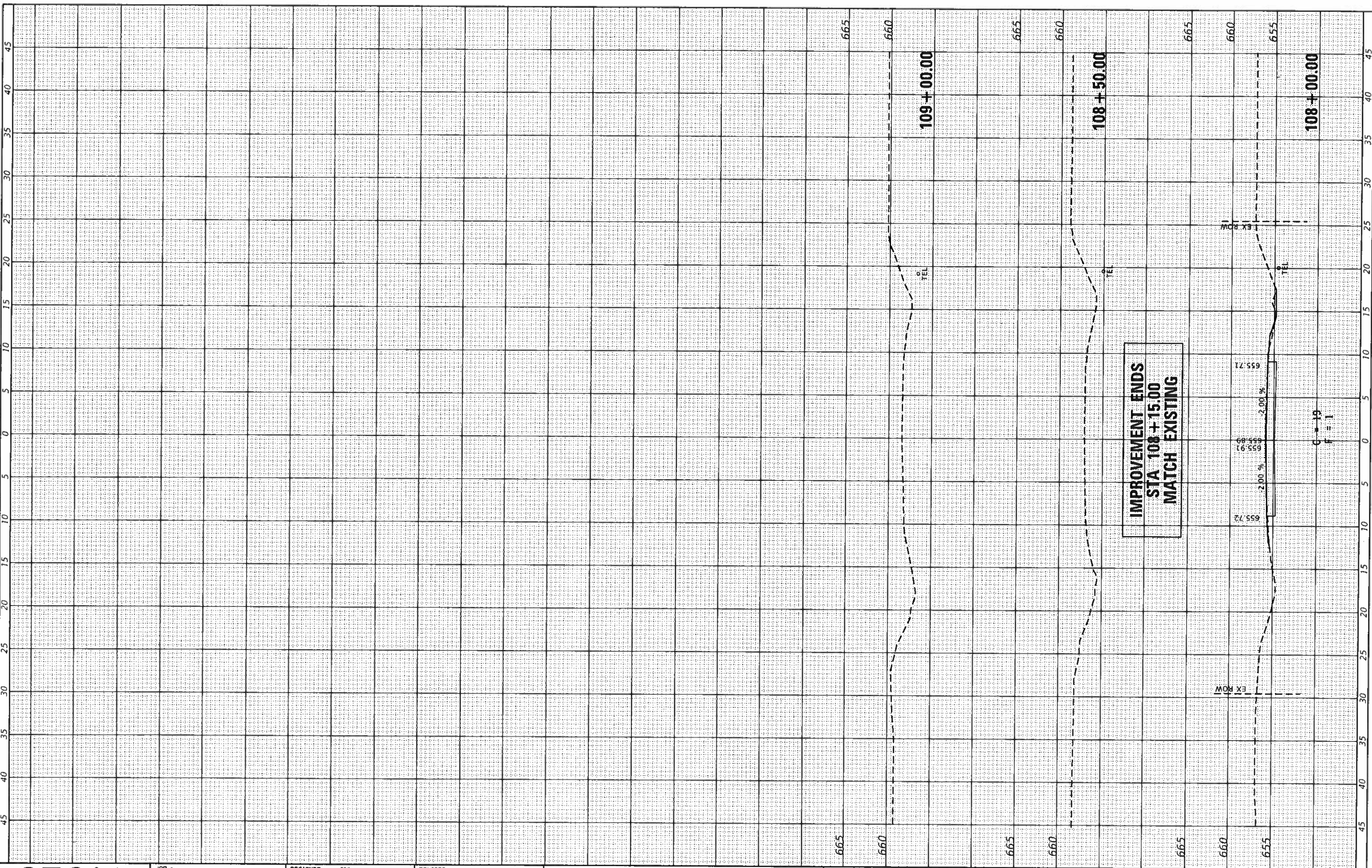
**VERMILION COUNTY
BLOUNT ROAD DISTRICT
TR 186 IMPROVEMENTS**

CROSS SECTIONS
SCALE: 1"=5'
SHEET NO. OF SHEETS STA. 105+50.00 TO STA. 107+50.00

T.P. RTE.	SECTION	COUNTY	TOTAL SHEETS	SHEET NO.
186	17-01133-00-BR	VERMILION	22	21
FED. ROAD DIST. NO.		ILLINOIS FED. AID PROJECT		CONTRACT NO. 91593

DATE	
BY	
DESIGNED	
DRAWN	
CHECKED	
DATE	
FILE NAME	
PLLOT SCALE	
PLLOT DATE	
DESIGNED	
DRAWN	
CHECKED	
DATE	

DATE	
BY	
DESIGNED	
DRAWN	
CHECKED	
DATE	
FILE NAME	
PLLOT SCALE	
PLLOT DATE	
DESIGNED	
DRAWN	
CHECKED	
DATE	



**IMPROVEMENT ENDS
STA 108+15.00
MATCH EXISTING**

C = 19
F = 1

CEC Cummins Engineering Corporation
Civil and Structural Engineering

JOB #	DESIGNED - TEC	REVISED -
FILE NAME - 2681-ah-t-ssed.dgn	DRAWN - CG	REVISED -
PLLOT SCALE - 1/8" = 1' / in.	CHECKED - TEC	REVISED -
PLLOT DATE - 4/14/2020	DATE - 3/28/2020	REVISED -

**VERMILION COUNTY
BLOUNT ROAD DISTRICT
TR 186 IMPROVEMENTS**

CROSS SECTIONS			
SCALE: 1"=5'	SHEET NO.	OF SHEETS	STA. 108+00.00 TO STA. 109+00.00

T.R. RTE. 186	SECTION 17-01133-00-BR	COUNTY VERMILION	TOTAL SHEETS 22	SHEET NO. 22
CONTRACT NO. 91593				
FED. ROAD DIST. NO. ILLINOIS FED. AID PROJECT				