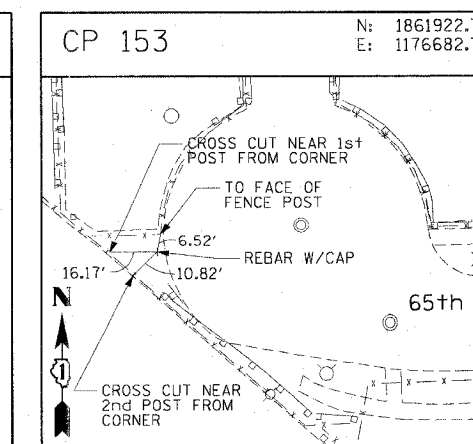
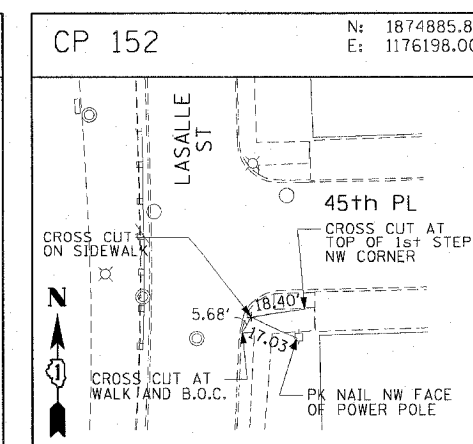
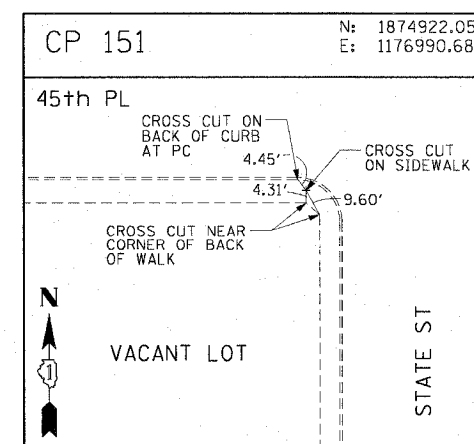
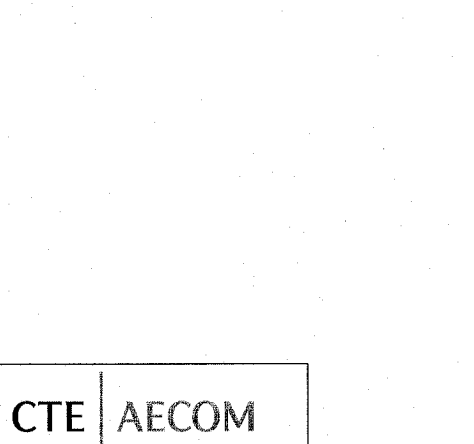
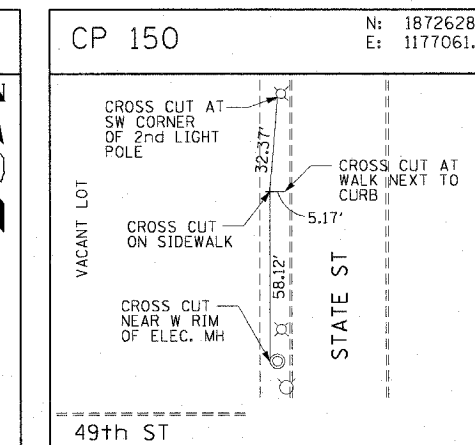
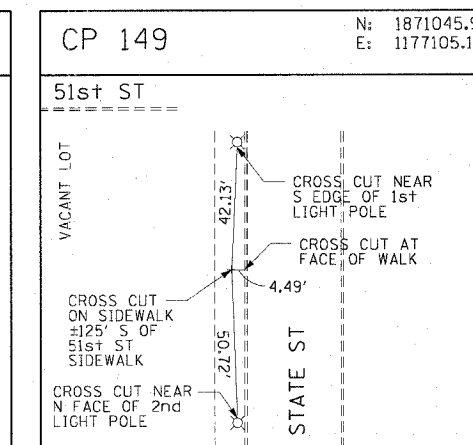
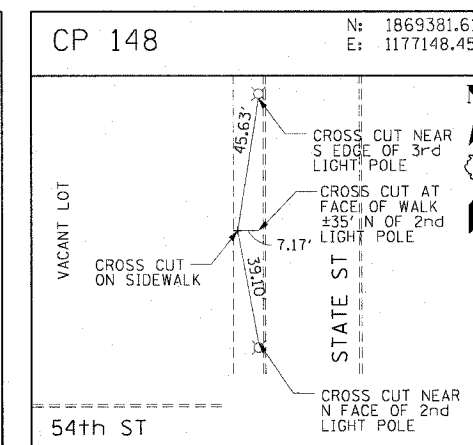
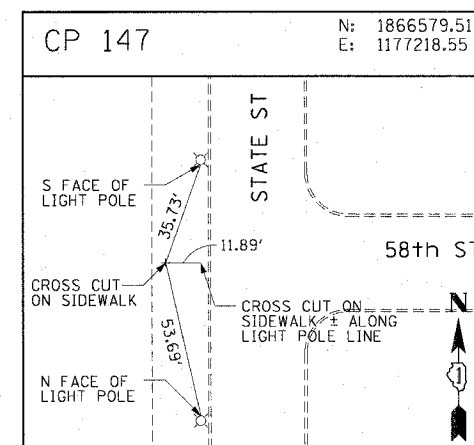
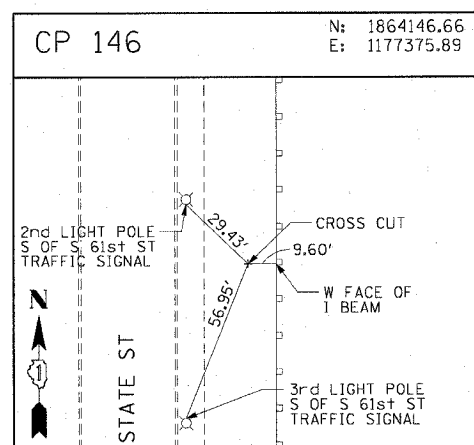
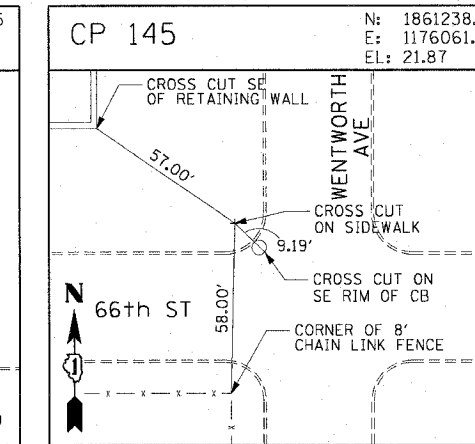
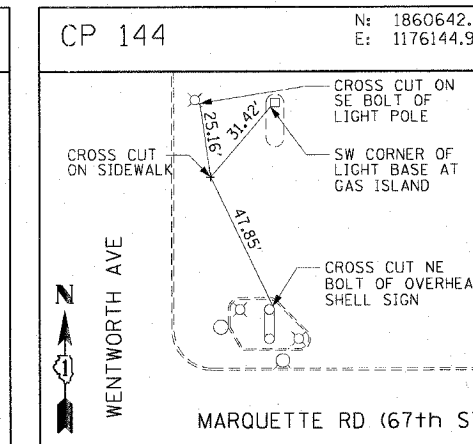
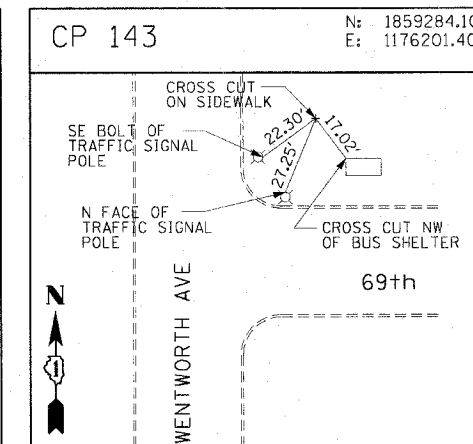
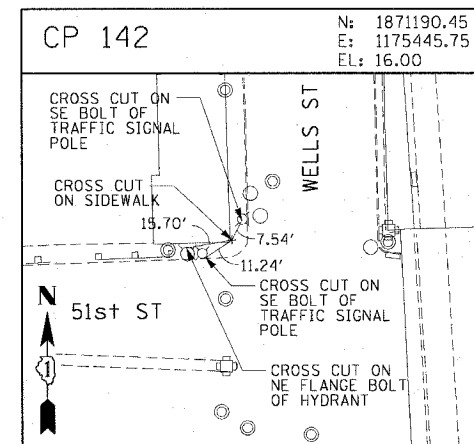
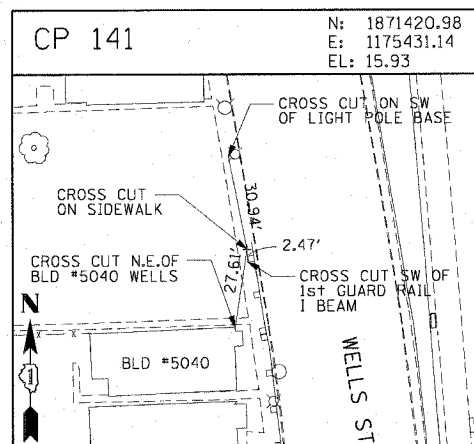
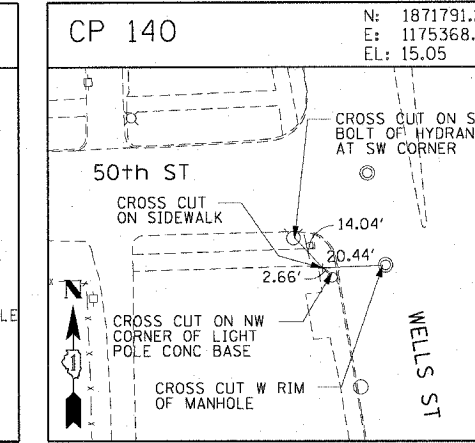
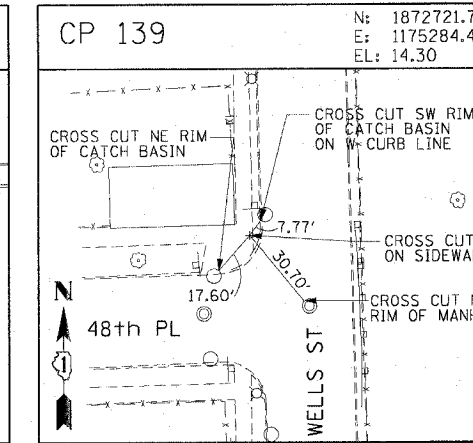
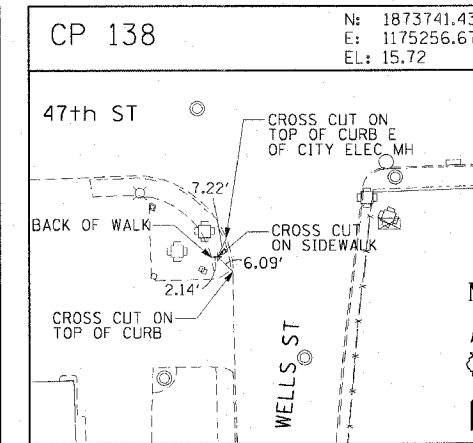
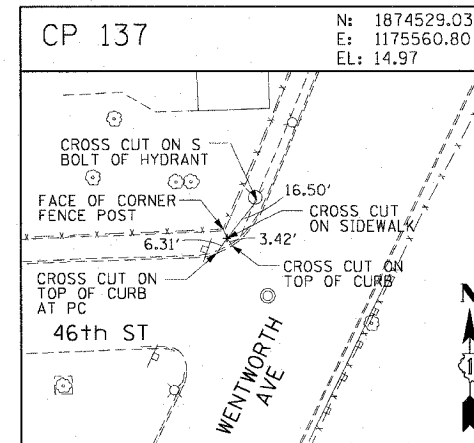
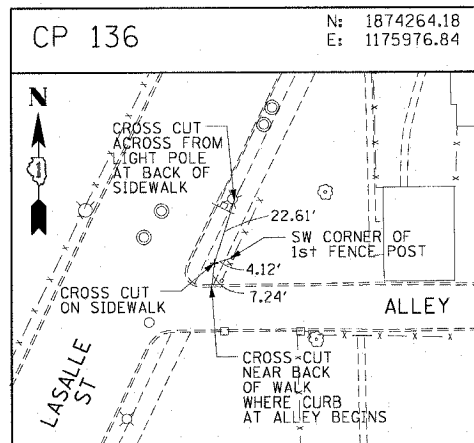


F.A.I. RTE.	SECTION	COUNTY	TOTAL SHEETS	SHEET NO.
90/94	2005-071 LS	COOK	39	13
STA.		TO STA.		
FED. ROAD DIST. NO. 1		ILLINOIS FED. AID PROJECT		
60A77				



CTE | AECOM

REVISIONS	
NAME	DATE

ILLINOIS DEPARTMENT OF TRANSPORTATION
F.A.I. 90/94 (DAN RYAN EXPRESSWAY)
63RD STREET GATEWAY LANDSCAPING AND IRRIGATION
SURVEY TIES AND CONTROL POINTS

SCALE: 1"=30'
DATE: MAY 02, 2008

DRAWN BY: MRK
CHECKED BY: JAL

PA:PA0468.civil/29.gateway-irrigation.spr22f (63rd St) 03/22/08 03:49:05 PM