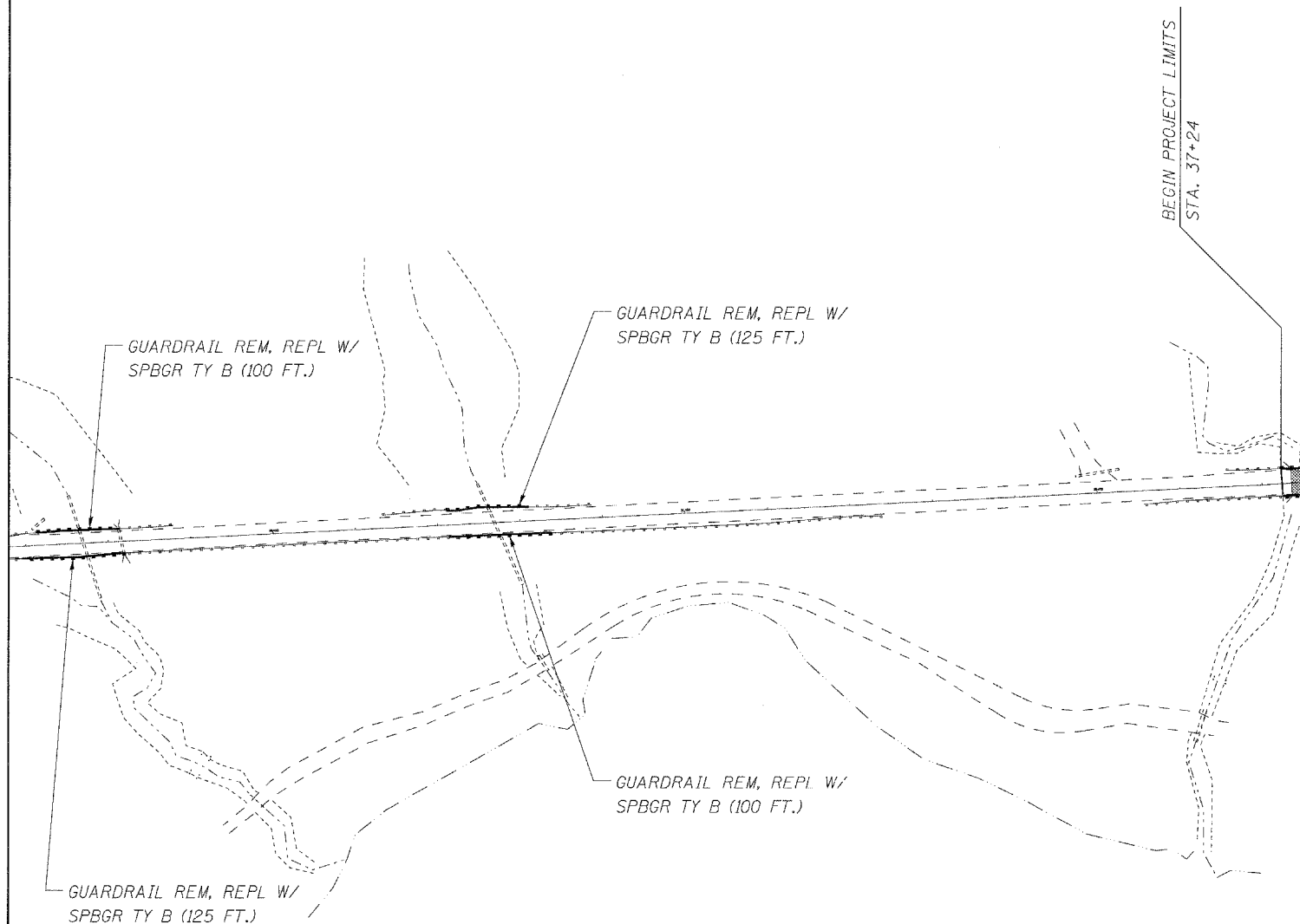
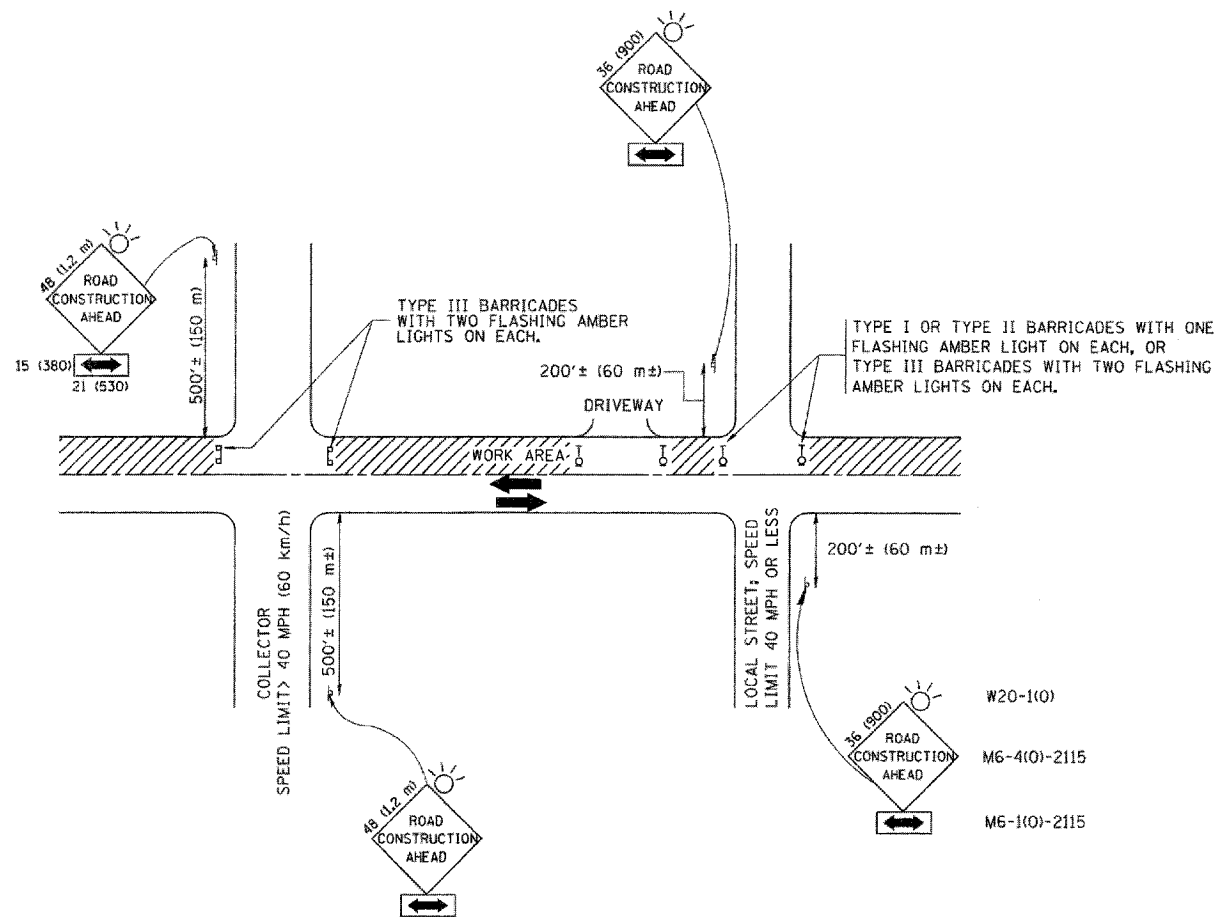




**NOTE**  
 LOCATIONS SHOWN ARE APPROXIMATE. THIS WORK IS TO BE COMPLETED AT THE DIRECTION OF THE ENGINEER. THIS WORK MAY BE COMPLETED UNDER TEMPORARY LANE CLOSURES, PER STATE STANDARDS 701201 OR 701301 AS APPROVED AND DIRECTED BY THE ENGINEER, ON THE WEEKENDS WHEN DETOURS ARE IN PLACE.



0' 50' 100' 200'  
 SCALE: 1" = 100'



**TRAFFIC CONTROL AND PROTECTION FOR SIDE ROADS, INTERSECTIONS, AND DRIVEWAYS**

**NOTES:**

- A. FOR NO LANE RESTRICTION ON THE SIDE ROAD OR DRIVEWAYS**
- SIDE ROAD WITH A SPEED LIMIT OF 40 MPH (60 km/h) OR LESS AS SHOWN ON THE DRAWING AND AS DIRECTED BY THE ENGINEER:
    - ONE ROAD CONSTRUCTION AHEAD SIGN 36 x 36 (900x900) WITH A FLASHER AND FLAG MOUNTED ON IT APPROXIMATELY 200' (60 m) IN ADVANCE OF THE MAIN ROUTE.
    - THE CLOSED PORTION OF THE MAIN ROUTE SHALL BE PROTECTED BY BLOCKING WITH TYPE I, TYPE II OR TYPE III BARRICADES, 1/3 OF THE CROSS SECTION OF THE CLOSED PORTION.
  - SIDE ROAD WITH A SPEED LIMIT GREATER THAN 40 MPH (60 km/h) AS SHOWN ON THE DRAWING AND AS DIRECTED BY THE ENGINEER:
    - ONE ROAD CONSTRUCTION AHEAD SIGN 48 x 48 (1,2 m x 1,2 m) WITH A FLASHER MOUNTED ON IT APPROXIMATELY 500' (150 m) IN ADVANCE OF THE MAIN ROUTE.
    - THE CLOSED PORTION OF THE MAIN ROUTE SHALL BE PROTECTED BY BLOCKING WITH TYPE III BARRICADES, 1/2 OF THE CROSS SECTION OF THE CLOSED PORTION.
- B. FOR A LANE CLOSURE ON A SIDE ROAD OR DRIVEWAY:**  
 USE APPLICABLE PORTIONS OF THE TYPICAL APPLICATION OF TRAFFIC CONTROL DEVICES (STD. 701501, STD. 701606 OR THE APPROPRIATE STANDARD). THE SPACING OF SIGNS AND BARRICADES SHALL BE ADJUSTED FOR FIELD CONDITIONS AS DIRECTED BY THE ENGINEER. THE DIRECTIONAL ARROW SHALL BE COVERED OR REMOVED WHEN NO LONGER CONSISTENT WITH THE SIDE ROAD LANE CLOSURE.
- C. ADVANCE WARNING SIGNS ARE TO BE OMITTED ON DRIVEWAY UNLESS OTHERWISE NOTED.**
- D. THE TRAFFIC CONTROL AND PROTECTION FOR SIDE ROADS, INTERSECTIONS, AND DRIVEWAYS SHALL BE INCIDENTAL TO THE COST OF SPECIFIED TRAFFIC CONTROL STANDARDS OR ITEMS.**
- 3. WHEN THE SIDE ROAD LIES BETWEEN THE BEGINNING OF THE MAINLINE SIGNING AND THE WORK ZONE, A SINGLE HEADED ARROW (M6-1) SHALL BE USED IN LIEU OF THE DOUBLE HEADED ARROW (M6-4).**

All dimensions are in millimeters (inches) unless otherwise shown.

TC-10

**LOXCO, INC.**  
 CONSULTING ENGINEERS  
 1979 N. MILL ST., SUITE 210  
 NAPERVILLE, ILLINOIS 60563 PH: (630) 577-9100

USER NAME = #USER#	DESIGNED - MJY	REVISED -
PLOT SCALE = #SCALE#	DRAWN - ST	REVISED -
PLOT DATE = #DATE#	CHECKED - MJY	REVISED -
	DATE - 06/27/2008	REVISED -

**STATE OF ILLINOIS  
 DEPARTMENT OF TRANSPORTATION**

**GUARDRAIL PLACEMENT PLAN  
 IL ROUTE 31**

SCALE: 1" = 100' SHEET NO. 16 OF 17 SHEETS

**TRAFFIC CONTROL AND  
 PROTECTION FOR SIDE ROADS,  
 INTERSECTIONS AND DRIVEWAYS**

STA. 37+24 TO STA. 37+60

F.A. RTE.	SECTION	COUNTY	TOTAL SHEETS	SHEET NO.
3887	S-T-1	KANE	17	16
D-91-076-08			CONTRACT NO. 60E50	
FED. ROAD DIST. NO.		ILLINOIS FED. AID PROJECT		