

STATE OF ILLINOIS  
DEPARTMENT OF TRANSPORTATION  
DIVISION OF HIGHWAYS

**PLANS FOR PROPOSED  
FEDERAL AID HIGHWAY**

**FAU 2855 / MARSHFIELD AVENUE  
119TH STREET TO 123RD STREET  
LOCAL AGENCY PAVEMENT PRESERVATION  
STREET RESURFACING  
PROJECT: M-8003 (996)  
SECTION NO.: 08-00057-00-RS  
JOB NO.: C-91-382-08  
VILLAGE OF CALUMET PARK  
COOK COUNTY**

F. A. I. D. DIST.	SECTION	COUNTY	TOTAL SHEETS	SHEET NO.
2855	08-00057-00-RS	COOK	11	01
STA.		TO STA.		
FED. ROAD DIST. NO.	ILLINOIS	FED. AID PROJECT		

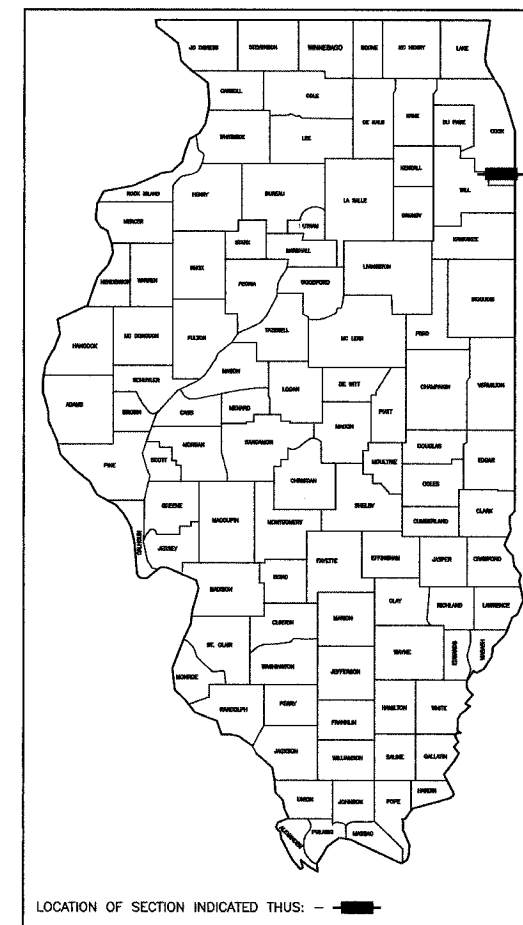
CONTRACT #63043

**INDEX OF SHEETS**

- COVER SHEET, INDEX OF SHEETS, LOCATION MAP  
INDEX OF STATE STANDARDS
- SUMMARY OF QUANTITIES & GENERAL NOTES
- TYPICAL CROSS SECTION
- PAVEMENT PLAN
- STRIPING PLAN
- 6-11 DISTRICT 1 STANDARD DETAILS

**STATE STANDARDS**

- |           |                                                         |
|-----------|---------------------------------------------------------|
| 000001-05 | STANDARD STANDARDS, ABBREVIATIONS AND PATTERNS          |
| 280001-04 | TEMPORARY EROSION CONTROL SYSTEMS                       |
| 424001-05 | CURB RAMPS FOR SIDEWALK                                 |
| 442201-03 | CLASS C AND D PATCHES                                   |
| 606001-03 | CONCRETE CURB AND COMBINATION CONCRETE CURB & GUTTER    |
| 701501-04 | URBAN LANE CLOSURE 2-L, 2-W, UNDIVIDED                  |
| 701701-05 | URBAN LANE CLOSURE, MULTILANE INTERSECTION              |
| 701901    | TRAFFIC CONTROL DEVICES                                 |
| 780001-01 | TYPICAL PAVEMENT MARKINGS                               |
| 781001-02 | TYPICAL APPLICATIONS RAISED REFLECTIVE PAVEMENT MARKERS |



STATE OF ILLINOIS  
DEPARTMENT OF TRANSPORTATION  
DIVISION OF HIGHWAYS

APPROVED *May 7 2008*  
*Joseph D. Baker*  
MAYOR, VILLAGE OF CALUMET PARK

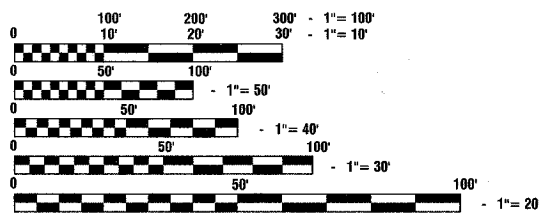
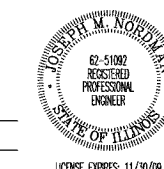
PASSED *MAY 22 2008*  
*Christopher Holt*  
REGION ONE ENGINEER OF LOCAL ROADS & STREETS

RELEASED FOR  
BID BASED ON  
LIMITED REVIEW *MAY 22 2008*  
*Diana M. O'Keefe*  
DEPUTY DIRECTOR OF HIGHWAYS, REGION ONE ENGINEER

PRINTED BY THE AUTHORITY OF  
THE STATE OF ILLINOIS

PREPARED BY OR UNDER THE  
DIRECT SUPERVISION OF:

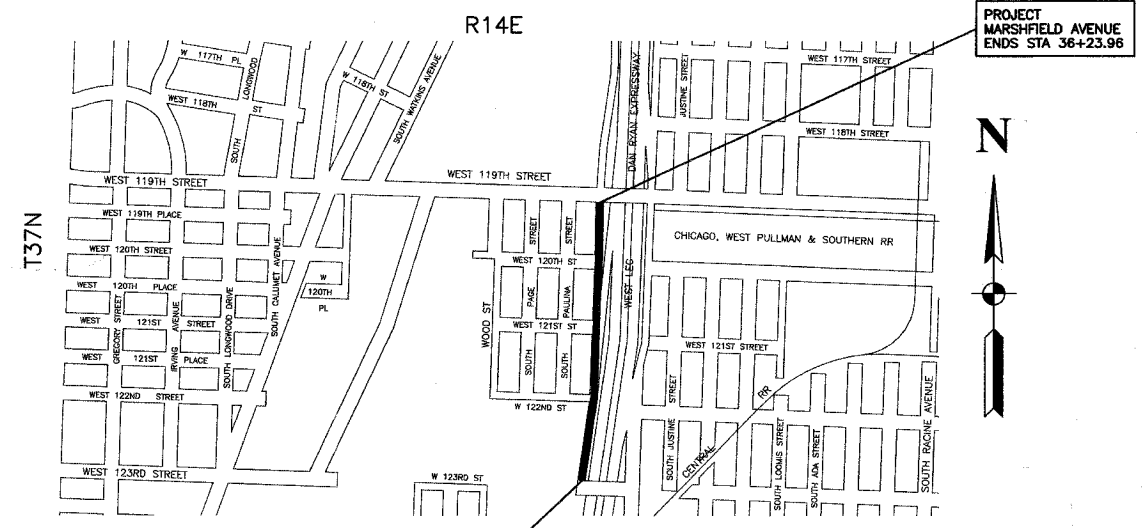
*J. M. ...*  
5/1/08



FULL SIZE PLANS HAVE BEEN PREPARED USING STANDARD  
ENGINEERING SCALES, REDUCED SIZED PLANS WILL NOT  
CONFORM TO STANDARD SCALES, IN MAKING MEASUREMENTS  
ON REDUCED PLANS, THE ABOVE SCALES MAY BE USED.

J. U. L. I. E.  
JOINT UTILITY LOCATION INFORMATION FOR EXCAVATION  
1 - 800 - 892 - 0123

CONTRACT NO. 63043



**LOCATION MAP**

— INDICATES PROPOSED IMPROVEMENT

GROSS LENGTH = 2,546 FEET = 0.48 MILES  
NET LENGTH = 2,546 FEET = 0.48 MILES

MARSHFIELD AVENUE ARTERIAL  
ADT = 13,900 (2007)  
= 13,900 (2030)  
DESIGN SPEED = 30 MPH  
SPEED LIMIT = 30 MPH

I.D.O.T. FIELD ENGINEER: MELCHOR MANGOBA 847-705-4408  
CONSULTANTS: ROBINSON ENGINEERING, LTD. 708-331-6700  
CONTACT ENGINEER: RON SMITH