

STATE OF ILLINOIS  
DEPARTMENT OF TRANSPORTATION  
DIVISION OF HIGHWAYS

F.A.P. RTE.	SECTION	COUNTY	TOTAL SHEETS	SHEET NO.
	08-00273-00-TL	KANE	30	1

CONTRACT NO. 63053

# PROPOSED PLANS FOR TRAFFIC SIGNAL INTERCONNECT

CONGESTION MITIGATION AIR QUALITY  
ROUTE: RIVER STREET  
FROM PRAIRIE STREET TO NEW YORK STREET  
SECTION: 08-00273-00-TL  
PROJECT NO.: CMM-9003(045)  
KANE COUNTY  
JOB NO.: C-91-439-08

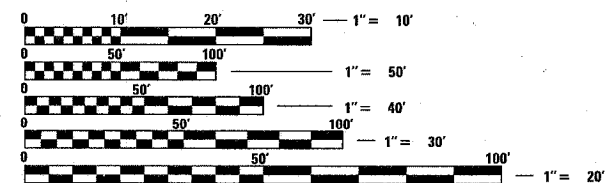
### INDEX OF SHEETS

- 1 COVER SHEET
- 2-3 SUMMARY OF QUANTITIES
- 4-7 STANDARD TRAFFIC SIGNAL DESIGN STANDARDS
- 8 TRAFFIC SIGNAL MODIFICATION PLAN - PRAIRIE STREET
- 9 EXISTING CABLE PLAN AND PHASE DESIGNATION DIAGRAM - PRAIRIE STREET
- 10 TRAFFIC SIGNAL MODIFICATION PLAN - NORTH AVENUE
- 11 EXISTING CABLE PLAN AND PHASE DESIGNATION DIAGRAM - NORTH AVENUE
- 12 EXISTING TRAFFIC SIGNAL EQUIPMENT TO BE REMOVED - BENTON STREET
- 13 TRAFFIC SIGNAL MODIFICATION PLAN - BENTON STREET
- 14 CABLE PLAN AND PHASE DESIGNATION DIAGRAM - BENTON STREET
- 15 EXISTING TRAFFIC SIGNAL EQUIPMENT TO BE REMOVED - DOWNER PLACE
- 16 TRAFFIC SIGNAL MODIFICATION PLAN - DOWNER PLACE
- 17 CABLE PLAN AND PHASE DESIGNATION DIAGRAM - DOWNER PLACE
- 18 EXISTING TRAFFIC SIGNAL EQUIPMENT TO BE REMOVED - GALENA BOULEVARD
- 19 TRAFFIC SIGNAL MODIFICATION PLAN - GALENA BOULEVARD
- 20 CABLE PLAN AND PHASE DESIGNATION DIAGRAM - GALENA BOULEVARD
- 21 EXISTING TRAFFIC SIGNAL EQUIPMENT TO BE REMOVED - NEW YORK STREET
- 22 TRAFFIC SIGNAL MODIFICATION PLAN - NEW YORK STREET
- 23 CABLE PLAN AND PHASE DESIGNATION DIAGRAM - NEW YORK STREET
- 24-25 INTERCONNECT PLAN
- 26 INTERCONNECT SCHEMATIC
- 27-30 MISCELLANEOUS DETAILS

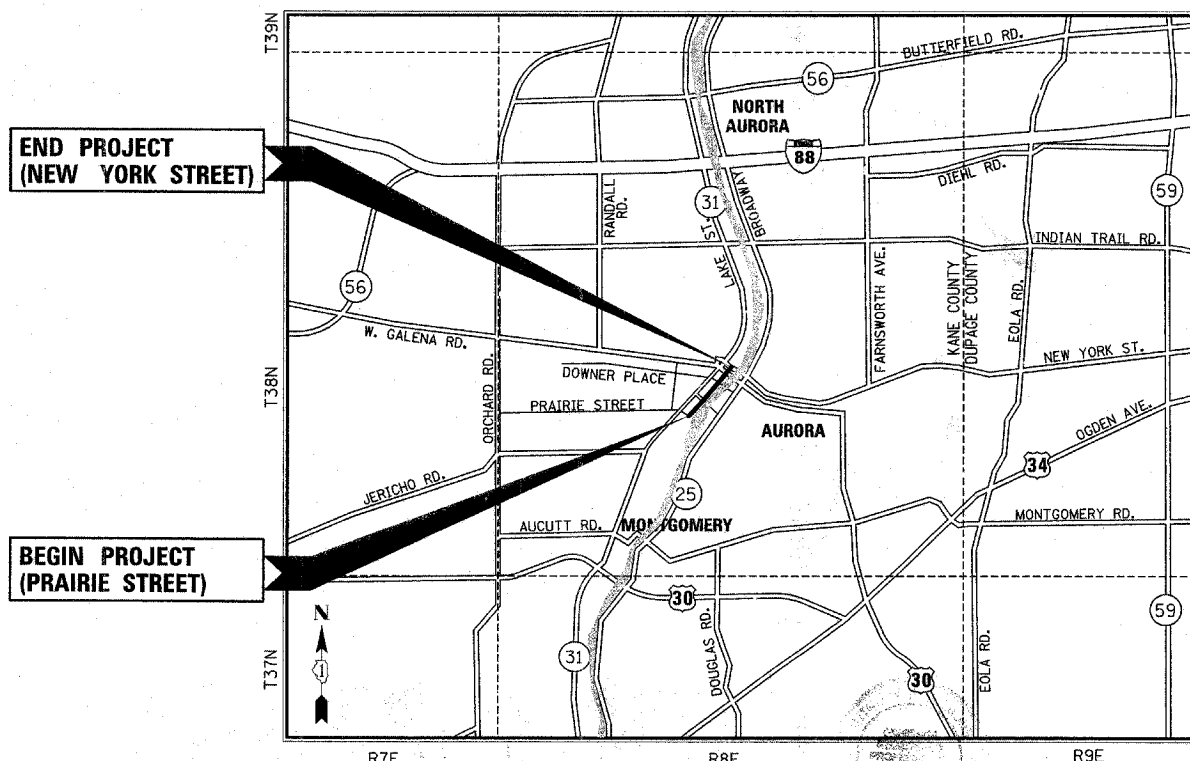
### HIGHWAY STANDARDS

- 424001-05 CURB RAMPS FOR SIDEWALKS
- 701601-05 URBAN LANE CLOSURE, MULTILANE, 1W OR 2W WITH NONTRAVERSABLE MEDIAN
- 701701-05 URBAN LANE CLOSURE, MULTILANE INTERSECTION
- 701801-03 LANE CLOSURE, MULTILANE 1W OR 2W CROSSWALK OR SIDEWALK CLOSURE
- 701901 TRAFFIC CONTROL DEVICES
- 720001 SIGN PANEL MOUNTING DETAILS
- 720006-01 SIGN PANEL ERECTION DETAILS
- 805001 ELECTRICAL SERVICE INSTALLATION DETAILS
- 814001-01 HANDHOLES
- 814006-01 DOUBLE HANDHOLES
- 857001 STANDARD PHASE DESIGNATION DIAGRAMS AND PHASE SEQUENCES
- 862001 UNINTERRUPTIBLE POWER SUPPLY (UPS)
- 873001-01 TRAFFIC SIGNAL GROUNDING & BONDING
- 878001-06 CONCRETE FOUNDATION DETAILS
- 880006 TRAFFIC SIGNAL MOUNTING DETAILS
- 000001-05 STANDARD SYMBOLS, ABBREVIATIONS AND PATTERNS

J.U.L.I.E.  
JOINT UTILITY LOCATION INFORMATION FOR EXCAVATION  
1-800-892-0123 (CALL 48 HOURS IN ADVANCE)



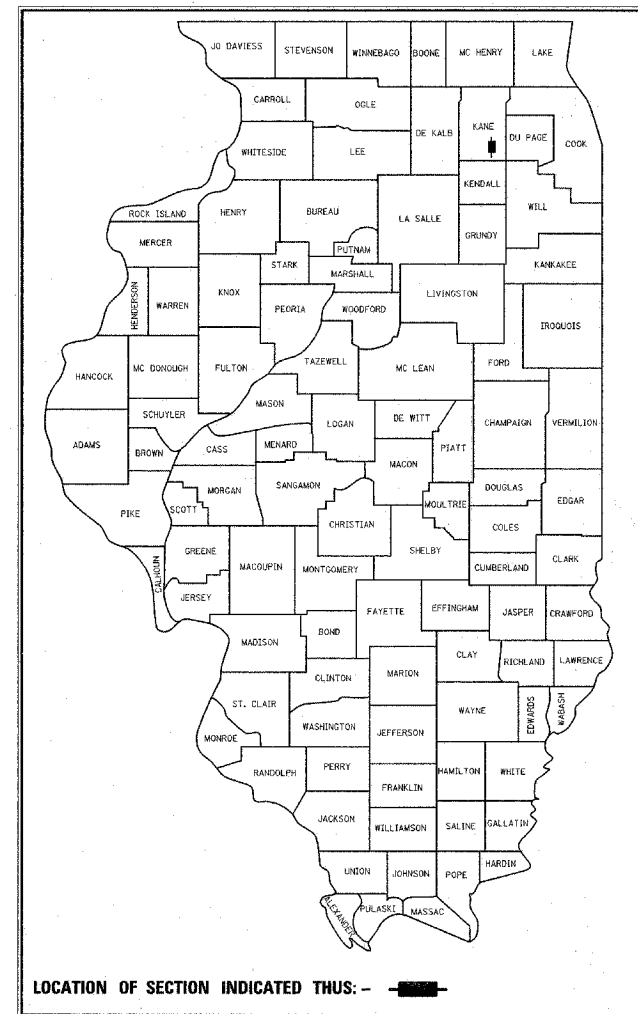
FULL SIZE PLANS HAVE BEEN PREPARED USING STANDARD ENGINEERING SCALES. REDUCED SIZED PLANS WILL NOT CONFORM TO STANDARD SCALES. IN MAKING MEASUREMENTS ON REDUCED PLANS, THE ABOVE SCALES MAY BE USED.



LOCATION MAP  
SCALE : N.T.S

POSTED SPEED = 30 M.P.H.  
PROJECT GROSS LENGTH = 4115.00 FEET = 0.80 MILES  
PROJECT NET LENGTH = 4115.00 FEET = 0.80 MILES

THIS IMPROVEMENT IS LOCATED  
IN THE CITY OF AURORA



<b>AGENCY RESPONSIBLE FOR LETTING</b>	
APPROVED	<i>Ronald Schwab</i> June 4, 2008 City of Aurora - Director of Public Works
PASSED	<i>Christopher Holt</i> 2008 DISTRICT 1 ENGINEER OF LOCAL ROADS & STREETS
RELEASING FOR BID BASED ON LIMITED REVIEW	JUNE 6, 2008 <i>Diana M. O'Keefe</i> DEPUTY DIRECTOR OF HIGHWAYS, REGION 1 ENGINEER



*Anthony P. Simmons* 6/4/08  
ANTHONY P. SIMMONS, P.E.  
NO. 062-058414  
EXPIRES: 11/30/09  
SMITH ENGINEERING CONSULTANTS, INC.  
(EXCLUDES SHEETS 113-126)

Illinois Professional Design Firm # 184-000108  
**SEC GROUP, INC.**  
Smith Engineering Consultants • SEC Automation • SEC Planning  
651 Prairie Pointe Drive, Yorkville, IL 60560  
t. 630.553.7660 f. 630.553.7646  
www.secgroupinc.com engineering@secgroupinc.com

CONTRACT NO: 63053

DISTRICT 1 - LOCAL ROADS ENGINEER: PHILIP A. MARCYN (847)705-4189