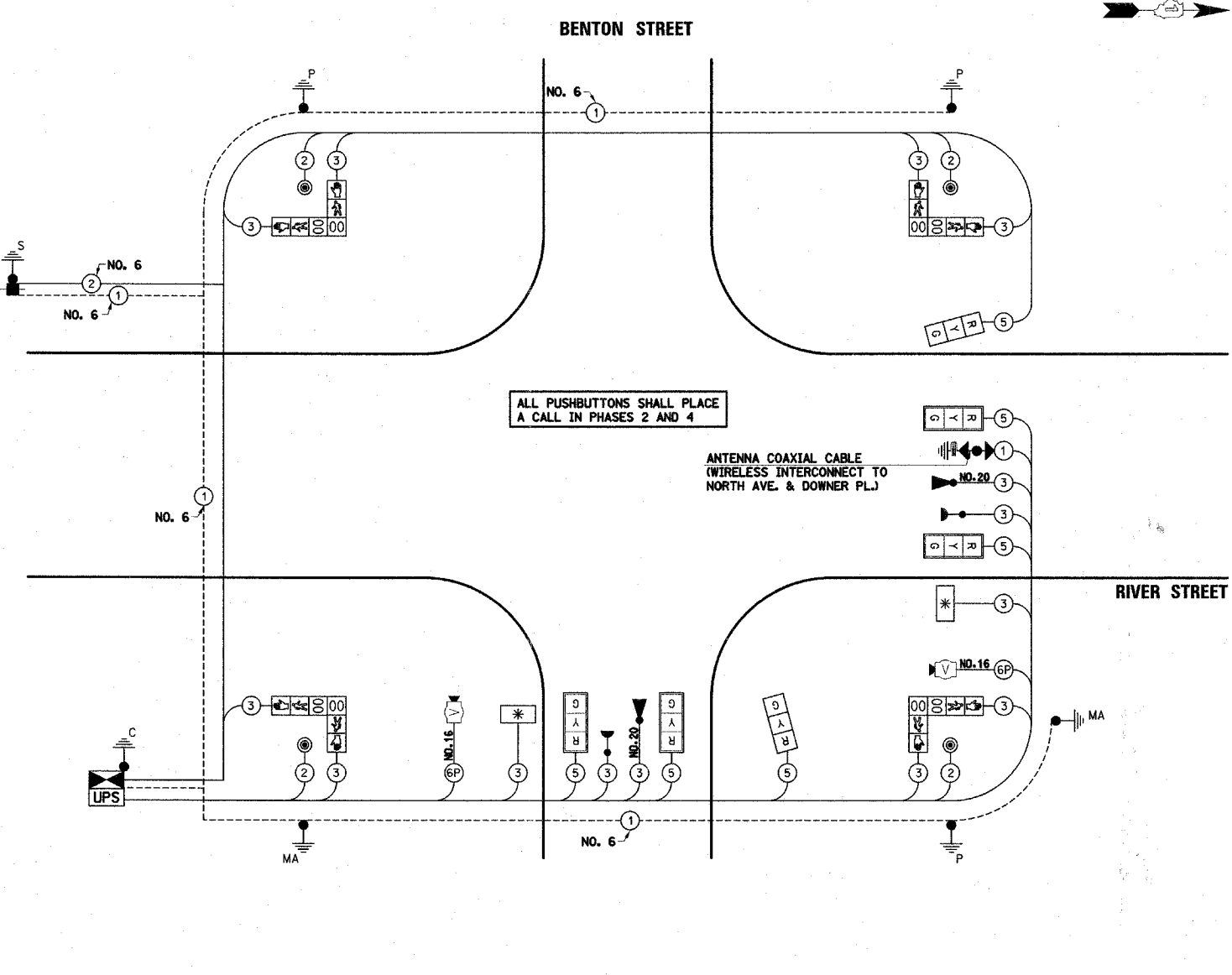


**CABLE PLAN LEGEND**

- |                 |                 |   |
|-----------------|-----------------|---|
| <b>EXISTING</b> | <b>PROPOSED</b> |   |
|                 |                 | 8" (200mm) TRAFFIC SIGNAL SECTION   |
|                 |                 | 12" (300mm) TRAFFIC SIGNAL SECTION  |
|                 |                 | 12" (300mm) PEDESTRIAN SIGNAL SECTION   |
|                 |                 | 12" (300mm) PEDESTRIAN SIGNAL SECTION   |
|                 |                 | CONTROLLER CABINET  |
|                 |                 | SERVICE INSTALLATION  |
|                 |                 | TELEPHONE INSTALLATION  |
|                 |                 | VEHICLE DETECTOR, INDUCTION LOOP  |
|                 |                 | MAGNETIC DETECTOR   |
|                 |                 | EMERGENCY VEHICLE LIGHT DETECTOR  |
|                 |                 | CONFIRMATION BEACON   |
|                 |                 | PUSHBUTTON DETECTOR   |
|                 |                 | LUMINAIRE   |
|                 |                 | 2 DENOTES NUMBER OF CONDUCTORS.<br>ALL CABLE NO. 14 EXCEPT AS INDICATED.<br>ALL LOOP DETECTOR CABLE TO BE SHIELDED. |
|                 |                 | 1 GROUND CABLE IN CONDUIT<br>NO. 6 SOLID COPPER (GREEN)   |
|                 |                 | 24 FIBER OPTIC CABLE IN CONDUIT<br>NO. 62.5/125 2-MM12F SM12F   |
|                 |                 | SIGNAL FACE WITH BACKPLATE.<br>"P" INDICATES PROGRAMMED HEAD.   |
|                 |                 | RAILROAD CONTROL CABINET  |
|                 |                 | ILLUMINATED SIGN<br>"NO LEFT TURN"  |
|                 |                 | ILLUMINATED SIGN<br>"NO RIGHT TURN"   |
|                 |                 | WIRELESS ANTENNA  |
|                 |                 | H/C GROUND ROD AT HANDHOLE (H),<br>DOUBLE HANDHOLE (H), OR CONTROLLER (C)   |
|                 |                 | P/MA GROUND ROD AT POST (P)<br>OR MAST ARM POLE (MA)  |
|                 |                 | S GROUND ROD AT ELECTRIC<br>SERVICE INSTALLATION  |
|                 |                 | UNINTERRUPTIBLE POWER SUPPLY  |
|                 |                 | LED STREET NAME SIGN  |
|                 |                 | VIDEO DETECTION CAMERA  |



**SCHEDULE OF QUANTITIES**

PAY ITEM DESCRIPTION	UNIT	BENTON STREET
SIGN PANEL - TYPE 1	SQ FT	20
CONDUIT IN TRENCH, 2" DIA., GALVANIZED STEEL	FOOT	65
CONDUIT IN TRENCH, 2 1/2" DIA., GALVANIZED STEEL	FOOT	18
CONDUIT IN TRENCH, 3" DIA., GALVANIZED STEEL	FOOT	30
CONDUIT IN TRENCH, 4" DIA., GALVANIZED STEEL	FOOT	22
CONDUIT PUSHED, 2" DIA., GALVANIZED STEEL	FOOT	65
CONDUIT PUSHED, 4" DIA., GALVANIZED STEEL	FOOT	211
TRENCH AND BACKFILL FOR ELECTRICAL WORK	FOOT	135
MAINTENANCE OF EXISTING TRAFFIC SIGNAL INSTALLATION	EACH	1
FULL-ACTUATED CONTROLLER AND TYPE V CABINET	EACH	1
ELECTRIC CABLE IN CONDUIT, SIGNAL NO. 14 2C	FOOT	486
ELECTRIC CABLE IN CONDUIT, SIGNAL NO. 14 3C	FOOT	1555
ELECTRIC CABLE IN CONDUIT, SIGNAL NO. 14 5C	FOOT	857
ELECTRIC CABLE IN CONDUIT, COMMUNICATION NO. 16 6 PAIR	FOOT	242
ELECTRIC CABLE IN CONDUIT, SERVICE, NO. 6 2C	FOOT	243
TRAFFIC SIGNAL POST, GALVANIZED STEEL 10 FT.	EACH	1
TRAFFIC SIGNAL POST, GALVANIZED STEEL 14 FT.	EACH	2
STEEL COMBINATION MAST ARM ASSEMBLY AND POLE 34 FT. (SPECIAL)	EACH	1
STEEL COMBINATION MAST ARM ASSEMBLY AND POLE 46 FT. (SPECIAL)	EACH	1
CONCRETE FOUNDATION, TYPE A	FOOT	16
CONCRETE FOUNDATION, TYPE C	FOOT	4
CONCRETE FOUNDATION, TYPE E 30-INCH DIAMETER	FOOT	15
CONCRETE FOUNDATION, TYPE E 36-INCH DIAMETER	FOOT	15
DRILL EXISTING HANDHOLE	EACH	14
SIGNAL HEAD, LED, 1-FACE, 3-SECTION, MAST ARM MOUNTED	EACH	4
SIGNAL HEAD, LED, 1-FACE, 3-SECTION, BRACKET MOUNTED	EACH	2
PEDESTRIAN SIGNAL HEAD, LED, 2-FACE, BRACKET MOUNTED WITH COUNTDOWN TIMER	EACH	4
TRAFFIC SIGNAL BACKPLATE, LOUVERED	EACH	4
LIGHT DETECTOR	EACH	2
LIGHT DETECTOR AMPLIFIER	EACH	1
PEDESTRIAN PUSH-BUTTON	EACH	4
REMOVE ELECTRIC CABLE FROM CONDUIT	FOOT	1841
REMOVE EXISTING TRAFFIC SIGNAL EQUIPMENT	EACH	1
REMOVE EXISTING CONCRETE FOUNDATION	EACH	6
SERVICE INSTALLATION - GROUND MOUNTED	EACH	1
PAINT TRAFFIC SIGNAL EQUIPMENT	EACH	1
PAINT TRAFFIC SIGNAL POST	EACH	3
ELECTRIC CABLE IN CONDUIT, GROUNDING, NO. 6 1C	FOOT	454
VIDEO DETECTION SYSTEM	EACH	1
ELECTRIC CABLE IN CONDUIT, NO. 20 3C TWISTED SHIELDED	FOOT	276
LED INTERNALLY ILLUMINATED STREET NAME SIGN	EACH	2
UNINTERRUPTIBLE POWER SUPPLY	EACH	1
GROUND EXISTING HANDHOLE FRAME AND COVER	EACH	4

DATE	
BY	
PLAN	
NO.	
DATE	
BY	
PROFILE	
NO.	

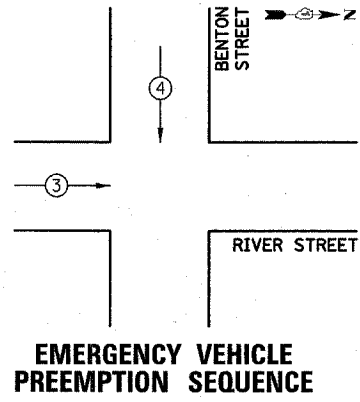
DATE	
BY	
PROFILE	
NO.	

TYPE	NO. LAMPS	WATTAGE		% OPERATION	TOTAL WATTAGE
		INCAND.	LED		
SIGNAL (RED)	6		17	0.50	51.0
(YELLOW)	6		25	0.25	37.5
(GREEN)	6		15	0.25	22.5
ARROW			12	0.10	
PED. SIGNAL	8		25	1.00	200.0
CONTROLLER	1		100	1.00	100.0
UPS	1		25	1.00	25.0
LED SIGN	2		60	0.50	60.0
VIDEO SYSTEM	1		15	1.00	15.0
<b>TOTAL =</b>					<b>511.0</b>

ENERGY COSTS TO: ILLINOIS DEPARTMENT OF TRANSPORTATION  
201 WEST CENTER COURT  
SCHAUMBURG, ILLINOIS 60196-1096

ENERGY SUPPLY CONTACT: MARK SCHERIBEL  
PHONE: (630) 723-2128  
COMPANY: COMMONWEALTH EDISON

FOUNDATION (DEPTH)	FT. (m)	CABLE SLACK	FT. (m)	VERTICAL	FT. (m)
TYPE A - POST	4 (1.2)	HANDHOLE	6.5 (2.0)	ALL FOUNDATIONS	3.5 (1.0)
C - CONTROLLER	4 (1.2)	DOUBLE HANDHOLE	13 (4.0)	MAST ARM (L) POLE	20'-4L-2=
D - CONTROLLER	4 (1.2)	SIGNAL POST	2 (1.0)		(6m+L-0.6m)
E - M.A. LENGTH		CONTROLLER CAB.	1 (0.5)	BRACKET MOUNTED	13 (4.0)
<30'	30" (900mm)	FIBER OPTIC	13 (4.0)	PED. PUSHBUTTON	4 (1.2)
<40'	30" (750mm)	ELECTRIC SERVICE	1 (0.5)	ELECTRIC SERVICE	13.5 (4.1)
<40'	36" (900mm)	GROUND CABLE	1 (0.5)	SERVICE TO GROUND	13.5 (4.1)
<50'	36" (900mm)			POST MOUNTED	6 (1.8)
>50'	36" (900mm)				



PROPOSED EMERGENCY VEHICLE PREEMPTORS	3	4
MOVEMENT	→	↓

THE TRAFFIC SIGNAL CONTROL EQUIPMENT FOR THIS PROJECT SHALL BE "ECONOLITE" TO MATCH THE EXISTING ADJACENT SYSTEM.

THE EMERGENCY VEHICLE PREEMPTION EQUIPMENT FOR THIS PROJECT SHALL BE OPTICOM AS REQUIRED BY THE CITY OF AURORA.

