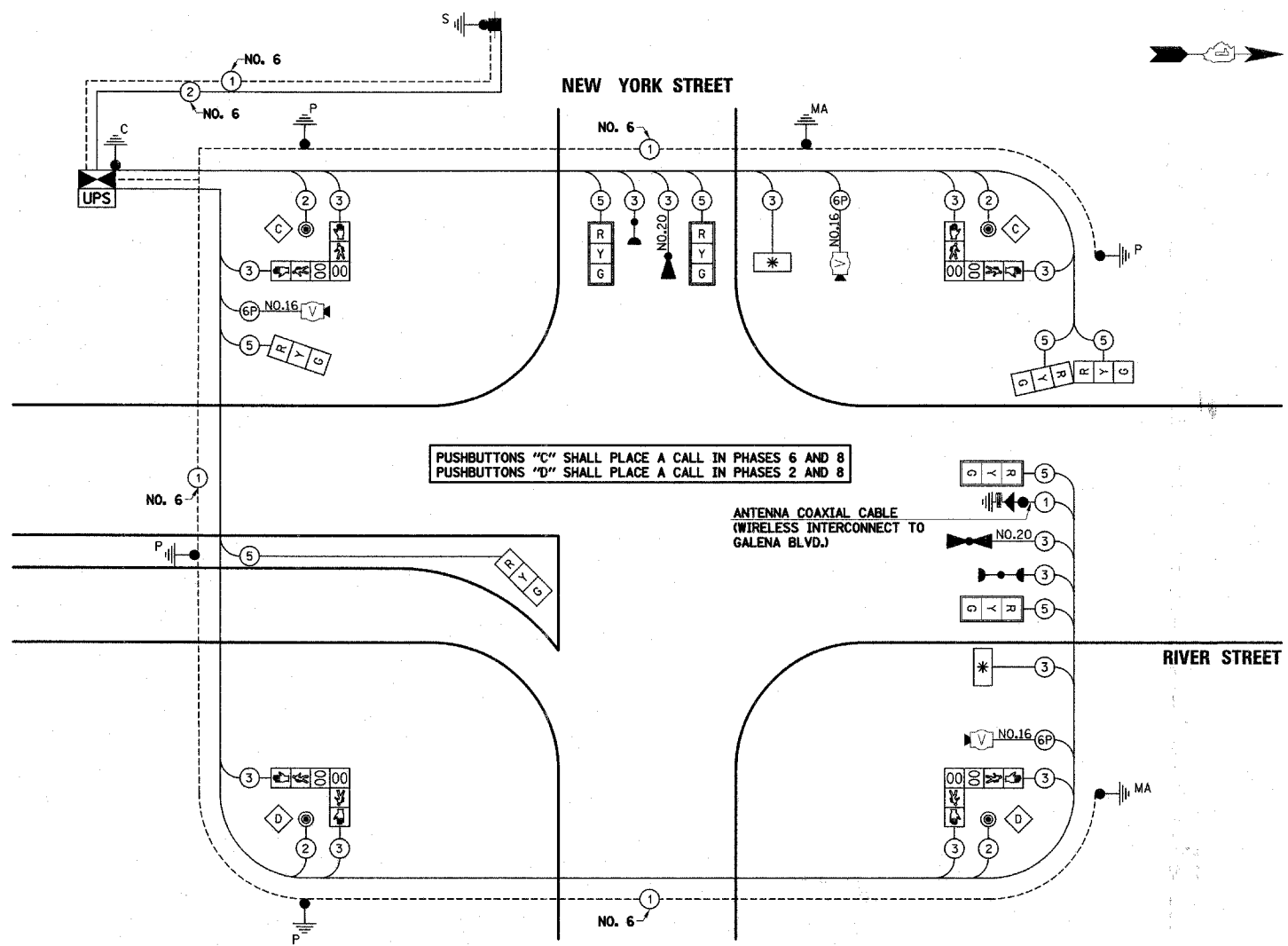


CABLE PLAN LEGEND

EXISTING	PROPOSED	DESCRIPTION
		8" (200mm) TRAFFIC SIGNAL SECTION
		12" (300mm) TRAFFIC SIGNAL SECTION
		12" (300mm) PEDESTRIAN SIGNAL SECTION
		12" (300mm) PEDESTRIAN SIGNAL SECTION
		CONTROLLER CABINET
		SERVICE INSTALLATION
		TELEPHONE INSTALLATION
		VEHICLE DETECTOR, INDUCTION LOOP
		MAGNETIC DETECTOR
		EMERGENCY VEHICLE LIGHT DETECTOR
		CONFIRMATION BEACON
		PUSHBUTTON DETECTOR
		LUMINAIRE
		DENOTES NUMBER OF CONDUCTORS. ALL CABLE NO. 14 EXCEPT AS INDICATED. ALL LOOP DETECTOR CABLE TO BE SHIELDED.
		GROUND CABLE IN CONDUIT NO. 6 SOLID COPPER (GREEN)
		FIBER OPTIC CABLE IN CONDUIT NO. 62.5/125 2-MM12F SM12F
		SIGNAL FACE WITH BACKPLATE. "P" INDICATES PROGRAMMED HEAD.
		RAILROAD CONTROL CABINET
		ILLUMINATED SIGN "NO LEFT TURN"
		ILLUMINATED SIGN "NO RIGHT TURN"
		WIRELESS ANTENNA
		GROUND ROD AT HANDHOLE (H), DOUBLE HANDHOLE (H), OR CONTROLLER (C)
		GROUND ROD AT POST (P) OR MAST ARM POLE (MA)
		GROUND ROD AT ELECTRIC SERVICE INSTALLATION
		UNINTERRUPTIBLE POWER SUPPLY
		LED STREET NAME SIGN



PUSHBUTTONS "C" SHALL PLACE A CALL IN PHASES 6 AND 8
 PUSHBUTTONS "D" SHALL PLACE A CALL IN PHASES 2 AND 8

ANTENNA COAXIAL CABLE (WIRELESS INTERCONNECT TO GALENA BLVD.)

THE TRAFFIC SIGNAL CONTROL EQUIPMENT FOR THIS PROJECT SHALL BE "ECONOLITE" TO MATCH THE EXISTING ADJACENT SYSTEM.

THE EMERGENCY VEHICLE PREEMPTION EQUIPMENT FOR THIS PROJECT SHALL BE OPTICOM AS REQUIRED BY THE CITY OF AURORA.

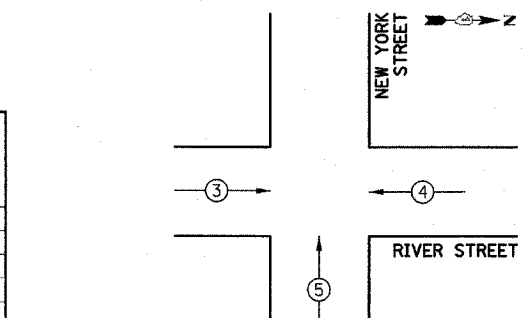
SCHEDULE OF QUANTITIES

PAY ITEM DESCRIPTION	UNIT	NEW YORK STREET
SIGN PANEL - TYPE 1	SQ FT	37
CONDUIT IN TRENCH, 2" DIA., GALVANIZED STEEL	FOOT	31
CONDUIT IN TRENCH, 2 1/2" DIA., GALVANIZED STEEL	FOOT	31
CONDUIT IN TRENCH, 3" DIA., GALVANIZED STEEL	FOOT	26
CONDUIT IN TRENCH, 4" DIA., GALVANIZED STEEL	FOOT	10
CONDUIT PUSHED, 2" DIA., GALVANIZED STEEL	FOOT	25
CONDUIT PUSHED, 4" DIA., GALVANIZED STEEL	FOOT	231
TRENCH AND BACKFILL FOR ELECTRICAL WORK	FOOT	98
MAINTENANCE OF EXISTING TRAFFIC SIGNAL INSTALLATION	EACH	1
FULL-ACTUATED CONTROLLER AND TYPE V CABINET	EACH	1
ELECTRIC CABLE IN CONDUIT, SIGNAL NO. 14 2C	FOOT	518
ELECTRIC CABLE IN CONDUIT, SIGNAL NO. 14 3C	FOOT	2157
ELECTRIC CABLE IN CONDUIT, SIGNAL NO. 14 6C	FOOT	1207
ELECTRIC CABLE IN CONDUIT, COMMUNICATION NO. 16 6 PAIR	FOOT	476
ELECTRIC CABLE IN CONDUIT, SERVICE, NO. 6 2C	FOOT	62
TRAFFIC SIGNAL POST, GALVANIZED STEEL 10 FT.	EACH	1
TRAFFIC SIGNAL POST, GALVANIZED STEEL 14 FT.	EACH	3
STEEL COMBINATION MAST ARM ASSEMBLY AND POLE 28 FT. (SPECIAL)	EACH	1
STEEL COMBINATION MAST ARM ASSEMBLY AND POLE 30 FT. (SPECIAL)	EACH	1
CONCRETE FOUNDATION, TYPE A	FOOT	20
CONCRETE FOUNDATION, TYPE C	FOOT	4
CONCRETE FOUNDATION, TYPE E 30-INCH DIAMETER	FOOT	30
DRILL EXISTING HANDHOLE	EACH	16
SIGNAL HEAD, LED, 1-FACE, 3-SECTION, MAST ARM MOUNTED	EACH	4
SIGNAL HEAD, LED, 1-FACE, 3-SECTION, BRACKET MOUNTED	EACH	2
SIGNAL HEAD, LED, 2-FACE, 3-SECTION, BRACKET MOUNTED	EACH	1
PEDESTRIAN SIGNAL HEAD, LED, 2-FACE, BRACKET MOUNTED WITH COUNTDOWN TIMER	EACH	4
TRAFFIC SIGNAL BACKPLATE, LOUVERED	EACH	4
LIGHT DETECTOR	EACH	3
LIGHT DETECTOR AMPLIFIER	EACH	1
PEDESTRIAN PUSH-BUTTON	EACH	4
REMOVE ELECTRIC CABLE FROM CONDUIT	FOOT	2540
REMOVE EXISTING TRAFFIC SIGNAL EQUIPMENT	EACH	1
REMOVE EXISTING CONCRETE FOUNDATION	EACH	8
SERVICE INSTALLATION - GROUND MOUNTED	EACH	1
PAINT TRAFFIC SIGNAL EQUIPMENT	EACH	1
PAINT TRAFFIC SIGNAL POST	EACH	4
ELECTRIC CABLE IN CONDUIT, GROUNDING, NO. 6 1C	FOOT	427
VIDEO DETECTION SYSTEM	EACH	1
REMOVE EXISTING LIGHT POLE AND FOUNDATION	EACH	1
ELECTRIC CABLE IN CONDUIT, NO. 20 3C TWISTED SHIELDED	FOOT	675
LED INTERNALLY ILLUMINATED STREET NAME SIGN	EACH	2
UNINTERRUPTIBLE POWER SUPPLY	EACH	1
GROUND EXISTING HANDHOLE FRAME AND COVER	EACH	5

I.D.O.T TRAFFIC SIGNAL INSTALLATION ELECTRICAL SERVICE REQUIREMENTS					
TYPE	NO. LAMPS	WATTAGE		% OPERATION	TOTAL WATTAGE
		INCAND.	LED		
SIGNAL (RED)	8		17	0.50	68.0
(YELLOW)	8		25	0.25	50.0
(GREEN)	8		15	0.25	30.0
ARROW			12	0.10	
PED. SIGNAL	8		25	1.00	200.0
CONTROLLER	1		100	1.00	100.0
UPS	1		25	1.00	25.0
LED SIGN	2		60	0.50	60.0
VIDEO SYSTEM	1		15	1.00	15.0
TOTAL =					548.0

ENERGY COSTS TO: ILLINOIS DEPARTMENT OF TRANSPORTATION
 201 WEST CENTER COURT
 SCHAUMBURG, ILLINOIS 60196-1096

ENERGY SUPPLY CONTACT: MARK SCHERIBEL
 PHONE: (630) 723-2128
 COMPANY: COMMONWEALTH EDISON

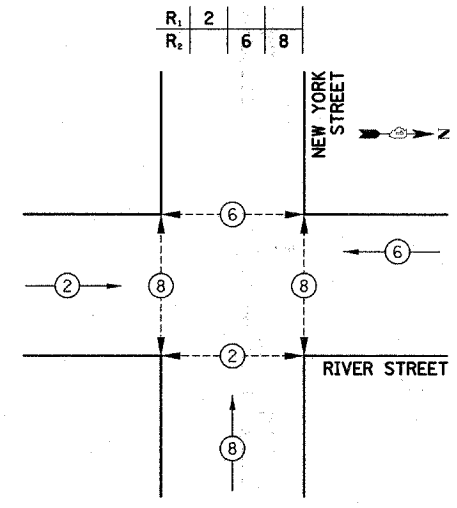


EMERGENCY VEHICLE PREEMPTION SEQUENCE

PROPOSED EMERGENCY VEHICLE PREEMPTORS			
PROPOSED EMERGENCY VEHICLE PREEMPTORS	3	4	5
MOVEMENT	→	←	↑

FOUNDATION (DEPTH)	FT. (m)	CABLE SLACK	FT. (m)	VERTICAL	FT. (m)
TYPE A - POST	4 (1.2)	HANDHOLE	6.5 (2.0)	ALL FOUNDATIONS	3.5 (1.0)
C - CONTROLLER	4 (1.2)	DOUBLE HANDHOLE	13 (4.0)	MAST ARM (L) POLE	20'+L-2=
D - CONTROLLER	4 (1.2)	SIGNAL POST	2 (1.0)	(6m+L-0.6m)	
E - M.A. LENGTH		CONTROLLER CAB.	1 (0.5)	BRACKET MOUNTED	13 (4.0)
<30' 30" (900mm)	10 (3.0)	FIBER OPTIC	13 (4.0)	PED. PUSHBUTTON	4 (1.2)
<40' 30" (750mm)	13.5 (4.1)	ELECTRIC SERVICE	1 (0.5)	ELECTRIC SERVICE	13.5 (4.1)
<40' 36" (900mm)	11 (3.4)	GROUND CABLE	1 (0.5)	SERVICE TO GROUND	13.5 (4.1)
<50' 36" (900mm)	13 (4.0)			POST MOUNTED	6 (1.8)
>50' 36" (900mm)	15 (4.6)				

CONTROLLER SEQUENCE



PHASE DESIGNATION DIAGRAM

CONTROLLER SEQUENCE LEGEND	
	DUAL ENTRY PHASE
	SINGLE ENTRY PHASE
	OVERLAP
	NUMBER REFERRING TO ASSOCIATED PHASE
	PEDESTRIAN PHASE

DATE	
BY	
REVISION	
NO.	
DATE	
BY	
REVISION	
NO.	

DATE	
BY	
REVISION	
NO.	
DATE	
BY	
REVISION	
NO.	