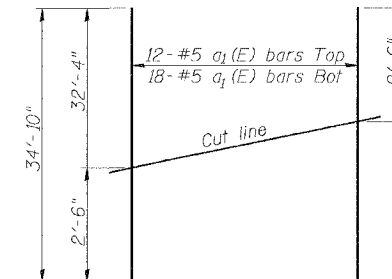
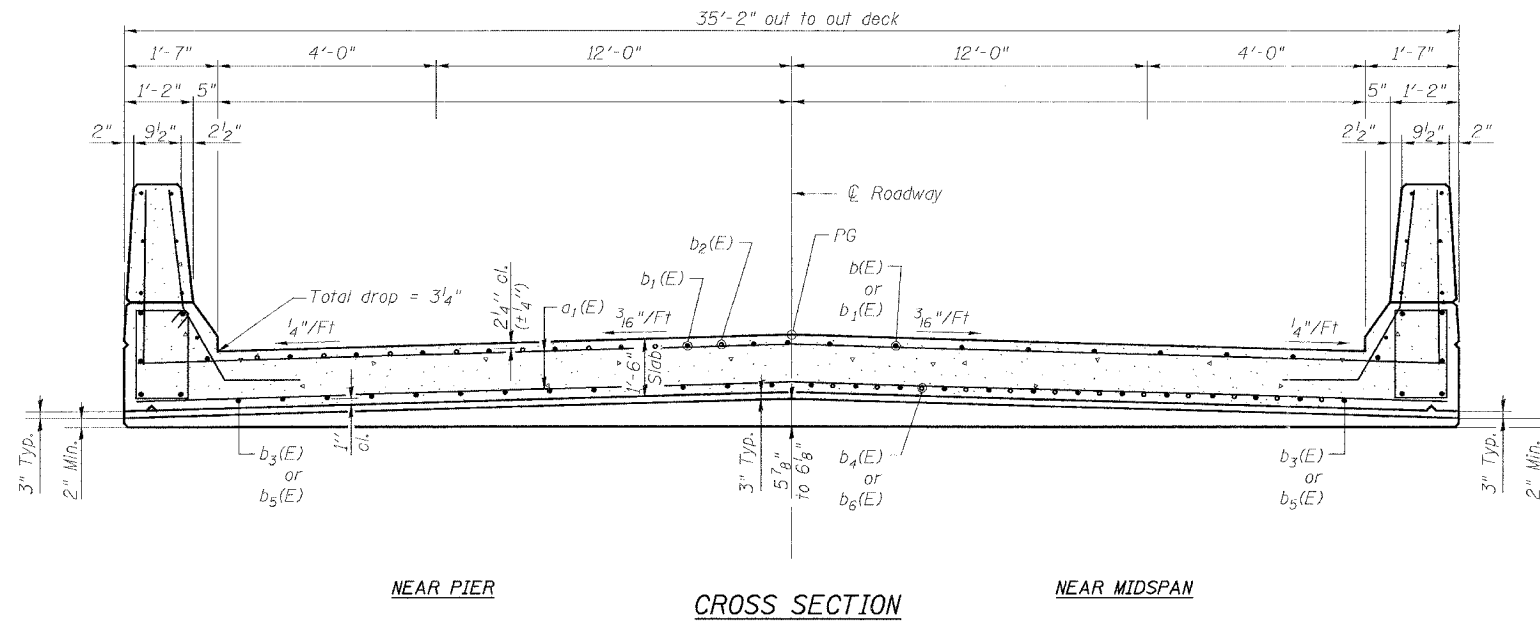


STATE OF ILLINOIS
DEPARTMENT OF TRANSPORTATION

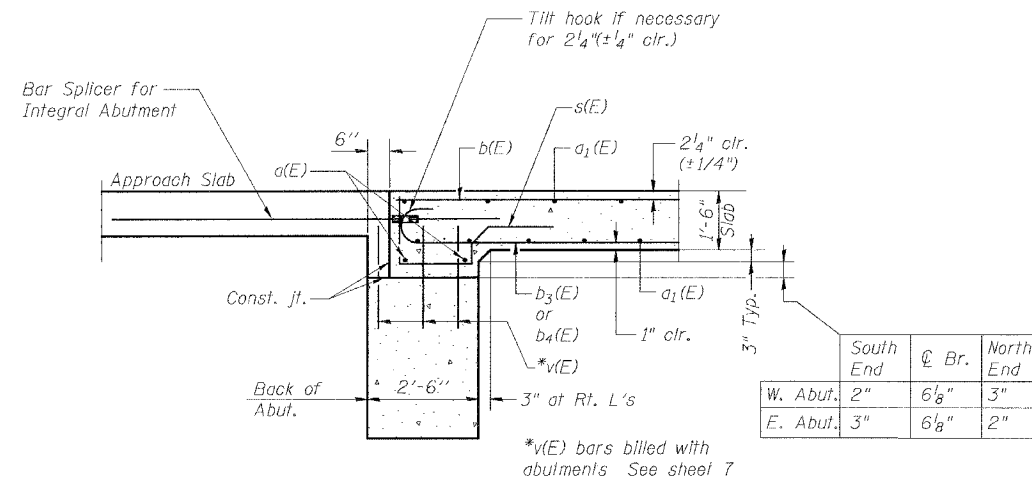
SHEET #5 OF 11 SHEETS		ROUTE NO.	SECTION	COUNTY	DATE	SHEET
		FAS 203	11BR-1	WHITESIDE & ROCK ISLAND	16	43
		FED. ROAD DIST. NO. 3	ILLINOIS	FED. AID PROJECT-		

CONTRACT #64939



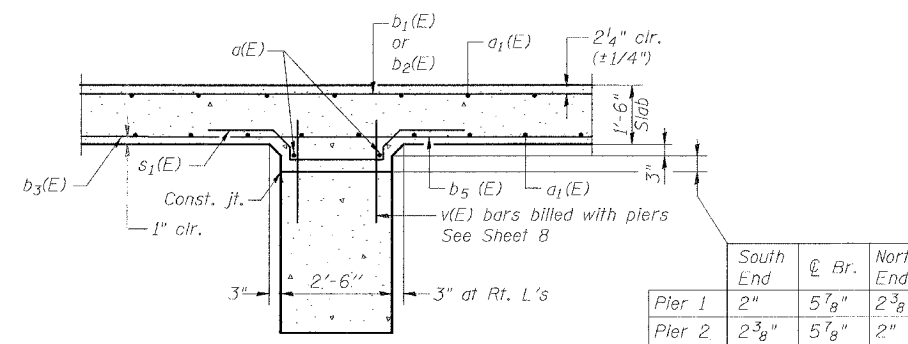
FIELD CUTTING DIAGRAM

Order $a_1(E)$ bars full length.
Cut to fit and use the remainder of bars in opposite face.



SECTION A-A

SECTION THRU ABUTMENT



SECTION B-B

SECTION THRU PIER

NOTES

- See sheets No. 4 and 6 of 11 for Plan, parapet reinforcing, and Bill of Materials.
- Reinforcing bars designated (E) shall be epoxy coated.
- Bars indicated thus 6x3-#5 etc. indicates 6 lines of bars with 3 lengths per line.
- See sheet No.1 of 11 for floor drain spacing.
- Space reinforcement bars to clear floor drain.

DESIGNED	KCM
CHECKED	TMM
DRAWN	JLM
CHECKED	TMM

SUPERSTRUCTURE DETAILS
FAS ROUTE 203 (MOLINE ROAD)
OVER MEREDOSIA DITCH
SECTION 11BR-1
STA. 428+20.80
WHITESIDE & ROCK ISLAND COUNTIES
SN 098-0111