

**INDEX OF SHEETS**

- 1 Cover Sheet
- 2 Summary of Quantities, General Notes, & Details
- 3 Typical Sections & Pavement Schedules
- 4 Plan and Profile
- 5 Horizontal Layout
- 6-15 Station Cross Sections
- 16 Storm Water Pollution Prevention & Erosion Control Plan
- 17-23 Bridge Plans

**LIST OF STANDARDS**

- Standard 000001-05 Standard symbols, abbreviations and patterns
- Standard 280001-04 Temporary erosion control systems
- Standard 285001-02 Fabric Formed Concrete Revetment Mats
- Standard 420101-04 24' (7.2 m) Jointed PCC Pavement
- Standard 420401-06 Bridge Approach Pavement
- Standard 515001-02 Name Plate for Bridges
- Standard 542301-01 Precast Reinforced Concrete Flared End Section
- Standard 542306-01 Precast Reinforced Concrete Elliptical Flared End Section
- Standard 542401 Metal End Sections for Pipe Culverts
- Standard 601101 Concrete Headwall for Pipe Drain
- Standard 602301-01 Inlet - Type A
- Standard 604006-03 Frame and Grate Type 3
- Standard 606001-03 Concrete Curb Type B and Combination Concrete Curb and Gutter
- Standard 630001-07 Steel Plate Beam Guardrail
- Standard 630301-04 Shoulder Widening For Type 1 (Special) Guardrail Terminals
- Standard 631011-04 Traffic Barrier Terminal, Type 2
- Standard 631032-03 Traffic Barrier Terminal, Type 6A
- Standard 635006-02 Reflector and Terminal Marker Placement
- Standard 665001-01 Woven Wire Fence
- Standard 701011-01 Off-road moving operations, 2-l, 2-w, day only, for speeds > 45 mph
- Standard 701301-02 Lane closure, 2-l, 2-w, short time operations
- Standard 701901 Traffic Control Devices
- Standard BLR-21-7 Typical application of traffic control devices for Construction on Rural Local Highways
- Standard BLR-22-5 Typical application of traffic control devices 2-l, 2-w, rural, Road closed to Thru Traffic

ROADWAY CLASSIFICATION: LOCAL STREET (URBAN)  
 2007 ADT = 2,650 (2027 ADT = 3,450)  
 DESIGN SPEED: 45 MPH

**JOINT UTILITY LOCATING INFORMATION FOR EXCAVATORS**

J.U.L.I.E. Telephone No. Toll Free 1-800-892-0123

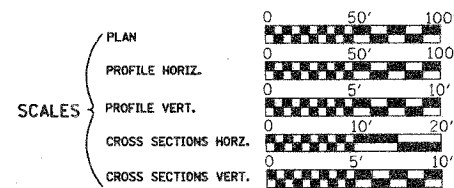
SEE PROPOSAL FOR UTILITY COMPANIES

CONTRACT NO. : 95542



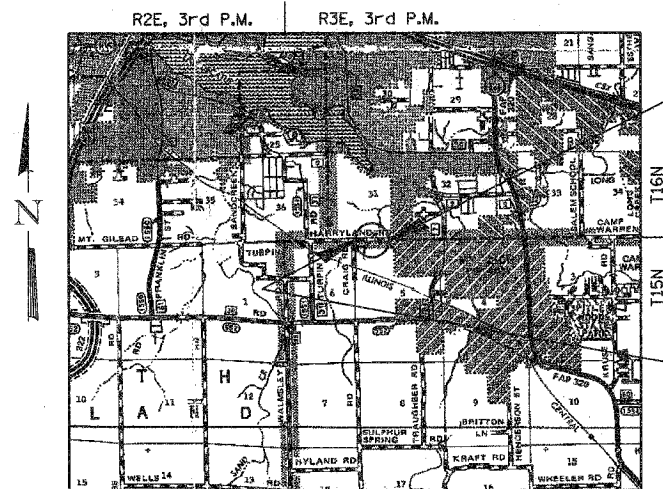
345 EAST ASH AVENUE, SUITE B  
 DECATUR, ILLINOIS 62526  
 PH. 217-875-4800

STATE OF ILLINOIS  
 DEPARTMENT OF TRANSPORTATION  
 DIVISION OF HIGHWAYS  
**PLANS FOR PROPOSED  
 LOCAL AGENCY IMPROVEMENT**



**HIGHWAY BRIDGE PROGRAM  
 CS #900 (HARRY LAND ROAD)  
 OVER TRIB. TO LAKE DECATUR  
 SECTION 05-00205-00-BR  
 VILLAGE OF MOUNT ZION  
 MACON COUNTY  
 PROJECT BRM-5169(40)**

C-97-047-08



**LAYOUT**

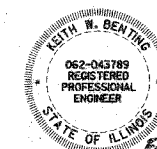
Approximate Scale: scale miles

Total and Net Length of Improvement 1058.90 Feet = 0.201 Miles

IMPROVEMENT ENDS  
 STA. 22+56.20

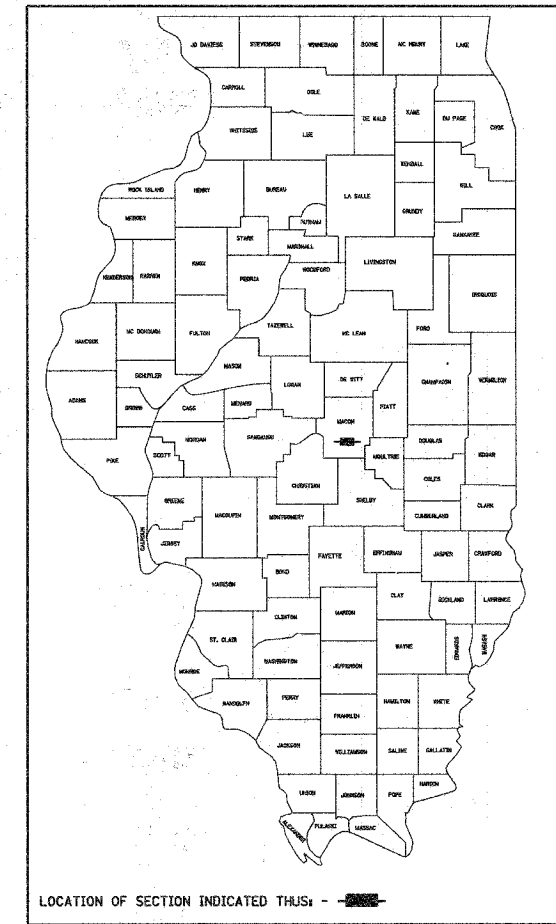
EXIST. STR. NO. 058-3153  
 PROP. STR. NO. 058-3386

IMPROVEMENT BEGINS  
 STA. 11+97.30



*Keith B. Berting*  
 Illinois Professional No. 43789

ROUTE NO.	SECTION	COUNTY	TOTAL SHEETS	SHEET NO.
CS #900	05-00205-00-BR	MACON	23	1
FED. ROAD DIST. NO.		ILLINOIS PROJECT: BRM-5169(40)	CONTRACT NO. 95542	



APPROVED 1-29 2008  
*Greg Niles*  
 ADMINISTRATOR - VILLAGE OF MOUNT ZION

PASSED 2-11 2008  
*Manuel E. Castro*  
 DISTRICT SEVEN ENGINEER OF LOCAL ROADS & STREETS

Releasing For Bid Based on Limited Review 2-11 2008  
*Christina M. Reed*  
 DEPUTY DIRECTOR OF HIGHWAYS, REGION FOUR ENGINEER

STATE OF ILLINOIS  
 DEPARTMENT OF TRANSPORTATION

1/24/2008  
 Date