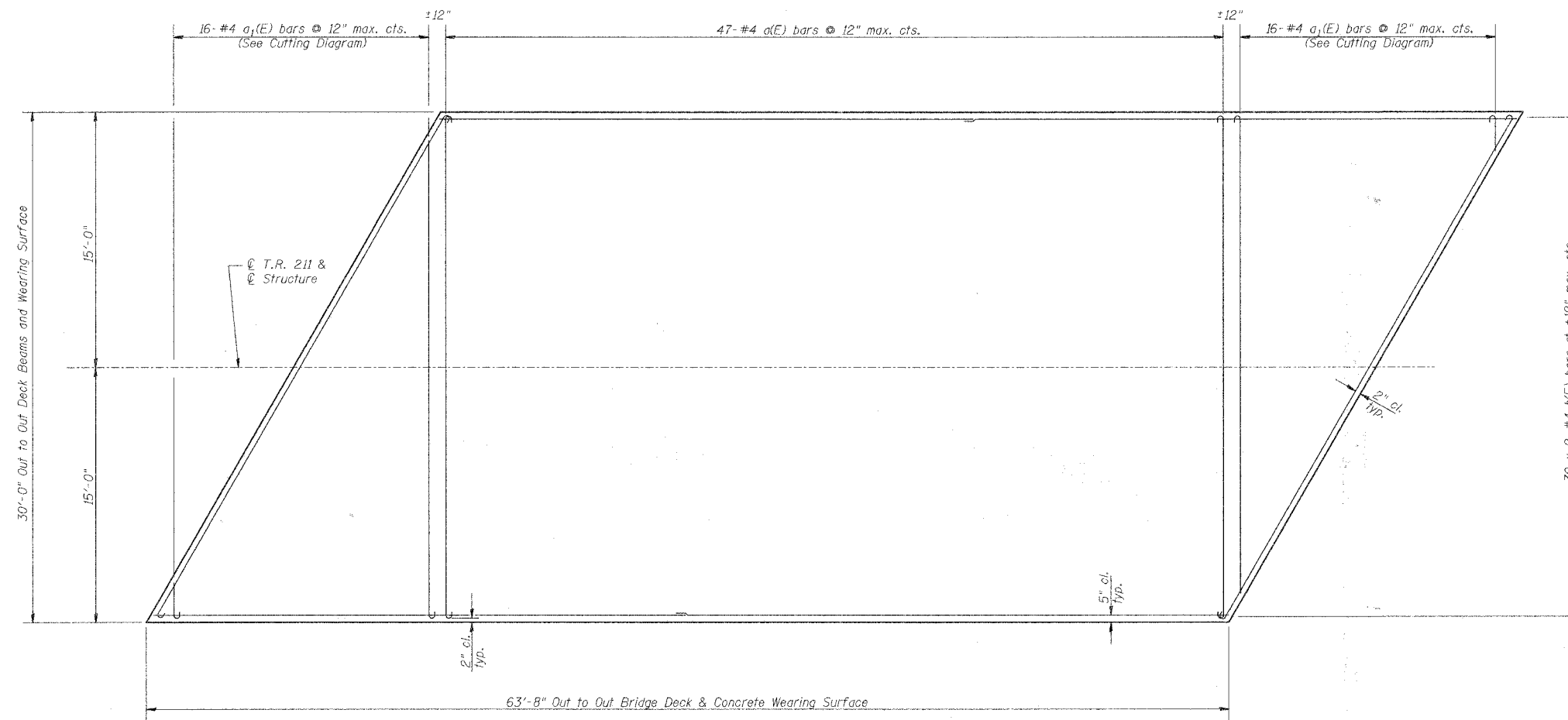
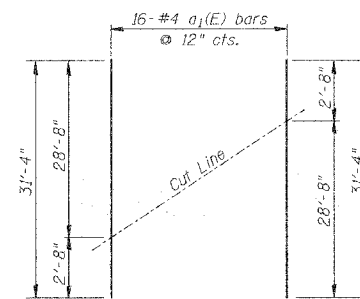
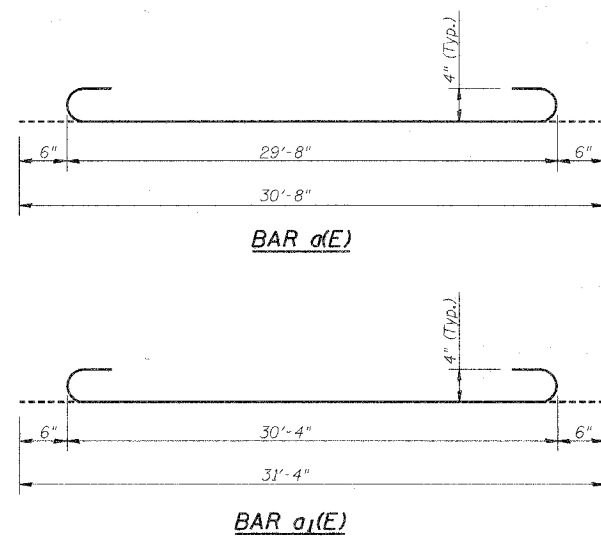


ROUTE NO.	SECTION	COUNTY	TOTAL SHEETS	SHEET NO.
CS #900	05-00205-00-BR	MACON	23	19
FED. ROAD DIST. NO.	ILLINOIS PROJECT: BRM-5169(40)		CONTRACT NO. 95542	



**DECK PLAN**



**CUTTING DIAGRAM**  
Order bars full length.  
Cut bars as shown and use remainder at other end of span.

**NOTES**

1. Work this Sheet with Sheet 2 of 7 and Sheet 4 of 7.
2. Formwork necessary for the wearing surface may be secured utilizing the bottom rail anchorage inserts and/or additional inserts cast into the beam. Drilling into the beam will not be permitted.
3. Reinforcement bars designated (E) shall be epoxy coated.
4. Bars indicated thus 31 x 2-#4 etc. indicates 31 lines of bars with 2 lengths per line.

**MIN. BAR LAP**  
#4 = 1'-7"

**SUPERSTRUCTURE BILL OF MATERIAL**

Bar	No.	Size	Length	Shape
a(E)	47	#4	30'-8"	⌌
a1(E)	16	#4	31'-4"	⌌
b(E)	60	#4	32'-6"	—
Reinforcement Bars, Epoxy Coated			Pound	2,610
Concrete Wearing Surface			Sq. Yd.	212
Protective Coat			Sq. Yd.	212
Bridge Deck Grooving			Sq. Yd.	212

**CONCRETE WEARING SURFACE DETAILS**

Date	Designed: MJP	CS #900 (HARRY LAND ROAD) OVER TRIB. TO LAKE DECATUR SECTION 05-00205-00-BR MACON COUNTY STA. 15+93.29 PROP. STR. NO. 058-3386	Sheet No.
Revisions	Drawn: BKN		<b>3</b>
	Checked: KWB		
	Approved: KWB		
Prepared by:	<b>URS</b> 345 East Ash Avenue Decatur, IL 62526		URS Job No. 36431928