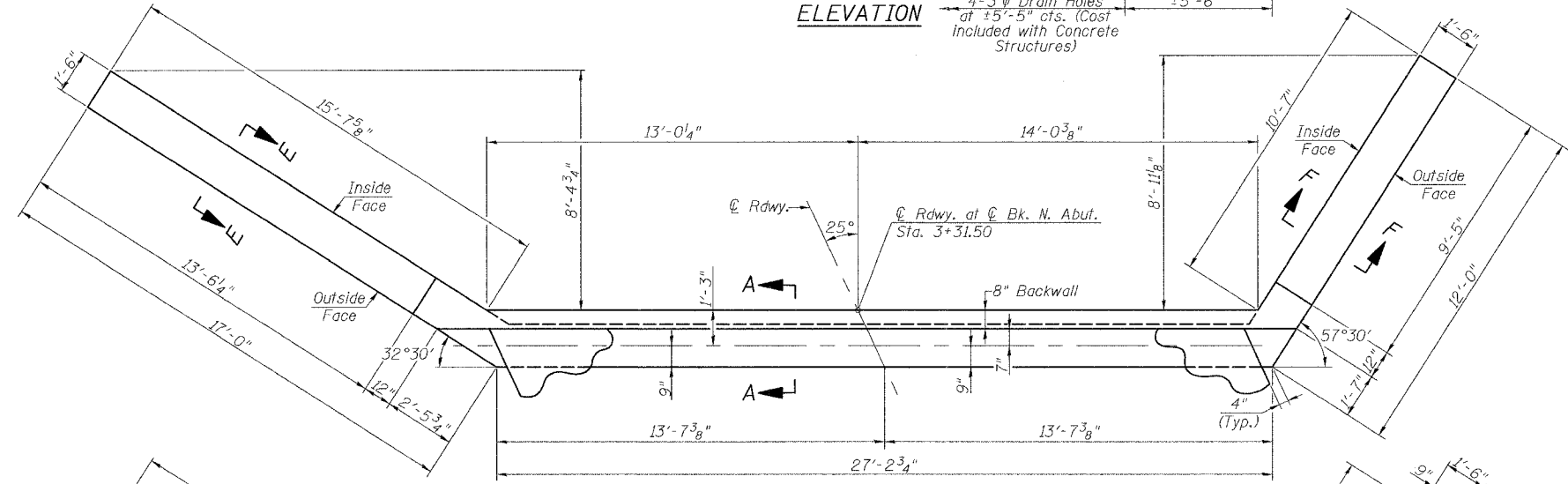
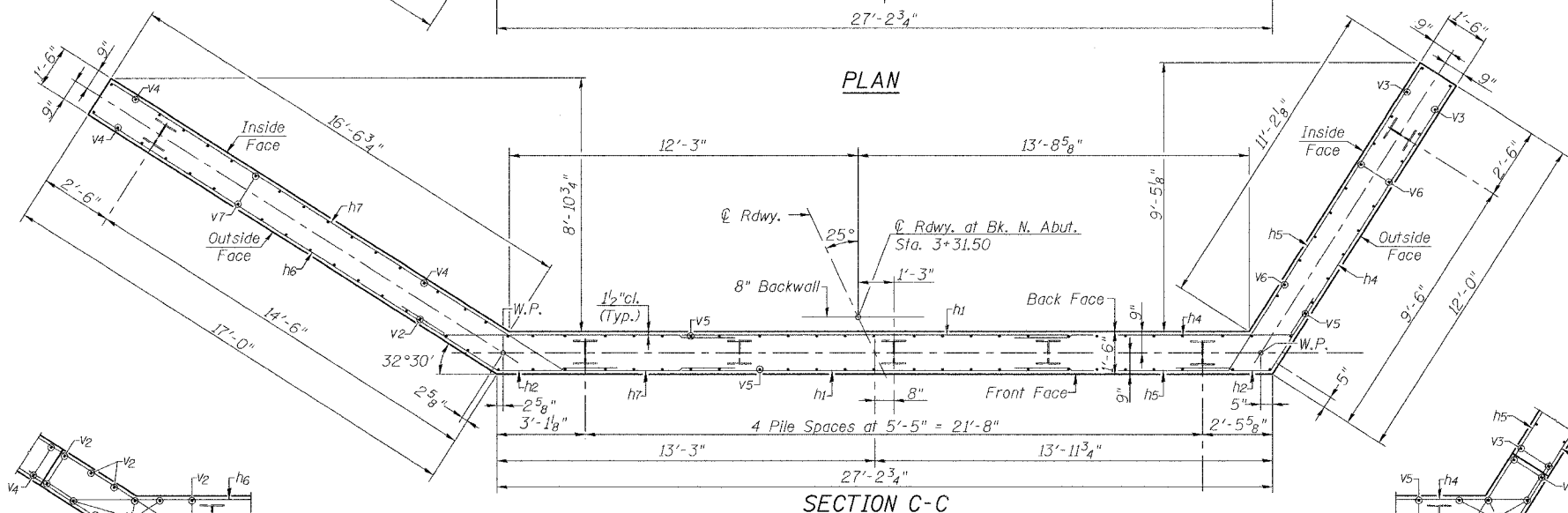


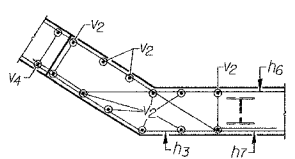
ELEVATION



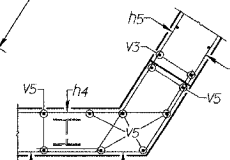
PLAN



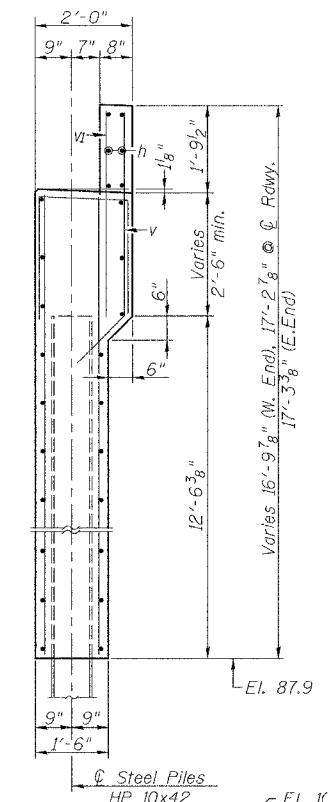
SECTION C-C



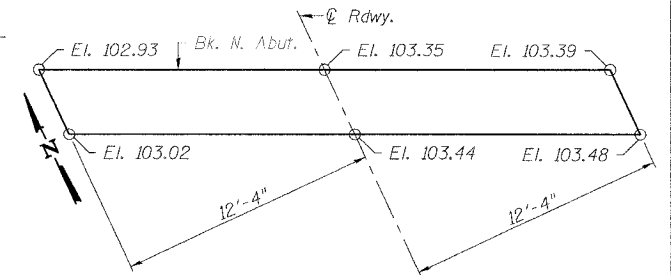
CORNER DETAIL



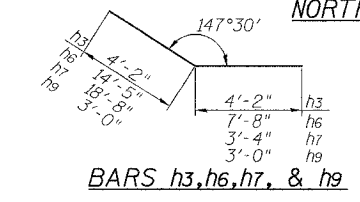
CORNER DETAIL



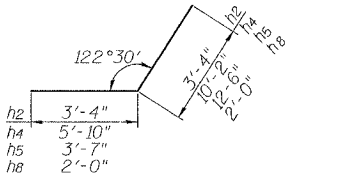
SECTION A-A



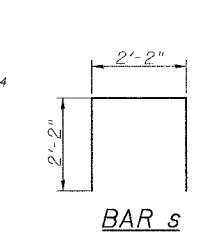
NORTH ABUTMENT BEARING SEAT DIAGRAM



BARS h3, h6, h7, & h9

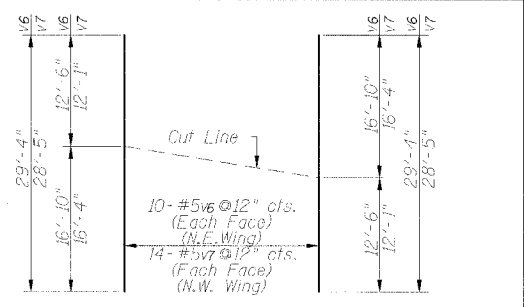


BARS h2, h4, h5, & h8



BAR s

BAR v



v6 & v7 - BAR CUT DIAGRAM

Note: Order v6 and v7 bars full length. Lay out in field as shown. Cut along cut line. Use remainder of bar in opposite face of wingwall.

PILE DATA

Type: Steel HP 10x42
 Nominal Required Bearing: 294 Kips
 Allowable Resistance Available: 98 Kips
 Est. Length: 58'
 No. of Production Piles: 6
 No. of Test Piles: 1

The test pile shall be driven to 110 percent of the Nominal Required Bearing indicated in the pile data information.

The Steel H-Piles shall be according to AASHTO M270 Grade 50.

NORTH ABUTMENT BILL OF MATERIAL

Bar	No.	Size	Length	Shape
h	6	#4	29'-11"	
h1	44	#5	20'-0"	
h2	22	#5	6'-8"	
h3	22	#5	8'-4"	
h4	22	#6	16'-0"	
h5	22	#6	16'-1"	
h6	22	#8	22'-1"	
h7	22	#8	22'-0"	
h8	6	#5	4'-0"	
h9	6	#5	6'-0"	
h10	4	#5	10'-6"	
h11	4	#5	15'-3"	
s	26	#5	6'-6"	
v	30	#5	6'-0"	
v1	30	#5	3'-6"	
v5	59	#5	14'-8"	
v6	10	#5	29'-4"	
v7	14	#5	28'-5"	
Reinforcement Bars			Pound	7300
Concrete Structures			Cu. Yd.	49.5
Furnishing Steel Piles HP10x42			Foot	348
Driving Steel Piles			Foot	348
Test Pile Steel HP 10x42			Each	1
Structure Excavation			Cu. Yd.	63

FILE NAME =	USER NAME = #USER#	DESIGNED -	REVISED -
#FILEL#		DRAWN -	REVISED -
	PLOT SCALE = #SCALE#	CHECKED -	REVISED -
	PLOT DATE = #DATE#	DATE -	REVISED -

DESIGNED -	REVISED -
DRAWN -	REVISED -
CHECKED -	REVISED -
DATE -	REVISED -

Allen Henderson & Associates, Inc.
 Civil and Structural Engineers Springfield, IL
 62703 Phone: (217)544-8033 IL Design Firm
 No. 184-001907

NORTH ABUTMENT
 SCALE: _____ SHEET NO. 8 OF 12 SHEETS STA. 1+40 TO STA. 5+10