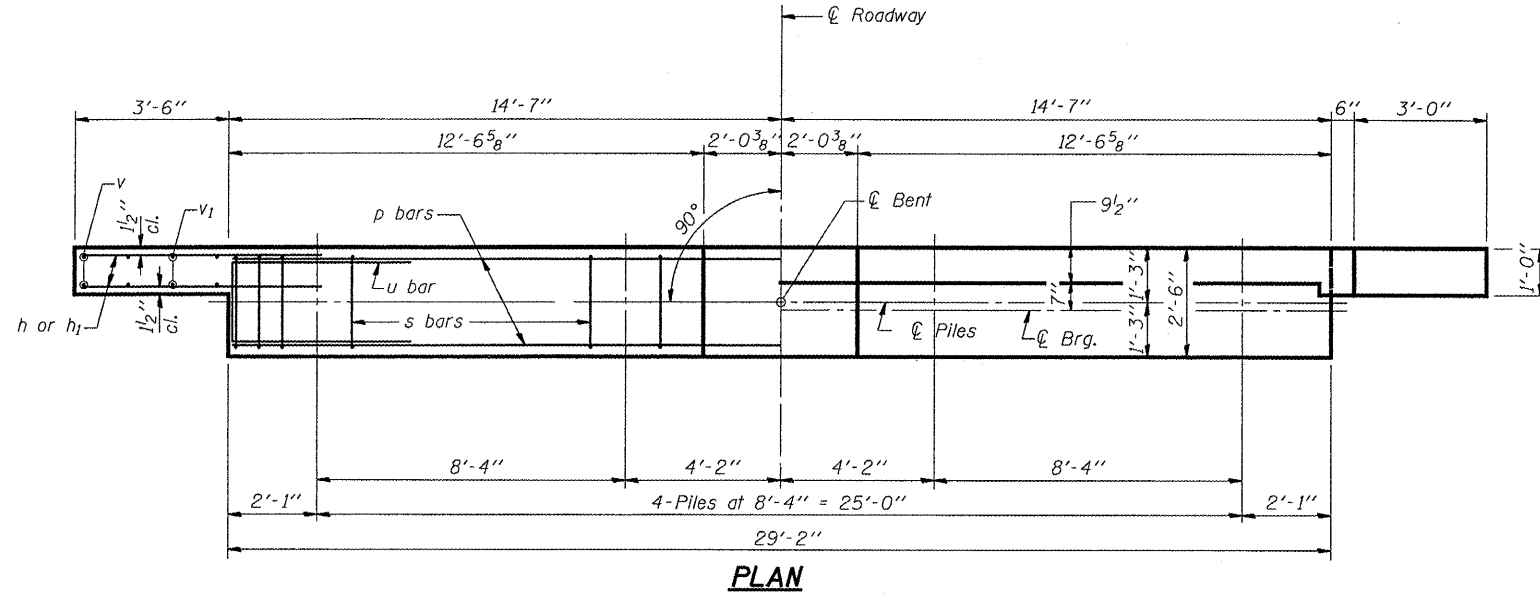


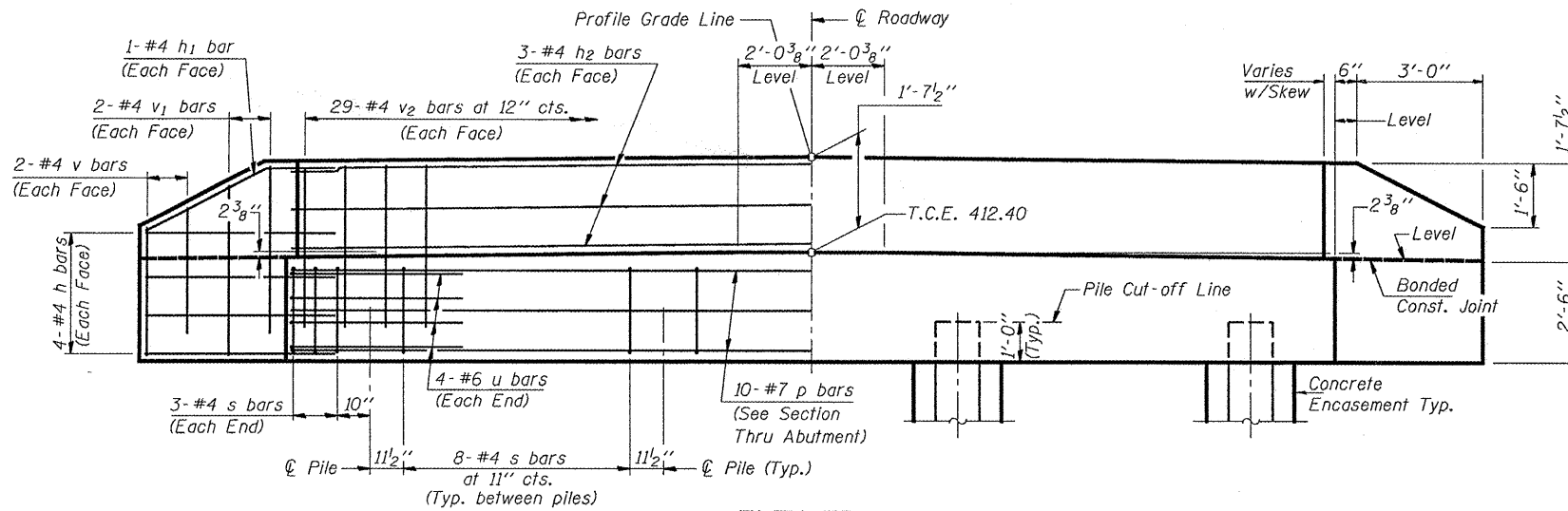
STATE OF ILLINOIS
DEPARTMENT OF TRANSPORTATION

ROUTE NO.	SECTION	COUNTY	TOTAL SHEETS	SHEET NO.
F.A.S. 863	*	RANDOLPH		11
FED. ROAD DIST. NO. 7 ILLINOIS FED. AID PROJECT				
* 06-00039-05-BR				

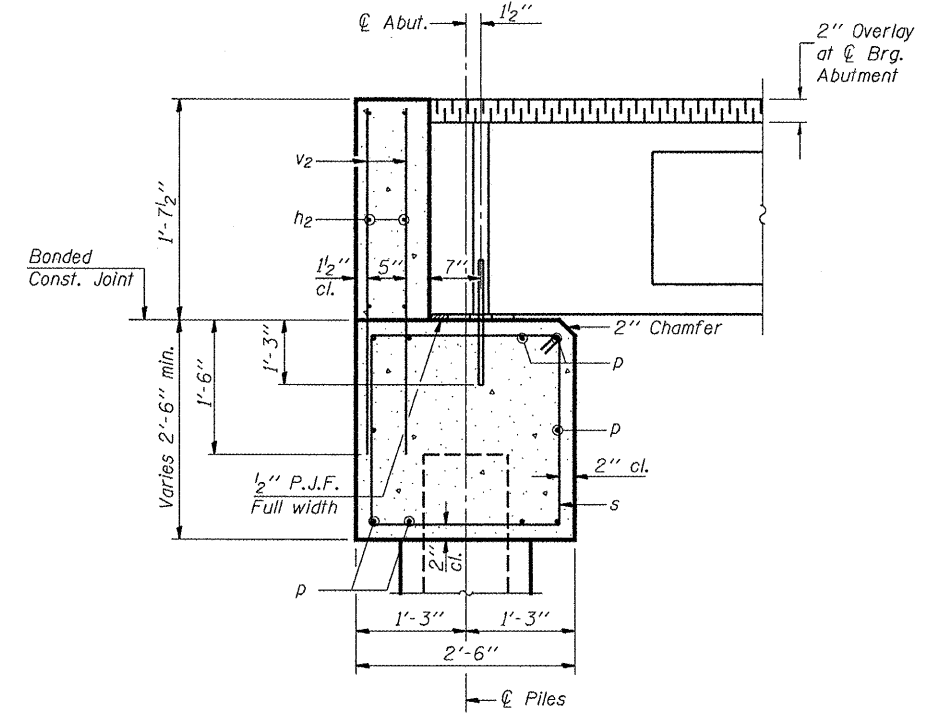
14 SHEETS



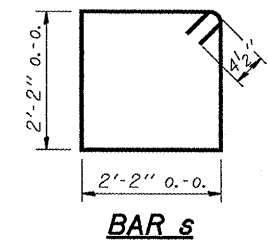
PLAN



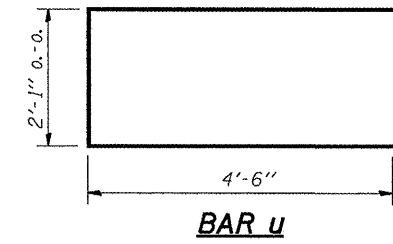
ELEVATION



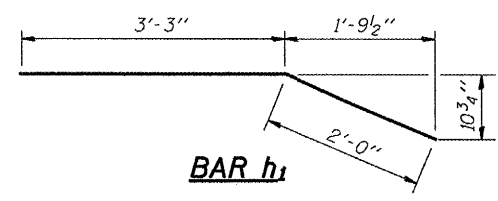
SECTION THRU ABUTMENT
(At Right Angles)



BAR s



BAR u



BAR h1

BILL OF MATERIAL
FOR ONE ABUTMENT

Bar No.	Size	Length	Shape
h	16 #4	5'-0"	—
h1	4 #4	5'-3"	—
h2	6 #4	28'-10"	—
p	10 #7	28'-10"	—
s	30 #4	9'-5"	□
u	8 #6	11'-1"	□
v	8 #4	2'-8"	—
v1	8 #4	3'-9"	—
v2	58 #4	3'-5"	—
Concrete Structures		9.9 Cu. Yds.	
Reinforcement Bars		1260 Lb.	
Concrete Encasement		1.4 Cu. Yds.	

NOTES

- The Backwall and the portion of the Wingwalls above the bonded construction joint shall be cast against the in-place beam.
- Reinforcement bars shall conform to the requirements of ASTM A706 Grade 60 (IL Modified)
- Space reinforcement in cap to miss anchor bolts.
- For details of piles and concrete encasement, see Sheet 9 of 10.

DESIGN STRESSES

f'c = 3,500 psi
fy = 60,000 psi

DESIGNED MJT	May 1, 2008
CHECKED JSB	EXAMINED <i>Carl Provey</i> ENGINEER OF STRUCTURAL SERVICES
DRAWN SMS	PASSED <i>Ralph E. Anderson</i> ENGINEER OF BRIDGES AND STRUCTURES
CHECKED JSB	

ABUTMENTS
STR. NO. 079-3195
F.A.S. ROUTE 863 OVER
COX CREEK DRAIN DITCH
SECTION 06-00039-05-BR
RANDOLPH COUNTY
STA. 47+16.90