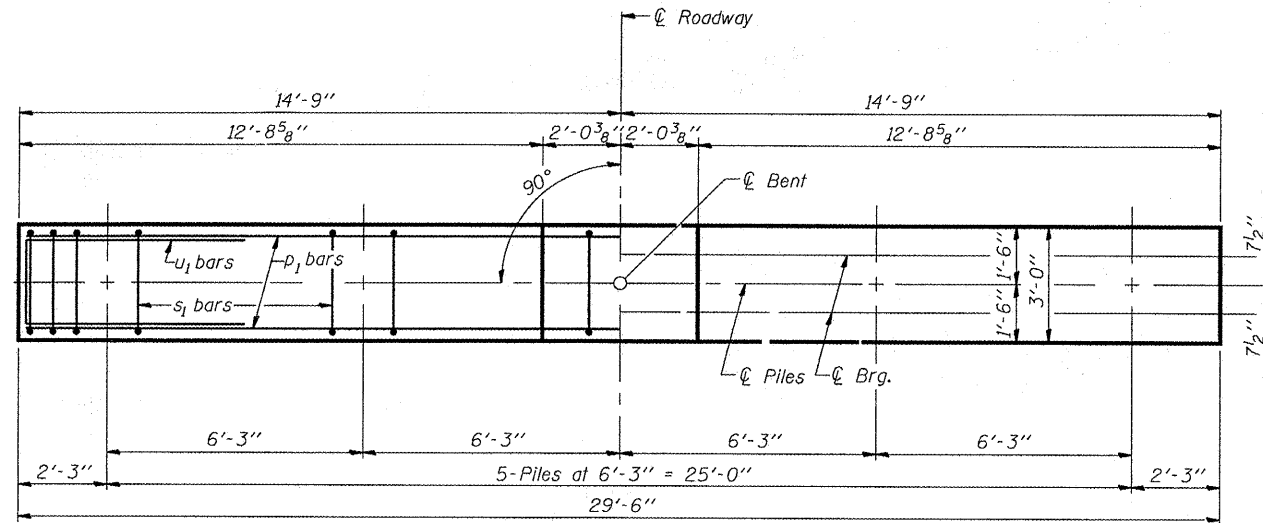
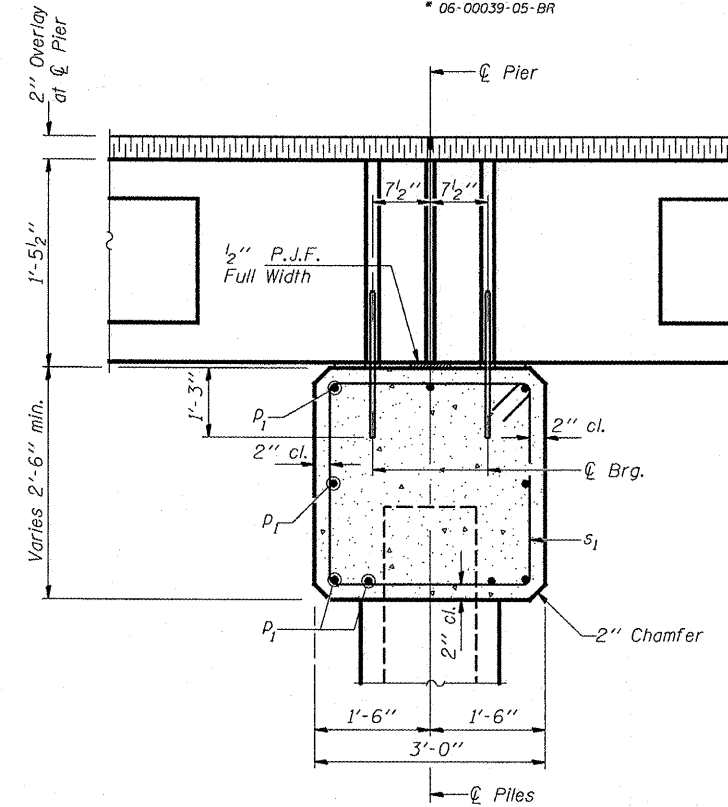


STATE OF ILLINOIS  
DEPARTMENT OF TRANSPORTATION

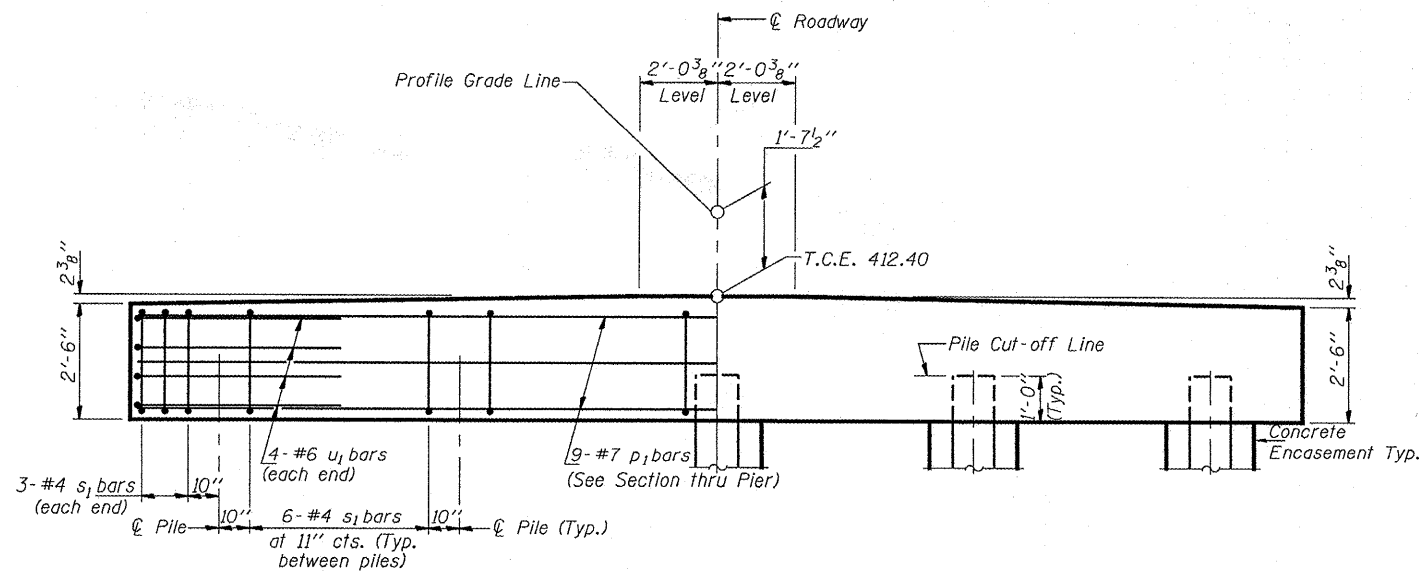
ROUTE NO.	SECTION	COUNTY	TOTAL SHEETS	SHEET NO.
F.A.S. 863	*	RANDOLPH		12
14 SHEETS				
FED. ROAD DIST. NO. 7	ILLINOIS	FED. AID PROJECT		
* 05-00039-05-BR				



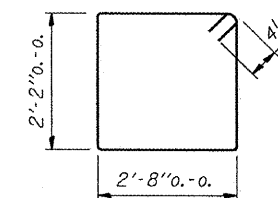
**PLAN**



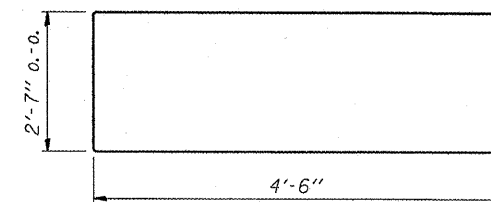
**SECTION THRU PIER**  
(At Right Angles)



**ELEVATION**



**BAR s<sub>1</sub>**



**BAR u<sub>1</sub>**

**BILL OF MATERIAL  
FOR ONE PIER**

Bar	No.	Size	Length	Shape
p <sub>1</sub>	9	#7	29'-2"	—
s <sub>1</sub>	30	#4	10'-5"	□
u <sub>1</sub>	8	#6	11'-7"	—
Concrete Structures			8.6	Cu. Yds.
Reinforcement Bars			890	Lb.
Concrete Encasement			7.3	Cu. Yds.

**NOTES**

1. Reinforcement bars shall conform to the requirements of ASTM A706 Grade 60 (IL Modified)
2. For details of piles and concrete encasement, see Sheet 9 of 10.

DESIGNED	MJT
CHECKED	JSB
DRAWN	SMS
CHECKED	JSB

May 1, 2008  
EXAMINED *A. Carl Hansen*  
ENGINEER OF STRUCTURAL SERVICES  
PASSED *Ralph E. Anderson*  
ENGINEER OF BRIDGES AND STRUCTURES

**DESIGN STRESSES**

f'<sub>c</sub> = 3,500 psi  
f<sub>y</sub> = 60,000 psi

**PIERS**  
**STR. NO. 079-3195**  
**F.A.S. ROUTE 863 OVER**  
**COX CREEK DRAIN DITCH**  
**SECTION 06-00039-05-BR**  
**RANDOLPH COUNTY**  
**STA. 47+16.90**