

F.A.P. R.T.E.	SECTION	COUNTY	TOTAL SHEETS	SHEET NO.
066	21B-R	MCHENRY	40	1
FED. ROAD DIST. NO. 1	ILLINOIS	CONTRACT NO. 60V25		
D-91-532-12			* 40 of 41	

FOR INDEX OF SHEETS, SEE SHEET NO. 2

IMPROVEMENT LOCATED WITHIN UNINCORPORATED MCHENRY COUNTY

STATE OF ILLINOIS
DEPARTMENT OF TRANSPORTATION
DIVISION OF HIGHWAYS
PROPOSED
HIGHWAY PLANS
F.A.P. 066: US ROUTE 14
OVER LAWRENCE CREEK TRIBUTARY
SECTION: 21B-R
PROJECT NO.: ACF-0066(008)
BOX CULVERT REPLACEMENT
MCHENRY COUNTY
C-91-532-12

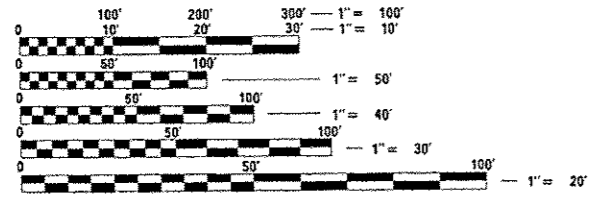


TRAFFIC DATA
US ROUTE 14
2012 ADT = 4,450
POSTED SPEED LIMIT = 55 MPH
DESIGN SPEED LIMIT = 60 MPH

BEGIN PROJECT:
US ROUTE 14
STA 99+45

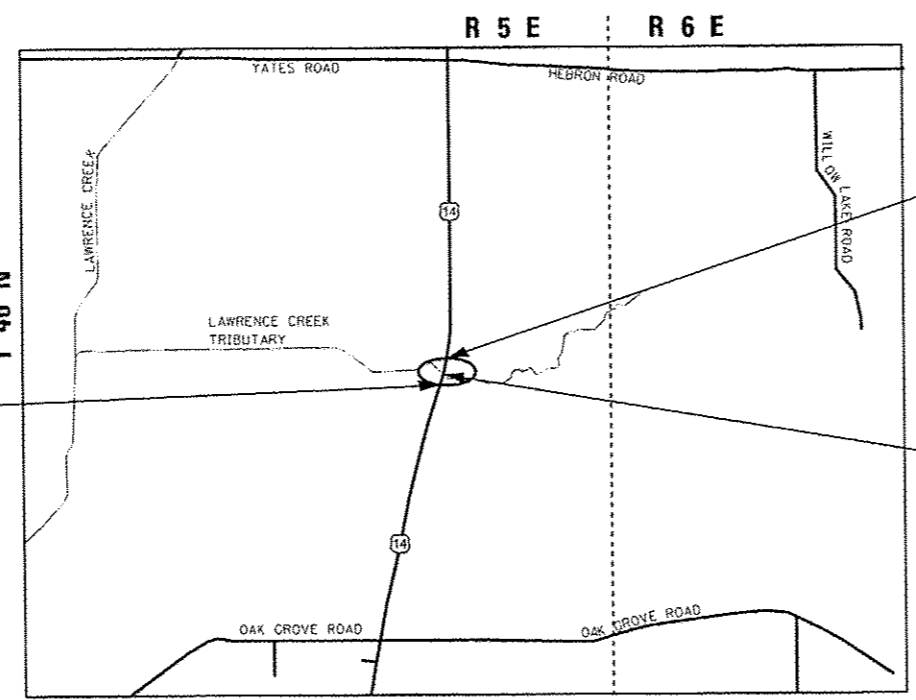
END PROJECT:
US ROUTE 14
STA 100+45

BOX CULVERT EXIST. SN 056-2001
BOX CULVERT PROP. SN 056-0086



FULL SIZE PLANS HAVE BEEN PREPARED USING STANDARD ENGINEERING SCALES. REDUCED SIZED PLANS WILL NOT CONFORM TO STANDARD SCALES. IN MAKING MEASUREMENTS ON REDUCED PLANS, THE ABOVE SCALES MAY BE USED.

J.U.L.I.E.
JOINT UTILITY LOCATION INFORMATION FOR EXCAVATION
1-800-892-0123
OR 811



LOCATION MAP
NOT TO SCALE
CHEMUNG TOWNSHIP

GROSS LENGTH OF PROJECT = 100 FT = 0.0189 MILE
NET LENGTH OF PROJECT = 100 FT = 0.0189 MILE

PROJECT MANAGER: ISSAM RYAN (847) 705-4178
PROJECT ENGINEER: ROBERT BORO (847) 705-4237

CONTRACT NO. 60V25


MILLENNIA PROFESSIONAL SERVICES OF ILL., LTD.
 EMMANUEL GOMEZ, P.E.
 IL. LIC. NO. 062-049155
 EXPIRES 11/30/2015
 SIGNED: *Emmanuel Gomez*
 DATE: 5/2/2014
 SIGNATURE AND SEAL APPLIES TO DRWG. 1 TO 8, 13 TO 15, 39 TO 40

HBM ENGINEERING GROUP, LLC.
 DR. MOUSSA A. ISSA, S.E.
 IL. LIC. NO. 081-005738
 EXPIRES 11/30/2014
 SIGNED: *Moussa A. Issa*
 DATE: 05/02/2014
 SIGNATURE AND SEAL APPLIES TO DRWG. 21 TO 31

ATLAS ENGINEERING GROUP, LTD.
 JIAN XI, P.E.
 IL. LIC. NO. 062-058208
 EXPIRES 11/30/2015
 SIGNED: *Jian Xi*
 DATE: 05/02/2014
 SIGNATURE AND SEAL APPLIES TO DRWG. 9 TO 12, 16 TO 20

STATE OF ILLINOIS
 DEPARTMENT OF TRANSPORTATION
 DIVISION OF HIGHWAYS

SUBMITTED *May 5 2014*
John Fortmann, Jr.
 DEPUTY DIRECTOR OF HIGHWAYS, REGION ENGINEER
June 27 2014
John D. Baranzelli, P.E., PE
 acting ENGINEER OF DESIGN AND ENVIRONMENT
June 27 2014
Omer Osman, P.E., PE
 DIRECTOR OF HIGHWAYS, CHIEF ENGINEER


MILLENNIA PROFESSIONAL SERVICES
 2600 Warrenville Road, Suite 203
 Downers Grove, IL 60515
 630.705.0110 voice, 630.839.2566 fax
 www.mps-il.com

PRINTED BY THE AUTHORITY
OF THE STATE OF ILLINOIS

Rev.