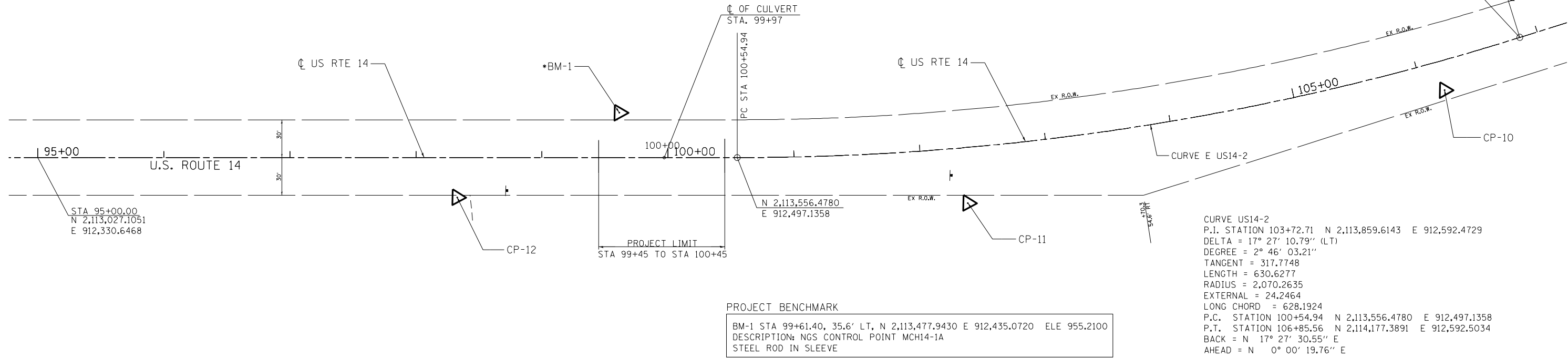
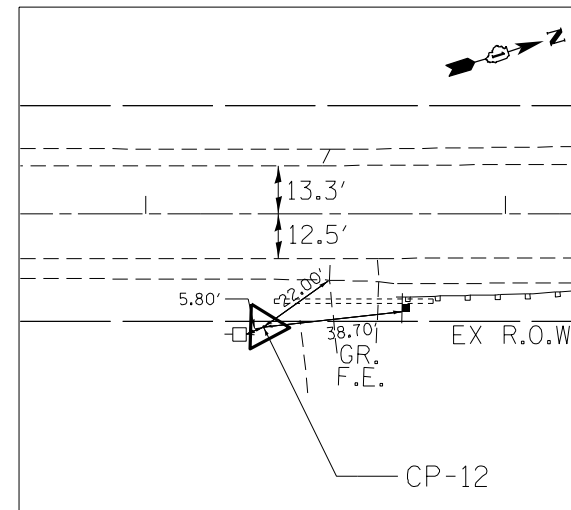
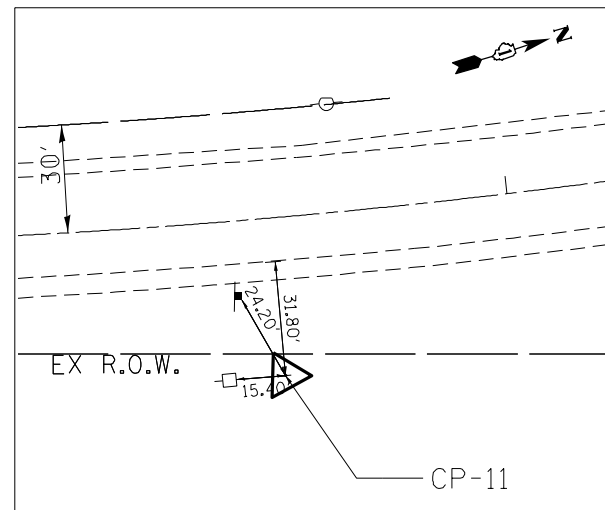
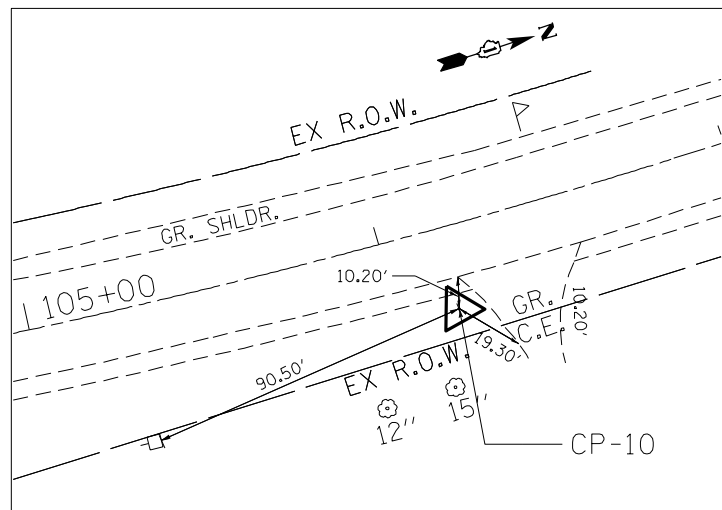


\*THE ENGINEER SHALL CONTACT IDOT'S SURVEYOR,  
RICHARD KANTHAPHIXAY AT 847-705-4340 TO ARRANGE TO  
HAVE THIS SURVEY MONUMENT RELOCATED PRIOR TO COMMENCEMENT  
OF CONSTRUCTION.



POINT	NORTHING	EASTING	STATION	ELEVATION	OFFSET	DESCRIPTION
CP-10	2,114,107.872	912,614.451	200+22.58	968.193	29.25 RT	REBAR, 360' NORTH OF CP 11, EAST SIDE OF US 14
CP-11	2,113,720.227	912,586.416	109+71.48	957.275	29.63 RT	REBAR, ABOUT 300' NORTH OF CREEK, EAST SIDE OF US 14
CP-12	2,113,335.068	912,460.516	113+13.47	955.039	44.34 LT	REBAR, ABOUT 100' SOUTH OF CREEK, ABOUT 12' EAST OF US 14 EOP



FILE NAME = P:\2011\ME11007\_Ver-Vor-PhI\ICADD\W006\_US14\Shs\06-D160V25-sht-Align.dgn  
PLOT SCALE = 80.0000" / 1"  
USER NAME = Millennia Professional Services

2600 Warrenville Road, Suite 203, Downers Grove, IL 60515  
630.785.0110 voice, 630.839.2566 fax  
www.mps-ill.com

**MILLENNIA PROFESSIONAL SERVICES**

DESIGNED - TVN/MG	REVISED -
DRAWN - MG/JP	REVISED -
CHECKED - TVN	REVISED -
DATE - 3/14/2014	REVISED -

**STATE OF ILLINOIS  
DEPARTMENT OF TRANSPORTATION**

**US ROUTE 14 OVER LAWRENCE CREEK TRIBUTARY  
ALIGNMENTS, TIES AND BENCHMARKS**

SCALE: 1"=40' SHEET NO. 1 OF 1 SHEETS STA. TO STA.

F.A.P. RTE.	SECTION	COUNTY	TOTAL SHEETS	SHEET NO.
066	21B-R	MCHENRY	40	6
CONTRACT NO. 60V25				

FED. ROAD DIST. NO. 1 | ILLINOIS | FED. AID PROJECT

P:\2011\ME11007\_Ver-Vor-PhI\ICADD\W006\_US14\Shs\06-D160V25-sht-Align.dgn