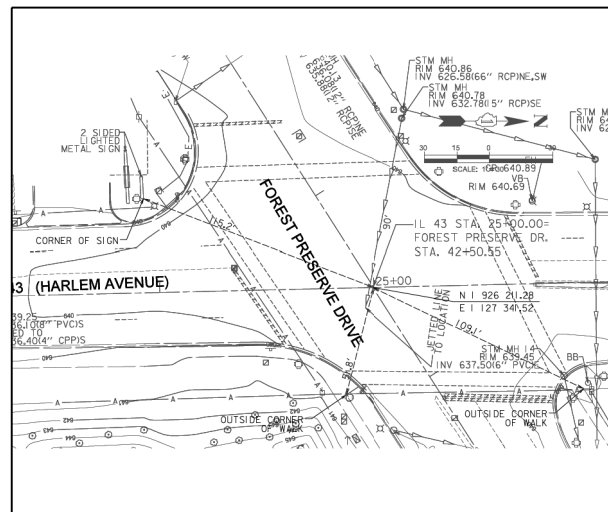


ALIGNMENT TIES



ALIGNMENT TIES

CONTROL POINTS

CP 1	N 1925864.4420	E 1127315.5950
CP 2	N 1926103.2410	E 1127307.6560
CP 3	N 1925850.7370	E 1127389.0920
CP 4	N 1926190.7010	E 1127383.8830

IL. 43	PT# A10	N 1925662.5538	E 1127354.4570	STA. 19+51.12
	PT# A11	N 1926321.7936	E 1127338.9242	STA. 26+10.55
IL. 19	PT# A15	N 1925812.4349	E 1127125.5869	STA. 30+00.00
	PT# A16	N 1925820.4771	E 1127630.6740	STA. 35+05.15
FOREST PRESERVE DR.	PT# A20	N 1926072.2368	E 1127123.6300	STA. 39+92.07
	PT# A21	N 1926378.9756	E 1127604.3220	STA. 45+62.29

BENCHMARKS

SOURCE BENCHMARK:
CITY OF CHICAGO BENCHMARK
BM 228
5.2' WEST OF WEST LINE N. NEVA AVE. AND
9.2' SOUTH OF N. LINE OF BYRON ST.
MARK DESCRIPTION
YEAR BENCHMARK ELEVATION FIXED 1979
ELEV. 63.27

SITE BENCHMARK:
SITE BM1
SCRIBED CROSS CUT ON PAVEMENT AT
THE NORTHEAST CORNER OF IRVING PARK RD.
AND HARLEM AVE.
ELEV. 60.71

SITE BM2
SCRIBED CROSS CUT ON PAVEMENT AT THE
SOUTHEAST CORNER OF HARLEM AVE. AND
FOREST PRESERVE DRIVE.
ELEV. 61.32

FILE NAME =	USER NAME = guillaumejp	DESIGNED -	REVISED -
et:\pw\work\p\dot\guillaumejp\d0391037\036814-sht-plan.dgn	36814-sht-plan.dgn	DRAWN -	REVISED -
Default	PLOT SCALE = 100.0000' / in.	CHECKED -	REVISED -
	PLOT DATE = 6/4/2014	DATE -	REVISED -

STATE OF ILLINOIS
DEPARTMENT OF TRANSPORTATION

ALIGNMENT AND TIES
IL. ROUTE 43 (HARLEM AVE.) FOREST PRESERVE DR. - IL. RTE. 19
SCALE: 1"=50' SHEET OF SHEETS STA. TO STA.

F.A.P. RTE.	SECTION	COUNTY	TOTAL SHEETS	SHEET NO.
348	3134-T (14)	COOK	16	5
CONTRACT NO. 60Y36				ILLINOIS FED. AID PROJECT