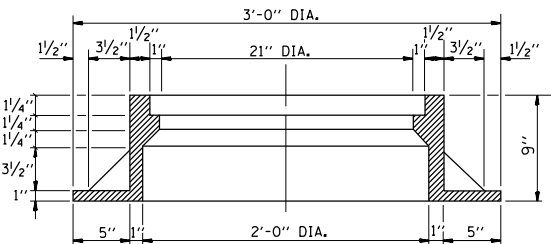


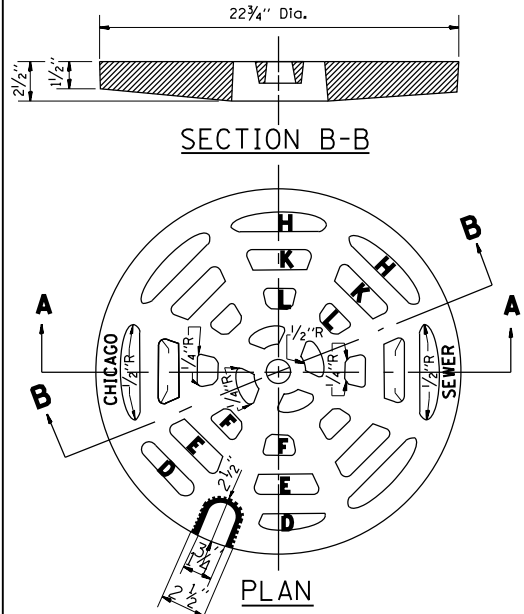
PLAN



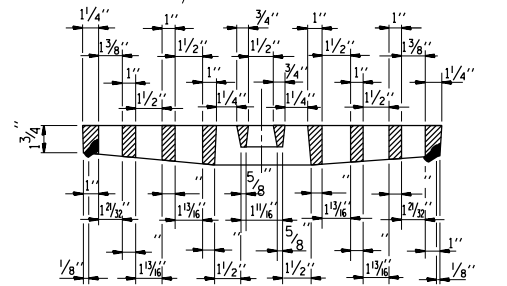
SECTION A-A

NOTE: METAL PLATES MUST BE FURNISHED FOR PERFORATED LIDS ON MANHOLES

CHICAGO STANDARD MANHOLE FRAME
SCALE: 1/2"=1'-0"
MATERIAL: CAST IRON

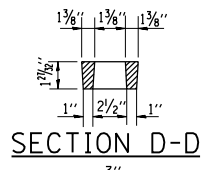


PLAN

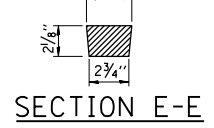


SECTION A-A

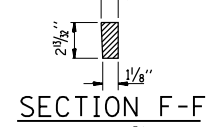
PERFORATED LID FOR CATCH BASINS & MANHOLES
SCALE: 2"=1'-0"
MATERIAL: CAST IRON



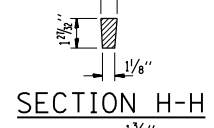
SECTION D-D



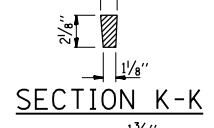
SECTION E-E



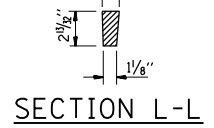
SECTION F-F



SECTION H-H

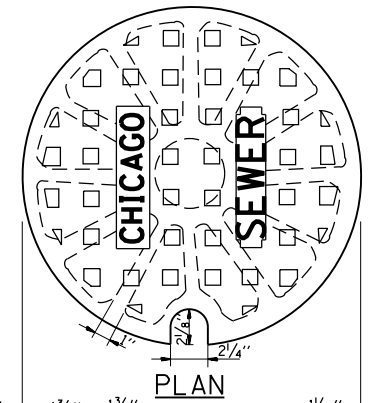


SECTION K-K

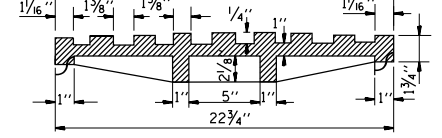


SECTION L-L

SOLID LID FOR MANHOLES
SCALE: NONE
MATERIAL: CAST IRON

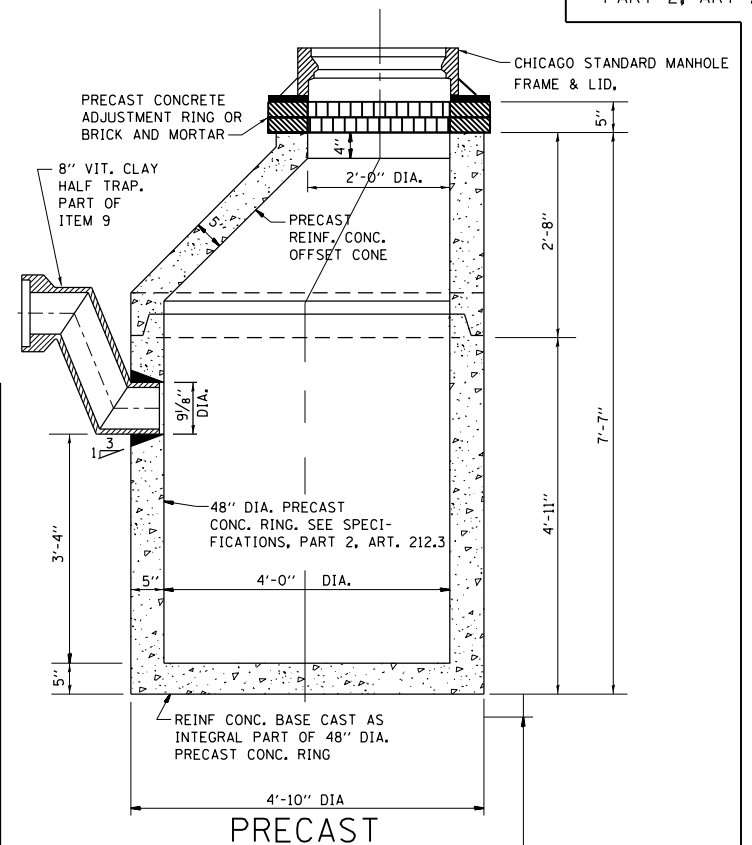


PLAN



SECTION

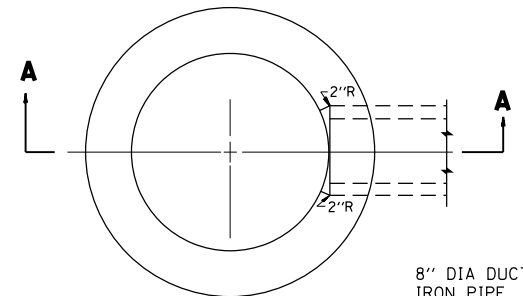
PRECAST
SCALE: 3/4"=1'-0"
ITEM 9



PRECAST

NOTE: 6" MINIMUM GRANULAR EMBEDMENT UNDER ALL CATCH BASINS

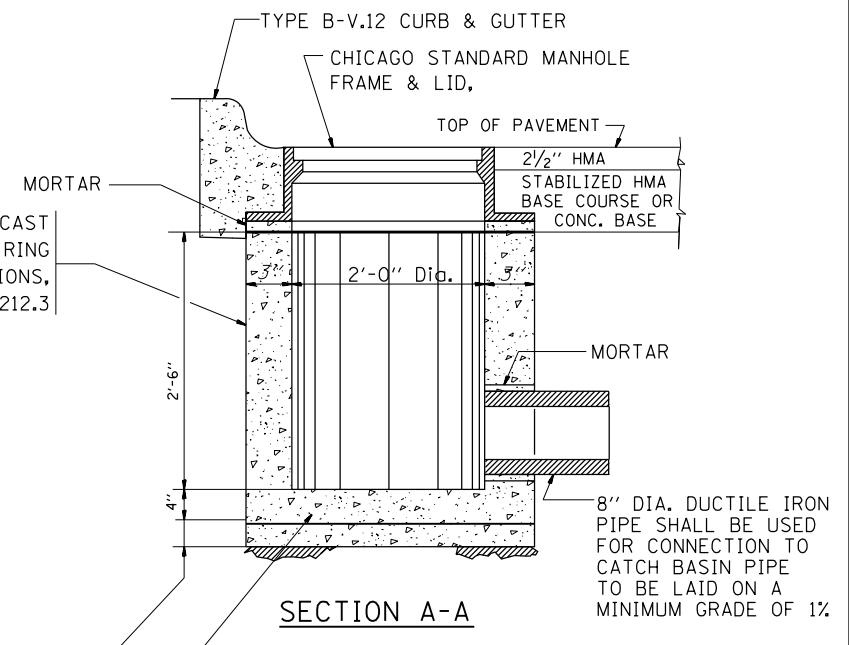
STANDARD CATCH BASINS
SCALE: 3/4"=1'-0"
ITEM 9



PLAN

(FRAME & LID NOT SHOWN)

8" DIA DUCTILE IRON PIPE, PART OF ITEM 7G



SECTION A-A

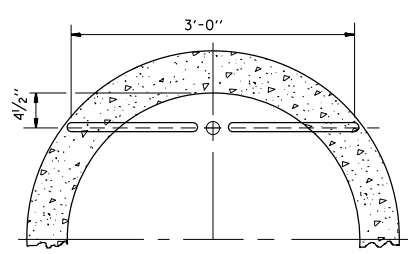
REINF. CONC. BASE CAST AS INTEGRAL PART OF 24" DIA. PRECAST CONC. RING
6" MINIMUM GRANULAR EMBEDMENT UNDER ALL INLETS. FURNISHING AND INSTALLING GRANULAR EMBEDMENT SHALL BE INCLUDED IN THE UNIT PRICE BID FOR ITEM 12

STANDARD INLETS
SCALE 1"=1'-0"
ITEM 12

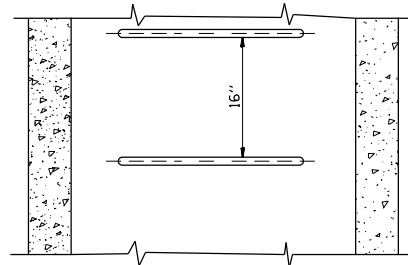
THIS INLET DETAIL IS SOMETIMES REFERRED TO AS "CHICAGO STANDARD INLET, TYPE A"

NOTE: INLETS SHALL NOT BE CONSTRUCTED UNLESS IT IS IMPOSSIBLE TO CONSTRUCT A CATCH BASIN. THE CONTRACTOR SHALL HAVE THE DEPARTMENT OF SEWERS APPROVAL BEFORE CONSTRUCTING INLETS.

CITY OF CHICAGO
DEPARTMENT OF SEWERS
ENGINEERING DIVISION

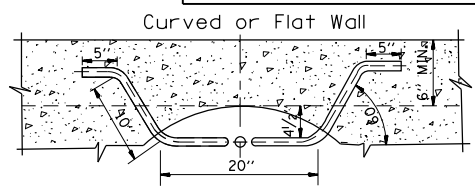


PLAN

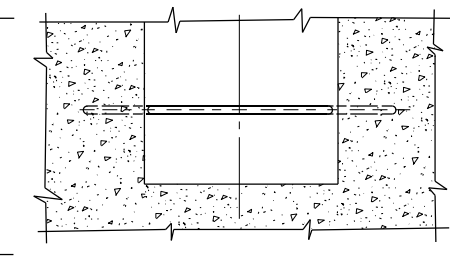


ELEVATION

TYPE X
SCALE: 1"=1'-0"

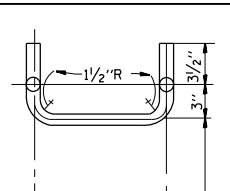


PLAN

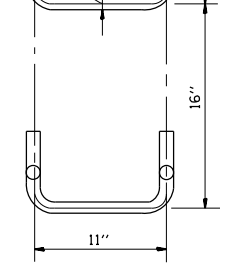


ELEVATION

TYPE Y
SCALE: 1"=1'-0"



PLAN



ELEVATION

SPACING

HANDHOLD-TYPE Z RUNG
Scale: 1/2"=1'-0"

STANDARD LADDER RUNGS

ALL LADDER RUNGS SHALL BE ALUMINUM OR GALVANIZED WROUGHT IRON AS SPECIFIED IN THE SPECIFICATIONS, PART 2, ARTICLE 214.2. RUNGS SHALL BE 1" DIAMETER OR OF A SHAPE HAVING AN EQUIVALENT CROSS-SECTIONAL AREA.

FILE NAME =	USER NAME = guillaumefp	DESIGNED - M. GOMEZ	REVISED -
es:\pwwork\pwwid\guillaumefp\d0391037\036814-sht-plan.dgn	36814-sht-plan.dgn	DRAWN -	REVISED -
	PLOT SCALE = 100.0000' / in.	CHECKED -	REVISED -
	PLOT DATE = 6/4/2014	DATE - 01-25-01	REVISED -

STATE OF ILLINOIS
DEPARTMENT OF TRANSPORTATION

CITY OF CHICAGO
CATCH BASIN, INLET AND MANHOLE DETAILS
SCALE: NONE SHEET NO. 1 OF 1 SHEETS STA. TO STA.

F.A.P. RFE.	SECTION	COUNTY	TOTAL SHEETS	SHEET NO.
348	3134-T(14)	COOK	16	13
BD600-13 (BD47)		CONTRACT NO. 60Y36		
FED. ROAD DIST. NO. 1 ILLINOIS FED. AID PROJECT				