

STATE OF ILLINOIS
DEPARTMENT OF TRANSPORTATION
DIVISION OF HIGHWAYS
**PROPOSED
HIGHWAY PLANS**

FAP ROUTE 573 (US 30)
SECTION (116)RS-5

3P MILLING & RESURFACING
DEKALB COUNTY

C-93-075-11

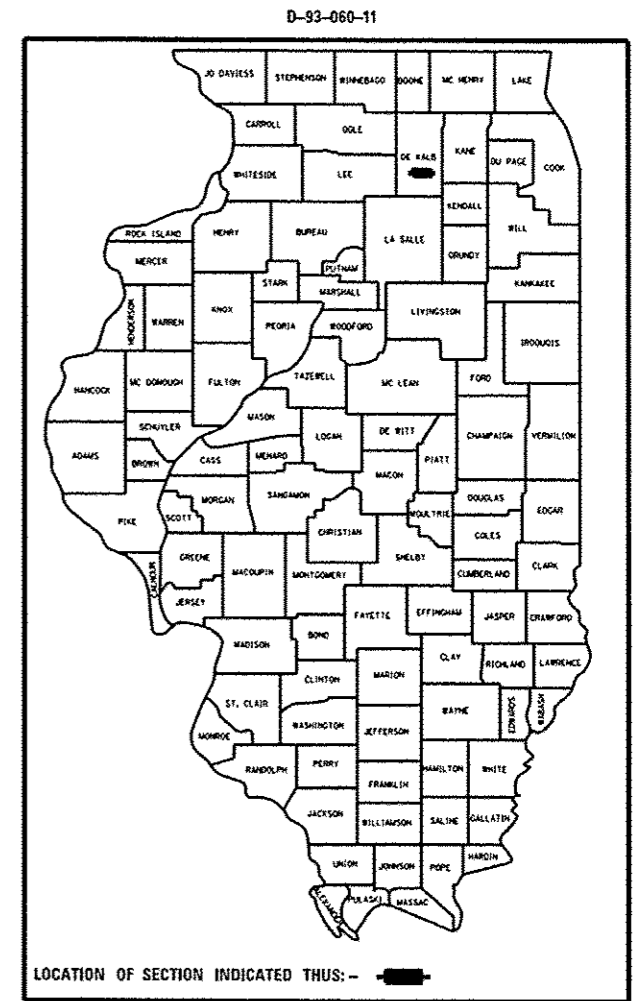
| F.A.P. RTE. | SECTION | COUNTY | TOTAL SHEETS | SHEET NO. |
|-------------|-----------|--------|--------------------|-----------|
| 573 | (116)RS-5 | DEKALB | 43 | 1 |
| ILLINOIS | | | CONTRACT NO. 66B12 | |

INDEX OF SHEETS

- 1 COVER SHEET
- 2 GENERAL NOTES
- 3-7 SUMMARY OF QUANTITIES
- 8-10 TYPICAL SECTIONS
- 11-14 SCHEDULE OF QUANTITIES
- 15-36 PLAN VIEWS
- 37-42 DETAILS
- 43 ALIGNMENTS, TIES, AND BENCHMARKS

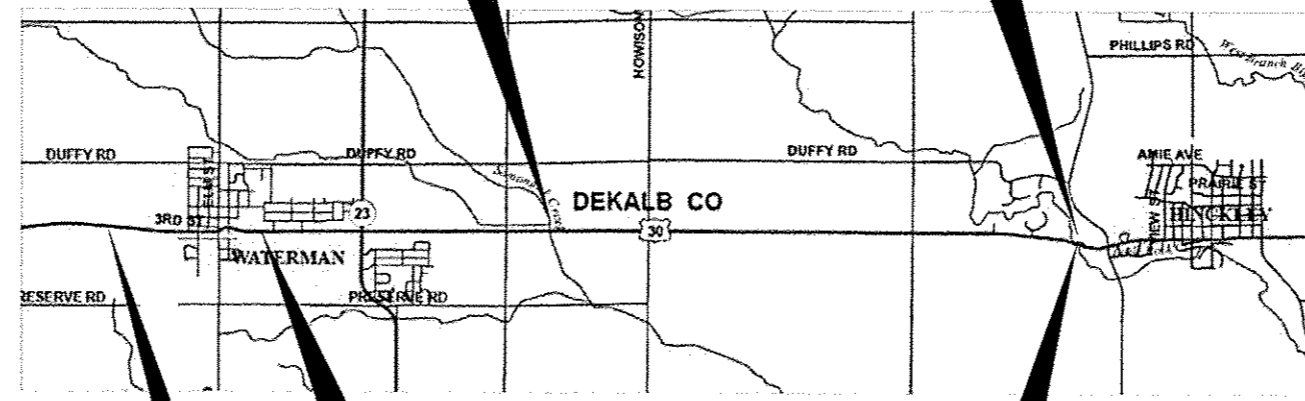
STANDARDS

- 000001-06 STANDARD SYMBOLS, ABBREVIATIONS AND PATTERNS
- 001006 DECIMAL OF AN INCH AND OF A FOOT
- 406201-01 MAILBOX TURNOUT
- 442201-03 CLASS C AND D PATCHES
- 635006-03 REFLECTOR AND TERMINAL MARKER PLACEMENT
- 635011-02 REFLECTOR MARKER AND MOUNTING DETAILS
- 642006 SHOULDER RUMBLE STRIPS, 8 INCH
- 667101-02 PERMANENT SURVEY MARKERS
- 701001-02 OFF-ROAD OPERATIONS 2L, 2W, MORE THAN 15' (4.5 m) AWAY
- 701008-05 OFF-ROAD OPERATIONS 2L, 2W, 15' (4.5 m) TO 24' (600 mm) FROM PAVEMENT EDGE
- 701011-04 OFF-ROAD MOVING OPERATIONS 2L, 2W, DAY ONLY
- 701201-04 LANE CLOSURE, 2L, 2W, DAY ONLY, FOR SPEEDS ≥ 45 MPH
- 701301-04 LANE CLOSURE, 2L, 2W, SHORT TIME OPERATIONS
- 701306-03 LANE CLOSURE, 2L, 2W, SLOW MOVING OPERATIONS DAY ONLY, FOR SPEEDS ≥ 45 MPH
- 701311-03 LANE CLOSURE, 2L, 2W, MOVING OPERATIONS - DAY ONLY
- 701326-04 LANE CLOSURE, 2L, 2W, PAVEMENT WIDENING, FOR SPEEDS ≥ 45 MPH
- 701336-06 LANE CLOSURE, 2L, 2W, WORK AREAS IN SERIES, FOR SPEEDS ≥ 45 MPH
- 701501-06 URBAN LANE CLOSURE, 2L, 2W, UNDIVIDED
- 701901-03 TRAFFIC CONTROL DEVICES
- 780001-04 TYPICAL PAVEMENT MARKINGS
- 781001-03 TYPICAL APPLICATIONS RAISED REFLECTIVE PAVEMENT MARKERS
- 782001 PRISMATIC CURB REFLECTORS
- 886001-01 DETECTOR LOOP INSTALLATIONS
- 886006-01 TYPICAL LAYOUT FOR DETECTION LOOPS



BRIDGE OMISSION
SN 019-0031
STA. 709 + 16 TO
STA. 709 + 96

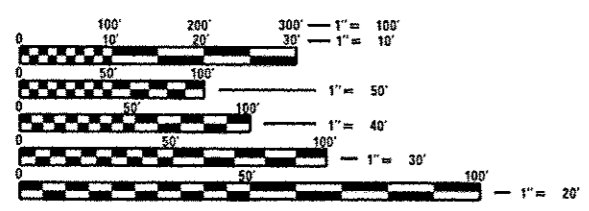
SN 019-0036



STATION EQUATION
STA. 479 + 11.86 BK =
STA. 598 + 00.85 AH

END IMPROVEMENT
STA. 903 + 38

BEGIN IMPROVEMENT
STA. 445 + 17.15



FULL SIZE PLANS HAVE BEEN PREPARED USING STANDARD ENGINEERING SCALES. REDUCED SIZED PLANS WILL NOT CONFORM TO STANDARD SCALES. IN MAKING MEASUREMENTS ON REDUCED PLANS, THE ABOVE SCALES MAY BE USED.

J.U.I.E.
JOINT UTILITY LOCATION INFORMATION FOR EXCAVATION
1-800-892-0123
OR 811

PROJECT ENGINEER : CRAIG REED, P.E.
UNIT CHIEF : PATRICK BRABOY, P.E.

CONTRACT NO. 66B12

GROSS LENGTH = 33,931.86 FT. = 6.426 MILE
NET LENGTH = 33,851.86 FT. = 6.411 MILE

FUNCTION CLASSIFICATION
RURAL MINOR ARTERIAL
2013 ADT = 4,300
P.V. = 87.1% S.U. = 3.0% M.U. = 9.9%

STATE OF ILLINOIS
DEPARTMENT OF TRANSPORTATION
DIVISION OF HIGHWAYS

SUBMITTED June 5 20 14
Paul Loete D.B.
DEPUTY DIRECTOR OF HIGHWAYS, REGION ENGINEER

June 27 20 14
John D. Baranzelle P.E.
ENGINEER OF DESIGN AND ENVIRONMENT

June 27 20 14
Cher Osmann P.E.
DIRECTOR OF HIGHWAYS, CHIEF ENGINEER

**PRINTED BY THE AUTHORITY
OF THE STATE OF ILLINOIS**