

F.A.P. RTE.	SECTION	COUNTY	TOTAL SHEETS	SHEET NO.
326	(127X)RS-3	FORD	11	1
		ILLINOIS	CONTRACT NO. 66D62	

STATE OF ILLINOIS  
DEPARTMENT OF TRANSPORTATION  
DIVISION OF HIGHWAYS  
**PROPOSED  
HIGHWAY PLANS**

FAP ROUTE 326 (IL 9/47)  
SECTION (127X)RS-3

3P MILLING AND RESURFACING  
FORD COUNTY

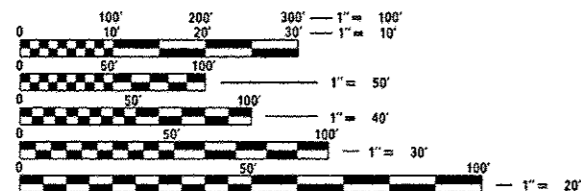
C-93-071-14

INDEX

1	COVER SHEET
2	GENERAL NOTES
3-4	SUMMARY OF QUANTITIES
5	TYPICAL SECTIONS
6	SCHEDULES
7	PAVEMENT MARKING DETAILS
8-11	DETAILS

HIGHWAY STANDARDS

000001-06	STANDARD SYMBOLS, ABBREVIATIONS AND PATTERNS
001006	DECIMAL OF AN INCH AND OF A FOOT
687101-02	PERMANENT SURVEY MARKERS
701001-02	OFF-ROAD OPERATIONS 2L, 2W, MORE THAN 15' (4.5 m) AWAY
701006-05	OFF-ROAD OPERATIONS 2L, 2W, 15' (4.5 m) TO 24" (600 mm) FROM PAVEMENT EDGE
701301-04	LANE CLOSURE, 2L, 2W, SHORT TIME OPERATIONS
701306-03	LANE CLOSURE, 2L, 2W, SLOW MOVING OPERATIONS DAY ONLY, FOR SPEEDS ≥ 45 MPH
701311-03	LANE CLOSURE, 2L, 2W, MOVING OPERATIONS - DAY ONLY
701901-03	TRAFFIC CONTROL DEVICES
781001-03	TYPICAL APPLICATIONS RAISED REFLECTIVE PAVEMENT MARKERS
782001	PRISMATIC CURB REFLECTORS



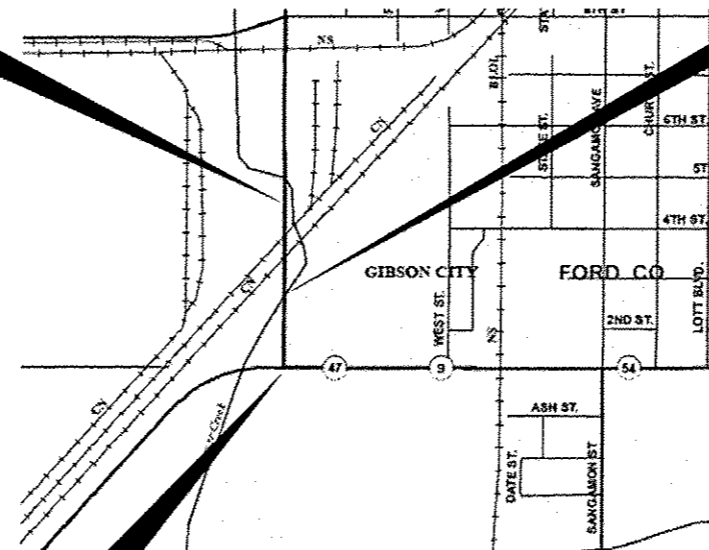
FULL SIZE PLANS HAVE BEEN PREPARED USING STANDARD ENGINEERING SCALES. REDUCED SIZED PLANS WILL NOT CONFORM TO STANDARD SCALES. IN MAKING MEASUREMENTS ON REDUCED PLANS, THE ABOVE SCALES MAY BE USED.

J.U.L.I.E.  
JOINT UTILITY LOCATION INFORMATION FOR EXCAVATION  
1-800-892-0123  
OR 811

PROJECT ENGINEER: JOE KANNEL P.E.  
UNIT CHIEF: SCOTT A. FERGUSON  
DISTRICT 3 NO. (815) 434-6131  
CONTRACT NO. 66D62

PROJECT BEGINS  
STA 2354 + 27

PROJECT ENDS  
STA 2369 + 50



GROSS LENGTH = 1523 FT. = 0.29 MILE  
NET LENGTH = 1244 FT. = 0.24 MILE

OMISSION  
SN 027-0085  
STA 2363 + 54 TO  
STA 2366 + 33



OTHER ARTERIAL  
2014 ADT = 4400  
PV = 77% SU = 12% MU = 11%

STATE OF ILLINOIS  
DEPARTMENT OF TRANSPORTATION  
DIVISION OF HIGHWAYS

SUBMITTED June 16 20 14  
Paul Lotta D.B.  
DEPUTY DIRECTOR OF HIGHWAYS, REGION ENGINEER

June 27 20 14  
John D. Baranelli, P.E.  
ENGINEER OF DESIGN AND ENVIRONMENT

June 27 20 14  
Omer Osman, P.E.  
DIRECTOR OF HIGHWAYS, CHIEF ENGINEER

PRINTED BY THE AUTHORITY  
OF THE STATE OF ILLINOIS