

08-01-14 LETTING ITEM 090

STATE OF ILLINOIS
DEPARTMENT OF TRANSPORTATION
DIVISION OF HIGHWAYS

PROPOSED SPRING ROAD REPAIR

FAP ROUTE 320 (IL 10 / IL 121)
SECTION (24) I-2

PAVEMENT PATCHING & INLETS LOGAN COUNTY

C-96-093-14

F.A.P. RTE.	SECTION	COUNTY	TOTAL SHEETS	SHEET NO.
320	-	LOGAN	15	1
		ILLINOIS	CONTRACT NO. 72H22	

(24) I-2

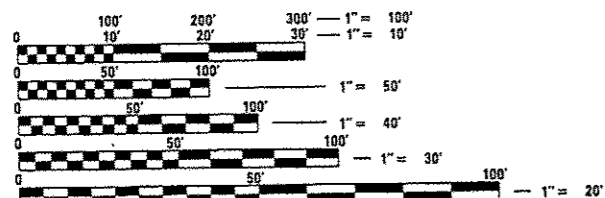
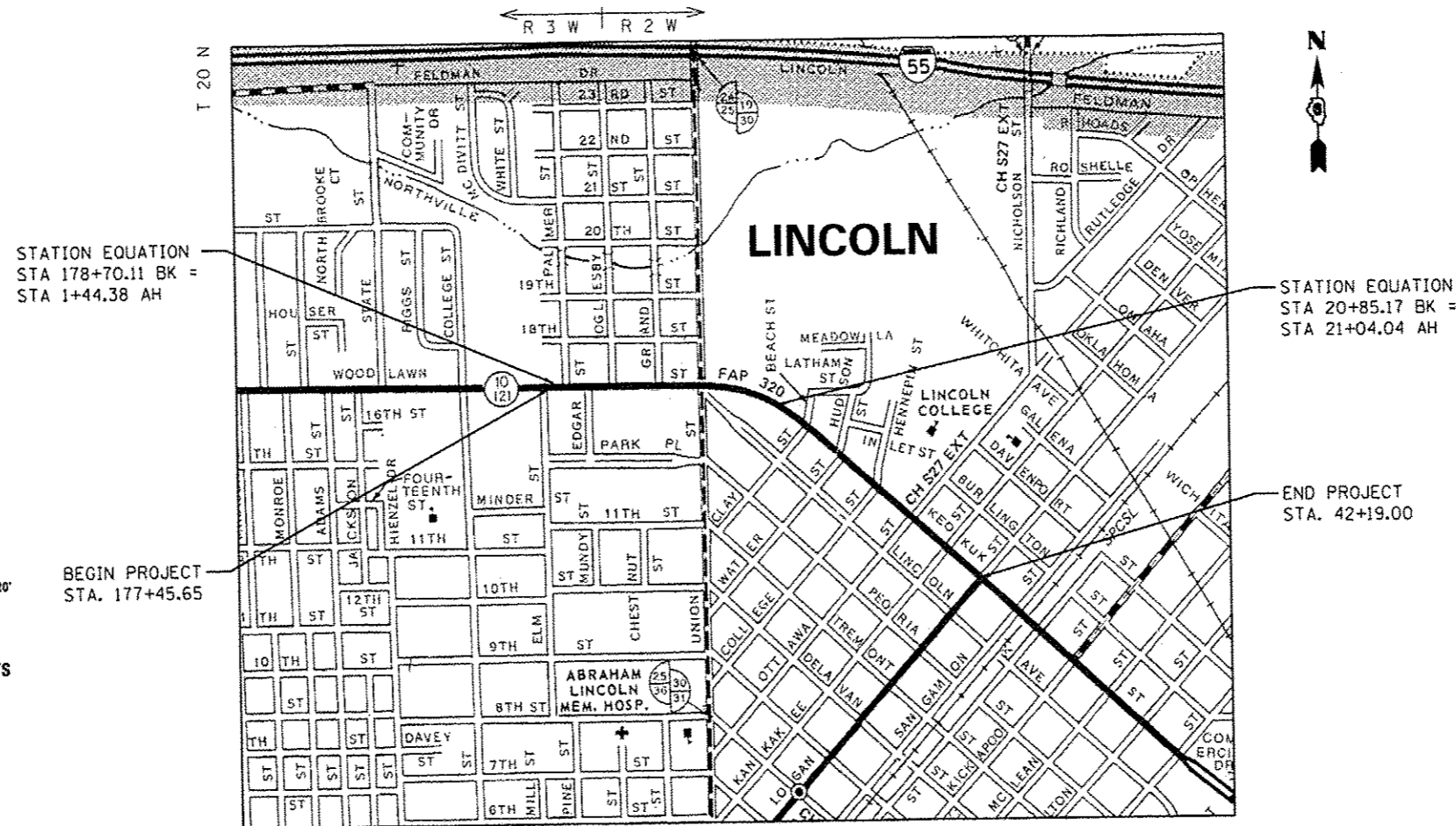
D-96-093-14



F.A.P. 320 (IL 10 & IL 121)
ADT (2013) : 14200
PV = 92.78% SU = 3.17% MU = 4.05%
SPEED LIMIT: 30 MPH (POSTED)

WHEREVER IN THESE PLANS
SECTION D6 SPRING RD REPAIR
2014-21 IS MENTIONED, IT SHALL
MEAN SECTION (24)I-2

FOR INDEX OF SHEETS, SEE SHEET NO. 2



FULL SIZE PLANS HAVE BEEN PREPARED USING STANDARD
ENGINEERING SCALES. REDUCED SIZED PLANS WILL NOT
CONFORM TO STANDARD SCALES. IN MAKING MEASUREMENTS
ON REDUCED PLANS, THE ABOVE SCALES MAY BE USED.

J.U.L.I.E.
JOINT UTILITY LOCATION INFORMATION FOR EXCAVATION
1-800-892-0123
OR 811

MAINTENANCE FIELD ENGINEER (ACTING):
MARSHALL METCALF (217) 785-5312

CONTRACT NO. 72H22

LOCATION MAP

NET LENGTH = 4181.21 FT. = 0.792 MILE

STATE OF ILLINOIS
DEPARTMENT OF TRANSPORTATION
DIVISION OF HIGHWAYS

SUBMITTED May 19 2014
Raymond
DEPUTY DIRECTOR OF HIGHWAYS, REGION ENGINEER

June 27 2014
John D. Baranzelli PE
ENGINEER OF DESIGN AND ENVIRONMENT

June 27 2014
Cher O'Sullivan PE
DIRECTOR OF HIGHWAYS, CHIEF ENGINEER

PRINTED BY THE AUTHORITY
OF THE STATE OF ILLINOIS

INDEX OF SHEETS

- 1. COVER SHEET
- 2. INDEX OF SHEETS, STANDARDS, GENERAL NOTES SIGNATURES
- 3. SUMMARY OF QUANTITY
- 4-7. TYPICAL SECTIONS
- 8. SCHEDULE OF QUANTITY
- 9-13. PLAN SHEET
- 14. CLASS C & D PATCH, STANDARD 445501 MODIFIED
- 15. INLET ADJUSTMENT DETAIL

STANDARDS

- 442201-03 CLASS C & D PATCHES
- 604066-02 FRAME AND LID TYPE 15
- 701006-05 OFF-RD OPERATIONS, 2L, 2W, 15' TO 24" FROM PAVEMENT EDGE
- 701606-09 URBAN LANE CLOSURE, MULTILANE, 2W WITH MOUNTABLE MEDIAN
- 701701-09 URBAN LANE CLOSURE, MULTILANE INTERSECTION
- 701901-03 TRAFFIC CONTROL DEVICES

GENERAL NOTES

- 1. THE PATCH SIZE AND LOCATION SHOWN ON THE PLAN SHEETS ARE FOR PLANNING PURPOSE ONLY. THE FINAL PATCH LOCATIONS SHALL BE DETERMINED BY THE ENGINEER IN THE FIELD.
- 2. THE LOCATION AND THE QUANTITY OF SUBBASE GRANULAR MATERIAL, TYPE B, (4") SHALL BE DETERMINED BY THE ENGINEER IN THE FIELD. THE LABOR AND COST OF EXTRA EXCEVATION FOR THIS WORK WILL NOT BE PAID FOR SAPERATELY. THE COST SHALL BE INCLUDED IN THE PAVEMENT PATCHING PAY ITEMS (44200144, 44200148, 44200150).
- 3. CONTRACTOR HAS AN OPTION OF CLASS C OR CLASS D PATCHING. HOWEVER, THE PATCHES SHALL BE CONSTRUCTED ACCORDING TO CLASS C AND D PATCH STANDARD 442201 (MODIFIED) ON SHEET 14.
- 4. ONLY FULL DEPTH PATCHES ARE ANTICIPATED. HOWEVER, THE LOCATION AND THE SIZE OF PARTIAL DEPTH PATCHES, LONGITUDINAL JOINT REPAIR, AND FILLING CRACKS AND HOLES SHALL BE DETERMINED BY THE ENGINEER IN THE FIELD. SURFACE MIX SHALL BE USED IN PREVIOUSLY LISTED CONDITIONS. THIS WORK SHALL BE PAID ACCORDING TO ARTICLE 109.04 OF THE STANDARD SPECIFICATIONS FOR ROAD AND BRIDGE CONSTRUCTION.

MIXTURE REQUIREMENTS

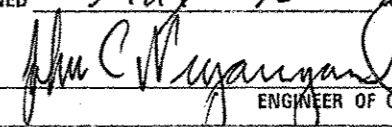
MIXTURE USE:	PAVEMENT PATCHING (TOP 1 1/2")	PAVEMENT PATCHING (LOWER LIFTS)
PG:	PG 64-22	PG 64-22
DESIGN AIR VOIDS:	4.0% @ N70	4.0% @ N70
MIXTURE COMPOSITION:	IL 9.5	IL 19.0
FRICTION AGGREGATE:	MIX "D"	N/A
QUALITY MANAGEMENT:	OC/OA	OC/OA

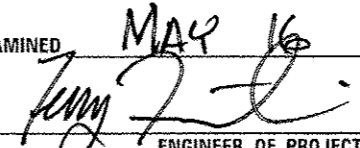
APPLICATION RATE

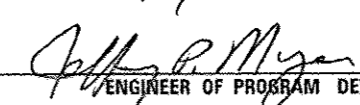
AGGREGATE - 2.05 TONS/CU YD

SIGNATURES

**STATE OF ILLINOIS
DEPARTMENT OF TRANSPORTATION
DIVISION OF HIGHWAYS
DISTRICT 6**

EXAMINED May 16th 20 14

 ENGINEER OF OPERATIONS

EXAMINED MAY 16 20 14

 ENGINEER OF PROJECT IMPLEMENTATION

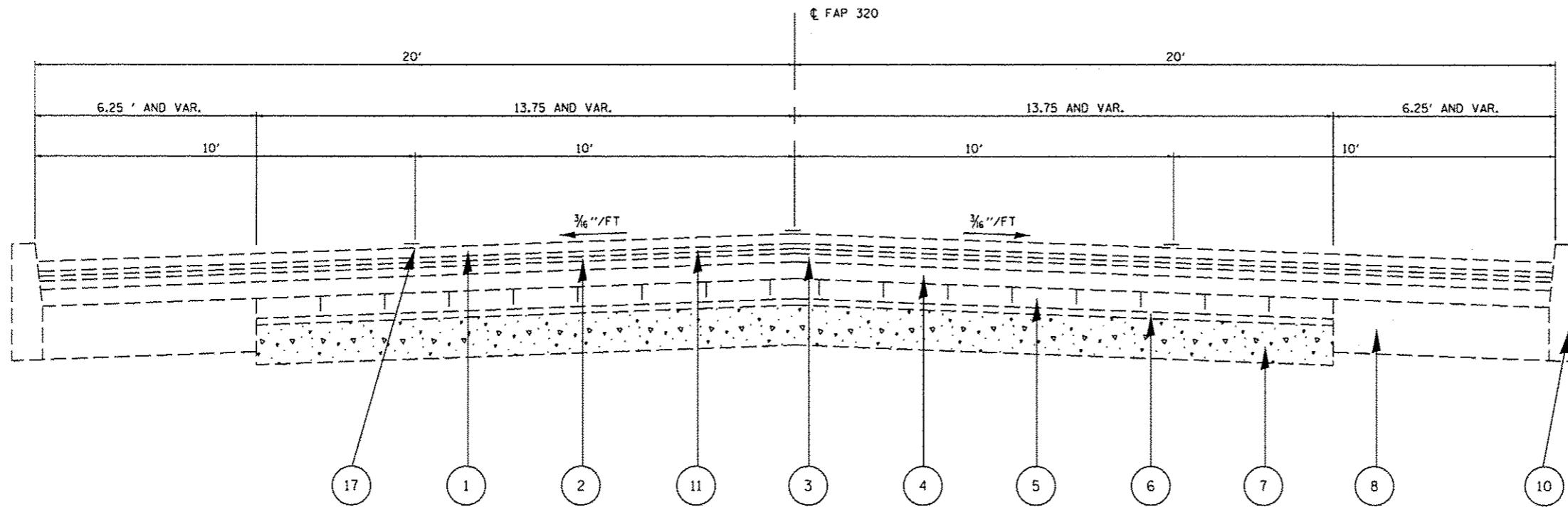
EXAMINED May 15 20 14

 ENGINEER OF PROGRAM DEVELOPMENT

FILE NAME *	USER NAME * shahda	DESIGNED - OMS	REVISED -	STATE OF ILLINOIS DEPARTMENT OF TRANSPORTATION	INDEX OF SHEETS, STANDARDS, SIGNATURES, GENERAL NOTES	F.A.P. RTE.	SECTION	COUNTY	TOTAL SHEETS	SHEET NO.	
S:\CONTRMAINT\CARV2\2122 - IL 18 - Lincoln	Patching\plansheets.dgn	DRAWN - OMS	REVISED -			320	*	LOGAN	15	2	
Default	PLOT SCALE = 40,0000 / in.	CHECKED -	REVISED -			CONTRACT NO. 72H22					
Default	PLOT DATE = May-27-2014 01:19:35PM	DATE -	REVISED -			ILLINOIS FED. AID PROJECT					

URBAN

CODE NO.	ITEM	UNIT	TOTAL QUANTITY	CONSTR. CODE
				100% STATE ROADWAY 0005 S.N.
31101000	SUBBASE GRANULAR MATERIAL, TYPE B	TON	512	512
60261500	INLETS TO BE ADJUSTED WITH NEW TYPE 15 FRAME AND LID	EACH	3	3
67100100	MOBILIZATION	L SUM	1	1
70102625	TRAFFIC CONTROL AND PROTECTION, STANDARD 701606	L SUM	1	1
70102635	TRAFFIC CONTROL AND PROTECTION, STANDARD 701701	L SUM	1	1
* 78000300	THERMOPLASTIC PAVEMENT MARKING - LINE 5"	FOOT	800	800
44200144	PAVEMENT PATCHING, TYPE II, 12 INCH	50 YD	287	287
44200148	PAVEMENT PATCHING, TYPE III, 12 INCH	50 YD	67	67
44200150	PAVEMENT PATCHING, TYPE IV, 12 INCH	50 YD	1904	1904

* SPECIALTY ITEM



LEGEND - TYPICAL #1

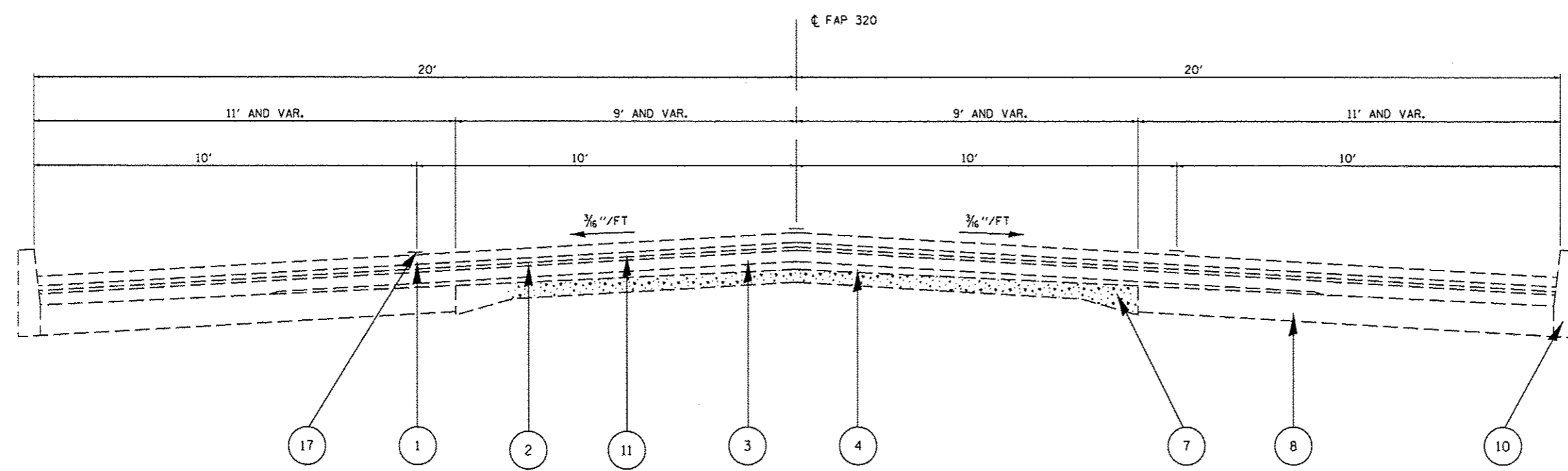
- ① EXIST BITUMINOUS SURFACE COURSE, 1 1/2"
- ② EXIST LEVELING BINDER, 1/2"
- ③ EXIST BITUMINOUS SURFACE COURSE 1 1/4"
- ④ EXIST BITUMINOUS BINDER COURSE 2 1/4"
- ⑤ EXIST BRICK COURSE, 3"
- ⑥ EXIST SAND CUSHION, 1"
- ⑦ EXIST PCC PAVEMENT, 6"
- ⑧ EXIST PCC BASE COURSE WIDENING, 8"
- ⑩ EXIST CONCRETE CURB, TY 4, MODIFIED
- ⑪ EXIST BITUMINOUS BINDER COURSE, 3/4"
- ⑰ EXIST THERMOPLASTIC PAVEMENT MARKING

TYPICAL #1

STA. 177+45.65 TO STA. 178+70.11
 STA. 1+44.38 TO STA. 12+79.00
 STA. 22+84.00 TO STA. 37.89.45

STATION EQUATION

STA. 178+70.11 BK =
 STA. 1+44.38 AH



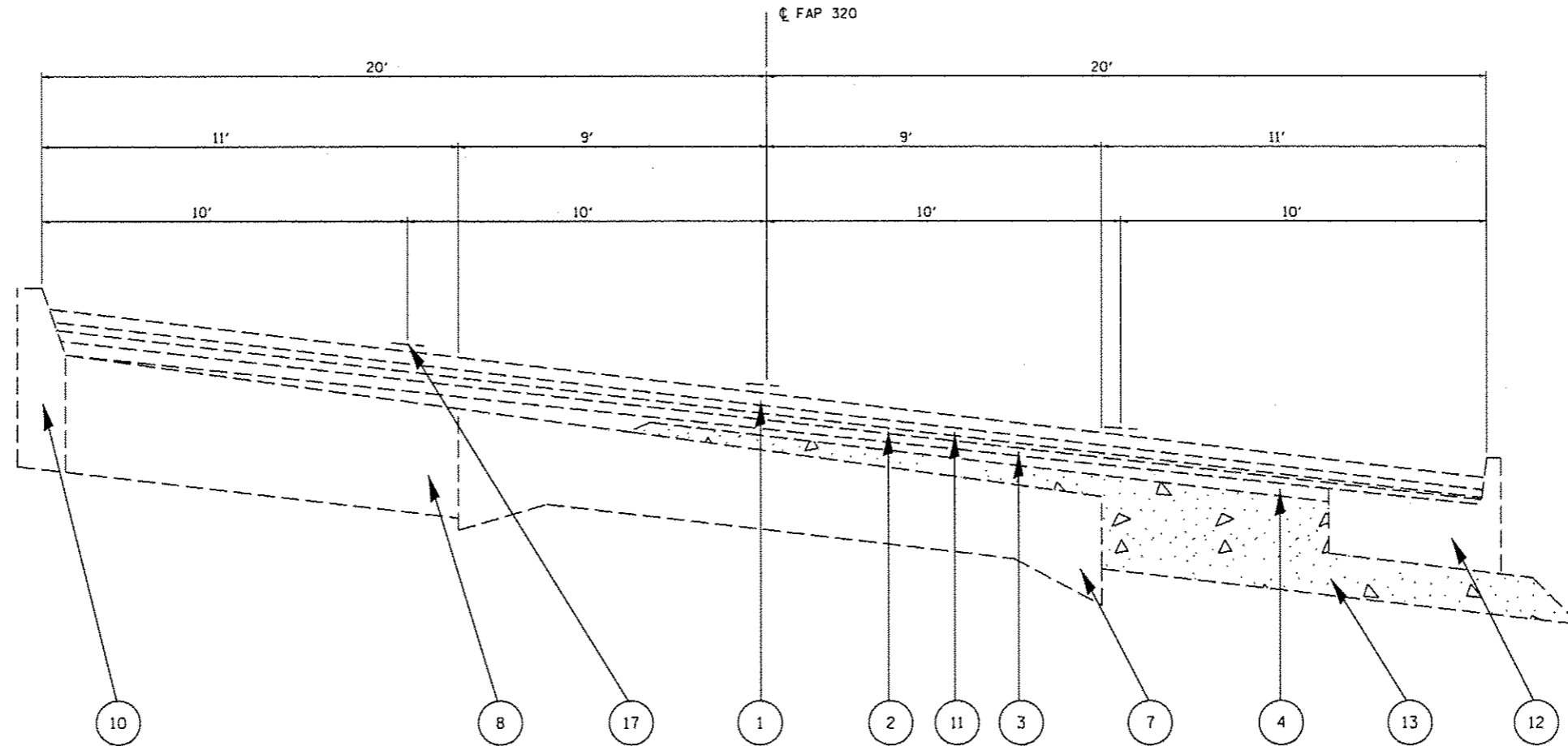
LEGEND - TYPICAL #2

- ① EXIST BITUMINOUS SURFACE COURSE, 1 1/2"
- ② EXIST LEVELING BINDER, 1/2"
- ③ EXIST BITUMINOUS SURFACE COURSE 1 1/4"
- ④ EXIST BITUMINOUS BINDER COURSE 1 3/4"
- ⑦ EXIST PCC PAVEMENT (9-6-9)
- ⑧ EXIST PCC BASE COURSE WIDENING, 8"
- ⑩ EXIST CONCRETE CURB, TY 4, MODIFIED
- ⑪ EXIST BITUMINOUS BINDER COURSE, 3/4"
- ⑰ EXIST THERMOPLASTIC PAVEMENT MARKING

TYPICAL #2

STA. 12.79+00 TO STA. 14+50.00
 STA. 22+00.00 TO STA. 22+84.00

FILE NAME * S:\CONTRACTMAINT\CAD\72H22 - IL 18 - Lincoln Patching\plansheets.dgn	USER NAME * shehds	DESIGNED - DMS	REVISED -	STATE OF ILLINOIS DEPARTMENT OF TRANSPORTATION	TYPICAL SECTION FAP 320		F.A.P. RTE. 320	SECTION *	COUNTY LOGAN	TOTAL SHEETS 15	SHEET NO. 4	
PLOT SCALE * 48,80000 1/ in.	CHECKED -	DRAWN - DMS	REVISED -		SCALE:	SHEET 1	OF 4 SHEETS	STA.	TO STA.	CONTRACT NO. 72H22		
PLOT DATE * May-19-2014 11:42:45AM	DATE -		REVISED -		ILLINOIS FED. AID PROJECT							
					* DG SPRING RD REPAIR 2014-24							



TYPICAL #3

STA. 14+50.00 TO STA. 20+85.17
 STA. 20+85.17 TO STA. 22+00.00

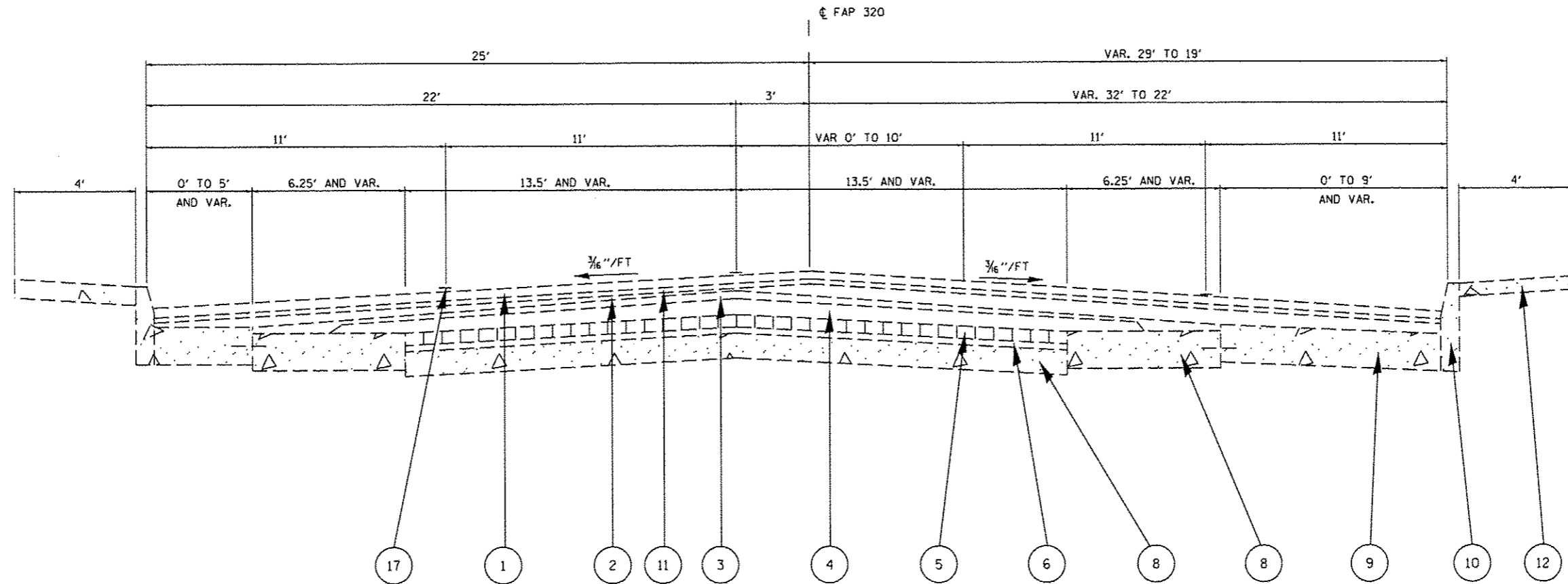
STATION EQUATION

STA. 20+85.17 BK =
 STA. 21+04.04 AH

LEGEND - TYPICAL #3

- ① EXIST BITUMINOUS SURFACE COURSE, 1 1/2"
- ② EXIST LEVELING BINDER, 1/2"
- ③ EXIST BITUMINOUS SURFACE COURSE 1 1/4"
- ④ EXIST BITUMINOUS BINDER COURSE 1 3/4"
- ⑦ EXIST PCC PAVEMENT (9-6-9)
- ⑧ EXIST PCC BASE COURSE WIDENING, 8"
- ⑩ EXIST CONCRETE CURB, TY 4, MODIFIED
- ⑪ EXIST BITUMINOUS BINDER COURSE, 3/4"
- ⑫ EXIST COMBINATION CONC CURB AND GUTTER ,TY 3
- ⑬ EXIST GRANULAR EMBANKMENT
- ⑰ EXIST THERMOPLASTIC PAVEMENT MARKING

FILE NAME *	USER NAME * shahdm	DESIGNED - DMS	REVISED -	STATE OF ILLINOIS DEPARTMENT OF TRANSPORTATION	TYPICAL SECTION FAP 320			F.A.P. RTE. 320	SECTION •	COUNTY LOGAN	TOTAL SHEETS 15	SHEET NO. 5
S:\CONTRMAINT_CADD\72H22 - IL 18 - Lincoln	Patching\plansheets.dgn	DRAWN - DMS	REVISED -		SCALE:	SHEET 2	OF 4 SHEETS	STA.	TO STA.	CONTRACT NO. 72H22		
	PLOT SCALE * 48.0000' / 1"	CHECKED -	REVISED -		ILLINOIS FED. AID PROJECT							
Default	PLOT DATE * May-19-2014 11:42:58AM	DATE -	REVISED -		* D6 SPRING RD REPAIR 2014-24							



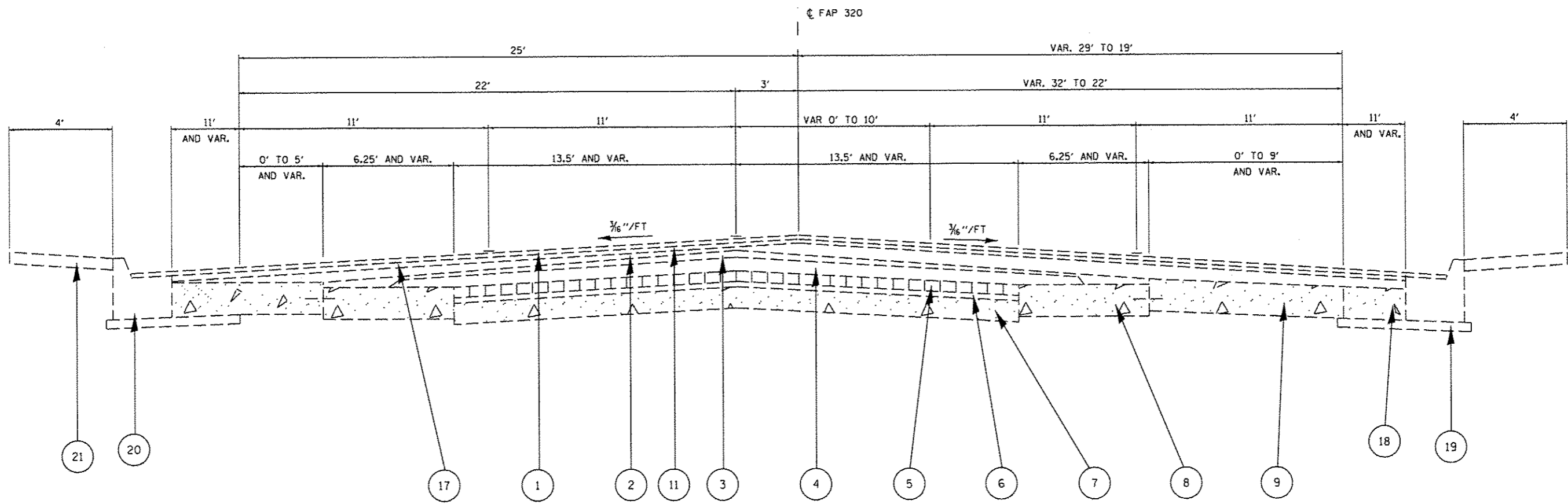
TYPICAL #4

LT. STA. 37+89.45 TO 41+15.25
 RT. STA. 37.89.45 TO 41+45.23

LEGEND - TYPICAL #4

- ① EXIST BITUMINOUS SURFACE COURSE, 1 1/2"
- ② EXIST LEVELING BINDER, 1 1/2"
- ③ EXIST BITUMINOUS SURFACE COURSE 1 1/4"
- ④ EXIST BITUMINOUS BINDER COURSE 2 1/2"
- ⑤ EXIST BRICK COURSE, 3"
- ⑥ EXIST SAND CUSHION, 1"
- ⑦ EXIST PCC PAVEMENT, 6"
- ⑧ EXIST PCC BASE COURSE WIDENING, 8"
- ⑨ EXIST PCC BASE COURSE WIDENING, 9"
- ⑩ EXIST CONCRETE CURB, TY B
- ⑪ EXIST BITUMINOUS BINDER COURSE, 3/4"
- ⑫ EXIST PCC SIDEWALK, 4"
- ⑬ EXIST THERMOPLASTIC PAVEMENT MARKING

FILE NAME * S:\CONTRACTS\72H22 - IL 18 - Lincol	USER NAME * shahdm Patching\plan sheets.dgn	DESIGNED - DMS	REVISIONS -	STATE OF ILLINOIS DEPARTMENT OF TRANSPORTATION	TYPICAL SECTION FAP 320			F.A.P. RTE. 320	SECTION *	COUNTY LOGAN	TOTAL SHEETS 15	SHEET NO. 6
	PLOT SCALE * 48.0000' / in.	DRAWN - DMS	REVISIONS -		SCALE:	SHEET 3	OF 4 SHEETS	STA.	TO STA.	CONTRACT NO. 72H22		
Default	PLOT DATE * May-19-2014 11:42:56AM	CHECKED -	REVISIONS -		ILLINOIS FED. AID PROJECT							
		DATE -	REVISIONS -		* DE SPRING RD REPAIR 2014-24							



TYPICAL #5

LT. STA. 41+15.25 TO 42+19.00
 RT. STA. 41+45.23 TO 42+19.00

LEGEND - TYPICAL #5

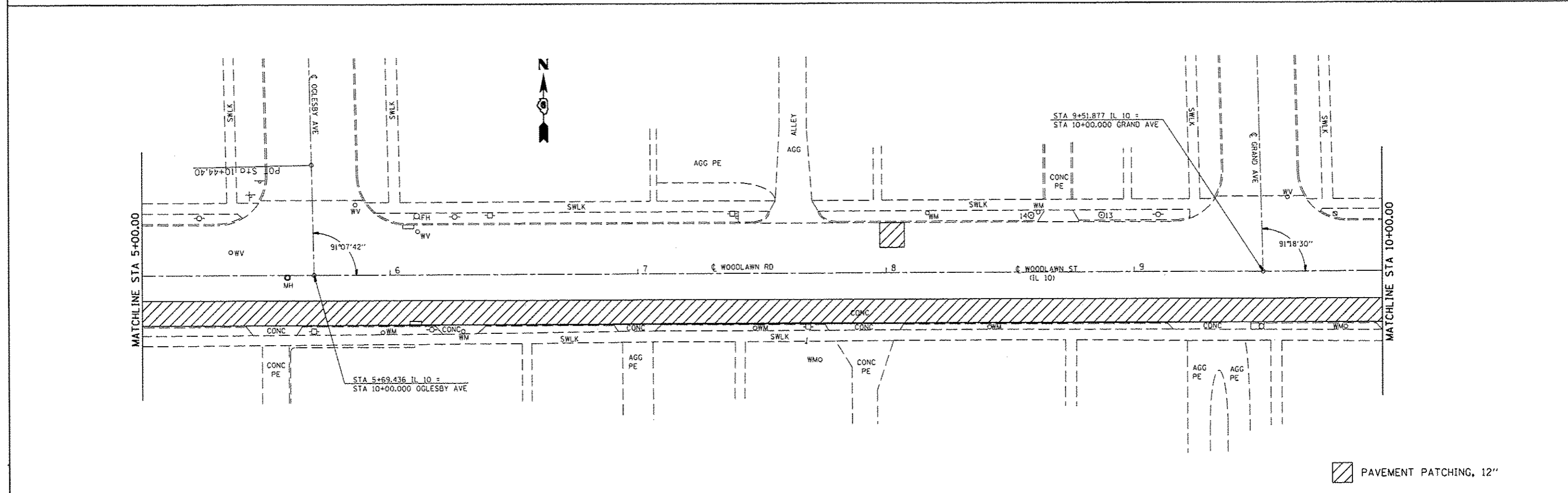
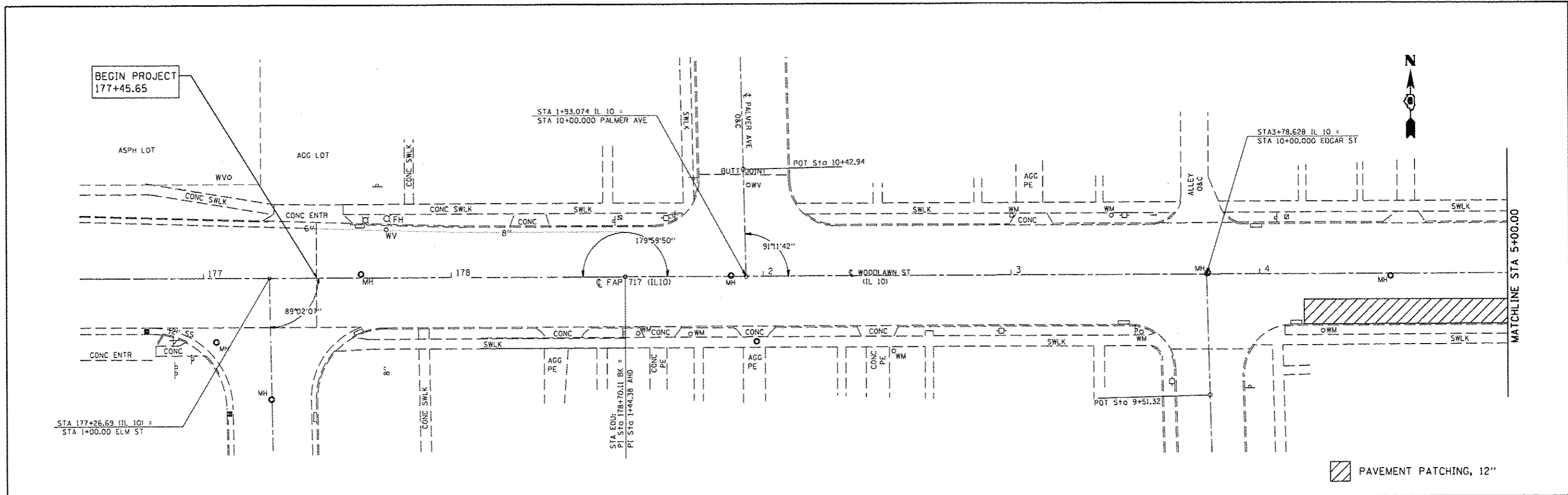
- ① EXIST BITUMINOUS SURFACE COURSE, 1 1/2"
- ② EXIST LEVELING BINDER, 1 1/2"
- ③ EXIST BITUMINOUS SURFACE COURSE 1 1/4"
- ④ EXIST BITUMINOUS BINDER COURSE 2 1/2"
- ⑤ EXIST BRICK COURSE, 3"
- ⑥ EXIST SAND CUSHION, 1"
- ⑦ EXIST PCC PAVEMENT, 6"
- ⑧ EXIST PCC BASE COURSE WIDENING, 8"
- ⑨ EXIST PCC BASE COURSE WIDENING, 9"
- ⑩ EXIST BITUMINOUS BINDER COURSE, 3/4"
- ⑪ EXIST PCC SIDEWALK, 4"
- ⑫ EXIST THERMOPLASTIC PAVEMENT MARKING
- ⑬ EXIST PCC BASE COURSE, 9"
- ⑭ EXIST AGGREGATE SUB-BASE, 4"
- ⑮ EXIST B-6.24 CURB AND GUTTER
- ⑯ EXIST SIDEWALK, 4"

FILE NAME *	USER NAME * shahdn	DESIGNED - DMS	REVISED -	STATE OF ILLINOIS DEPARTMENT OF TRANSPORTATION	TYPICAL SECTION FAP 320			F.A.P. RTE. 320	SECTION .	COUNTY LOGAN	TOTAL SHEETS 15	SHEET NO. 7
S:\CONTRMAINT\CAD\72H22 - IL 18 - Lincol	Patching\plonahaeta.dgn	DRAWN - DMS	REVISED -		SCALE:	SHEET 4	OF 4	SHEETS	STA.	TO STA.	CONTRACT NO. 72H22	
Default	PLOT SCALE = 40.0000 1/16"	CHECKED -	REVISED -		ILLINOIS FED. AID PROJECT							
	PLOT DATE = May-19-2014 11:43:02AM	DATE -	REVISED -		* D6 SPRING RD REPAIR 2014-24							

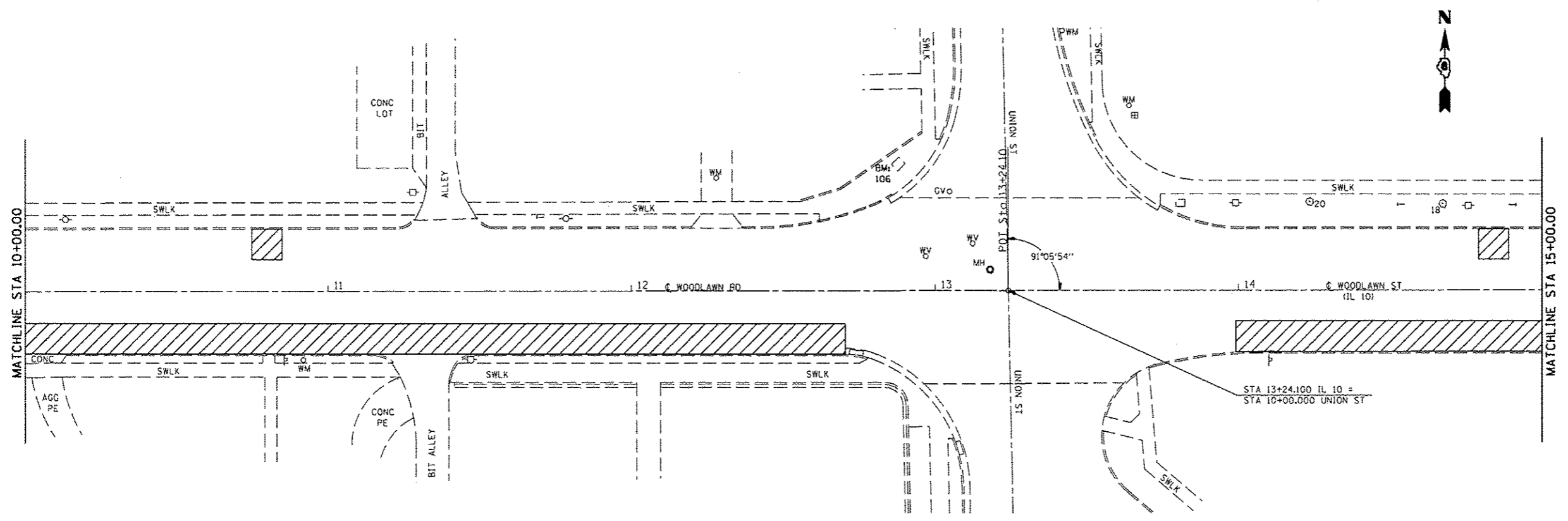
LOCATION STA. TO STA. (RT/LT) (DL/PL)	LENGTH FT	WIDTH FT	AREA SQ YD	31101000 SUBBASE GRAN MATL. TY B. d=4"	TON	PAV'T PATCHING, TY II, 12 IN (SPECIAL) SQ YD	PAV'T PATCHING, TY III, 12 IN (SPECIAL) SQ YD	PAV'T PATCHING, TY IV, 12 IN (SPECIAL) SQ YD
STA. 04+18.00 TO STA. 12+70.00 R DL	852.0	10	946.7	215.6	-	-	946.7	
STA. 07+97.00 TO STA. 08+07.00 LT DL	10.0	10	11.1	2.5	11.1	-	-	
STA. 10+75.00 TO STA. 10+85.00 LT DL	10.0	10	11.1	2.5	11.1	-	-	
STA. 14+00.00 TO STA. 20+85.17 BK RT DL	685.2	10	761.3	173.4	-	-	761.3	
STA. 21+04.04 AH TO STA. 22+80.00 RT DL	176.0	10	195.5	44.5	-	-	195.5	
STA. 14+79.00 TO STA. 14+89.00 LT DL	10.0	10	11.1	2.5	11.1	-	-	
STA. 21+54.00 TO STA. 21+64.00 LT DL, PL	10.0	20	22.2	5.1	-	22.2	-	
STA. 23+20.00 TO STA. 23+30.00 LT DL	10.0	10	11.1	2.5	11.1	-	-	
STA. 23+78.00 TO STA. 23+88.00 RT DL	10.0	10	11.1	2.5	11.1	-	-	
STA. 24+29.00 TO STA. 24+39.00 RT DL	10.0	10	11.1	2.5	11.1	-	-	
STA. 24+93.00 TO STA. 25+03.00 RT DL	10.0	10	11.1	2.5	11.1	-	-	
STA. 26+12.00 TO STA. 26+22.00 RT DL	10.0	10	11.1	2.5	11.1	-	-	
STA. 27+20.00 TO STA. 27+30.00 LT DL	10.0	10	11.1	2.5	11.1	-	-	
STA. 28+17.00 TO STA. 28+27.00 RT DL	10.0	10	11.1	2.5	11.1	-	-	
STA. 29+04.00 TO STA. 29+14.00 RT DL	10.0	10	11.1	2.5	11.1	-	-	
STA. 29+26.00 TO STA. 29+36.00 LT DL	10.0	10	11.1	2.5	11.1	-	-	
STA. 29+28.00 TO STA. 29+38.00 RT DL	10.0	10	11.1	2.5	11.1	-	-	
STA. 31+32.00 TO STA. 31+42.00 LT DL	10.0	10	11.1	2.5	11.1	-	-	
STA. 31+65.00 TO STA. 31+75.00 RT DL	10.0	10	11.1	2.5	11.1	-	-	
STA. 32+64.00 TO STA. 32+74.00 RT DL	10.0	10	11.1	2.5	11.1	-	-	
STA. 33+21.00 TO STA. 33+31.00 LT DL	10.0	10	11.1	2.5	11.1	-	-	
STA. 33+53.00 TO STA. 33+63.00 RT DL, PL	10.0	20	22.2	5.1	-	22.2	-	
STA. 35+28.00 TO STA. 35+38.00 RT DL	10.0	10	11.1	2.5	11.1	-	-	
STA. 36+46.00 TO STA. 36+56.00 RT DL	10.0	10	11.1	2.5	11.1	-	-	
STA. 36+73.00 TO STA. 36+83.00 LT DL	10.0	10	11.1	2.5	11.1	-	-	
STA. 37+38.00 TO STA. 37+48.00 RT DL	10.0	10	11.1	2.5	11.1	-	-	
STA. 38+15.00 TO STA. 38+25.00 LT DL, PL	10.0	20	22.2	5.1	-	22.2	-	
STA. 39+08.00 TO STA. 39+18.00 LT DL	10.0	10	11.1	2.5	11.1	-	-	
STA. 39+35.00 TO STA. 39+45.00 RT DL	10.0	10	11.1	2.5	11.1	-	-	
STA. 39+84.00 TO STA. 39+94.00 LT DL	10.0	10	11.1	2.5	11.1	-	-	
STA. 41+00.00 TO STA. 41+10.00 RT DL	10.0	10	11.1	2.5	11.1	-	-	
TOTAL:				512.0	277.8	66.7	1903.5	
USE:				512	278	67	1904	

60261500	
INLETS TO BE ADJUSTED WITH NEW TYPE 15 FRAME AND LID, (EACH)	
LOCATION	QUANTITY
STA. 17+45 RT	1
STA. 19+32 RT	1
STA. 21+76 RT	1
TOTAL:	3
USE:	3

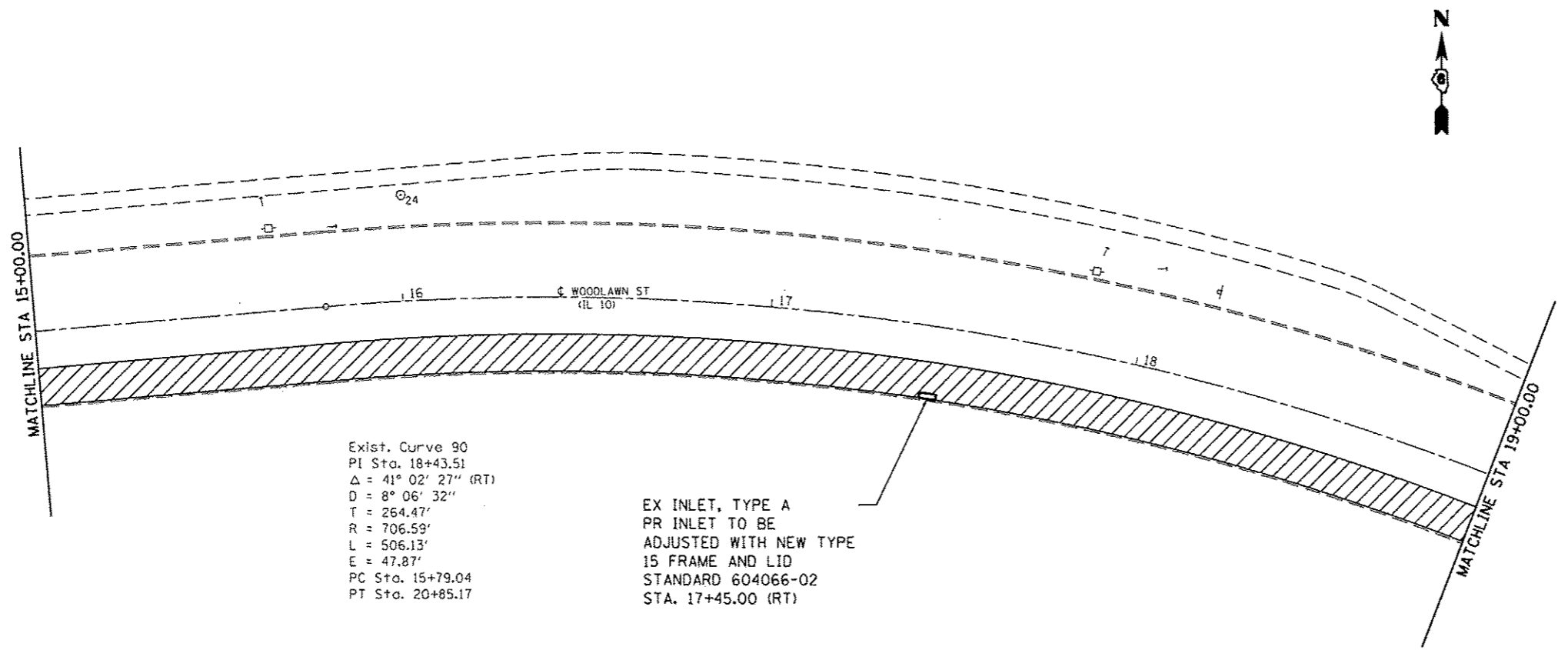
FILE NAME * S:\CONTRMAINT\CAD\72H22 - IL 18 - Lines	USER NAME * shondm Patching\plansheets.dgn	DESIGNED - DMS	REVISED -	STATE OF ILLINOIS DEPARTMENT OF TRANSPORTATION	SCHEDULE OF QUANTITY				F.A.P. RTE.	SECTION	COUNTY	TOTAL SHEETS	SHEET NO.
Default	PLOT SCALE * 48.0000' / 1"	DRAWN - DMS	REVISED -						320	*	LOGAN	15	8
	PLOT DATE * May-19-2014 11:43:09AM	CHECKED -	REVISED -		CONTRACT NO. 72H22				ILLINOIS FED. AID PROJECT				
		DATE -	REVISED -		SCALE:	SHEET	OF	SHEETS	STA.	TO	STA.		



FILE NAME :	USER NAME :	DESIGNED -	REVISED -	STATE OF ILLINOIS DEPARTMENT OF TRANSPORTATION	PLAN SHEET FAP 320			F.A.P RTE.	SECTION	COUNTY	TOTAL SHEETS	SHEET NO.
S:\CONTRMAINT\CA00\72H22 - IL 10 - Lincoln	shehdm	DMS	-		320	*	LOGAN	15	9			
	Posching\plansheets.dgn	DRAWN -	REVISED -		SCALE: SHEET 1 OF 5 SHEETS STA. TO STA.			CONTRACT NO. 72H22				
		DMS	-		ILLINOIS FED. AID PROJECT							
	PLOT SCALE = 48.0000' / 1" =	CHECKED -	REVISED -									
	PLOT DATE = May-19-2014 11:43:15AM	DATE -	REVISED -									

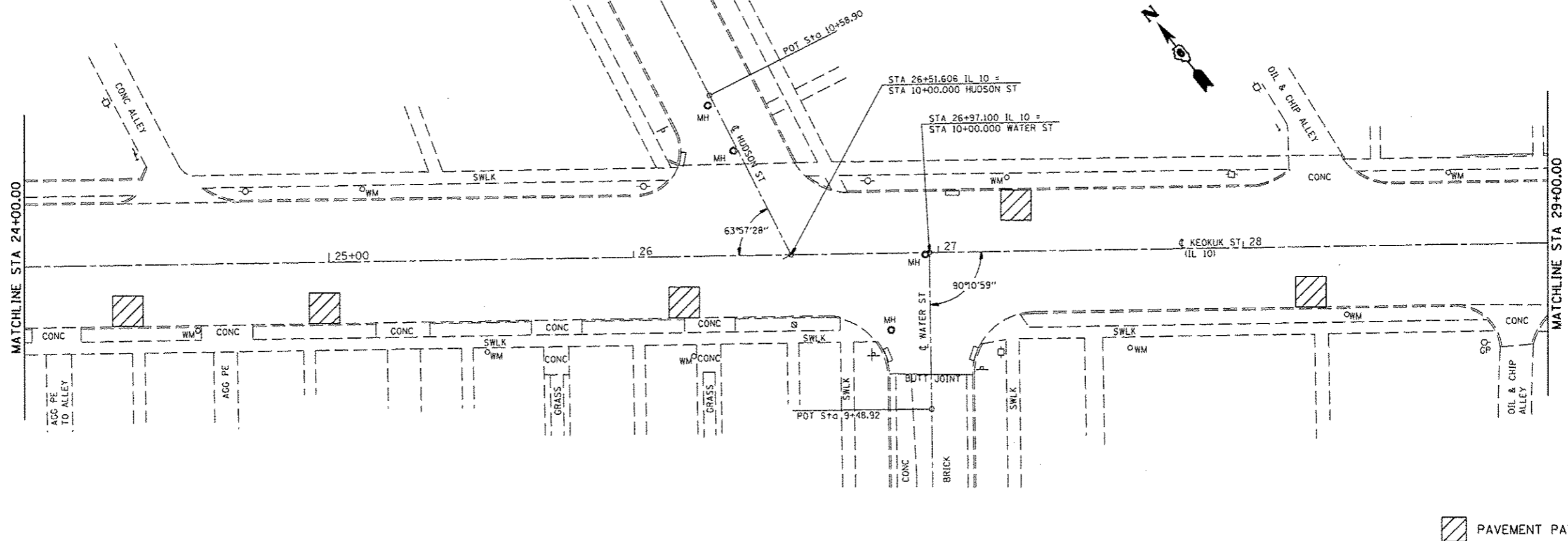
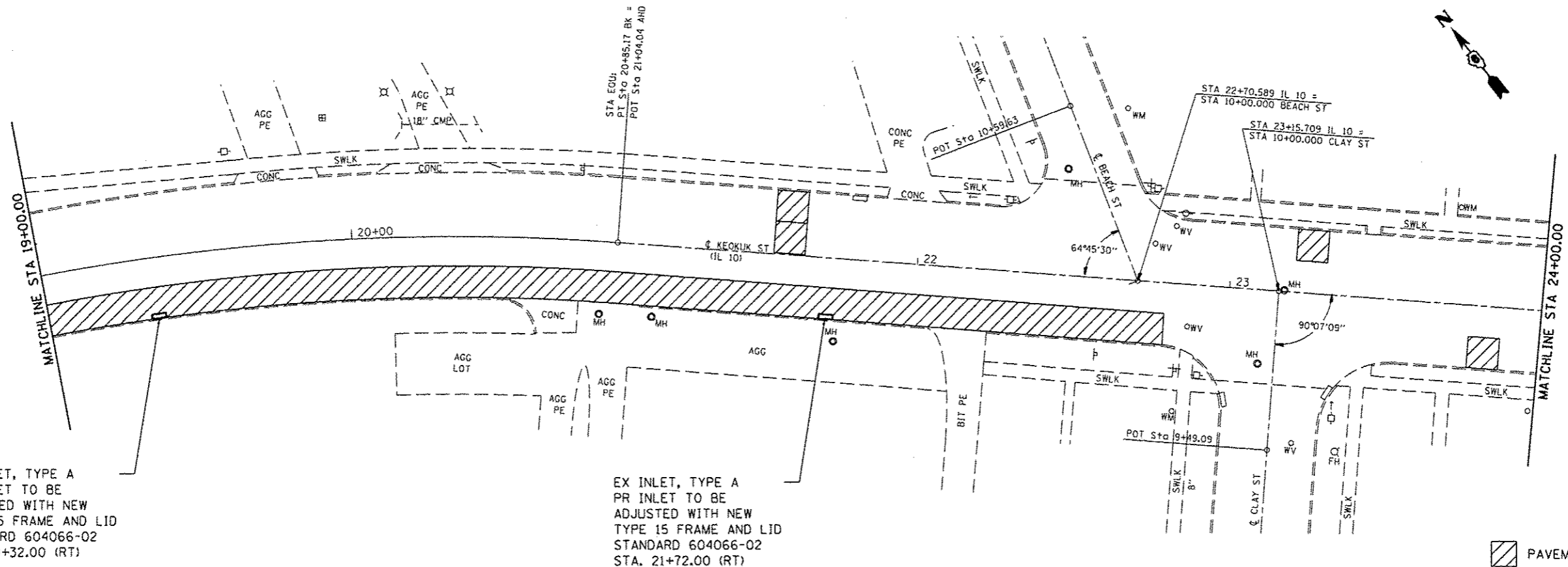


PAVEMENT PATCHING, 12"

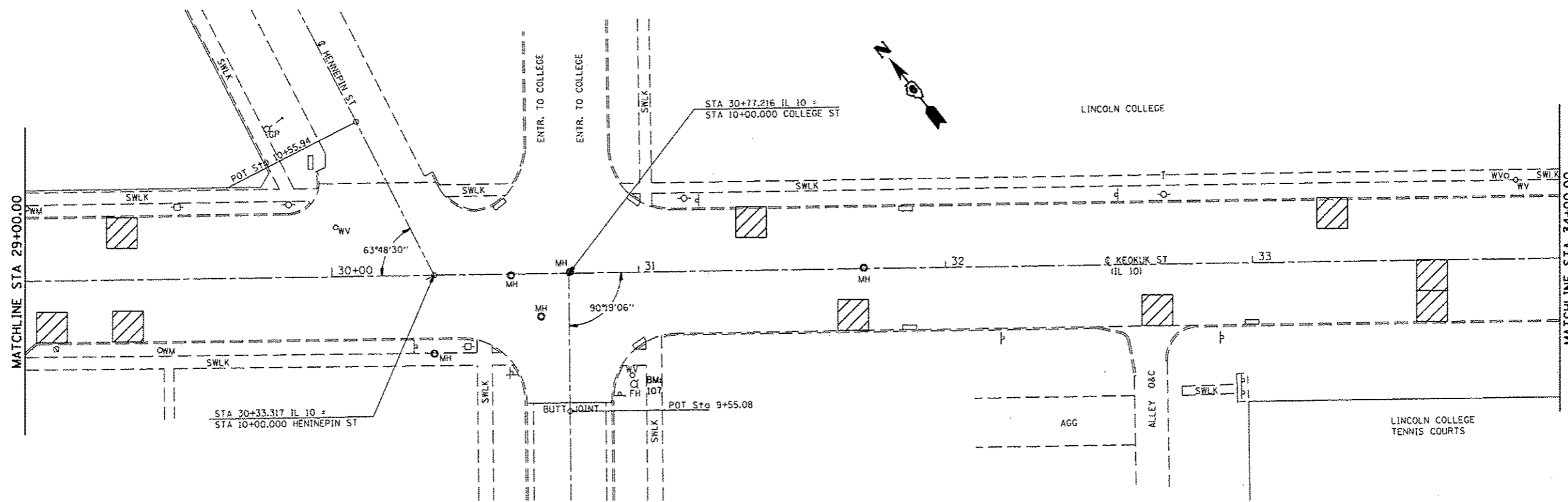


PAVEMENT PATCHING, 12"

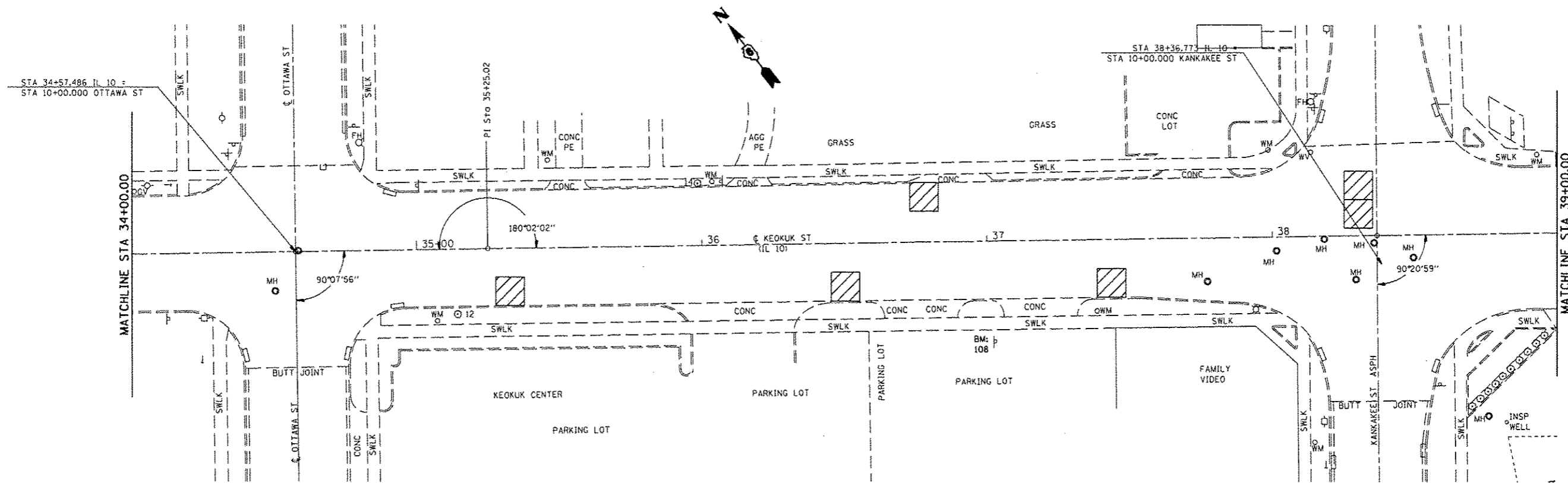
FILE NAME * S:\CONTRMAINT\CAD\72H22 - IL 18 - Lincoln Patching\plansheets.dgn	USER NAME * shahid	DESIGNED - DMS	REVISED -	STATE OF ILLINOIS DEPARTMENT OF TRANSPORTATION	PLAN SHEET FAP 320			F.A.P. RTE. 320	SECTION *	COUNTY LOGAN	TOTAL SHEETS 15	SHEET NO. 10
PLOT SCALE * 40,0000 / in.	CHECKED -	REVISIED -	REVISIED -		SCALE:	SHEET 2	OF 5 SHEETS	STA.	TO STA.	CONTRACT NO. 72H22		
PLOT DATE * May-19-2014 11:43:25AM	DATE -	REVISIED -	REVISIED -		ILLINOIS FED. AID PROJECT							
Default					* D6 SPRING RD REPAIR 2014-24							



FILE NAME * S:\CONTRMINT_CADD\72H22 - IL 10 - Lincoln	USER NAME * ahhdm Patching\plansheets.dgn	DESIGNED - DMS	REVISED -	STATE OF ILLINOIS DEPARTMENT OF TRANSPORTATION	PLAN SHEET FAP 320		F.A.P. RTE. 320	SECTION -	COUNTY LOGAN	TOTAL SHEETS 15	SHEET NO. 11	
	PLOT SCALE * 40,0000 ' / in.	DRAWN - DMS	REVISED -		SCALE:	SHEET 3	OF 5 SHEETS	STA.	TO STA.	CONTRACT NO. 72H22		
	PLOT DATE * May-19-2014 11:43:37AM	CHECKED -	REVISED -		ILLINOIS FED. AID PROJECT							
		DATE -	REVISED -		* 06 SPRING RD REPAIR 2014-24							



PAVEMENT PATCHING, 12"



PAVEMENT PATCHING, 12"

FILE NAME : S:\CONTRMNT_CAD\72H22 - IL 10 - Lincol Patching\plansheets.dgn
 PLOT SCALE : 48.0000' / in.
 PLOT DATE : May-19-2014 11:43:46AM

USER NAME : shandm
 DESIGNED : DMS
 DRAWN : DMS
 CHECKED :
 DATE :

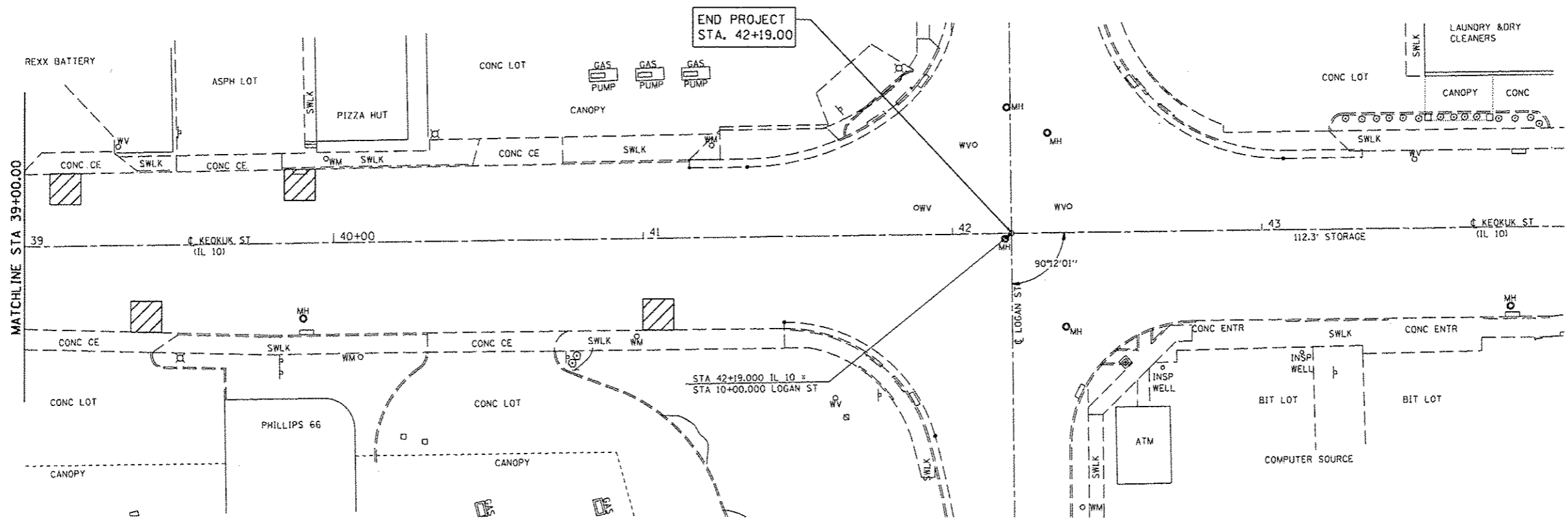
REVISED :
 REVISED :
 REVISED :
 REVISED :

STATE OF ILLINOIS
 DEPARTMENT OF TRANSPORTATION

PLAN SHEET
 FAP 320

SCALE: SHEET 4 OF 5 SHEETS STA. TO STA.

F.A.P. RTE.	SECTION	COUNTY	TOTAL SHEETS	SHEET NO.
320		LOGAN	12	12
CONTRACT NO. 72H22				
ILLINOIS FED. AID PROJECT				



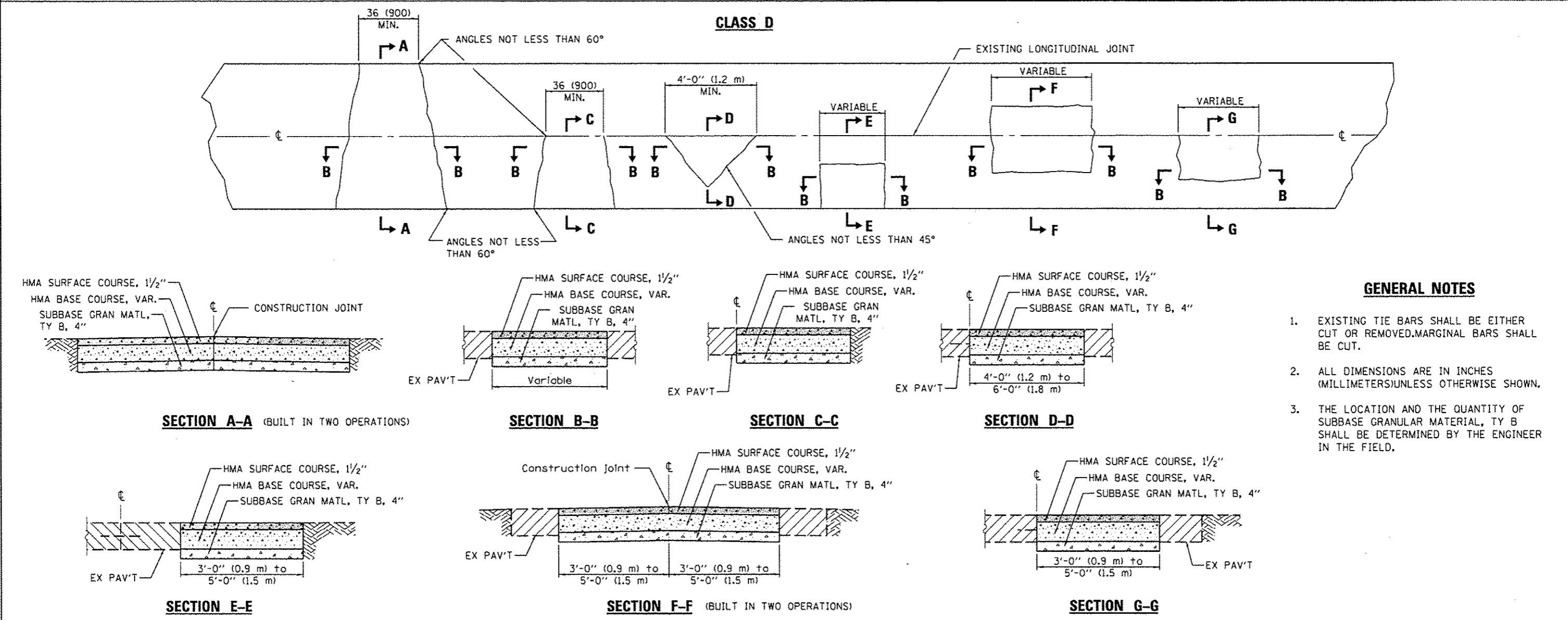
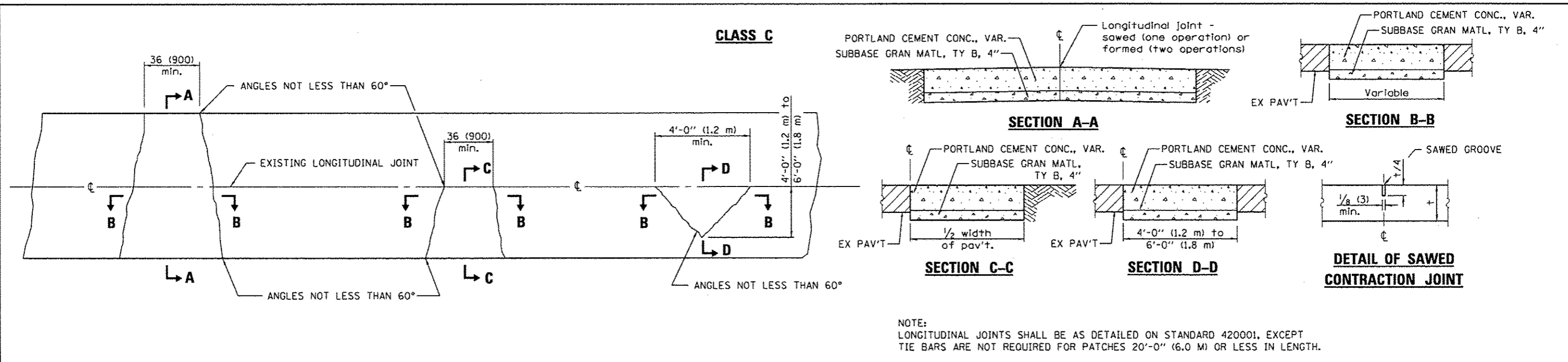
PAVEMENT PATCHING, 12"

FILE NAME *	USER NAME * shehdm	DESIGNED - DMS	REVISED -
S:\CONTRMAINT\CA01\72H22 - IL 10 - Lincoln Patching\plansheets.dgn		DRAWN - DMS	REVISED - 15
		CHECKED -	REVISED -
		DATE -	REVISED -
Default	PLOT DATE : May-19-2014 11:43:52AM		

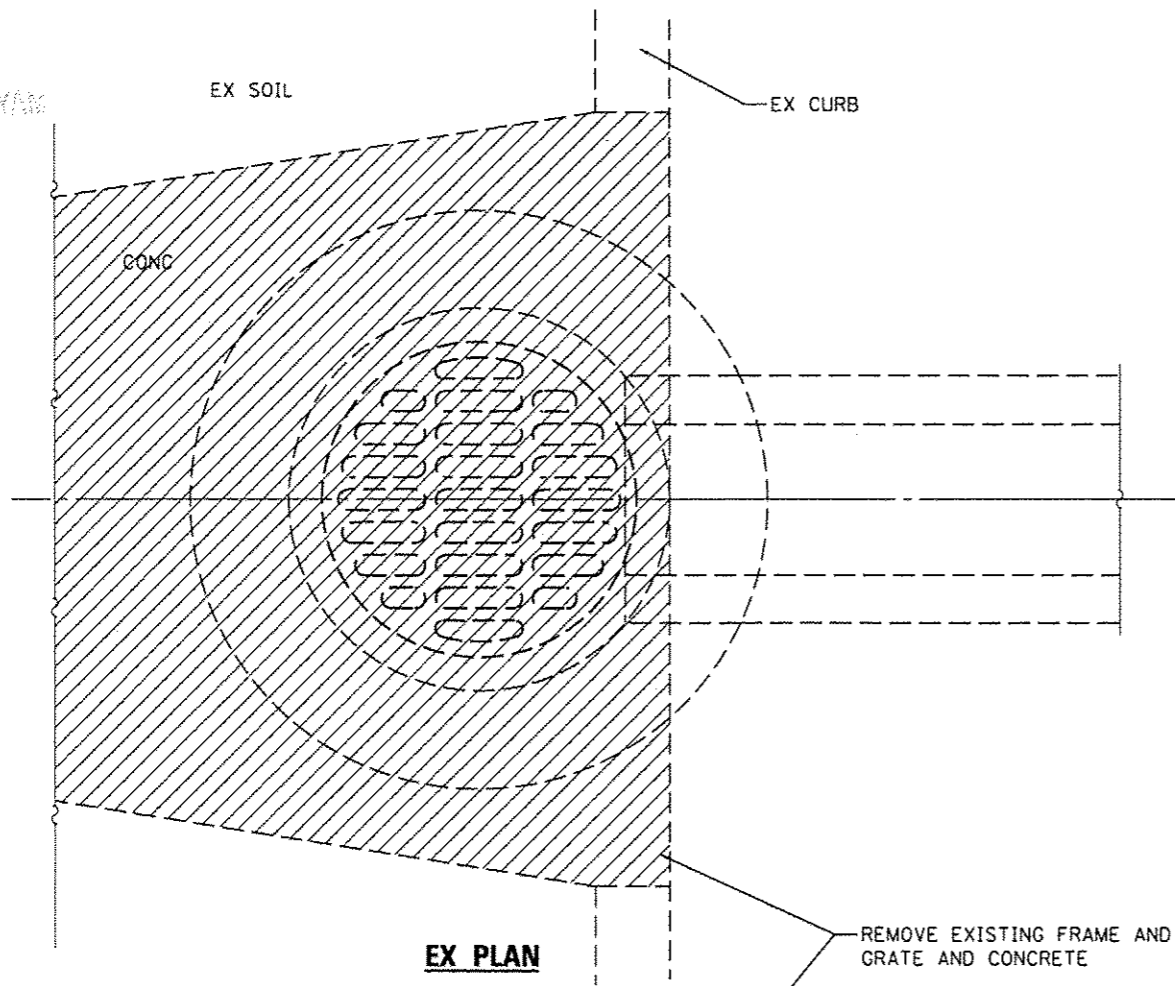
**STATE OF ILLINOIS
DEPARTMENT OF TRANSPORTATION**

PLAN SHEET FAP 320	
SCALE:	SHEET 5 OF 5 SHEETS
STA.	TO STA.

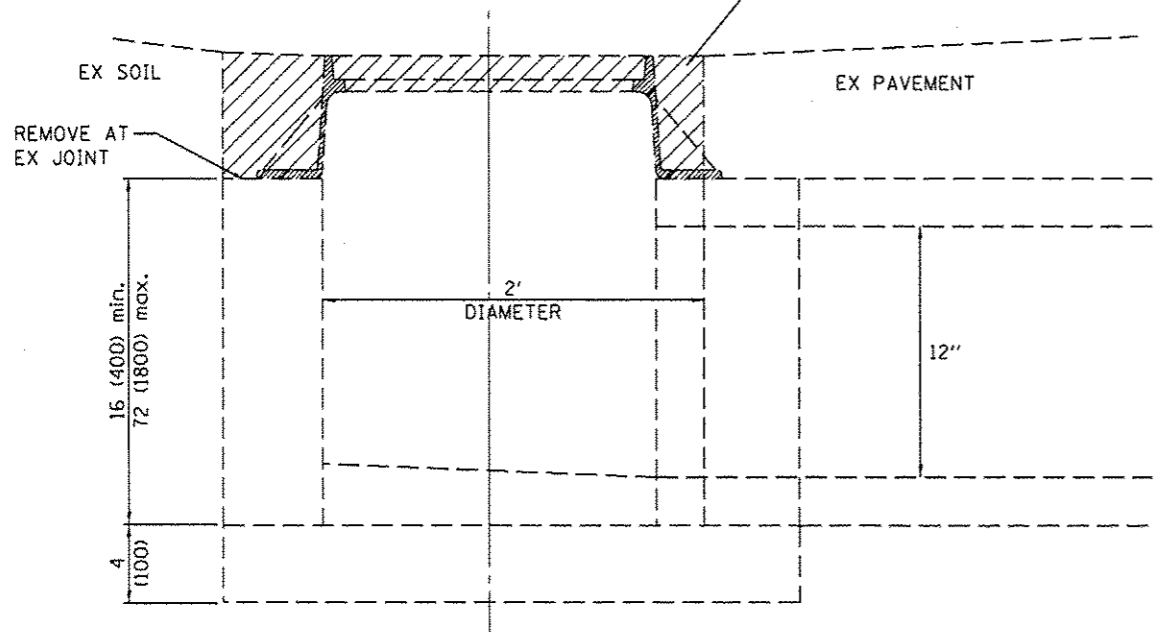
F.A.P. RTE.	SECTION	COUNTY	TOTAL SHEETS	SHEET NO.
320		LOGAN	15	13
CONTRACT NO. 72H22				
ILLINOIS FED. AID PROJECT				



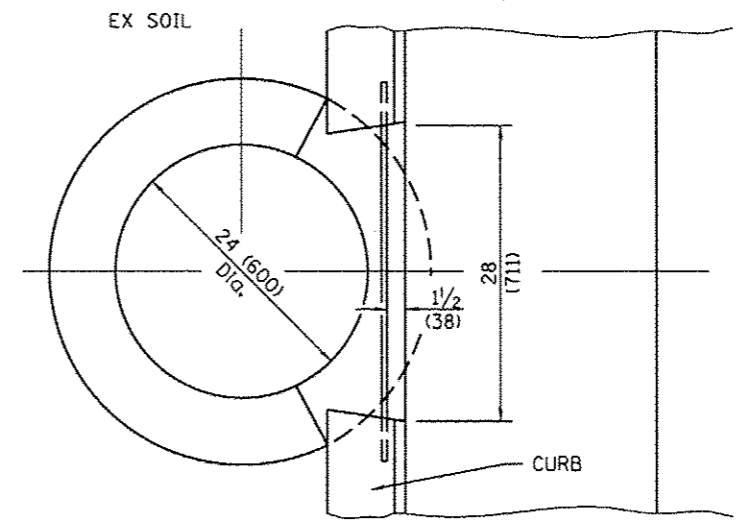
FILE NAME *	USER NAME * shahdm	DESIGNED - OMS	REVISED -	STATE OF ILLINOIS DEPARTMENT OF TRANSPORTATION	CLASS C AND D PATCH STANDARD 442201 MODIFIED			F.A.P. RTE. 320	SECTION -	COUNTY LOGAN	TOTAL SHEETS 15	SHEET NO. 14
SXCONTRMAINT_C40V72H22 - IL 18 - Lincoln	Patching\olmshahdm.dgn	DRAWN - OMS	REVISED -		SCALE: SHEET OF SHEETS STA. TO STA.			ILLINOIS FED. AID PROJECT				
	PLOT SCALE = 48.0000' / in.	CHECKED -	REVISED -					CONTRACT NO. 72H22				
Default	PLOT DATE = May-19-2014 11:44:01AM	DATE -	REVISED -					* 06 SPRING RD REPAIR 2014-24				



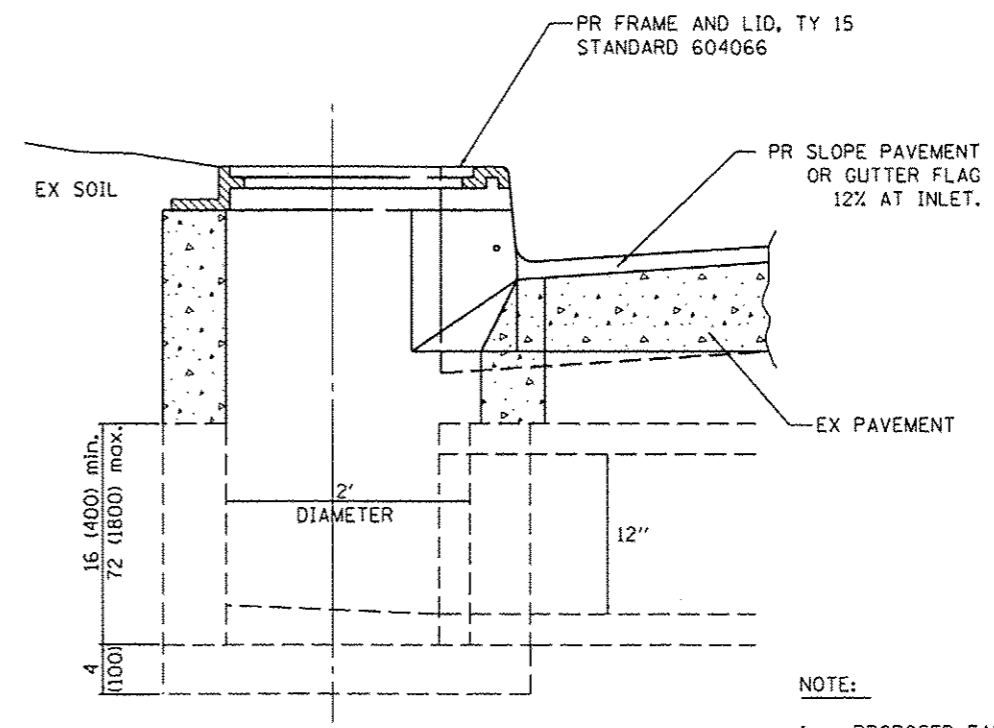
EX PLAN



EX ELEVATION



PR PLAN



PR ELEVATION

NOTE:

1. PROPOSED FRAME AND LID, TYPE 15 SHALL BE CONSTRUCTED ACCORDING TO STANDARD 604066.
2. ALL DIMENSIONS ARE IN INCHES (mm) UNLESS OTHERWISE SHOWN.
3. THE COST OF REMOVAL, LABOR, AND MATERIAL SHALL BE INCLUDED IN THE PAY ITEM "INLETS TO BE ADJUSTED WITH NEW TYPE 15 FRAME AND LID."

FILE NAME *	USER NAME *	DESIGNED -	REVISED -
SAVED\TRM\MAINT_CAD\72H22 - IL 18 - Lincoln	shahdm	DWS	-
	Patching\shahdm	DRAWN -	REVISED -
		DWS	-
		CHECKED -	REVISED -
			-
		DATE -	REVISED -
			-

**STATE OF ILLINOIS
DEPARTMENT OF TRANSPORTATION**

INLET ADJUSTMENT DETAIL
STA. 17+45 (RT), STA 19+32 (RT), STA 21+72 (RT)

F.A.P. RTE.	SECTION	COUNTY	TOTAL SHEETS	SHEET NO.
320	*	LOGAN	15	15
CONTRACT NO. 72H22			ILLINOIS FED. AID PROJECT	