

STATE OF ILLINOIS
DEPARTMENT OF TRANSPORTATION
DIVISION OF HIGHWAYS

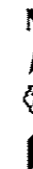
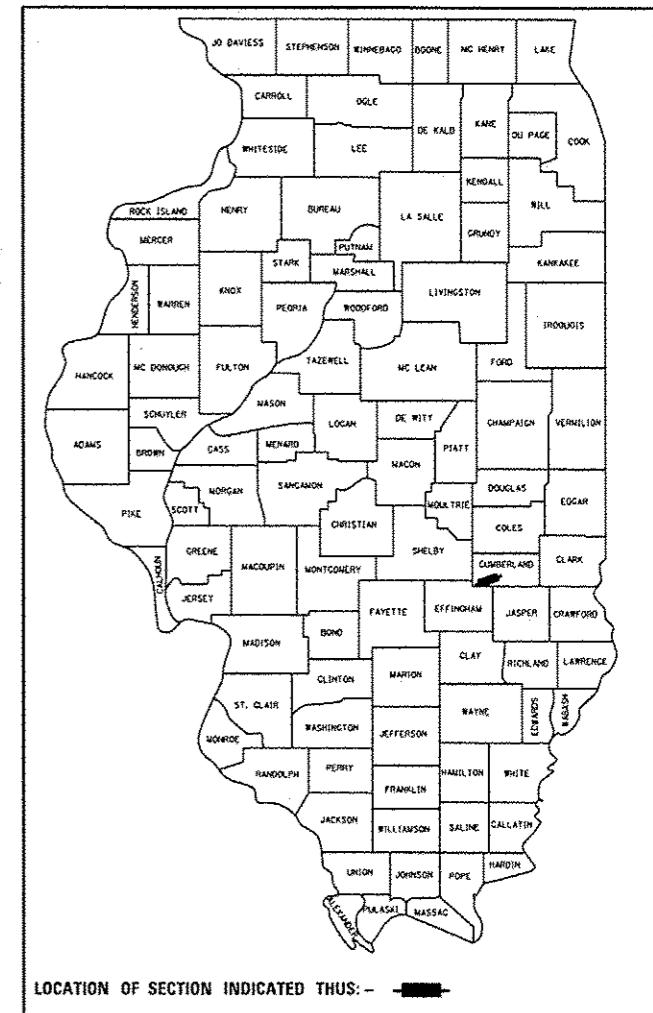
**PROPOSED
HIGHWAY PLANS**

F.A.I. ROUTE 70 (I-70)
SECTION (18-45)RS-4
PROJECT: ACNHPP-0070(402)
RESURFACING
CUMBERLAND COUNTY

C-97-078-09

F.A.I. RTE.	SECTION	COUNTY	TOTAL SHEETS	SHEET NO.
70	(18-45)RS-4	CUMBERLAND	17	1
		ILLINOIS	CONTRACT NO. 74386	

D-97-042-09



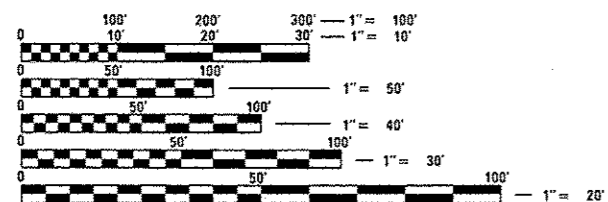
FOR INDEX OF SHEETS, SEE SHEET NO. 2

STATION EQUATION:
STA. 2772+59.71 (BK) = 9+02.89 (AH)

ADT=19,000 (2012)

F.A.I. ROUTE 70 (I-70)
SECTION (18-45)RS-4
ENDS STATION 108+45.00
CUMBERLAND COUNTY

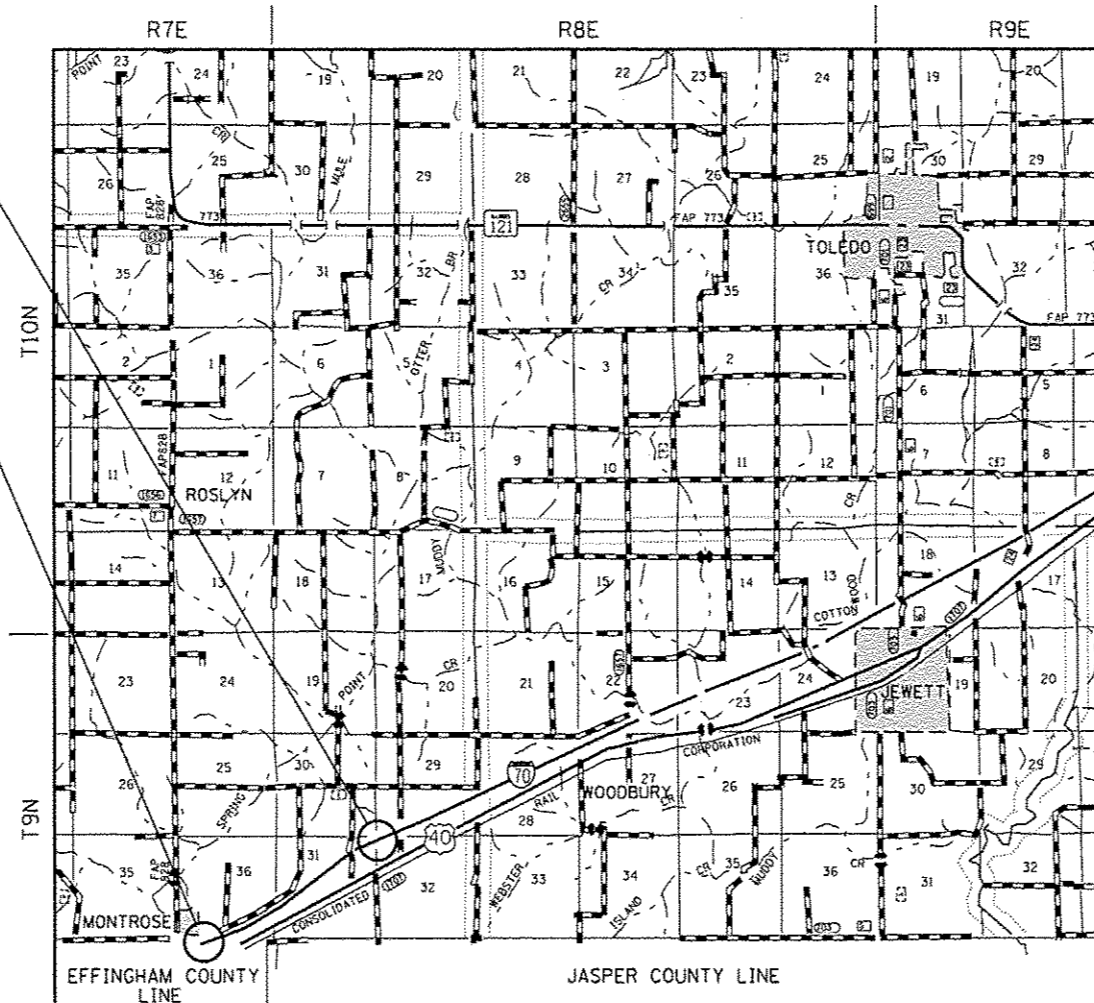
F.A.I. ROUTE 70 (I-70)
SECTION (18-45)RS-4
BEGINS STATION 2771+40.00
CUMBERLAND COUNTY



FULL SIZE PLANS HAVE BEEN PREPARED USING STANDARD ENGINEERING SCALES. REDUCED SIZED PLANS WILL NOT CONFORM TO STANDARD SCALES. IN MAKING MEASUREMENTS ON REDUCED PLANS, THE ABOVE SCALES MAY BE USED.

J.U.L.I.E.
JOINT UTILITY LOCATION INFORMATION FOR EXCAVATION
1-800-892-0123
OR 811

PROJECT ENGINEER: TOM ROMAN
PROJECT MANAGER: JENNIFER SHULL
PHONE: (217)-342-8361
CONTRACT NO. 74386



GROSS LENGTH = 10,061.82 FT. = 1.91 MILES
NET LENGTH = 10,061.82 FT. = 1.91 MILES

STATE OF ILLINOIS
DEPARTMENT OF TRANSPORTATION
DIVISION OF HIGHWAYS

SUBMITTED May 09 20 14
Tom L. Drishel
DEPUTY DIRECTOR OF HIGHWAYS, REGION ENGINEER

June 27 20 14
John D. Baranzoni P.E.
ENGINEER OF DESIGN AND ENVIRONMENT

June 27 20 14
Omer Osman P.E.
DIRECTOR OF HIGHWAYS, CHIEF ENGINEER

PRINTED BY THE AUTHORITY
OF THE STATE OF ILLINOIS