

STATE OF ILLINOIS
DEPARTMENT OF TRANSPORTATION
DIVISION OF HIGHWAYS

F.A. RTE.	SECTION	COUNTY	TOTAL SHEETS	SHEET NO.
	12-00044-00-PK	MONROE	9	1
FEDERAL AID PROJECT		ILLINOIS	CONTRACT NO. 97566	

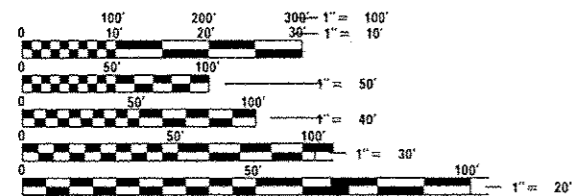
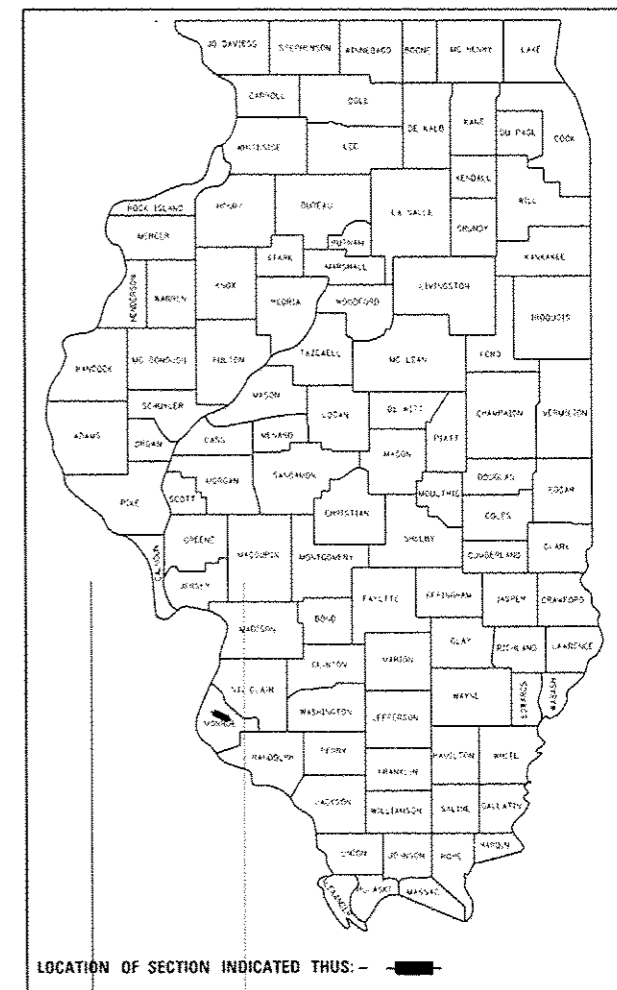
CONGESTION MITIGATION AND AIR QUALITY (CMAQ)

CITY OF WATERLOO PARK AND RIDE LOT

SECTION 12-00044-00-PK
PROJECT CMM-5011(380)
JOB NO. C-98-367-12
MONROE COUNTY

INDEX OF SHEETS

- 1 COVER
- 2 HIGHWAY STANDARDS, GENERAL NOTES AND UTILITIES
- 3 SUMMARY OF QUANTITIES
- 4-5 TYPICAL SECTIONS AND MISCELLANEOUS DETAILS
- 6 SCHEDULES OF QUANTITIES
- 7 OVERALL PLAN
- 8 PROPOSED IMPROVEMENTS
- 9 EXISTING TOPOGRAPHY AND REMOVALS



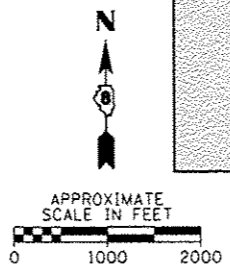
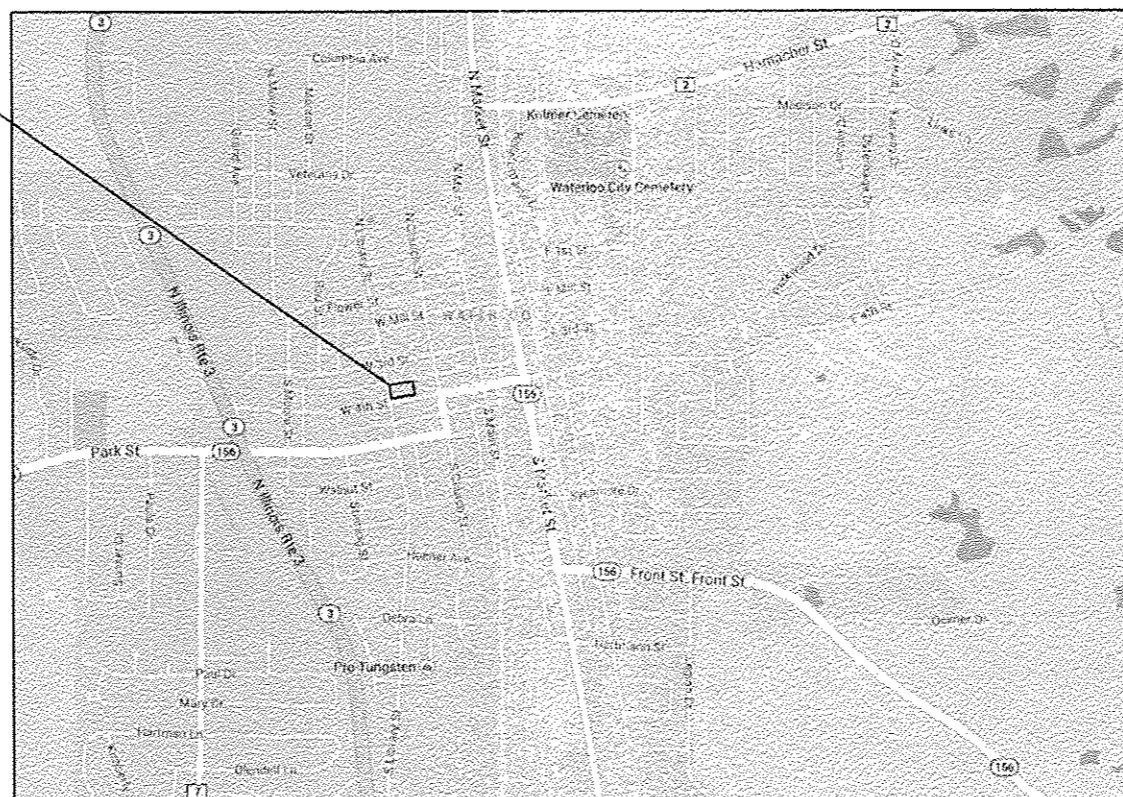
FULL SIZE PLANS HAVE BEEN PREPARED USING STANDARD ENGINEERING SCALES. REDUCED SIZED PLANS WILL NOT CONFORM TO STANDARD SCALES. IN MAKING MEASUREMENTS ON REDUCED PLANS, THE ABOVE SCALES MAY BE USED.

J.U.L.I.E.
JOINT UTILITY LOCATION INFORMATION FOR EXCAVATION
1-800-892-0123
OR 811

PRINTED BY THE AUTHORITY OF THE STATE OF ILLINOIS

PROJECT ENGINEER: KENT SCHWIERJOHN, P.E.
PROJECT MANAGER: SCOTT A. RAKERS, P.E.

PROJECT LOCATION



LOCATION MAP

NET AREA OF IMPROVEMENTS = 31,300 SQ FT = 0.72 ACRES

STATE OF ILLINOIS DEPARTMENT OF TRANSPORTATION	
APPROVED	<u>May 23 2014</u> <i>[Signature]</i> CITY OF WATERLOO, MAYOR
PASSED	<u>June 17 2014</u> <i>[Signature]</i> DISTRICT 8 ENGINEER OF LOCAL ROADS & STREETS
RELEASING FOR BID BASED ON LIMITED REVIEW	<u>June 17 2014</u> <i>[Signature]</i> DEPUTY DIRECTOR OF HIGHWAYS, REGION 5 ENGINEER



IDOT HIGHWAY STANDARDS

000001-06	STANDARD SYMBOLS, ABBREVIATIONS AND PATTERNS
001001-02	AREAS OF REINFORCEMENT BARS
001006	DECIMAL OF AN INCH AND OF A FOOT
280001-07	TEMPORARY EROSION CONTROL SYSTEMS
424021-02	DEPRESSED CORNER FOR SIDEWALKS
424026-01	ENTRANCE / ALLEY PEDESTRIAN CROSSINGS
442201-03	CLASS C AND D PATCHES
606001-05	CONCRETE CURB TYPE B AND COMBINATION CONCRETE CURB AND GUTTER
701001-02	OFF-ROAD OPERATIONS, 2L, 2W, MORE THAN 15' (4.5 M) AWAY
701006-05	OFF-ROAD OPERATIONS, 2L, 2W, 15' (4.5 M) TO 24" (600 MM) FROM PAVEMENT EDGE
701011-04	OFF-ROAD MOVING OPERATIONS, 2L, 2W, DAY ONLY
701301-04	LANE CLOSURE, 2L, 2W, SHORT TIME OPERATIONS
701501-06	URBAN LANE CLOSURE, 2L, 2W, UNDIVIDED
701801-05	SIDEWALK, CORNER OR CROSSWALK CLOSURE
701901-03	TRAFFIC CONTROL DEVICES
720001-01	SIGN PANEL MOUNTING DETAILS
720006-04	SIGN PANEL ERECTION DETAILS
720011-01	METAL POSTS FOR SIGNS, MARKERS AND DELINEATORS
729001-01	APPLICATIONS OF TYPES A AND B METAL POSTS (FOR SIGNS & MARKERS)
780001-04	TYPICAL PAVEMENT MARKINGS
BLR 25-1	TYPE 1A BARRICADE FOR NON-NHS ROUTES

JULIE DESIGN CONTACT INQUIRY

PHONE NO: 1-800-892-0123 OR 811
 DIG NO: A0590490

KNOWN UTILITY COMPANIES

CHARTER COMMUNICATIONS
 GARRY WARREN
 TELEPHONE: (618) 779-4179

HARRISONVILLE TELEPHONE
 THOMAS SCHRIEBER
 TELEPHONE: (618) 939-9256

CITY OF WATERLOO
 REGINA WETZLER
 TELEPHONE: (618) 939-8600 (X209)

GENERAL NOTES

1. ALL ELEVATIONS IN THE PLANS ARE BASED UPON THE NORTH AMERICAN VERTICAL DATUM OF 1988 (NAVD 88).
2. THE CONTRACTOR SHALL EXERCISE CARE IN PERFORMING REMOVALS SO AS NOT TO DISRUPT ADJOINING FEATURES THAT ARE TO REMAIN IN PLACE. ANY DAMAGE CAUSED TO ADJOINING FEATURES AS A RESULT OF THE CONTRACTOR'S NEGLIGENCE SHALL BE REPAIRED AT THE CONTRACTOR'S EXPENSE TO THE SATISFACTION OF THE ENGINEER.
3. THE PRIME CONTRACTOR SHALL BE RESPONSIBLE FOR ALL SUB-CONTRACTED WORK, REGARDLESS OF FUNDING SOURCE. THE SPECIAL PROVISIONS, SPECIFICATIONS, AND STANDARD SPECIFICATIONS SHALL GOVERN CONTRACTUAL REQUIREMENTS FOR SAID ARRANGEMENTS.
4. THE PRIME CONTRACTOR SHALL BE RESPONSIBLE FOR TRAFFIC CONTROL AND PROTECTION.
5. ALL SAW CUTTING REQUIRED FOR REMOVALS SHALL BE INCLUDED IN THE CONTRACT UNIT PRICE PER UNIT OF REMOVAL QUANTITIES.
6. THE CONTRACTOR SHALL EXERCISE CARE IN EXCAVATING AROUND EXISTING UTILITIES TO REMAIN IN PLACE, SUCH AS WATER AND SEWER LINES AND THEIR APPURTENANCES. THE CONTRACTOR SHALL BE RESPONSIBLE FOR REPAIR OF THESE AND MAINTENANCE OF SERVICE, IF DAMAGED BY THE CONTRACTOR'S ACTIVITIES, AS DEEMED SUCH BY THE ENGINEER.
7. THE CONTRACTOR SHALL BE RESPONSIBLE FOR ESTABLISHING POSITIVE DRAINAGE IN THE DISTURBED AREAS, TO THE SATISFACTION OF THE ENGINEER.
8. ALL AREAS THAT ARE DISTURBED BEYOND THE LIMITS SHOWN SHALL BE REPAIRED BY THE CONTRACTOR AT HIS/HER EXPENSE AND TO THE SATISFACTION OF THE ENGINEER.
9. IN ADDITION TO WARNING SIGNS SHOWN ON THE STANDARDS FOR TRAFFIC CONTROL, ROAD CONSTRUCTION AHEAD SIGNS SHALL BE PLACED ON INTERSECTING SIDE ROADS THROUGHOUT THE WORK ZONE.
11. ALL ADVANCED WARNING SIGNS SHALL BE 48" FLUORESCENT ORANGE & INCLUDE LOW INTENSITY FLASHING LIGHTS.
12. THE FOLLOWING RATES OF APPLICATION HAVE BEEN USED IN CALCULATING PLAN QUANTITIES:

AGGREGATE MATERIALS	2.05 TONS/CU YD
HOT-MIX ASPHALT	112 LBS/SO YD/INCH OR 2.016 TONS/CU YD
BITUMINOUS PRIME COAT	0.375 GAL/SO YD (AGG. SURFACE)

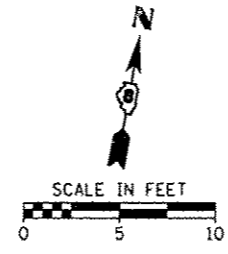
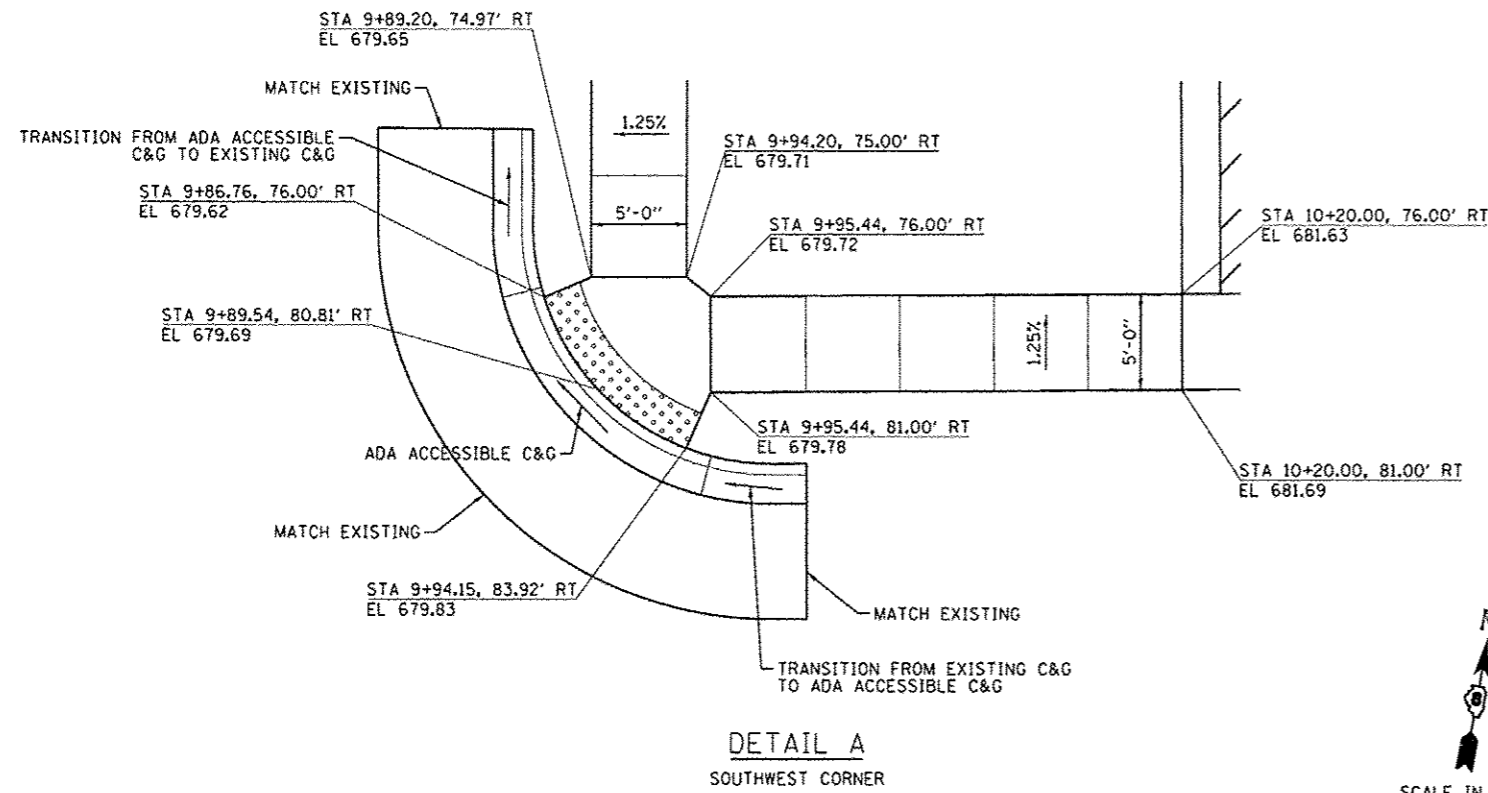
COMMITMENTS

NONE

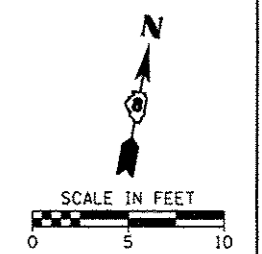
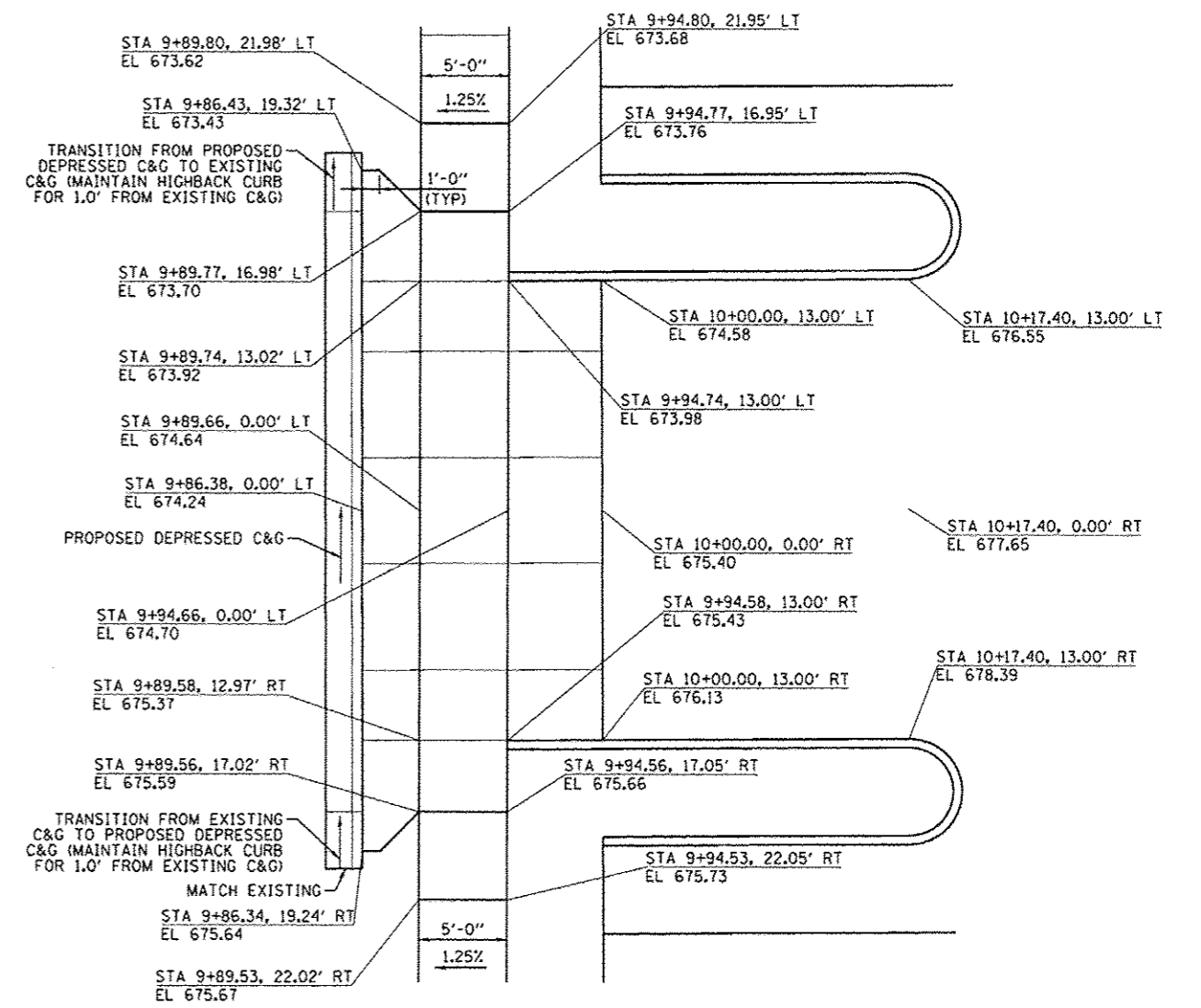
FILE NAME :	USER NAME : kschwartzjohn	DESIGNED -	REVISED -	STATE OF ILLINOIS DEPARTMENT OF TRANSPORTATION	HIGHWAY STANDARDS, GENERAL NOTES AND UTILITIES	F.A. RTE.	SECTION	COUNTY	TOTAL SHEETS	SHEET NO.	
H:\6952 Waterloo CMAQ Design BusPark&Rte\VCADD_Sheets\6952-SHT-GENNOTE.dgn	DRAWN -	REVISED -	REVISED -			12-00044-00-PK	MONROE	9	2		
PLOT SCALE = 1/8"=1'-0"	CHECKED -	REVISED -	REVISED -			CONTRACT NO. 97566					
Default	DATE -	REVISED -	REVISED -			SCALE:	SHEET	OF	SHEETS	STA.	TO
						HWG JOB NO 6952		ILLINOIS FED. AID PROJECT			

SUMMARY OF QUANTITIES

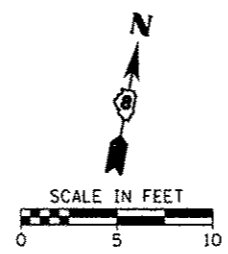
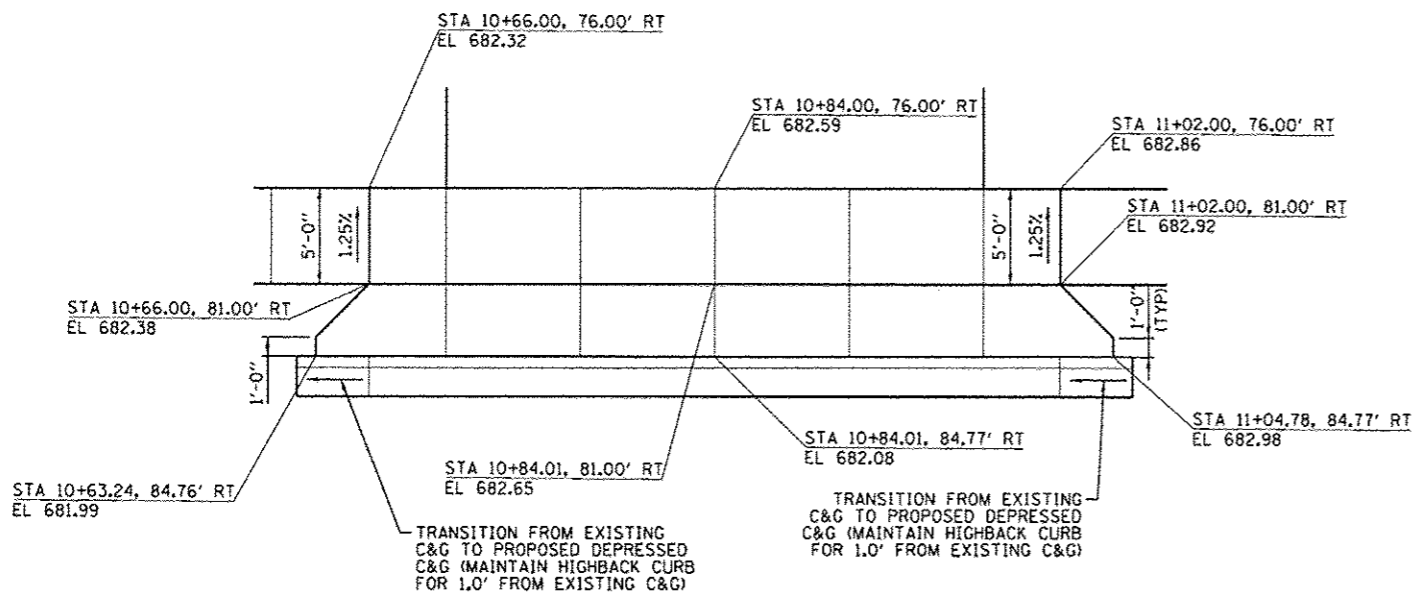
SPEC. PROV. SPECIALTY ITEM	CODE NO.	ITEM DESCRIPTION	UNIT	TOTAL QUANTITY
•	20200100	EARTH EXCAVATION	CU YD	45
	28100107	STONE RIPRAP, CLASS A4	SQ YD	105
•	35100100	AGGREGATE BASE COURSE, TYPE A	TON	2,028
	40600100	BITUMINOUS MATERIALS (PRIME COAT)	GALLON	979
	40603000	HOT-MIX ASPHALT BINDER COURSE, IL-12.5, N50	TON	293
	40603310	HOT-MIX ASPHALT SURFACE COURSE, MIX "C", N50	TON	293
	40800050	INCIDENTAL HOT-MIX ASPHALT SURFACING	TON	17
	42300400	PORTLAND CEMENT CONCRETE DRIVEWAY PAVEMENT, 8 INCH	SQ YD	85
	42400200	PORTLAND CEMENT CONCRETE SIDEWALK 5 INCH	SQ FT	1,309
	42400800	DETECTABLE WARNINGS	SQ FT	45
	44000100	PAVEMENT REMOVAL	SQ YD	107
	44000200	DRIVEWAY PAVEMENT REMOVAL	SQ YD	48
	44000500	COMBINATION CURB AND GUTTER REMOVAL	FOOT	112
	44000600	SIDEWALK REMOVAL	SQ FT	1,260
	44201771	CLASS D PATCHES, TYPE IV, 10 INCH	SQ YD	23
•	60600605	CONCRETE CURB, TYPE B	FOOT	100
•	60604400	COMBINATION CONCRETE CURB AND GUTTER, TYPE B-6.18	FOOT	112
	67100100	MOBILIZATION	L SUM	1
•	72400100	REMOVE SIGN PANEL ASSEMBLY - TYPE A	EACH	12
•	72400500	RELOCATE SIGN PANEL ASSEMBLY - TYPE A	EACH	12
•	78000100	THERMOPLASTIC PAVEMENT MARKING - LETTERS AND SYMBOLS	SQ FT	80
•	78000200	THERMOPLASTIC PAVEMENT MARKING - LINE 4"	FOOT	1,608
•	X0301339	REMOVE EXISTING PARKING BLOCKS	EACH	40
•	X0696100	PARKING BLOCKS	EACH	37
•	X7010216	TRAFFIC CONTROL AND PROTECTION, (SPECIAL)	L SUM	1



DETAIL A
SOUTHWEST CORNER



DETAIL C
ENTRANCE (WEST)



DETAIL B
ENTRANCE (SOUTH)

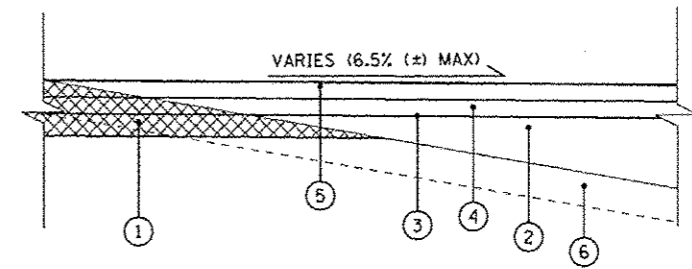
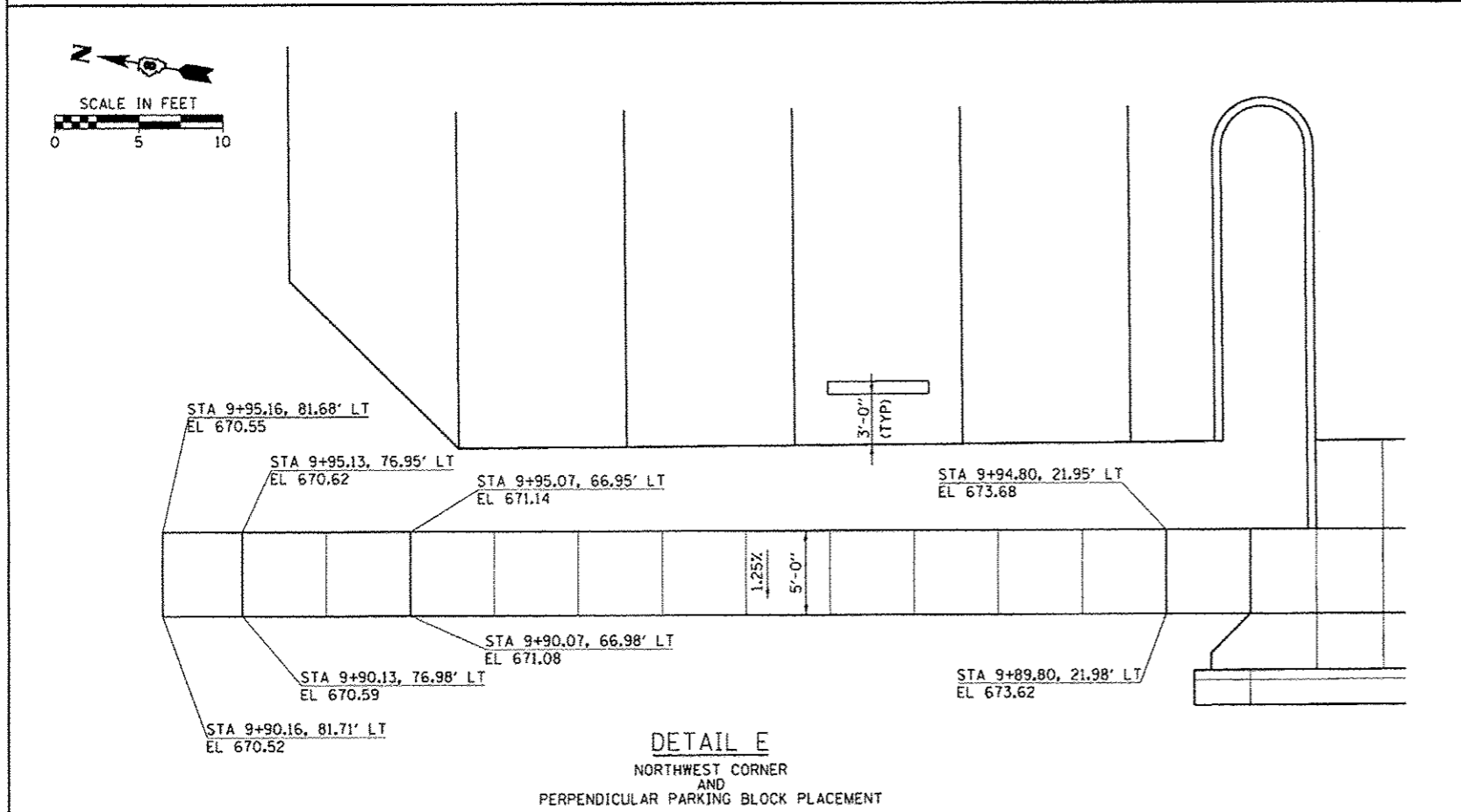
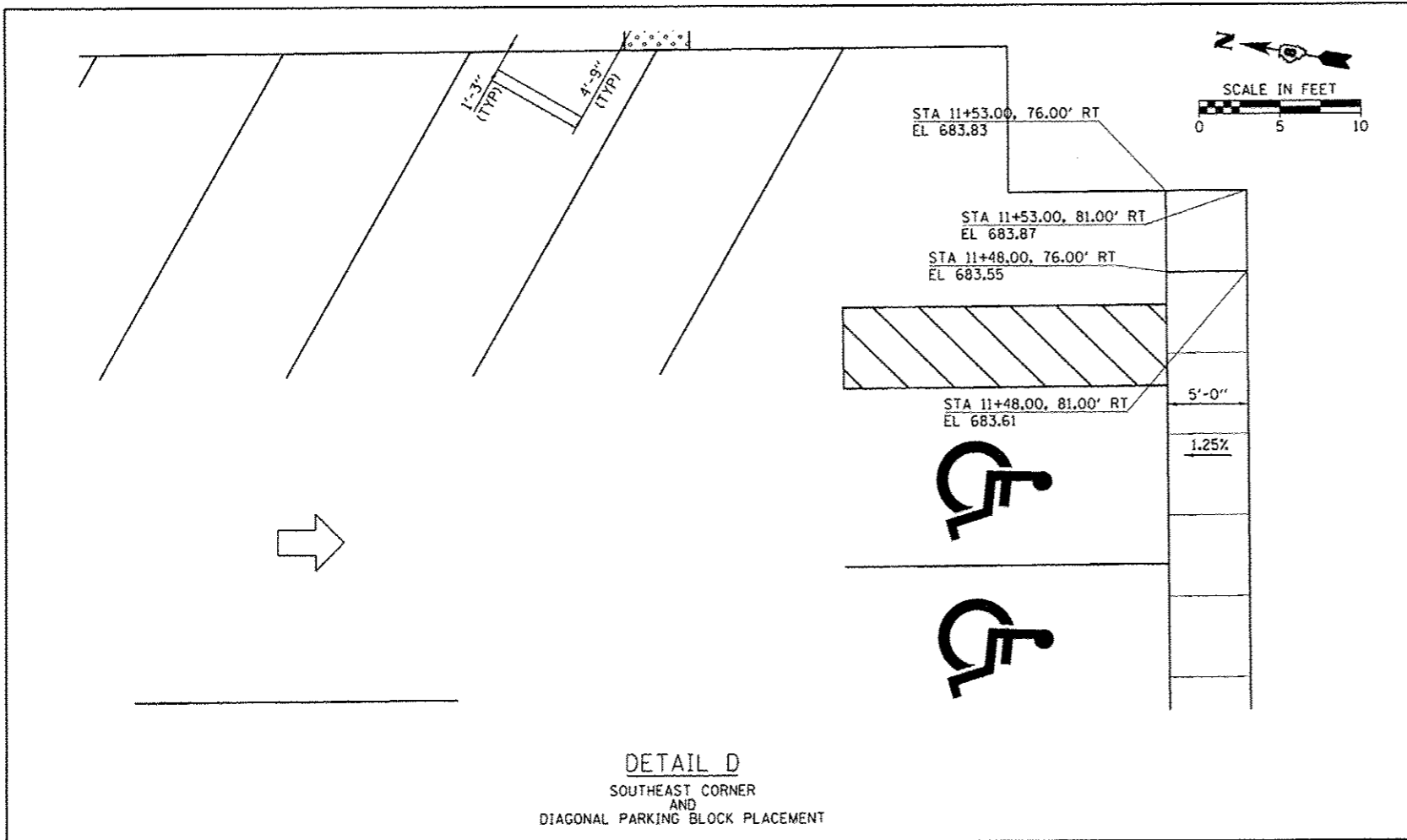
FILE NAME =	USER NAME = kschwarz-john	DESIGNED -	REVISED -
H:\6952 Waterloo CHAD Design BusPark&R	\\CADD_Sheets\6952-SHT-TYPICAL.dgn	DRAWN -	REVISED -
Default	PLOT SCALE = 5.0000' / 1" =	CHECKED -	REVISED -
	PLOT DATE = 5/16/2014	DATE -	REVISED -

STATE OF ILLINOIS
DEPARTMENT OF TRANSPORTATION

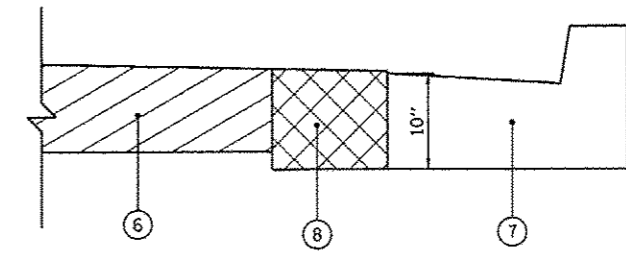
TYPICAL SECTIONS AND MISCELLANEOUS DETAILS

SCALE:	SHEET	OF	SHEETS	STA.	TO	STA.
--------	-------	----	--------	------	----	------

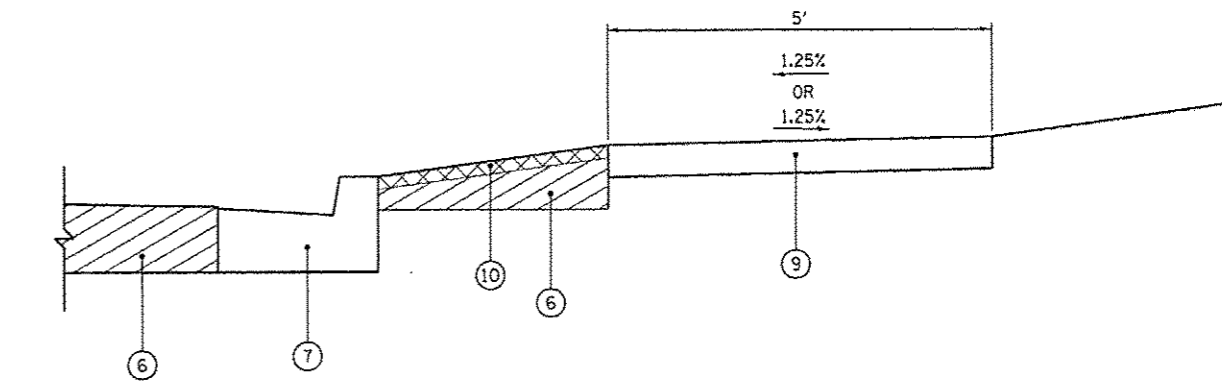
F.A. RTE.	SECTION	COUNTY	TOTAL SHEETS	SHEET NO.
	12-00044-00-PK	MONROE	9	4
CONTRACT NO. 97566			ILLINOIS FED. AID PROJECT	



TYPICAL SECTION - PARK AND RIDE LOT



TYPICAL SECTION - CLASS D PATCH



TYPICAL SECTION - INCIDENTAL HOT-MIX ASPHALT SURFACING AND SIDEWALK

TYPICAL SECTION LEGEND

- 1 EARTH EXCAVATION
- 2 AGGREGATE BASE COURSE, TYPE A
- 3 BITUMINOUS MATERIALS (PRIME COAT)
- 4 HOT-MIX ASPHALT BINDER COURSE, IL-12.5, N50 (2")
- 5 HOT-MIX ASPHALT SURFACE COURSE, MIX "C", N50 (2")
- 6 EXISTING PAVEMENT
- 7 EXISTING OR PROPOSED CURB AND GUTTER
- 8 CLASS D PATCH
- 9 PORTLAND CEMENT CONCRETE SIDEWALK 5 INCH
- 10 INCIDENTAL HOT-MIX ASPHALT SURFACING (2")

PAVING SCHEDULE

LOCATION	AGG BASE COURSE, TYPE A	BITUMINOUS MATERIALS (PRIME COAT)	HMA BINDER COURSE, IL-12.5, (N50)	HMA SURFACE COURSE, MIX "C", N50	INCIDENTAL HMA SURFACING	STONE RIPRAP, CLASS A4	PCC SIDEWALK 5 INCH	PCC DRIVEWAY PAVEMENT, 8 INCH	DETECTABLE WARNINGS	CLASS D PATCHES, TYPE IV, 10 INCH	CONCRETE CURB, TYPE B	COMBINATION CONCRETE CURB AND GUTTER, TYPE B-6.18	THERMOPLASTIC PAVEMENT MARKING - LINE 4"		THERMOPLASTIC PAVEMENT MARKING - LETTERS AND SYMBOLS	
	TON	GALLON	TON	TON	TON	SO YD	SO FT	SO YD	SO FT	SO YD	FOOT	FOOT	FOOT		SO FT	
													YELLOW	WHITE	YELLOW	WHITE
PARK AND RIDE LOT																
10+00.00 TO 11+62.00	LT	959.6	490.4	146.5	146.5	2.8	67.5							632.4		26.0
10+00.00 TO 11+62.00	RT	1047.0	487.7	145.7	145.7	14.1	37.0						599.8	375.5	27.6	26.0
10+00.00 TO 10+20.40	LT										49.5					
10+00.00 TO 10+20.40	RT										49.7					
SIDEWALK (WEST)																
9+86.76 TO 9+94.16	LT							667.0	20.9							
9+78.14 TO 10+00.41	RT									22.7						
9+85.63 TO 11+00.41	RT											27.3				
SIDEWALK (SOUTH)																
9+93.16 TO 10+66.00	RT						352.8									
11+02.01 TO 11+53.00	RT						255.0									
SIDEWALK (EAST)																
11+62.00 TO 11+66.23	LT						17.7		12.0							
11+62.00 TO 11+66.15	RT						16.1		12.0							
ENTRANCE (WEST)																
9+86.38 TO 10+00.00								47.8				40.6				
9+85.85																
ENTRANCE (SOUTH)																
10+63.24 TO 11+04.78	RT							36.5				43.5				
10+62.24 TO 11+05.75	RT															
ENTRANCE (NORTHEAST)																
11+62.00 TO 11+86.53	LT	21.2														
TOTAL		2027.8	978.1	292.1	292.1	16.9	104.5	1308.6	84.3	44.9	22.7	99.2	111.4	1,607.7		79.6
USE		2,028	979	293	293	17	105	1,309	85	45	23	100	112	1,608		80

NOTES:

1 FOR STONE RIPRAP, CLASS A4 LEFT, ONLY 30% OF THE ENTIRE AREA WAS USED TO CALCULATE THIS QUANTITY. THIS QUANTITY ALLOWS FOR TOUCH UP OF THE EXISTING RIPRAP AND PLACEMENT OF THE NEW RIPRAP.

SIGN PANEL SCHEDULE

LOCATION	SIGN CONTENTS	REMOVE SIGN PANEL ASSEMBLY - TYPE A	RELOCATE SIGN PANEL ASSEMBLY - TYPE A
		EACH	EACH
9+93.53 82.1' RT	STREET NAMES	1	1
9+96.69 22.6' RT	PUBLIC PARKING (TWO-SIDED)	1	1
10+01.09 84.2' RT	STOP	1	1
10+69.99 82.6' RT	PUBLIC PARKING	1	1
11+01.63 82.3' RT	PUBLIC PARKING	1	1
11+09.14 75.9' RT	HANDICAP PARKING	1	1
11+24.21 76.0' RT	HANDICAP PARKING	1	1
11+38.99 76.2' RT	HANDICAP PARKING	1	1
11+50.64 83.3' RT	BUS STOP	1	1
11+65.23 32.2' RT	HANDICAP PARKING	1	1
11+65.49 14.3' RT	HANDICAP PARKING	1	1
11+65.61 44.5' RT	HANDICAP PARKING	1	1
TOTAL		12	12
USE		12	12

EARTHWORK SCHEDULE

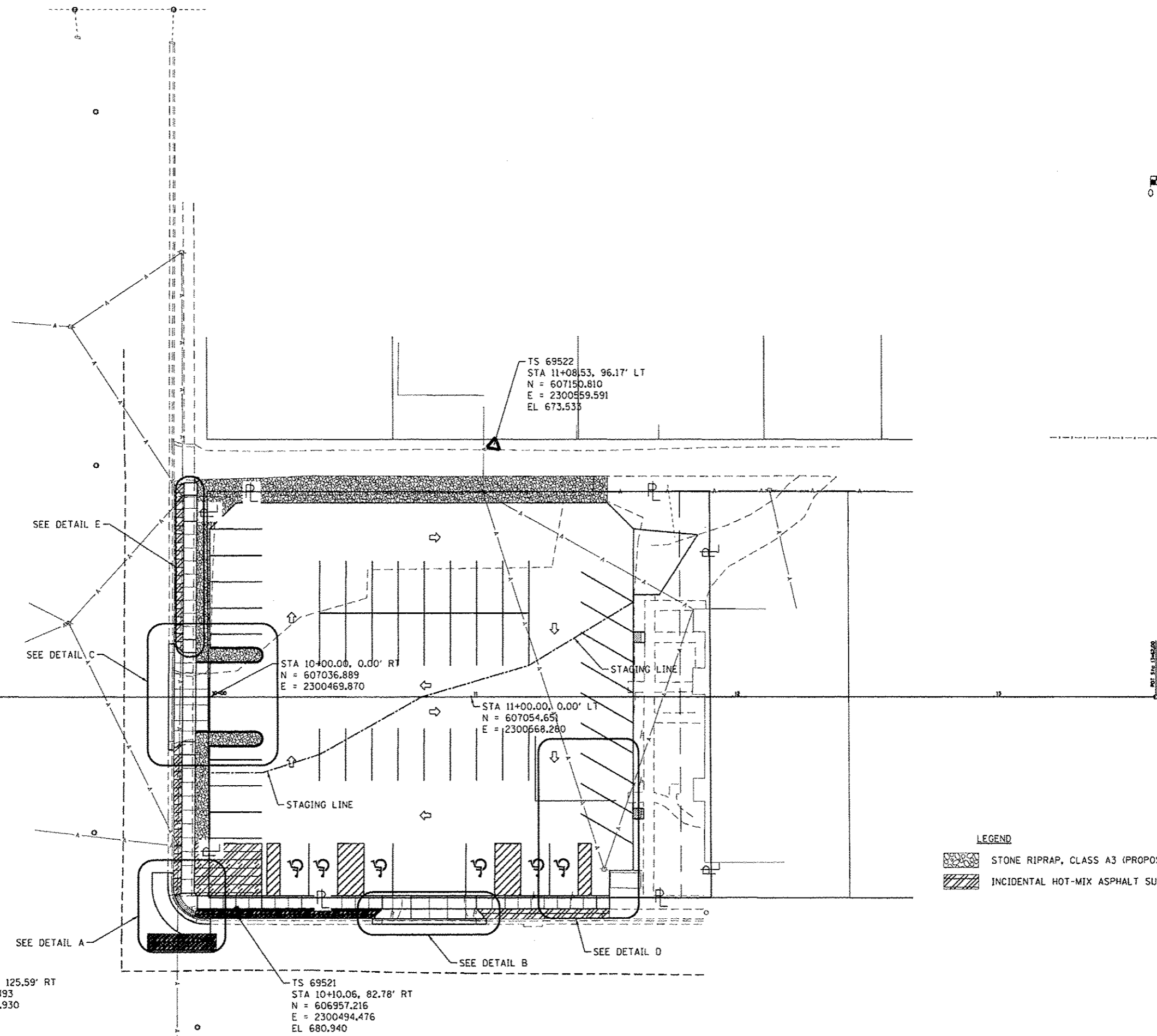
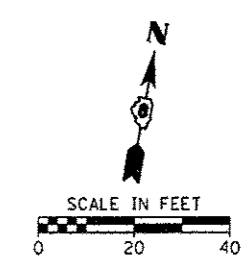
LOCATION	A	B	C	D	
	EARTH EXCAVATION	EXCAVATION TO BE USED IN EMBANKMENT ADJUSTED FOR SHRINKAGE/LOSS	REQUIRED FILL	EARTHWORK BALANCE SURPLUS (+) OR SHORTAGE (-)	
	CU YD	CU YD	CU YD	CU YD	
PARK AND RIDE LOT					
10+20.00 TO 11+72.00	LT	0.0	0.0	2.3	-2.3
10+20.00 TO 11+62.00	RT	40.6	30.5	5.4	25.1
TOTAL		40.6	30.5	7.7	22.7
USE		45	35	10	25

NOTES:

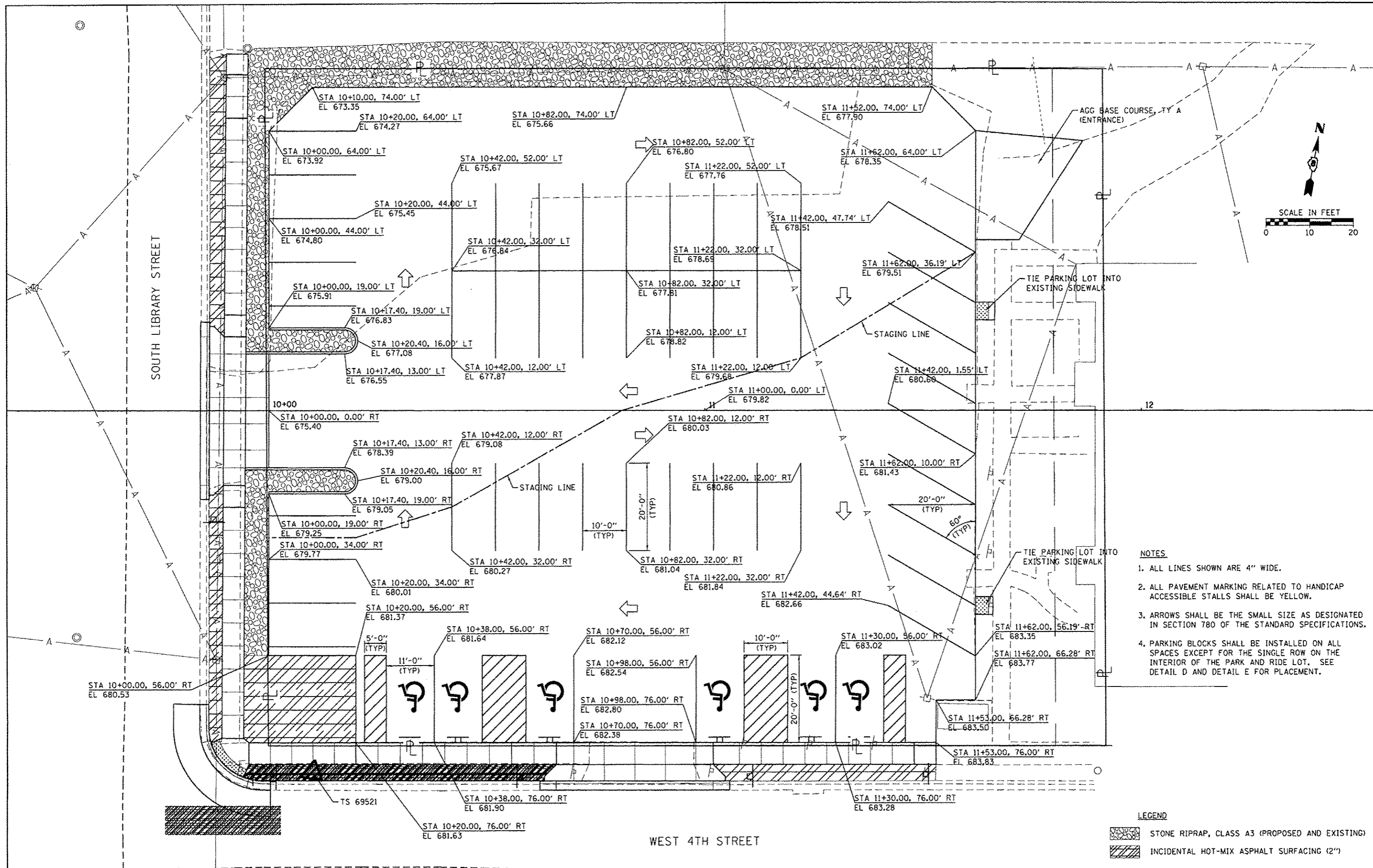
- COLUMN "A" IS THE ESTIMATED EXCAVATION REQUIRED. SEE SPECIAL PROVISIONS FOR DETAILS ON PAYMENT.
- COLUMN "B" IS THE ESTIMATED AMOUNT OF MATERIAL THAT WOULD BE AVAILABLE FOR FILL AFTER APPLYING A SHRINKAGE/LOSS FACTOR OF 25%. (NOT A PAY ITEM)
- COLUMN "C" IS THE ESTIMATED FILL REQUIRED OUTSIDE OF THE PARK AND RIDE LOT. (NOT A PAY ITEM)
- COLUMN "D" IS THE ESTIMATED AMOUNT OF MATERIAL (SURPLUS OR SHORTAGE) AFTER CONSTRUCTION OF THE PROPOSED IMPROVEMENTS. (NOT A PAY ITEM)

REMOVAL SCHEDULE

LOCATION	PAVEMENT REMOVAL	DRIVEWAY PAVEMENT REMOVAL	COMBINATION CURB AND GUTTER REMOVAL	SIDEWALK REMOVAL
	SO YD	SO YD	FOOT	SO FT
WEST SIDE				
9+86.24 TO 9+90.16	LT	28.4		
9+86.39 TO 9+89.51	RT	19.8	22.8	
9+85.85 TO				40.6
9+85.63 TO 11+00.41	RT			27.3
9+89.69 TO 9+94.11	LT			280.9
9+86.39 TO 9+94.65	RT			266.0
SOUTH SIDE				
9+89.87 TO 10+73.54	RT	35.1		
10+97.54 TO 11+52.96	RT	23.5	24.6	
10+62.24 TO 11+05.78	RT			43.5
9+94.65 TO 10+73.62	RT			387.8
10+97.54 TO 11+53.00	RT			275.6
EAST SIDE				
11+60.00 TO 11+66.23	LT			25.8
11+60.01 TO 11+66.15	RT			23.7
TOTAL		106.9	47.4	111.4
USE		107	48	112



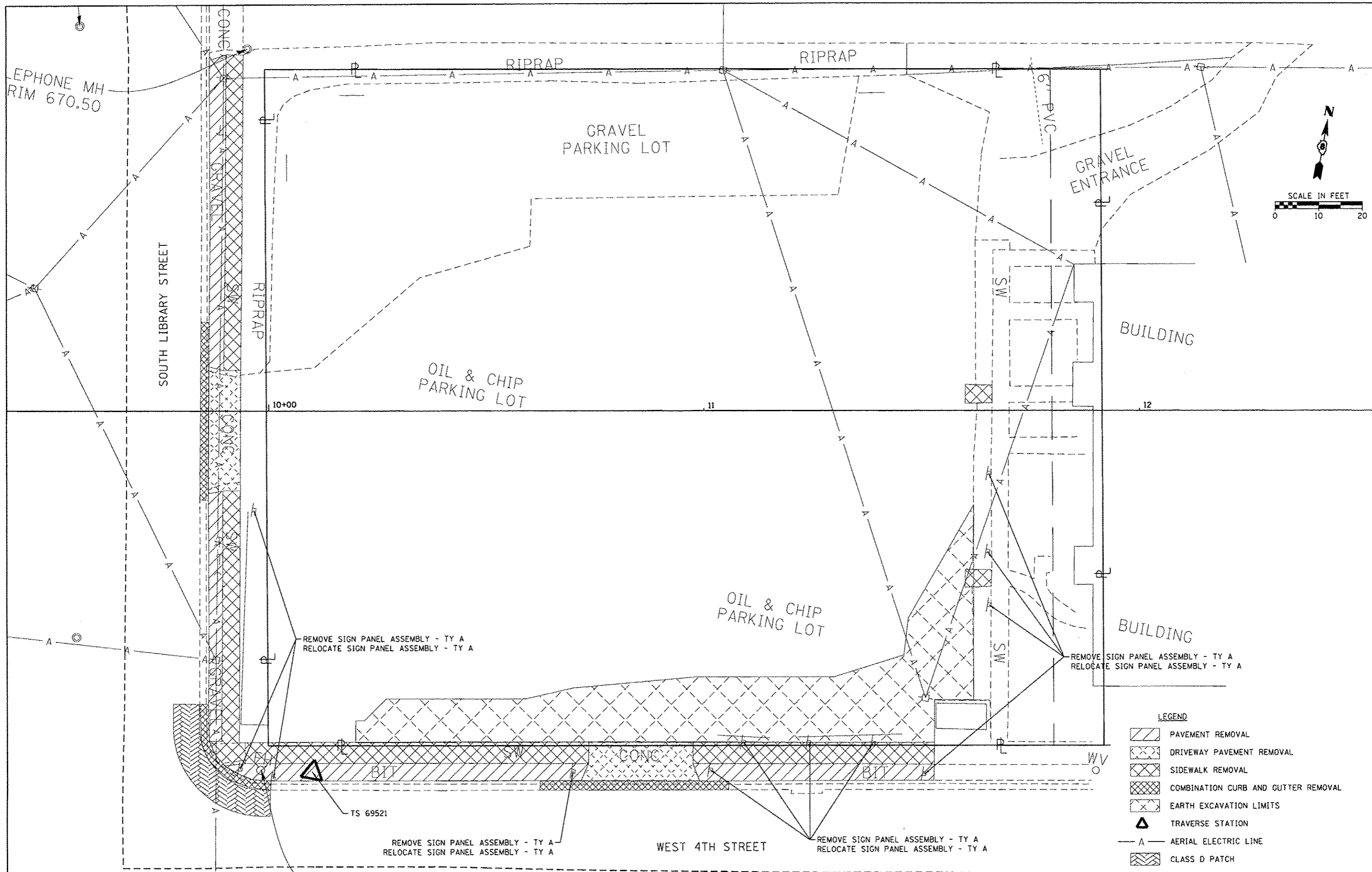
FILE NAME = H:\6952 Waterloo CMAQ Design BusPark&Rt\12-00044-Sheets\6952-SHT-PLAN OVERALL.dgn	USER NAME = hschwier.john	DESIGNED -	REVISED -	STATE OF ILLINOIS DEPARTMENT OF TRANSPORTATION	OVERALL PLAN			F.A. RTE.	SECTION	COUNTY	TOTAL SHEETS	SHEET NO.	
Default	PLT SCALE = 20.0280' / in.	CHECKED -	REVISED -		SCALE:	SHEET	OF	SHEETS	STA.	TO STA.	12-00044-00-PK	9	7
	PLT DATE = 5/16/2014	DATE -	REVISED -					HMC JOB NO 6952		ILLINOIS FED. AID PROJECT			
											CONTRACT NO. 97566		



- NOTES**
1. ALL LINES SHOWN ARE 4" WIDE.
 2. ALL PAVEMENT MARKING RELATED TO HANDICAP ACCESSIBLE STALLS SHALL BE YELLOW.
 3. ARROWS SHALL BE THE SMALL SIZE AS DESIGNATED IN SECTION 780 OF THE STANDARD SPECIFICATIONS.
 4. PARKING BLOCKS SHALL BE INSTALLED ON ALL SPACES EXCEPT FOR THE SINGLE ROW ON THE INTERIOR OF THE PARK AND RIDE LOT. SEE DETAIL D AND DETAIL E FOR PLACEMENT.

- LEGEND**
- STONE RIPRAP, CLASS A3 (PROPOSED AND EXISTING)
 - INCIDENTAL HOT-MIX ASPHALT SURFACING (2")

FILE NAME <	USER NAME = kechsterjohn	DESIGNED -	REVISED -	STATE OF ILLINOIS DEPARTMENT OF TRANSPORTATION	PROPOSED IMPROVEMENTS			F.A. RTE.	SECTION	COUNTY	TOTAL SHEETS	SHEET NO.
H:\6952 Waterloo CMAQ Design BusPark&Ride\CADD_Sheets\6952-SHT-PROPOSED IMPROVEMENTS	DRAWN -	REVISED -	12-00044-00-PK					MONROE	9	8		
Default	CHECKED -	REVISED -	CONTRACT NO. 97566									
	DATE -	REVISED -	SCALE:		SHEET	OF	SHEETS	STA.	TO	STA.	HWD JOB NO 6952	ILLINOIS FED. AID PROJECT



- LEGEND**
- PAVEMENT REMOVAL
 - DRIVEWAY PAVEMENT REMOVAL
 - SIDEWALK REMOVAL
 - COMBINATION CURB AND GUTTER REMOVAL
 - EARTH EXCAVATION LIMITS
 - TRAVERSE STATION
 - AERIAL ELECTRIC LINE
 - CLASS D PATCH

FILE NAME =	USER NAME = kschusterjohn	DESIGNED -	REVISED -
H:\6952 Waterloo CMAG Design BusPark&B...	to\CAD\00_Sheets\6952-SHT-REMOVALS.dgn	DRAWN -	REVISED -
Default	PLOT SCALE = 1/8"=1'-0"	CHECKED -	REVISED -
	PLOT DATE = 5/16/2014	DATE -	REVISED -

**STATE OF ILLINOIS
DEPARTMENT OF TRANSPORTATION**

EXISTING TOPOGRAPHY AND REMOVALS			
SCALE:	SHEET	OF SHEETS	STA. TO STA.

E.A. RTE.	SECTION	COUNTY	TOTAL SHEETS	SHEET NO.
	12-00044-00-PK	MONROE	9	9
HWY JOB NO 6952		ILLINOIS FED. AID PROJECT		
		CONTRACT NO. 97566		