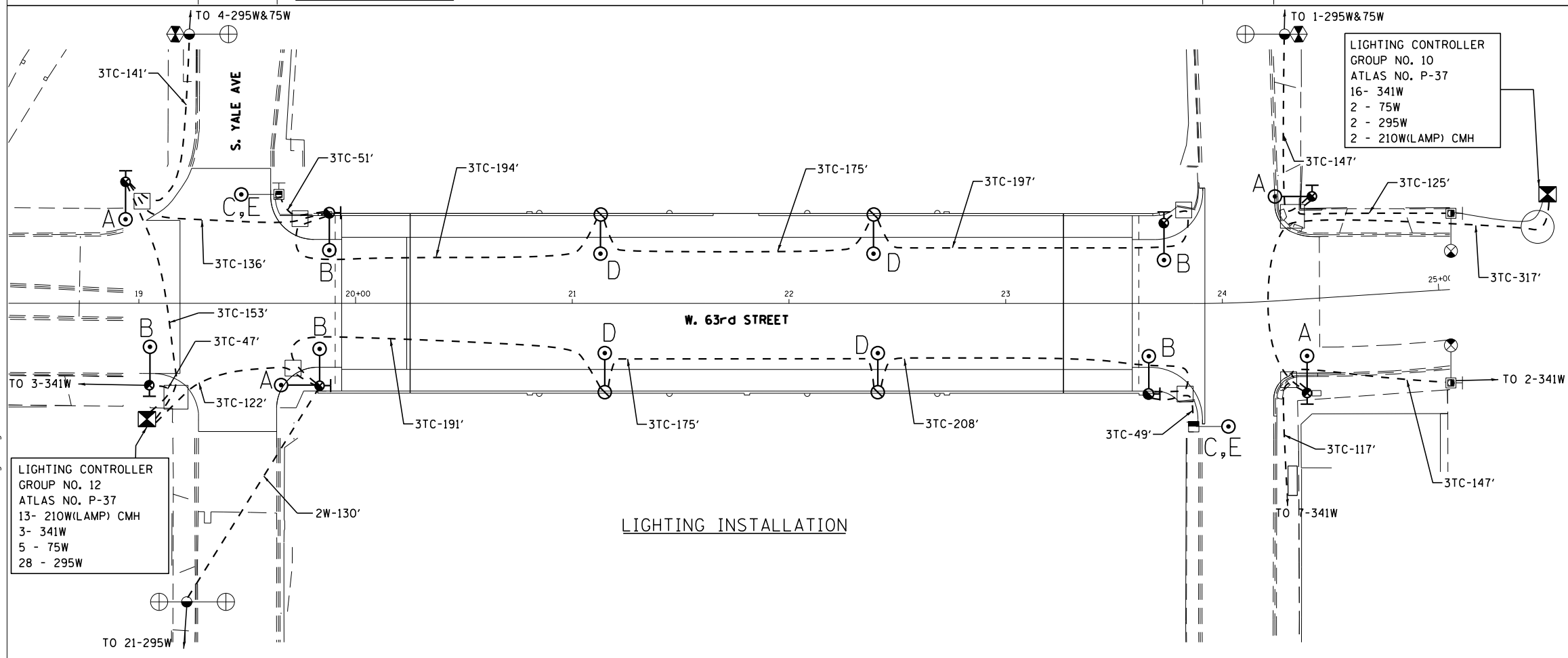


- REMOVAL LEGENDS:**
- "U" -- REMOVE LIGHTING MAST ARM AND LUMINAIRE
SEE TRAFFIC SIGNAL PLANS FOR POLE AND FOUNDATION REMOVAL
 - "V" -- REMOVE LIGHT POLE, MAST ARM AND LUMINAIRE MOUNTED ON BRIDGE STRUCTURE
 - "W" -- REMOVE EMBEDDED LIGHT POLE, MAST ARM AND LUMINAIRE
 - "X" -- REMOVE LUMINAIRE ONLY



- INSTALLATION LEGENDS:**
- "A" -- INSTALL 15FT STEEL MAST ARM AND 210W CMH SEMI-CUTOFF COBRAHEAD LUMINAIRE ON TRAFFIC SIGNAL POLE
SEE TRAFFIC SIGNAL PLANS FOR POLE AND FOUNDATION
 - "B" -- INSTALL 8FT STEEL MAST ARM AND 210W CMH SEMI-CUTOFF COBRAHEAD LUMINAIRE ON TRAFFIC SIGNAL POLE
SEE TRAFFIC SIGNAL PLANS FOR POLE AND FOUNDATION
 - "C" -- INSTALL 210W CMH SEMI-CUTOFF COBRAHEAD LUMINAIRE ON EXISTING LIGHT POLE
 - "D" -- INSTALL 8FT STEEL MAST ARM, 210W CMH SEMI-CUTOFF COBRAHEAD LUMINAIRE AND STEEL LIGHT POLE, BLACK PAINT, 32'-6", 11 1/2" B.C. ANCHOR BASE..
 - "E" -- PAINT LIGHT POLE BLACK PER STANDARDS
 - "3TC" -- INSTALL TRIPLEX CABLE, 600V, 2-1/C*6, 1/C*8 (GREEN) GND IN CONDUIT
 - "2W" -- INSTALL 2-1/C*6 HDNS. AERIAL CABLE

J:\298\Draw\CADD_Sheets\CDOT\160J15-sht1-CDDT160J15.dgn

LIGHTING CONTROLLER
GROUP NO. 12
ATLAS NO. P-37
13- 210W(LAMP) CMH
3- 341W
5 - 75W
28 - 295W

LIGHTING CONTROLLER
GROUP NO. 10
ATLAS NO. P-37
16- 341W
2 - 75W
2 - 295W
2 - 210W(LAMP) CMH

E-10
DEO
SHEET NO.



USER NAME = kprajapati	DESIGNED - BN	REVISED -
PLOT SCALE = 60.000000:1.000000	DRAWN - AM	REVISED -
PLOT DATE = 15-MAY-2013 17:26	CHECKED - KGP	REVISED -
	DATE - 5/15/2013	REVISED -

CITY OF CHICAGO
DEPARTMENT OF TRANSPORTATION
DIVISION OF ENGINEERING

63rd STREET OVER DAN RYAN EXPRESSWAY (I-90 /94)
STREET LIGHTING REMOVAL AND INSTALLATION PLAN

SCALE: N.T.S. SHEET NO. 10 OF 13 SHEETS STA. TO STA.

F.A.I. RTE.	SECTION	COUNTY	TOTAL SHEETS	SHEET NO.
94	1920-B	COOK	137	56
CONTRACT NO. 60J15				
FED. ROAD DIST. NO. 1 ILLINOIS FED. AID PROJECT				