

STANDARD BAR SPLICER ASSEMBLY

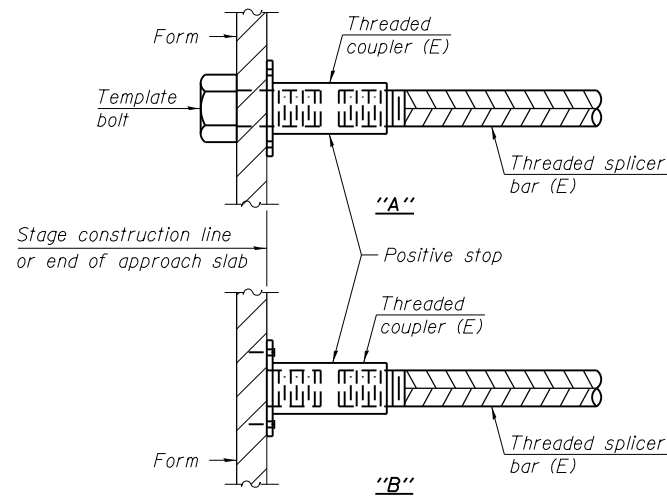
Minimum Lap Lengths						
Bar size to be spliced	Table 1	Table 2	Table 3	Table 4	Table 5	Table 6
3, 4	1'-5"	1'-11"	2'-1"	2'-4"	2'-7"	2'-11"
5	1'-9"	2'-5"	2'-7"	2'-11"	3'-3"	3'-8"
6	2'-1"	2'-11"	3'-1"	3'-6"	3'-10"	4'-5"
7	2'-9"	3'-10"	4'-2"	4'-8"	5'-2"	5'-10"
8	3'-8"	5'-1"	5'-5"	6'-2"	6'-9"	7'-8"
9	4'-7"	6'-5"	6'-10"	7'-9"	8'-7"	9'-8"

- Table 1: Black bar, 0.8 Class C
- Table 2: Black bar, Top bar lap, 0.8 Class C
- Table 3: Epoxy bar, 0.8 Class C
- Table 4: Epoxy bar, Top bar lap, 0.8 Class C
- Table 5: Epoxy bar, Class C
- Table 6: Epoxy bar, Top bar lap, Class C

Threaded splicer bar length = min. lap length + 1/2" + thread length

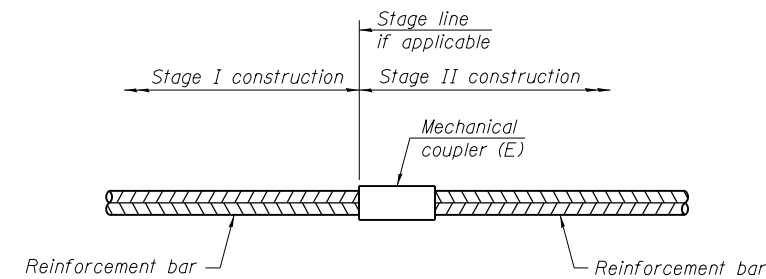
* Epoxy not required on Bar Splicer Assembly components used in conjunction with black bars.

Location	Bar size	No. assemblies required	Table for minimum lap length
Deck	#5	2,152	5
Approach Slab	#4	100	6
Approach Slab	#5	344	5
West Abutment	#5	19	6
East Abutment	#5	19	6
Pier 1 Cap, Top	#9	6	6
Pier 1 Cap, Bottom	#9	7	5
Pier 1 Cap, Side	#5	10	6
Pier 1 Crashwall	#5	9	6
Pier 2 Cap, Top	#9	6	6
Pier 2 Cap, Bottom	#9	7	5
Pier 2 Cap, Side	#5	10	6
Pier 3 Cap, Top	#9	6	6
Pier 3 Cap, Bottom	#9	7	5
Pier 3 Cap, Side	#5	10	6
Pier 4 Cap, Top	#9	6	6
Pier 4 Cap, Bottom	#9	7	5
Pier 4 Cap, Side	#5	10	6
Pier 4 Crashwall	#5	9	6



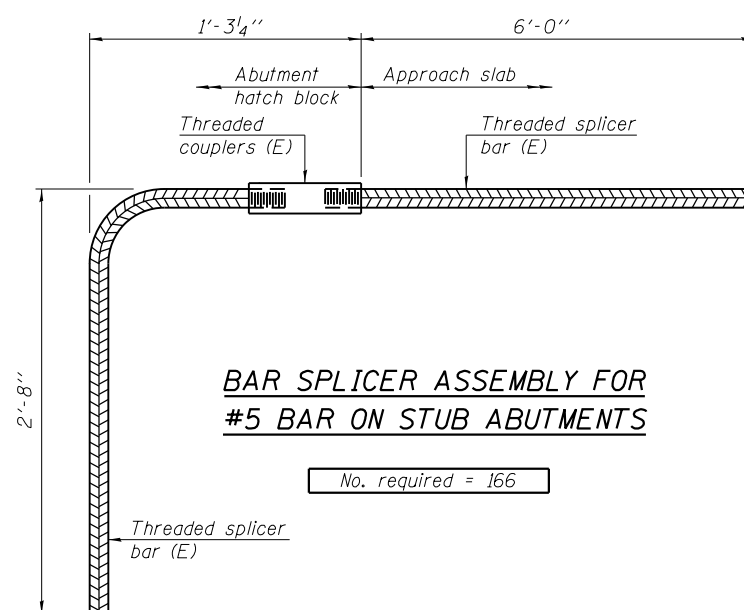
INSTALLATION AND SETTING METHODS

"A" : Set bar splicer assembly by means of a template bolt.
 "B" : Set bar splicer assembly by nailing to wood forms or cementing to steel forms.
 (E) : Indicates epoxy coating.



STANDARD MECHANICAL SPLICER

Location	Bar size	No. assemblies required



BAR SPLICER ASSEMBLY FOR #5 BAR ON STUB ABUTMENTS

No. required = 166

NOTES

Splicer bars shall be deformed with threaded ends and have a minimum 60 ksi yield strength.
 All reinforcement shall be lapped and tied to the splicer bars.
 Bar splicer assemblies shall be epoxy coated according to the requirements for reinforcement bars. See Section 508 of the Standard Specifications.
 See approved list of bar splicer assemblies and mechanical splicers for alternatives.

H:\projects\2013\0223\CAD\Structural\06-1149-Final\00\160105-s49-bar-splicer-dt.dgn 5/20/2013 11:24:49 AM

BSD-1 8-31-12

GR&E
 8501 W. Higgins Road, Suite 280
 Chicago, Illinois 60631 (773) 399-0112

USER NAME =	DESIGNED - J.Z.	REVISED -
PLOT SCALE =	CHECKED - J.A.Z.	REVISED -
PLOT DATE =	DRAWN - E.E.J.	REVISED -
	DATE - 5/17/2013	REVISED -

**STATE OF ILLINOIS
 DEPARTMENT OF TRANSPORTATION**

**BAR SPLICER ASSEMBLY DETAILS
 STRUCTURE NO. 016-1149**

SHEET NO. S49 OF 50 SHEETS

F.A.I. RTE.	SECTION	COUNTY	TOTAL SHEETS	SHEET NO.
94	1920-B	COOK	137	108
CONTRACT NO. 60J15				

ILLINOIS FED. AID PROJECT