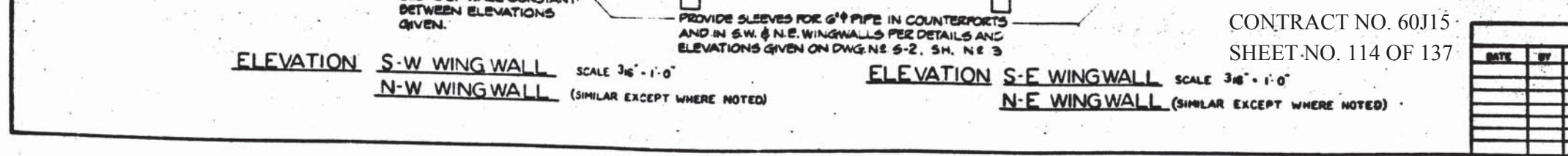
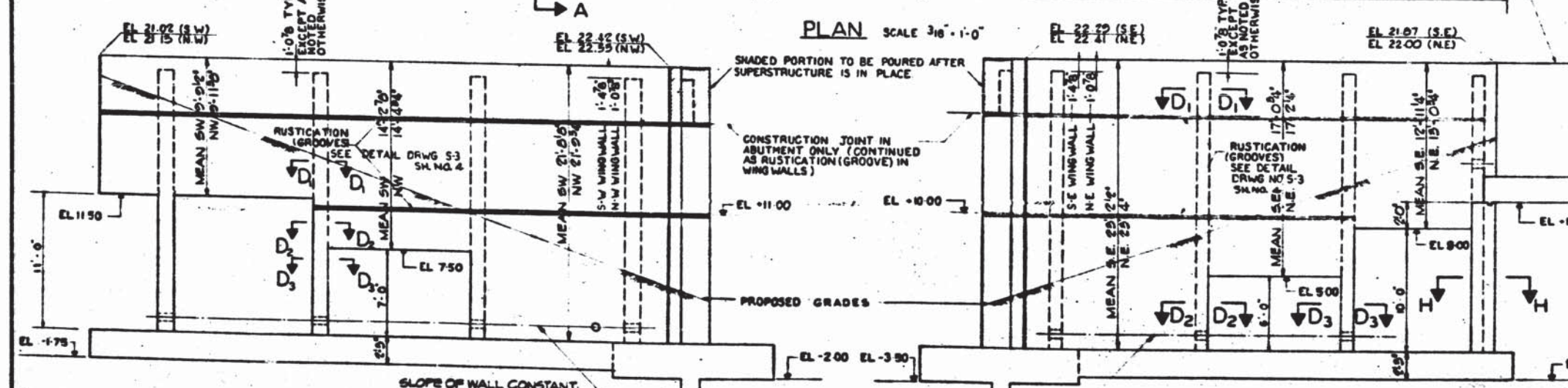
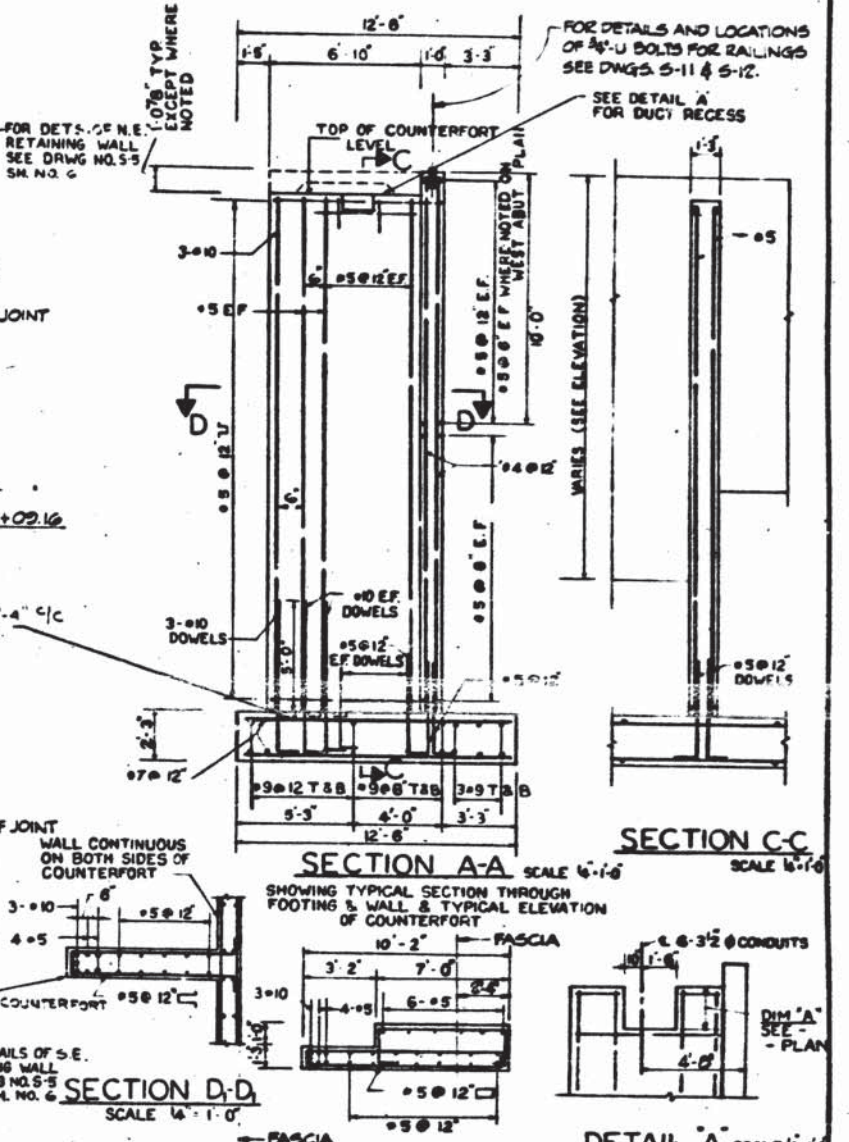


**FOR INFORMATION ONLY**



**NOTES -**  
 FOR DRAINAGE DETAILS & PIPE SLEEVES SEE DWG. 5-2, SH. 3  
 FOR RAILING DETAILS SEE DWGS. 5-11 & 5-12, SH. 12 & 13.  
 FOR ELECTRICAL DETAILS SEE SHEET NO. 47 & 48

**DEPARTMENT OF HIGHWAYS**  
**COOK COUNTY, ILLINOIS**

**WINGWALLS**  
**63RD STREET GRADE SEPARATION**  
**OVER**  
**SOUTH ROUTE EXPRESSWAY**

COMPUTED: H. M. K. PROJECT: 811-94-3(55)5R  
 DRAWN: R. M. S. SCALE: AS SHOWN  
 CHECKED: E. M. C. APPROVED: [Signature]

DATE	BY	DESCRIPTION

F.A.I. COUNTY Highway Sheet No. Total Sheets Drawing No.  
 94 066-1920-CF 5 48 S-4

BE LEUW, CATHY & COMPANY  
 CONSULTING ENGINEERS

CONTRACT NO. 60J15  
 SHEET NO. 114 OF 137