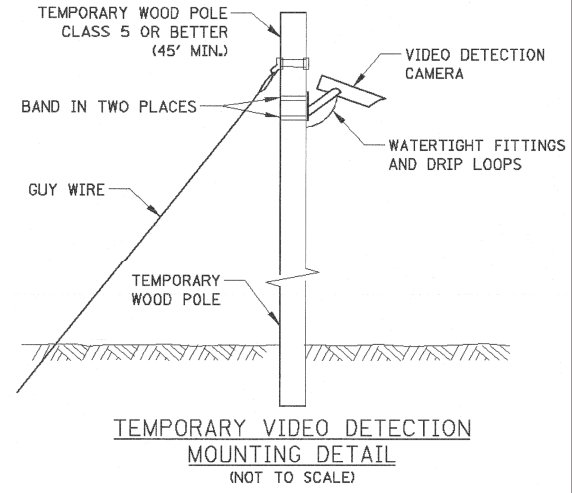
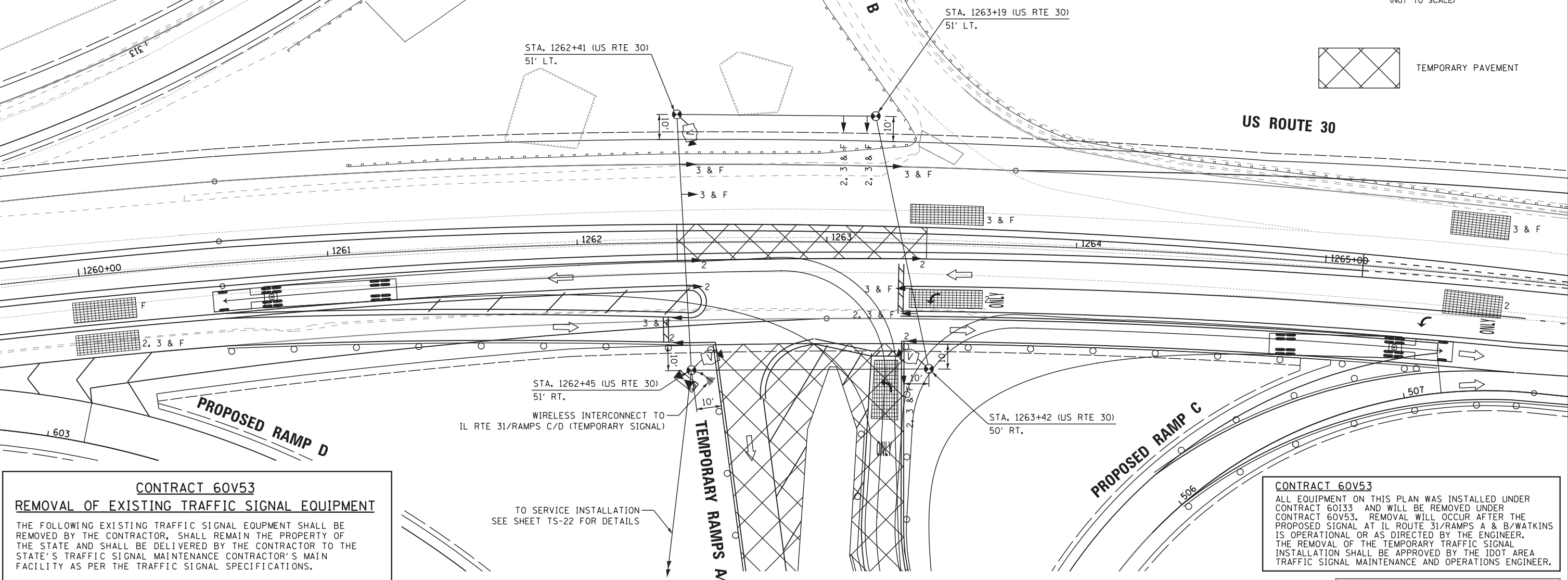


- NOTES:
- MOT SHOWN IS FOR STAGE 2. SEE MOT PLANS FOR STAGE 3 LANE CONFIGURATION.
  - NUMBER/LETTER IN FRONT OF SIGNAL HEAD INDICATES MOT STAGE. THE LETTER F INDICATES THE FINAL POSITION AT THE END OF THE CONTRACT.
  - TEMPORARY RAMPS A/B SHALL REMAIN IN USE DURING MOT STAGES 2 AND 3, AND AT THE COMPLETION OF CONTRACT 60133.
  - HEAD & DETECTION ZONE PLACEMENT SHALL REMAIN IN STAGE 3 POSITION AT THE COMPLETION OF CONTRACT 60133.

ALL TEMPORARY SIGNAL EQUIPMENT INSTALLED AT THIS INTERSECTION SHALL BE NEW AND SHALL BECOME THE PROPERTY OF THE STATE OF ILLINOIS UPON COMPLETION OF THIS CONTRACT AND ACCEPTANCE OF THE INSTALLATION BY THE STATE.



**CONTRACT 60V53**  
**REMOVAL OF EXISTING TRAFFIC SIGNAL EQUIPMENT**

THE FOLLOWING EXISTING TRAFFIC SIGNAL EQUIPMENT SHALL BE REMOVED BY THE CONTRACTOR, SHALL REMAIN THE PROPERTY OF THE STATE AND SHALL BE DELIVERED BY THE CONTRACTOR TO THE STATE'S TRAFFIC SIGNAL MAINTENANCE CONTRACTOR'S MAIN FACILITY AS PER THE TRAFFIC SIGNAL SPECIFICATIONS.

1	EACH	VIDEO DETECTION CAMERA SYSTEM COMPLETE
1	EACH	CONTROLLER AND CABINET COMPLETE
1	EACH	UPS CABINET COMPLETE

THE FOLLOWING ITEMS SHALL BE REMOVED BY THE CONTRACTOR AND SHALL BE DISPOSED OF BY THEM OUTSIDE THE RIGHT-OF-WAY AT THEIR EXPENSE. THE SALVAGE VALUE OF THE REMOVED EQUIPMENT SHALL BE REFLECTED IN THE CONTRACT BID PRICE.

7	EACH	SIGNAL HEAD, 1 - FACE, 3 - SECTION
2	EACH	SIGNAL HEAD, 1 - FACE, 5 - SECTION
5	EACH	WOOD POLE
1	EACH	SERVICE INSTALLATION

**CONTRACT 60V53**

ALL EQUIPMENT ON THIS PLAN WAS INSTALLED UNDER CONTRACT 60133 AND WILL BE REMOVED UNDER CONTRACT 60V53. REMOVAL WILL OCCUR AFTER THE PROPOSED SIGNAL AT IL ROUTE 31/RAMPS A & B/WATKINS IS OPERATIONAL OR AS DIRECTED BY THE ENGINEER. THE REMOVAL OF THE TEMPORARY TRAFFIC SIGNAL INSTALLATION SHALL BE APPROVED BY THE IDOT AREA TRAFFIC SIGNAL MAINTENANCE AND OPERATIONS ENGINEER.

THE TEMPORARY TRAFFIC SIGNAL CONTROL EQUIPMENT FOR THIS PROJECT SHALL BE "ECONOLITE" TO MATCH THE EXISTING ADJACENT SYSTEM

SEE SHEET TS-21 FOR TEMPORARY TRAFFIC SIGNAL NOTES.

THE CONTRACTOR SHALL INSTALL A WOOD SUPPORT PLATFORM AS SHOWN ON THE DISTRICT 1 SIGNAL DETAIL SHEETS FOR BOTH THE CONTROLLER CABINET AND UPS.

**RESTORATION OF WORK AREA.** RESTORATION OF THE TRAFFIC SIGNAL WORK AREA SHALL BE INCLUDED IN THE RELATED PAY ITEM SUCH AS FOUNDATION, CONDUIT, HANDHOLE, TRENCH AND BACKFILL, ETC., AND NO EXTRA COMPENSATION SHALL BE ALLOWED. ALL ROADWAY SURFACES SUCH AS SHOULDERS, MEDIAN, SIDEWALKS, PAVEMENT ETC. SHALL BE REPLACED IN KIND. ALL DAMAGE TO MOWED LAWNS SHALL BE REPLACED WITH AN APPROVED SOD, AND ALL DAMAGE TO UNMOWED FIELDS SHALL BE SEEDING IN ACCORDANCE WITH STANDARD SPECIFICATIONS 252 AND 250 RESPECTIVELY.

FILE NAME =	USER NAME = *USER*	DESIGNED -	KMM	REVISED -	
K:\Projects\090064\Design\Sheet Files\154RWaus30temp2.dgn		DRAWN -	LV	REVISED -	
	PLOT SCALE = *SCALE*	CHECKED -	JDH	REVISED -	
	PLOT DATE = 1/3/2013	DATE -		REVISED -	

**STATE OF ILLINOIS**  
**DEPARTMENT OF TRANSPORTATION**

**TEMPORARY TRAFFIC SIGNAL INSTALLATION**  
**MAINTENANCE OF TRAFFIC STAGES 2, 3 & FINAL**  
**U.S. ROUTE 30 AT ILL. RTE. 31 EB & WB RAMPS (RAMPS A, B, C & D)**  
 SCALE: 1"=20' SHEET NO. 1 OF 1 SHEETS STA. TO STA.

F.A. RTE.	SECTION	COUNTY	TOTAL SHEETS	SHEET NO.
349	(10 & 11 VB) R-3		92	64
* KANE AND KENDALL		CONTRACT NO. 60V53		
ILLINOIS FED. AID PROJECT				

TS-16