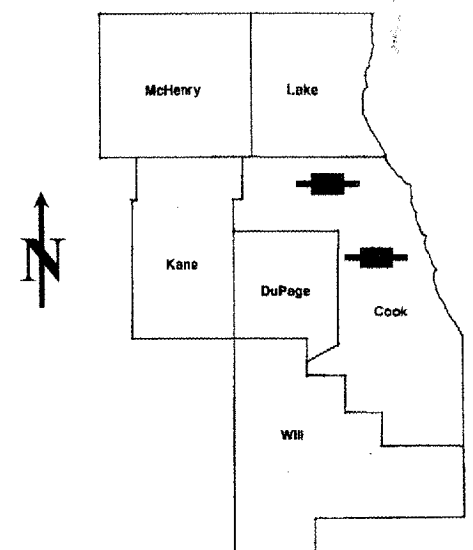


ROUTE	SECTION	COUNTY	TOTAL SHEETS	SHEET NUMBER
FAI 290 & FAP 339	2007-006I	COOK	23	1

CONTRACT NO. 60C37

D-91-206-07



LOCATION OF IMPROVEMENT INDICATED THUS:

**STATE OF ILLINOIS
DEPARTMENT OF TRANSPORTATION
DIVISION OF HIGHWAYS
DISTRICT ONE
PROPOSED HIGHWAY PLANS**

LOC 1) FAI 290: I-290 (EISENHOWER EXPWY)
AT US 12/20/45 (MANNHEIM RD.)
LOC 2) FAP 339: IL 62 (ALGONQUIN RD.)
AT IL 59 (NEW SUTTON RD.)
SECTION: 2007-006I
EROSION CONTROL

COOK COUNTY
C-91-206-07

FOR INDEX OF SHEETS SEE SHEET 2

**IMPROVEMENTS ARE LOCATED IN
THE VILLAGES OF HILLSIDE AND
BARRINGTON HILLS**

TRAFFIC DATA

LOC 1

I-290
SPEED LIMIT = 55 MPH
2007 ADT = 204,200
US 12/20/45 (MANNHEIM RD.)
SPEED LIMIT = 35 MPH
2007 ADT = 42800

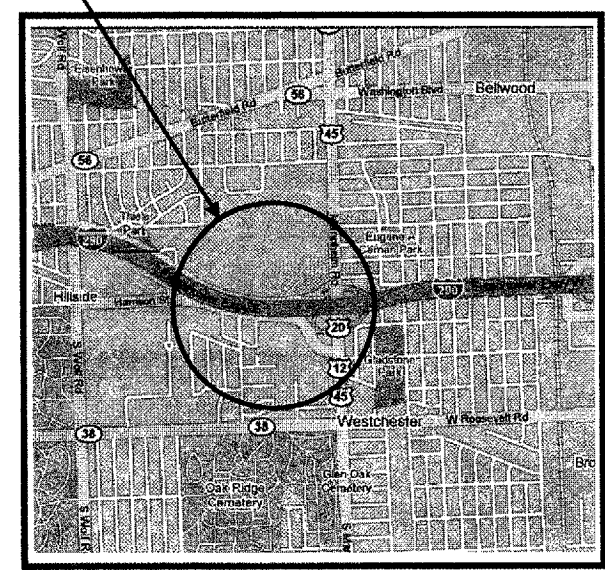
LOC 2

IL 62
SPEED LIMIT = 45 MPH
2007 ADT = 33,300
IL 59
SPEED LIMIT = 45 MPH
2007 ADT = 20,400

LOCATION 1
IMPROVEMENT

R 12 E

T39N

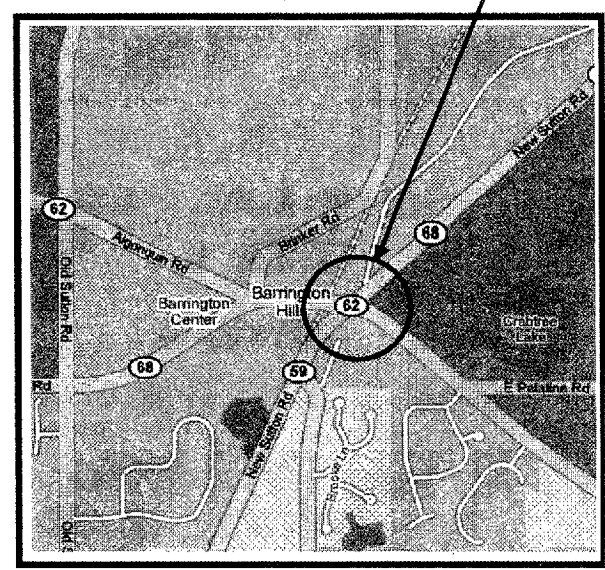


PROVISO TOWNSHIP

LOCATION 2
IMPROVEMENT

R 9 E

T42N



BARRINGTON TOWNSHIP

**STATE OF ILLINOIS
DEPARTMENT OF TRANSPORTATION
DIVISION OF HIGHWAYS**

SUBMITTED: May 29 2007
Diane O'Keefe
DEPUTY DIRECTOR OF HIGHWAYS, REGION ENGINEER

June 29, 2007
Eric E. Harn
Interim ENGINEER OF DESIGN AND ENVIRONMENT

June 29 2007
Milton R. Sees, P.E.
DIRECTOR OF HIGHWAYS, CHIEF ENGINEER

**PRINTED BY THE AUTHORITY
OF THE STATE OF ILLINOIS**

J.U.L.I.E.: JOINT UTILITY LOCATION
INFORMATION FOR EXCAVATION
(800)892-0123

DISTRICT ONE - DESIGN - PLAN PREPARATION ENGINEER:
KEN ENG / ROBERT BORO (847) 705-4178