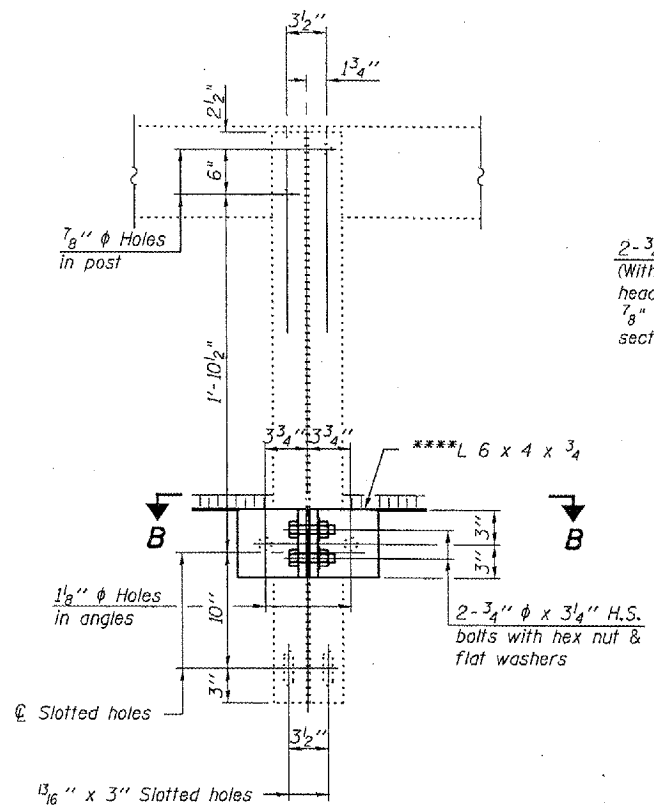


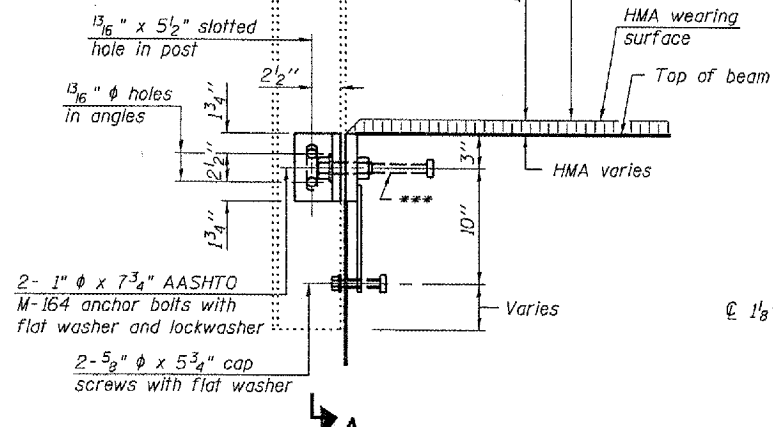
STATE OF ILLINOIS
DEPARTMENT OF TRANSPORTATION

ROUTE NO.	SECTION	COUNTY	SHEET NO.	SHEET NO.
		Hardin	11	7
Contract Number: 78011				



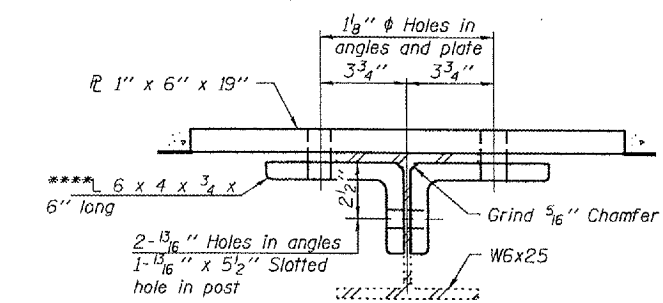
SECTION A-A

2-3/4" φ x 5" Button Head Bolts
(With slot or approved recess in head) with locknut & flat washer.
7/8" φ holes in hollow structural section.



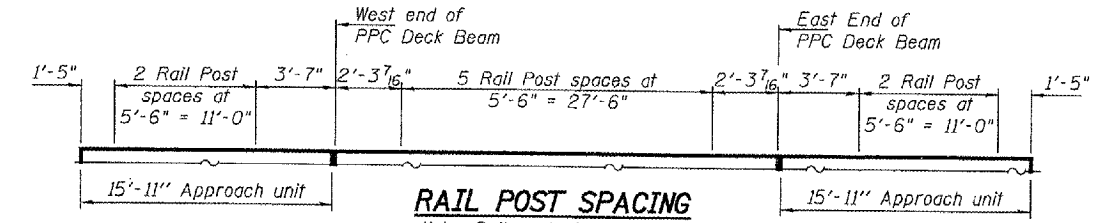
SECTION AT RAIL POST

****Cost of new angles is included with
Removing and Re-erecting Rail



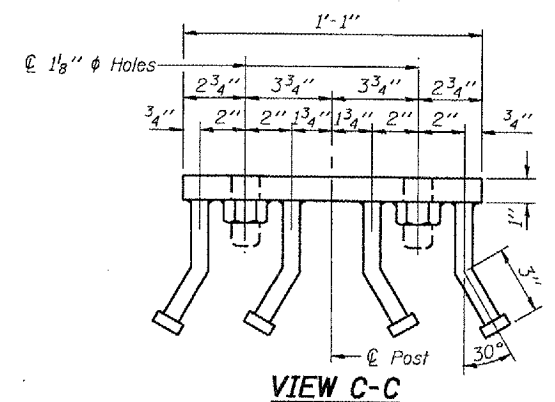
SECTION B-B

DESIGNED	A.T.H.	EXAMINED	June 15, 2007
CHECKED	V.H.V.	PASSED	<i>Ralph E. Anderson</i> ENGINEER OF BRIDGES AND STRUCTURES
DRAWN	Drew Christopher		
CHECKED	A.T.H. V.H.V.		

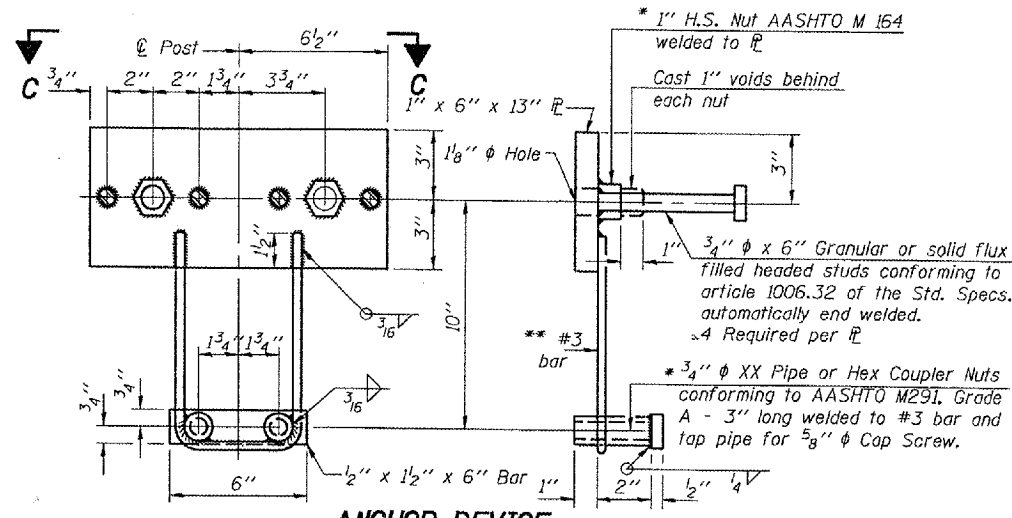


RAIL POST SPACING

Note: Rail posts in approach units to remain.



VIEW C-C



ANCHOR DEVICE

* Threaded areas shall be plugged or blocked off during casting of beam.
** Whenever the lower insert assemblies interfere with strand locations, the #3 bars shall be cut and adjusted in order to allow raising or lowering of the lower inserts. Maximum adjustment not to exceed 1/2 inch.

Notes:
All field drilled holes shall be coated with an approved zinc rich paint before erection.
All steel rail members shall be galvanized according to Article 509.05 of the Standard Specifications.
*** The studs of the anchor devices shall be placed below the top reinforcement bars and the outermost longitudinal reinforcement bar shall be placed directly above the studs of the rail post anchor device.
The cost of anchor bolts is included with the cost of deck beams.
The cost of removing, storing and re-installing existing rail posts (bridge only) and railing is included in the cost of Removing and Re-erecting Existing Railing.

BILL OF MATERIAL

Item	Unit	Quantity
Removing and Re-erecting Existing Railing	Foot	128

RAIL DETAILS
F.A. RT. 885 IL RT 34
HARDIN COUNTY
SN 035-0009