

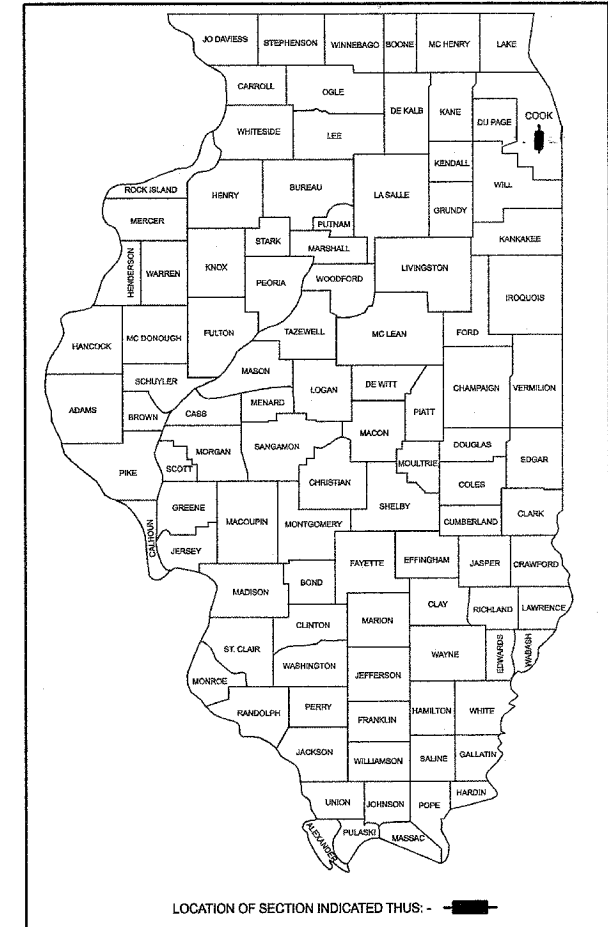
INDEX OF SHEETS

- SHEET 1 COVER SHEET
- SHEET 2 SUMMARY OF QUANTITIES & SECTIONS
- SHEET 3 GENERAL NOTES AND EAST SIDEWALK PLAN - STATION 1+15 TO 4+30
- SHEET 4 EAST SIDEWALK PLAN - STATION 4+30 TO 13+65
- SHEET 5 WEST SIDEWALK PLAN - STATION 46+05 TO 51+72
- SHEET 6 CONSTRUCTION DETAILS
- SHEET 7 CONSTRUCTION DETAILS

LEGEND	
EXISTING	PROPOSED
	STORM SEWER
	SANITARY SEWER
	WATER MAIN
	MANHOLE
	CATCHBASIN
	INLET
	FIRE HYDRANT
	VALVE VAULT
	LIGHT POLE
	POWER POLE
	MAIL BOX
	CURB AND GUTTER
	DEPRESSED CURB
	PRECAST BLOCK RETAINING WALL

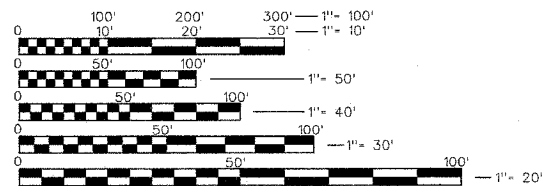
STATE OF ILLINOIS
DEPARTMENT OF TRANSPORTATION
PLANS FOR
PROPOSED FEDERAL AID
SIDEWALK IMPROVEMENT
WAGNER ROAD (WEST LAKE AVENUE TO WINNETKA ROAD)
SECTION: 07-00165-00-SW
VILLAGE OF GLENVIEW
PROJECT NUMBER CMM-8003 (818)
PROJECT
COOK COUNTY
C-91-286-07

SECTION	COUNTY	TOTAL SHEETS	SHEET NO.
1 2 3	07-00165-00-SW	COOK	7 1
PROJECT NUMBER		CMM-8003 (818)	
CONTRACT NUMBER		83922	

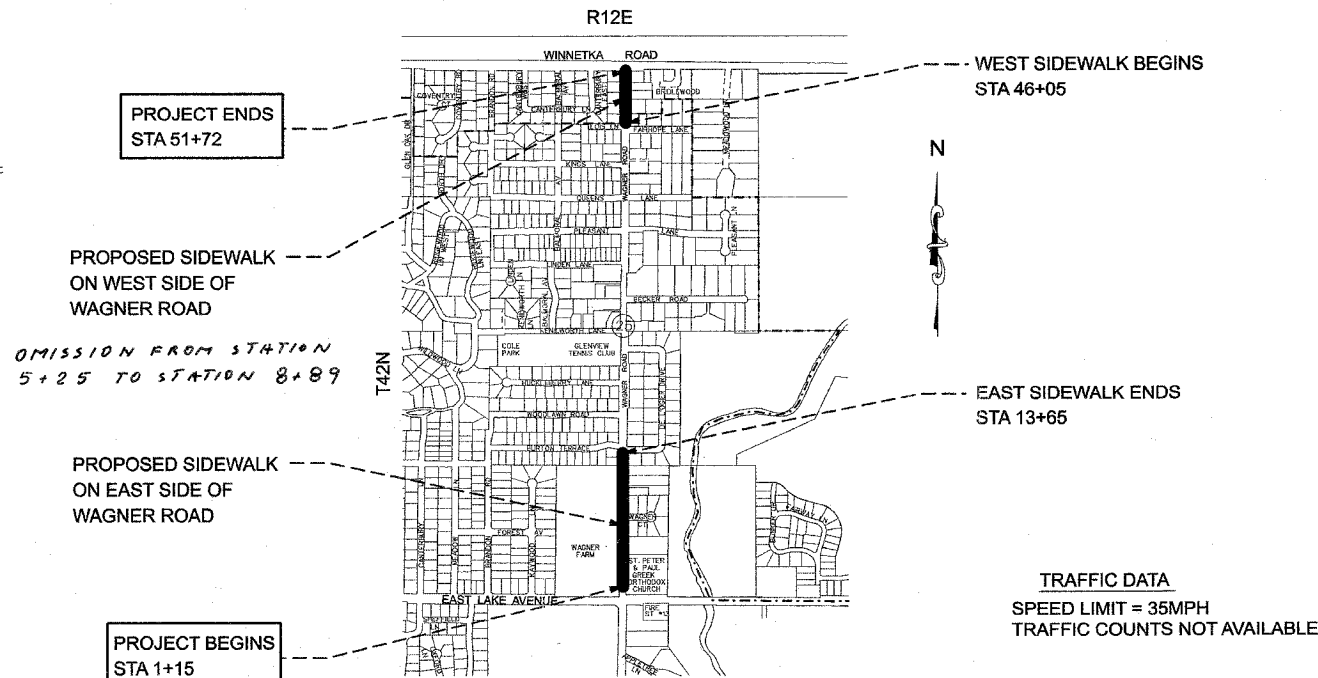


ILLINOIS DEPARTMENT OF TRANSPORTATION STANDARD DRAWINGS

- 000001-04 STANDARD SYMBOLS, ABBREVIATIONS AND PATTERNS
- 424001-04 STANDARD RAMPS FOR SIDEWALKS
- 701006-02 OFF-RD OPERATIONS, 2L, 2W, 15' TO 24" FROM PAVEMENT EDGE
- 701011-01 OFF-RD MOVING OPERATIONS, 2L, 2W, DAY ONLY
- 701301-02 LANE CLOSURE, 2L, 2W, SHORT TIME OPERATIONS
- 701311-02 LANE CLOSURE 2L, 2W MOVING OPERATIONS-DAY ONLY
- 701501-03 URBAN LANE CLOSURE, 2L, 2W, UNDIVIDED
- 702001-06 TRAFFIC CONTROL DEVICES



FULL SIZE PLANS HAVE BEEN PREPARED USING STANDARD ENGINEERING SCALES. REDUCED SIZES PLANS WILL NOT CONFORM TO STANDARD SCALES. IN MAKING MEASUREMENTS ON REDUCED PLANS THE ABOVE SCALES MAY BE USED.



TRAFFIC DATA
 SPEED LIMIT = 35MPH
 TRAFFIC COUNTS NOT AVAILABLE

NORTHFIELD TOWNSHIP

LOCATION MAP

GROSS LENGTH OF PROJECT = 5,200LF
 NET LENGTH OF PROJECT = 1,402LF

FEDERAL AID DESIGN ENGINEER
 JESSICA FELICIANO / (847) 705-4487

PLANS PREPARED BY GLENVIEW
 CAPITAL PROJECTS DEPARTMENT

CONTRACT NO.: 83922



STATE OF ILLINOIS DEPARTMENT OF TRANSPORTATION	
Approved	<u>5.25</u> , 2007 <i>Kerry D. Cummings</i> Village of Glenview
Passed	<u>MAY 31</u> , 2007 <i>CHRISTOPHER WALT</i> District #1 Engineer of Local Roads & Streets
Releasing for Bid Based on Limited Review	<u>June 1, 2007</u> <i>Diane O'Keefe</i> Deputy Director of Highways, Region #1 Engineer

PRINTED BY AUTHORITY OF THE
 STATE OF ILLINOIS