

VILLAGE OF GLENVIEW'S

GENERAL NOTES TO THE CONTRACTOR

- The Village Engineer shall be notified 72 hours prior to the start of any construction.
- The contractor shall be responsible for notifying all utility companies for locations of their facilities 48 hours in advance before beginning construction.
- Locations of the existing and proposed utilities shown on drawings are approximate and shall be determined by the Engineer and the Contractor in the field.
- All saw cutting shall be considered incidental to the contract.
- The Contractor shall notify residents in writing, 48 hours prior to the start of any construction which will affect access to their driveways.
- Buffalo boxes in sidewalks and driveways shall be adjusted as needed when work is done. The cost of adjusting the buffalo boxes is incidental to the contract.
- The Village of Glenview will provide water, at no cost to the contractor, from designated hydrants as approved by the Water Department Superintendent. The contractor shall obtain a permit and maintain a record of quantity of water used.
- The Contractor shall carefully protect and be responsible for all trees and shrubs in the work zone. No trees or shrubs shall be trimmed or removed unless directed by the Village.
- All storm sewers within the Wagner Road R.O.W. shall be backfilled with fine aggregate material (FA-6). The cost of FA-6 trench backfill is incidental to the contract.
- The removal and disposal of unsuitable material in accordance with section 202 of the Standard Specifications for Road and Bridge Construction, latest edition, shall include the removal of the pavement; driveway, aprons, curb and gutter, topsoil and earth excavation and all other materials not specifically mentioned in the Summary of Quantities for removal to meet the proposed pavement subgrade.
- Relocate existing mail boxes per Engineers instructions.
- Provide sidewalk ramps at all street crossings as per I.D.O.T. Standard 424001 current revision number.
- The exact length and height of the proposed precast block retaining walls shall be determined by engineer.
- The connection of proposed storm sewer at the existing catch basin shall be made using machine core and provide a watertight flexible rubber connector with stainless steel bands.

SECTION	COUNTY	TOTAL SHEETS	SHEET NO.
1 2 3	07-00165-00-SW	COOK	7 3
PROJECT NUMBER		CMM-8003 (818)	
CONTRACT NUMBER		83922	

PAVEMENT LEGEND

5" PC CONCRETE SIDEWALK (6" ACROSS DRIVEWAYS)
AGGREGATE BASE COURSE, TYPE B 4"

STORM SEWER DATA

- 63 L.F., 12" R.C.P., @ 1.00%
- CONSTRUCT NEW CATCH BASIN OVER EXISTING 15" CULVERT AND PROVIDE SOLID LID
- 40 L.F., 15" R.C.P., @ 1.00%

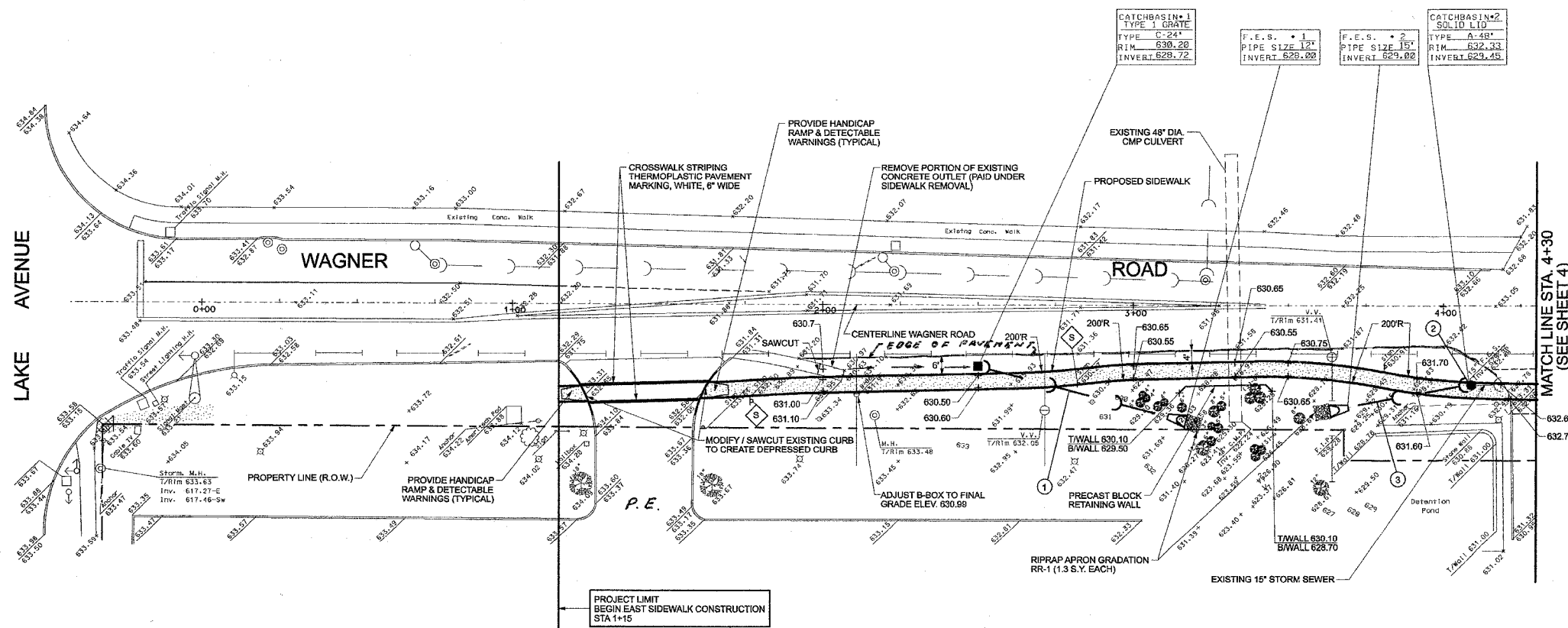
LEGEND

EXISTING SIGN TO BE RELOCATED

NOTES:

- TEMPORARY REMOVAL AND RE-INSTALLATION OF MAIL BOX PAID UNDER "RELOCATE EXISTING MAIL BOX" SPECIAL PROVISION (TYPICAL).
- PROVIDE SIDEWALK RAMP AND DETECTABLE WARNINGS MATCH EXISTING PAVEMENT (TYPICAL).
- PRECAST BLOCK RETAINING WALL LENGTH AND HEIGHT TO BE DETERMINED IN THE FIELD BY THE ENGINEER.

SCALE: 1" = 20'



NOTE: CONTRACTOR TO CHECK WITH VILLAGE ENGINEER REGARDING LANDSCAPE WALLS AROUND TREES AND PRIOR TO FILLING OVER ROOTS OF TREES, TREES MAY REQUIRE ROOT PRUNING.

WAGNER ROAD SIDEWALK IMPROVEMENTS				SHEET	
GLENVIEW, ILLINOIS				3	
GENERAL NOTES AND EAST SIDEWALK PLAN				OF 7	
STATION 1+15 TO 4+30				DATE 03-22-07	
DATE	BY	REVISION			
05-14-07	E.L.	IDOT COMMENTS			
04-02-07	E.L.	IDOT COMMENTS			