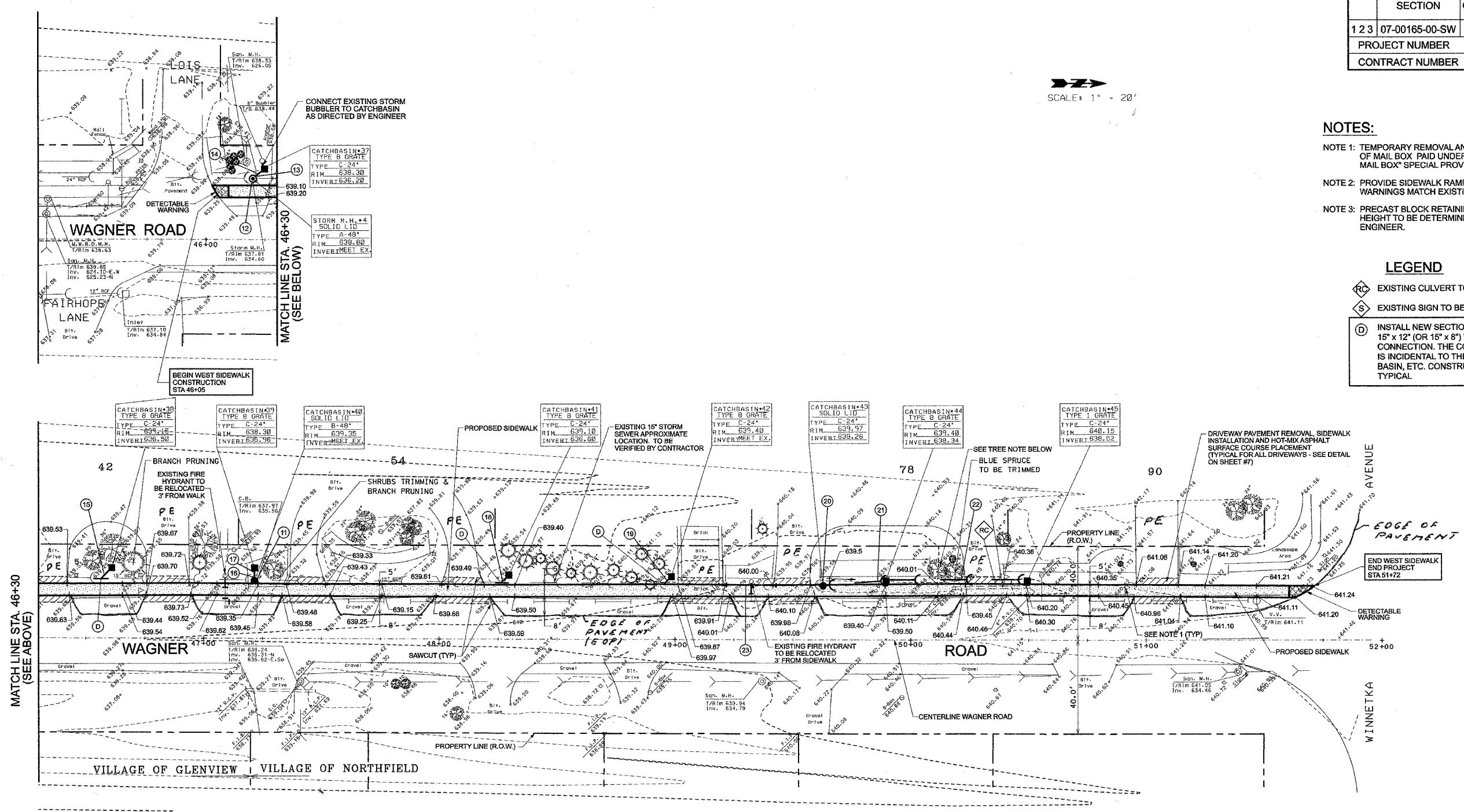


SECTION	COUNTY	TOTAL SHEETS	SHEET NO.
1 2 3	07-00165-00-SW	COOK	7
PROJECT NUMBER		CMM-8003 (818)	
CONTRACT NUMBER		83922	

SCALE: 1" = 20'

- NOTES:**
- NOTE 1: TEMPORARY REMOVAL AND RE-INSTALLATION OF MAIL BOX PAID UNDER "RELOCATE EXISTING MAIL BOX" SPECIAL PROVISION (TYPICAL).
 - NOTE 2: PROVIDE SIDEWALK RAMP AND DETECTABLE WARNINGS MATCH EXISTING PAVEMENT (TYPICAL).
 - NOTE 3: PRECAST BLOCK RETAINING WALL LENGTH AND HEIGHT TO BE DETERMINED IN THE FIELD BY THE ENGINEER.

- LEGEND**
- RC EXISTING CULVERT TO BE REMOVED
 - S EXISTING SIGN TO BE RELOCATED
 - D INSTALL NEW SECTION OF 15" PIPE AND 15" x 12" (OR 15" x 8") WYE FOR INLET CONNECTION. THE COST OF THIS WORK IS INCIDENTAL TO THE INLET, CATCH BASIN, ETC. CONSTRUCTION WORK - TYPICAL



STORM SEWER DATA

- | | |
|---|---|
| (11) REMOVE AND REPLACE EXISTING CATCH BASIN | (16) CONNECT TO REPLACED CATCH BASIN (INV = 635.90) |
| (12) REMOVE AND REPLACE EXISTING MANHOLE | (17) 6 L.F., 12" R.C.P. @ 1.00% (MIN) |
| (13) CONNECT TO REPLACED MANHOLE (INV = 636.10) | (18) 4 L.F., 8" D.I.P., @ 1.00% (MIN) |
| (14) 5 L.F., 12" R.C.P. @ 2.00% (MIN) | (19) 4 L.F., 8" D.I.P., @ 1.00% (MIN) |
| (15) 6 L.F., 12" R.C.P. @ 1.00% (MIN) | (20) CONSTRUCT NEW CATCH BASIN OVER EXISTING 12" CULVERT |
| | (21) 28 L.F., 8" D.I.P., @ 0.30% |
| | (22) 60 L.F., 8" D.I.P., @ 0.30% |
| | (23) 21 L.F., 15" R.C.P. TO BE REPLACED AT CROSSING WITH WATER MAIN (TYPICAL) |

PAVEMENT LEGEND

- 5" PC CONCRETE SIDEWALK (6" ACROSS DRIVEWAYS)
- AGGREGATE BASE COURSE, TYPE B 4"

WAGNER ROAD SIDEWALK IMPROVEMENTS				SHEET	
GLENVIEW, ILLINOIS				5	
WEST SIDEWALK PLAN				OF 7	
STATION 46+05 TO 51+72				DATE 03-22-07	
DATE	BY	REVISION			
05-14-07	E.L.	IDOT COMMENTS			
04-02-07	E.L.	IDOT COMMENTS			